

Dato :	07.01.94	Sign: bot
Sist rev:	24.9.07	Sign: tb
Doc. Nr:	K4-13E	Sign: tb
Side 1 av 8		

Production BSF



1.7 Column units, the 5 smallest types.



1.8 Complete sets of the five smallest BSF types for demonstration at factory.



2.9 Double column units welded in jig.



2.10 The jig is adjustable.



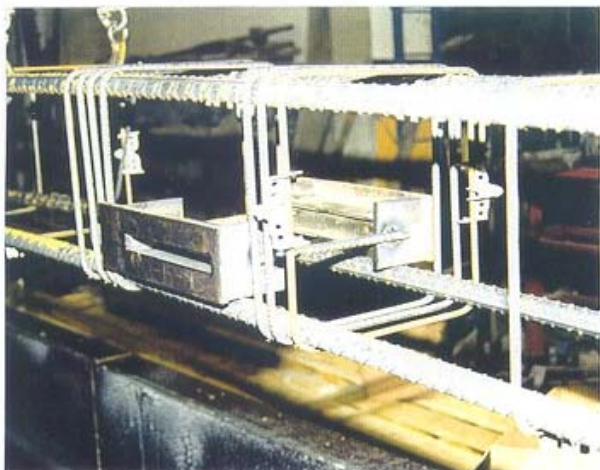
2.11 Double column units after welding.



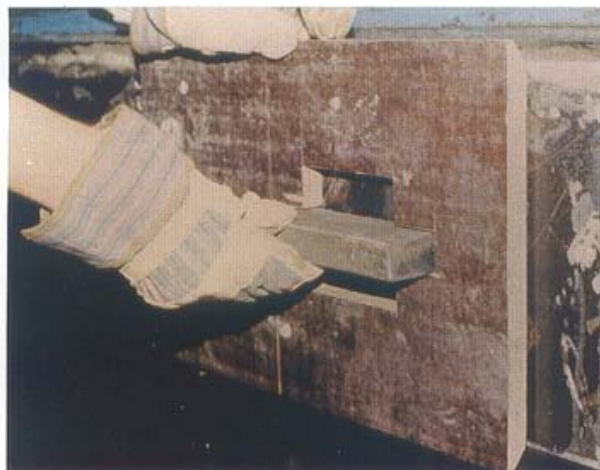
2.12 Eksample of reinforcement welded on to one-sided column units

Dato :	07.01.94	Sign: bot
Sist rev:	24.9.07	Sign: tb
Doc. Nr:	K4-13E	Sign: tb
Side 2 av 8		

Production BSF



2.13 The column unit is placed inside the reinforcement before lifting into form.



2.14 Plywood guiding plate to ensure accurate positioning of guiding knife for column unit.



2.15 Guiding knife spot welded to form.



2.16 Guiding knife in plywood form.



2.17 Magnet guiding knife.



2.18 Form ready for double-side BSF.

Dato :	07.01.94	Sign: bot
Sist rev:	24.9.07	Sign: tb
Doc. Nr:	K4-13E	Sign: tb
Side 3 av 8		

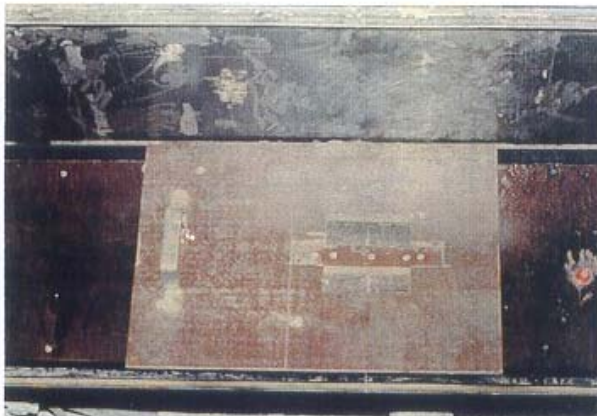
Production BSF



2.19 Guiding knife in bottom of form sealed with silicone.



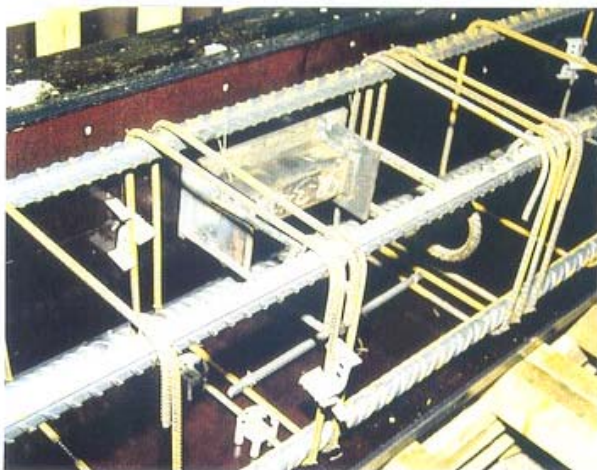
2.20 The column unit is pressed into position. Watertightness ensures underpressure.



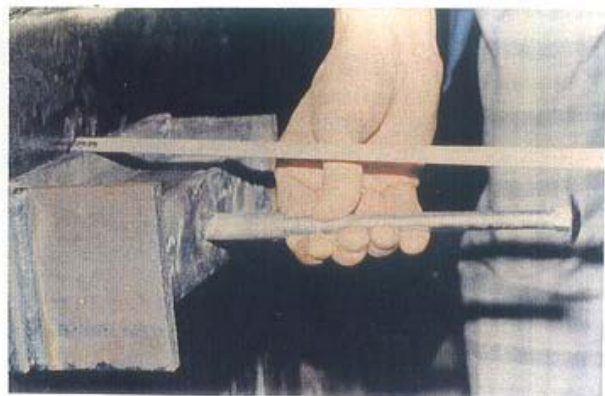
2.21 Plywood guiding plate used in bottom of form.



2.22 The guiding knives ensures accurate positioning of the BSF-units.



2.23 Single side BSF unit.



2.24 Single side BSF unit secured with galvanized adjustable bolt.

Dato :	07.01.94	Sign: bot
Sist rev:	24.9.07	Sign: tb
Doc. Nr:	K4-13E	Sign: tb
Side 4 av 8		

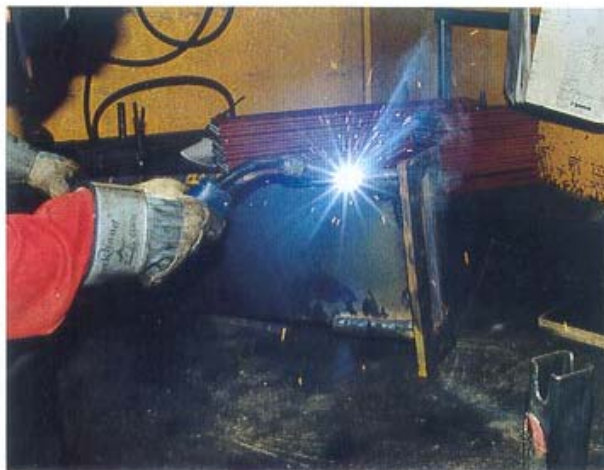
Production BSF



2.25 BSF units placed on side and in bottom.



3.26 BF 200/20 upside/down, reinf. spot welded.
Plywood plate for correct position.



3.27 Completion of welding after removal of
plywood plate.



3.28 BF 200/40 placed in reinforcement.



3.29 Endplate with guiding knife, centre-beam.



3.30 Endplate with guiding knife,
rim-beam.

Dato :	07.01.94	Sign: bot
Sist rev:	24.9.07	Sign: tb
Doc. Nr:	K4-13E	Sign: tb
Side 5 av 8		

Production BSF



3.31 BF-unit fastened through spaced holes in end plate with screws.



3.32 The complete reinforcement hoisted into final position in form.



3.33 Placing of end plates in middle of form.



3.34 Removeable polystyrene in upper face of beam



3.35 Shape of polystyrene.



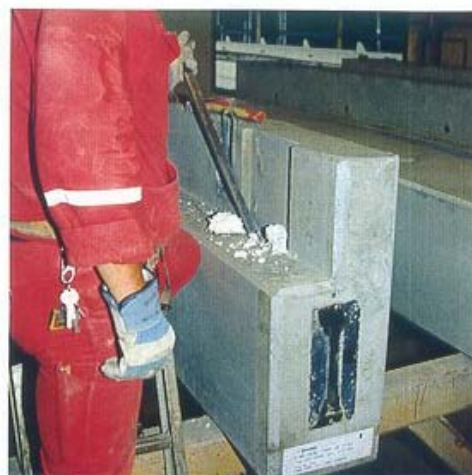
4.36 Removal of polystyrene.

Dato :	07.01.94	Sign: bot
Sist rev:	24.9.07	Sign: tb
Doc. Nr:	K4-13E	Sign: tb
Side 6 av 8		

Production BSF



4.37 Removal of polystyrene.



4.38 Removal of polystyrene.



4.39 Cleaning beam-end.



4.40 Cleaning column unit.



4.41 Entering BSF-knife.



4.42 Placing of lock-pin.

Dato :	07.01.94	Sign: bot
Sist rev:	24.9.07	Sign: tb
Doc. Nr:	K4-13E	Sign: tb
Side 7 av 8		

Production BSF



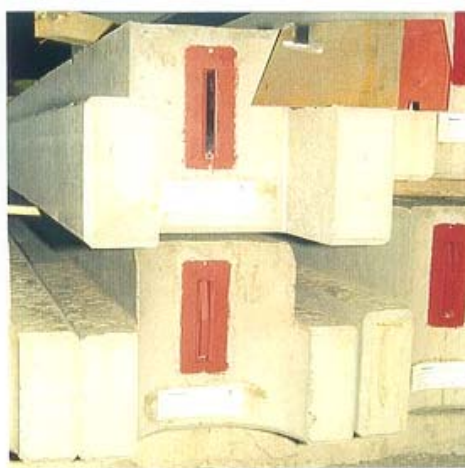
4.43 Some customers wants painting. (-beam)



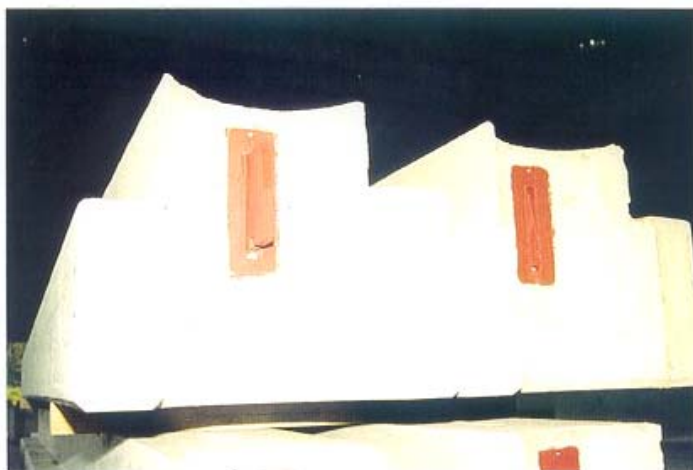
4.44 Some customers wants painting. (-column)



4.45 The BSF-knife is easy to move.



4.46 Inverted T-beam with forking.



4.47 Beam-end for round column.



4.48 Rim-beam.

Dato :	07.01.94	Sign: bot
Sist rev:	24.9.07	Sign: tb
Doc. Nr:	K4-13E	Sign: tb
Side 8 av 8		

Production BSF



4.49 Curved, high beam.



4.50 Wall element with support for beam.



4.52 Traditional corbels demands more space.



4.51 From stockyard.