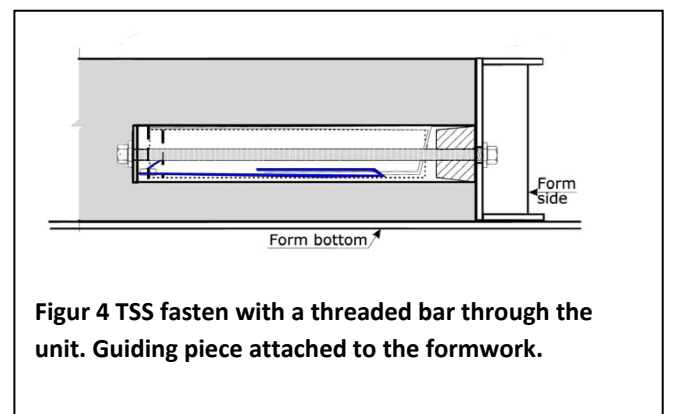
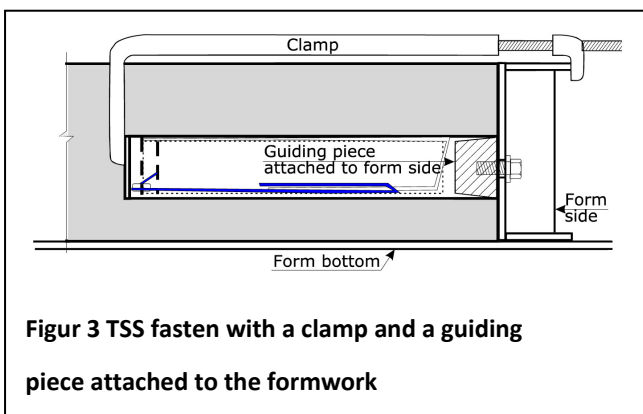
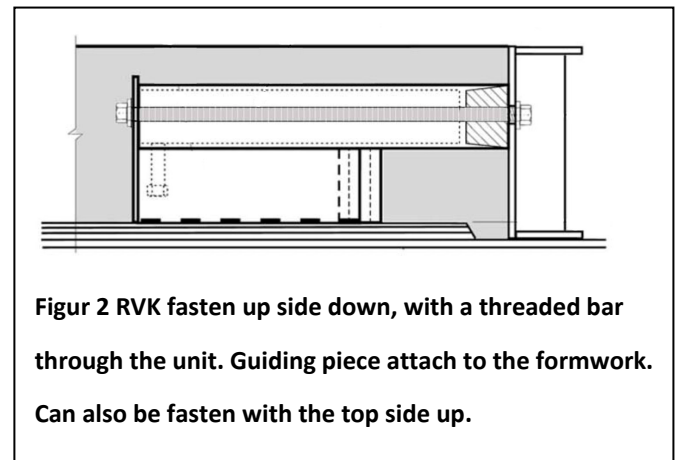
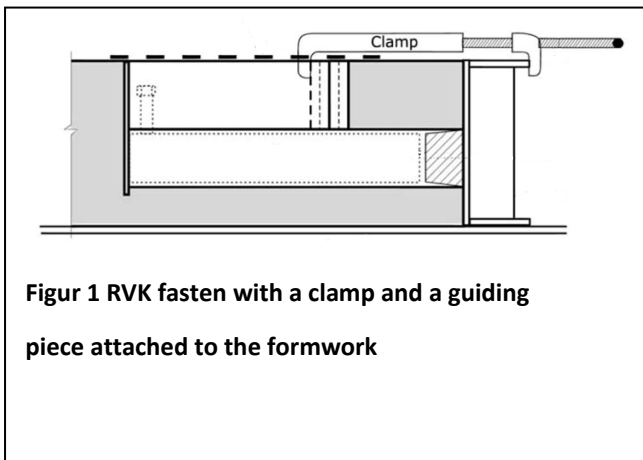


Date :	15.04.09	Sign: sa
Last rev:	14.05.09	Sign: tb
Doc. No:		Sign: tb
Page 1 of 6		

Recommended production-erecting method with use of TSS or RVK

Production:

There are several ways to fasten the TSS or RVK unit to the formwork. We are showing two variations of each type.



Date :	15.04.09	Sign: sa
Last rev:	14.05.09	Sign: tb
Doc. No:		Sign: tb
Page 2 of 6		

Recommended production-erecting method with use of TSS or RVK

Erecting:



M1: Landing with TSS and rubber box.



M2: Check the inner tube, by pulling the white and blue rope.



M3: Place the rope on the top of the landing before Lifting.



M4: Place the support for the landing, and adjust it to the right height.



M5: Landing on the way down.



M6: Landing almost in the right position.

Date :	15.04.09	Sign: sa
Last rev:	14.05.09	Sign: tb
Doc. No:		Sign: tb
Page 3 of 6		

Recommended production-erecting method with use of TSS or RVK



M7: Landing in the right position.



M8: Place a sheathing list around the unit.



M9: Use a jig to push the sheathing list to the right position.



M10: The sheathing list in the right position.



M11: Pull out the inner tube



M12: Place the safety bolt in the hole

Date :	15.04.09	Sign: sa
Last rev:	14.05.09	Sign: tb
Doc. No:		Sign: tb
Page 4 of 6		

Recommended production-erecting method with use of TSS or RVK



M13: Fill the gap with mortar



M14: The mortar are also fireproofing the unit.



M15: Filling is done.



M16: Stair ready to be erect.



M17: Stair is lifted up to the shaft



M18: Placing temporary railing to the stair.

Date :	15.04.09	Sign: sa
Last rev:	14.05.09	Sign: tb
Doc. No:		Sign: tb
Page 5 of 6		

Recommended production-erecting method with use of TSS or RVK



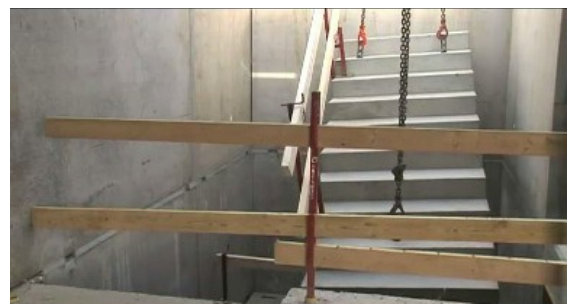
M19: Railing on the stair is finish.



M20: Measure, and shim up to the right height.



M21: The stair is lowering down to the shaft



M22: The stair is almost in the right position.



M23: Fast assembly, and in the right position.



M24: The landing and the stair are finish. Ready for the next floor.

Date :	15.04.09	Sign: sa
Last rev:	14.05.09	Sign: tb
Doc. No:		Sign: tb
Page 6 of 6		

Recommended production-erecting method with use of TSS or RVK



M25: The stair is finish.