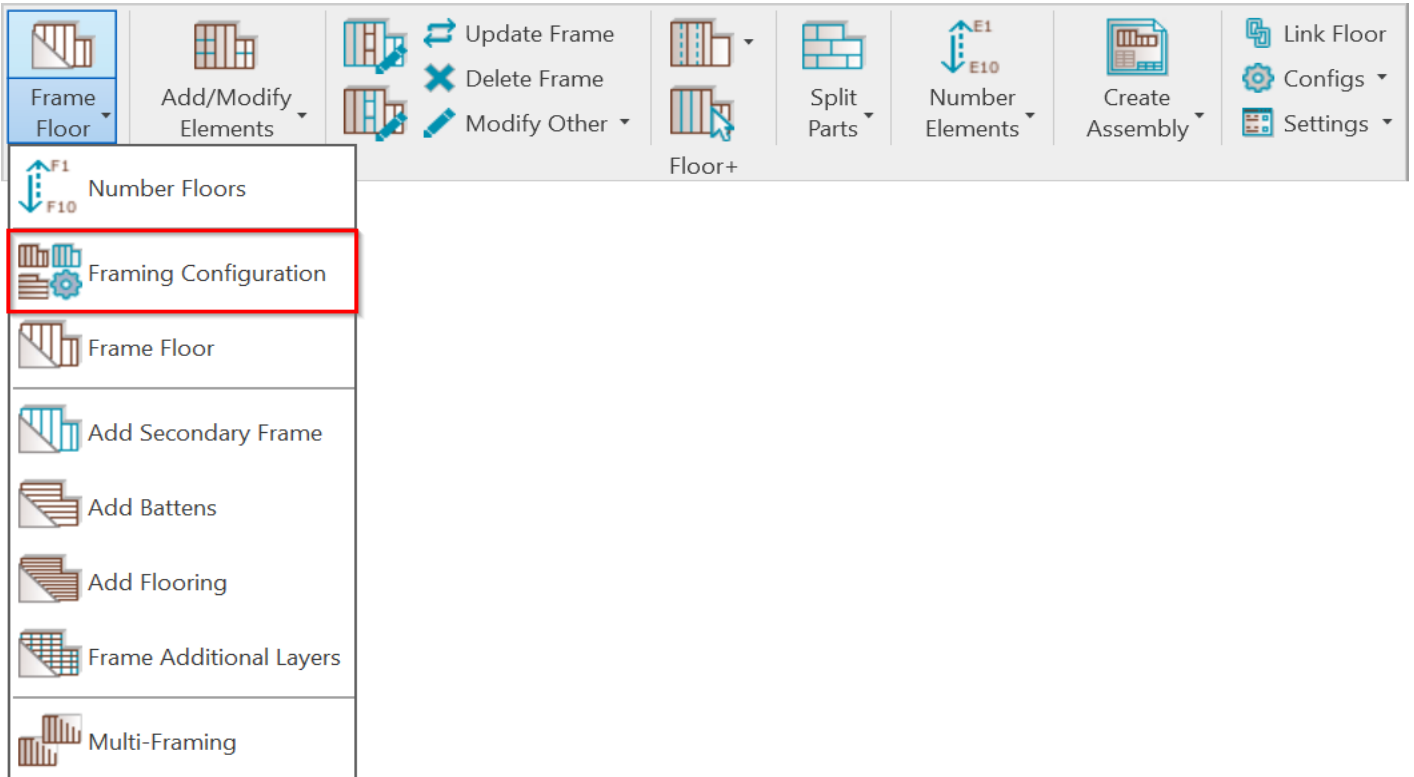


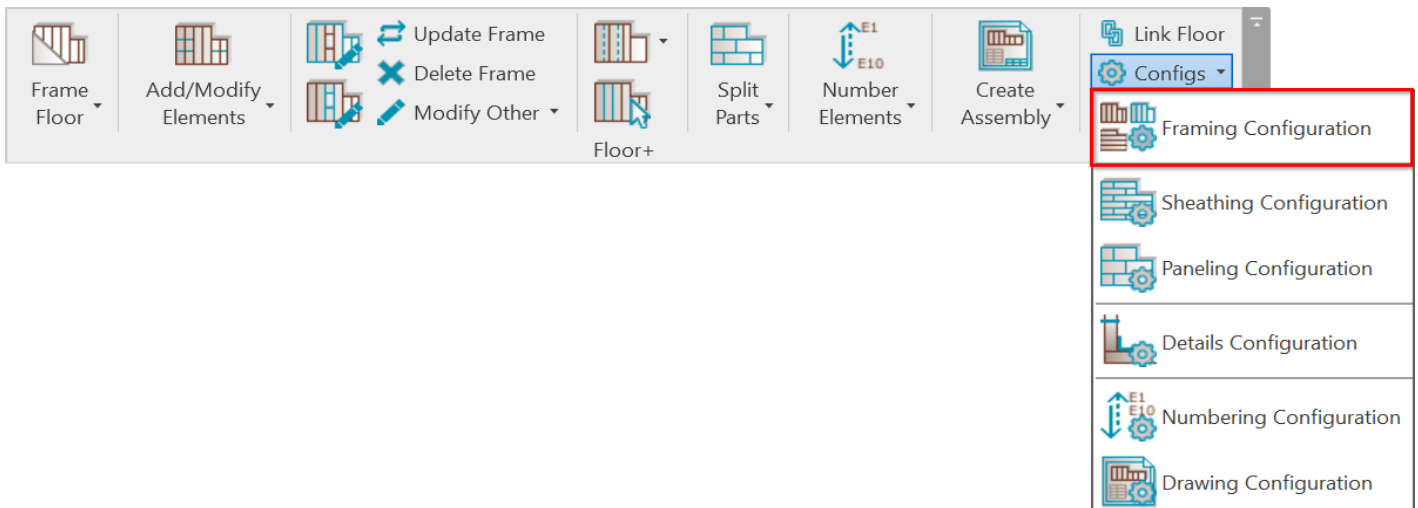
FRAMING CONFIGURATION – Floor Framing

Modified on: Sun, 22 Nov, 2020 at 8:34 PM

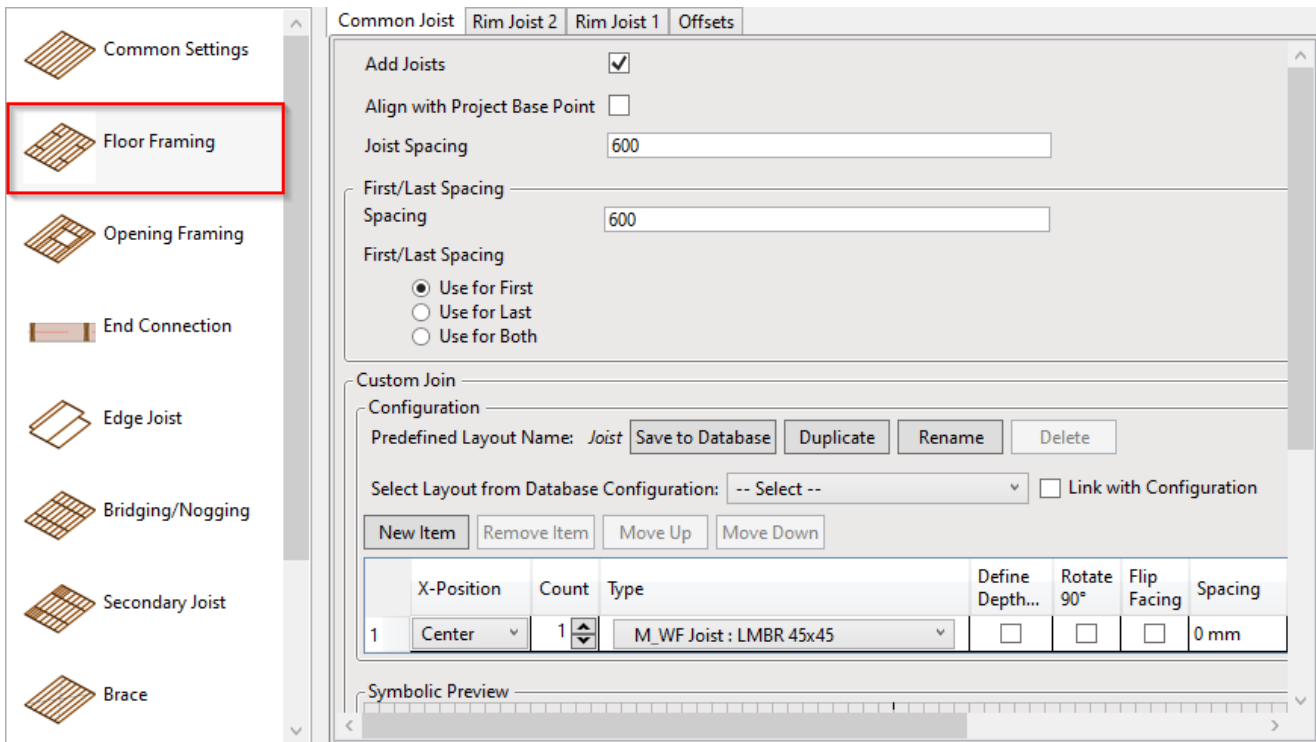
Framing Configuration may be found in two locations:



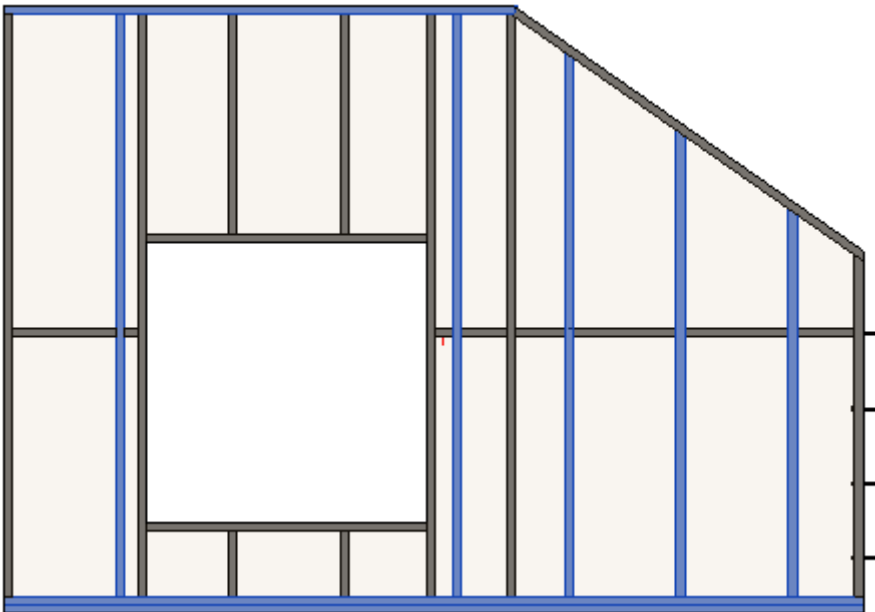
or:



Floor Framing – Common Joists



Common Joists – here you can control regular joists (**Common Joist** tab), top (**Rim Joist 2** tab) joists and bottom (**Rim Joist 1** tab) joists:



Add Joists

Common Joist Rim Joist 2 Rim Joist 1 Offsets

Add Joists

Align with Project Base Point

Joist Spacing

First/Last Spacing
Spacing

First/Last Spacing
 Use for First
 Use for Last
 Use for Both

Custom Join
 Configuration
 Predefined Layout Name: Joist

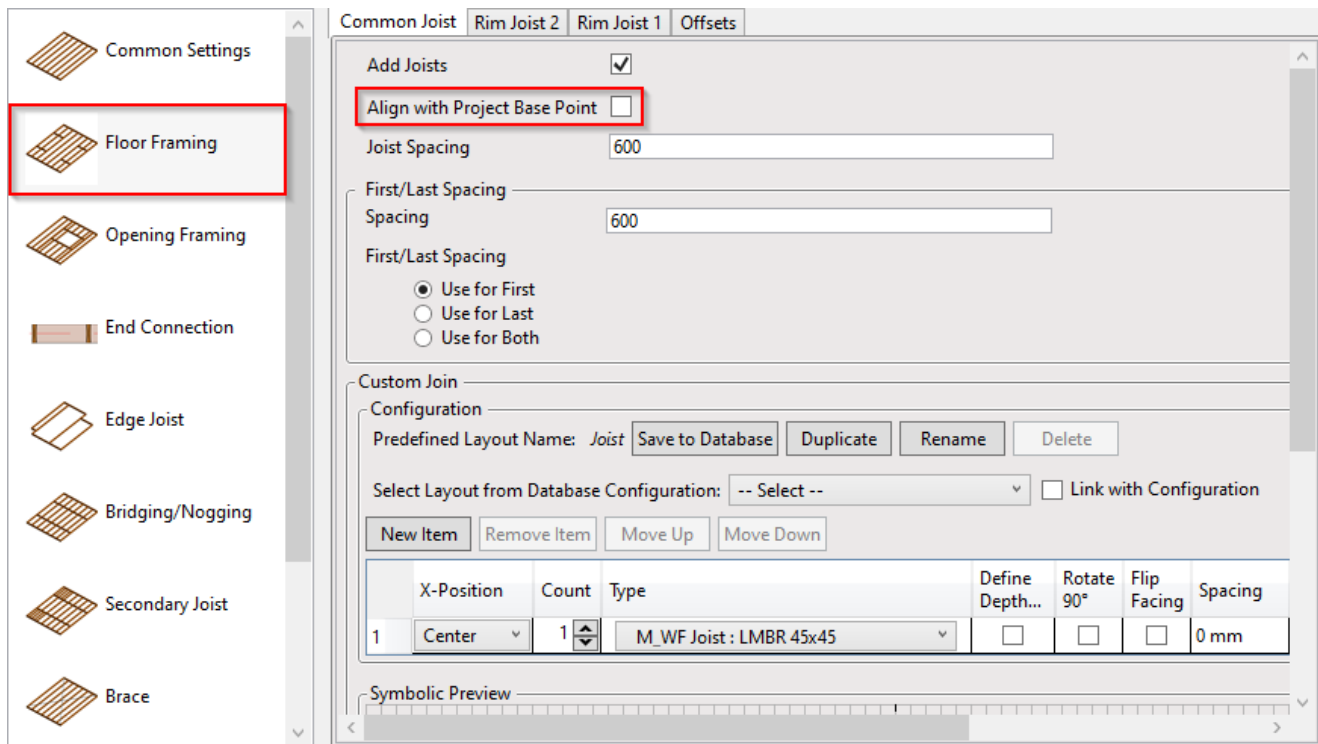
Select Layout from Database Configuration: -- Select -- Link with Configuration

	X-Position	Count	Type	Define Depth...	Rotate 90°	Flip Facing	Spacing
1	Center	1	M_WF Joist : LMBR 45x45	<input type="checkbox"/>	<input type="checkbox"/>	<input type="checkbox"/>	0 mm

Symbolic Preview

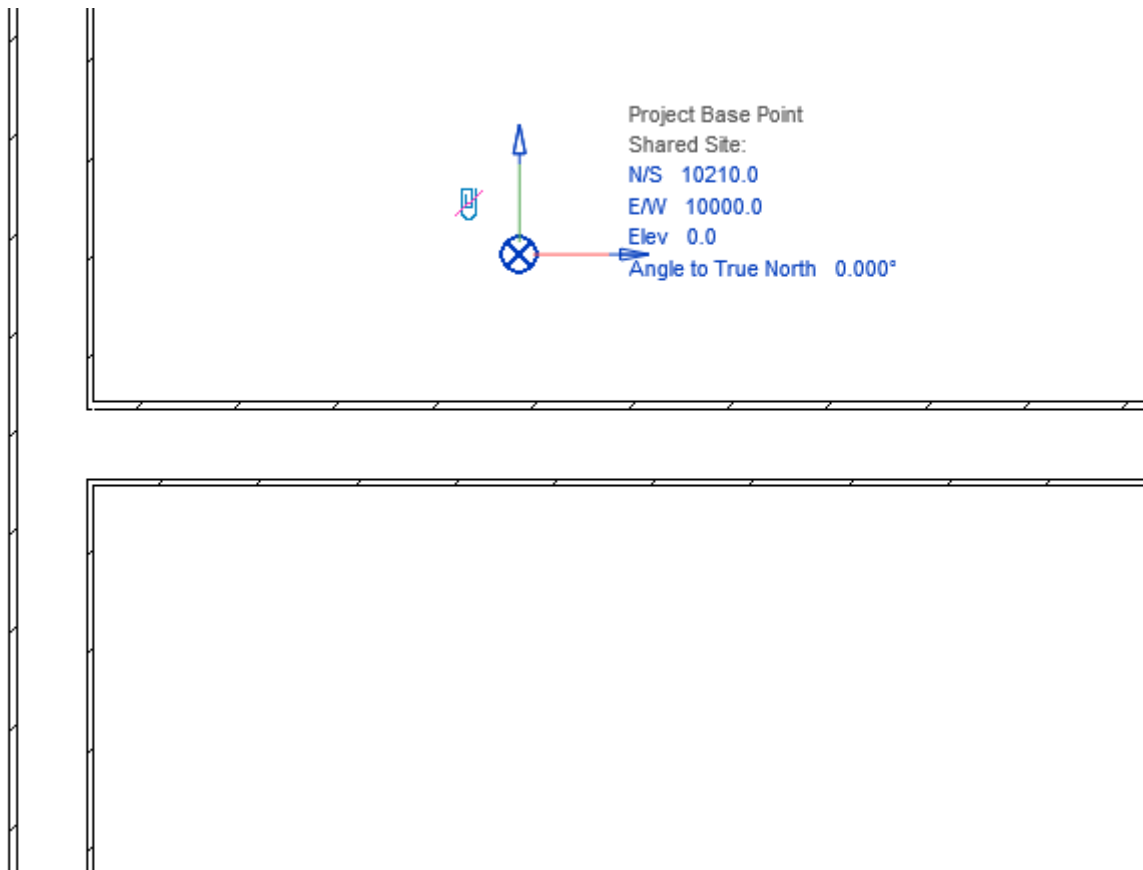
Add Joists – adds joists with rules listed below to the frame. The frame can be created without joists, just using, for example, horizontal elements.

Align with Project Base Point

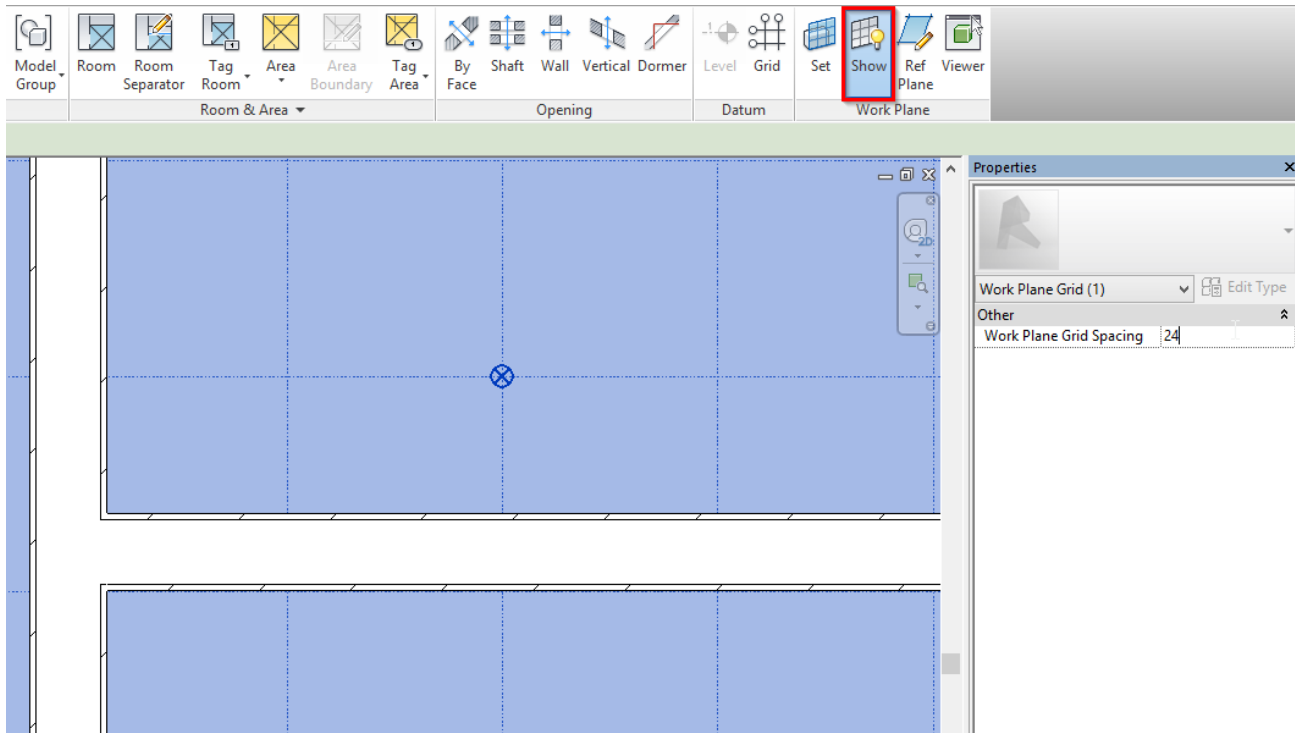


Align with Project Base Point – allows joists to be positioned not only in relation to each other but according to Revit gridlines.

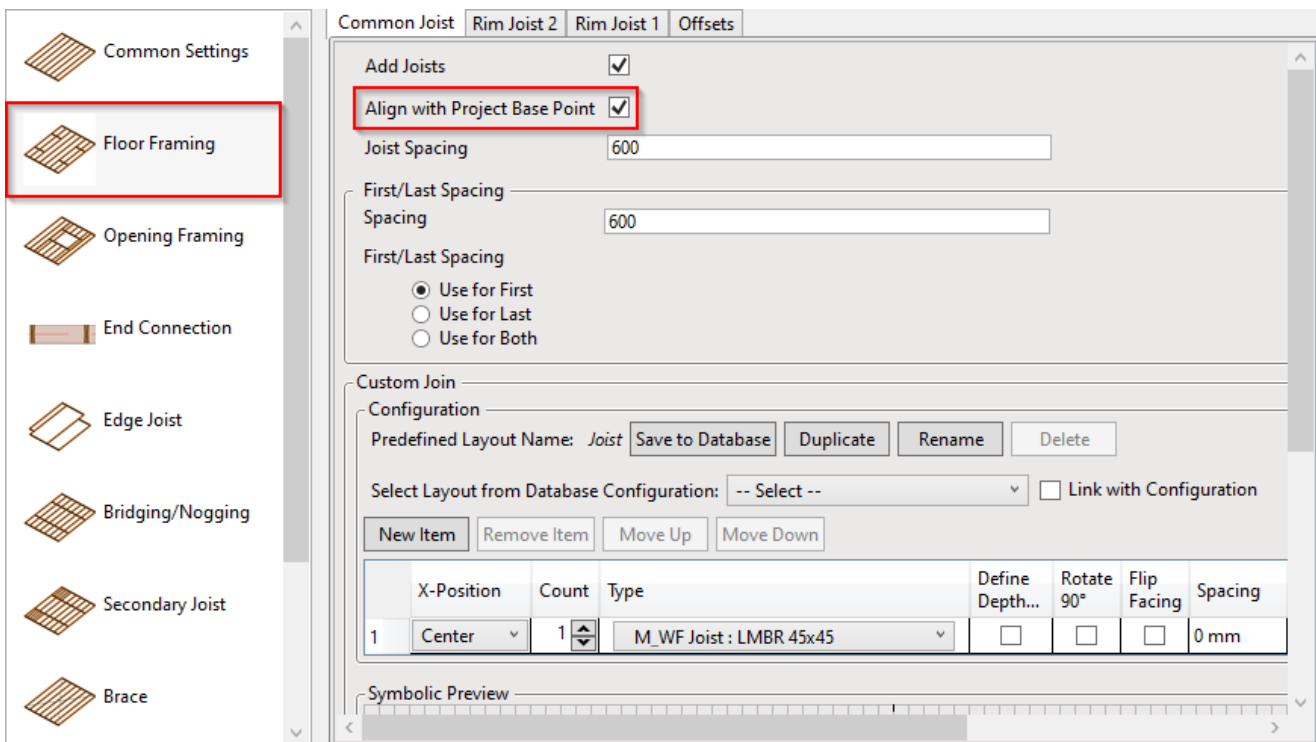
First step – unclip the state of the Revit **Project Base Point** and move it to the needed position:



For more convenience, switch on Revit **Work Plane** and move it to the **Project Base Point**. It will help you to understand if the studs or joists are created in the right position:



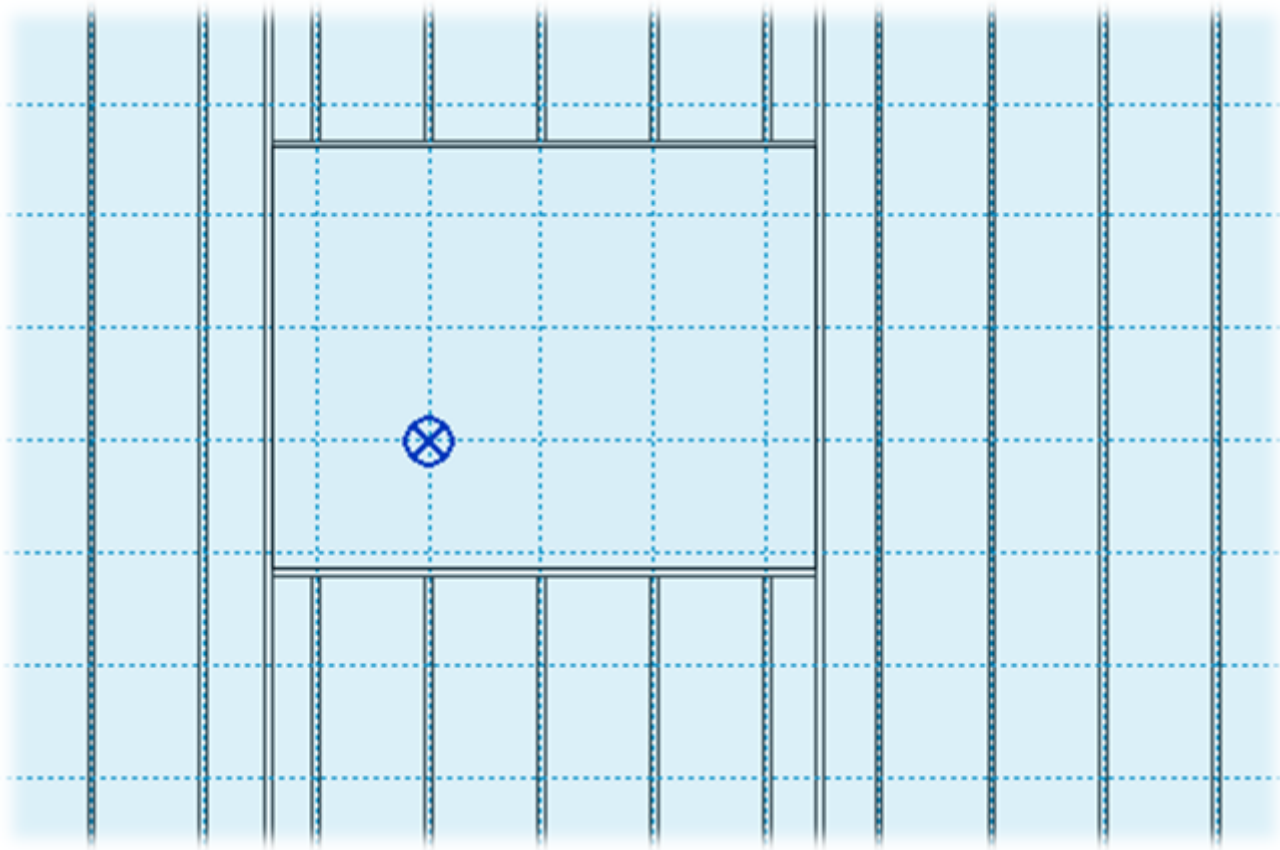
Turn on **Align with Project Base Point** in the **Framing Configuration** dialog:



Frame the walls, floors, or roof.

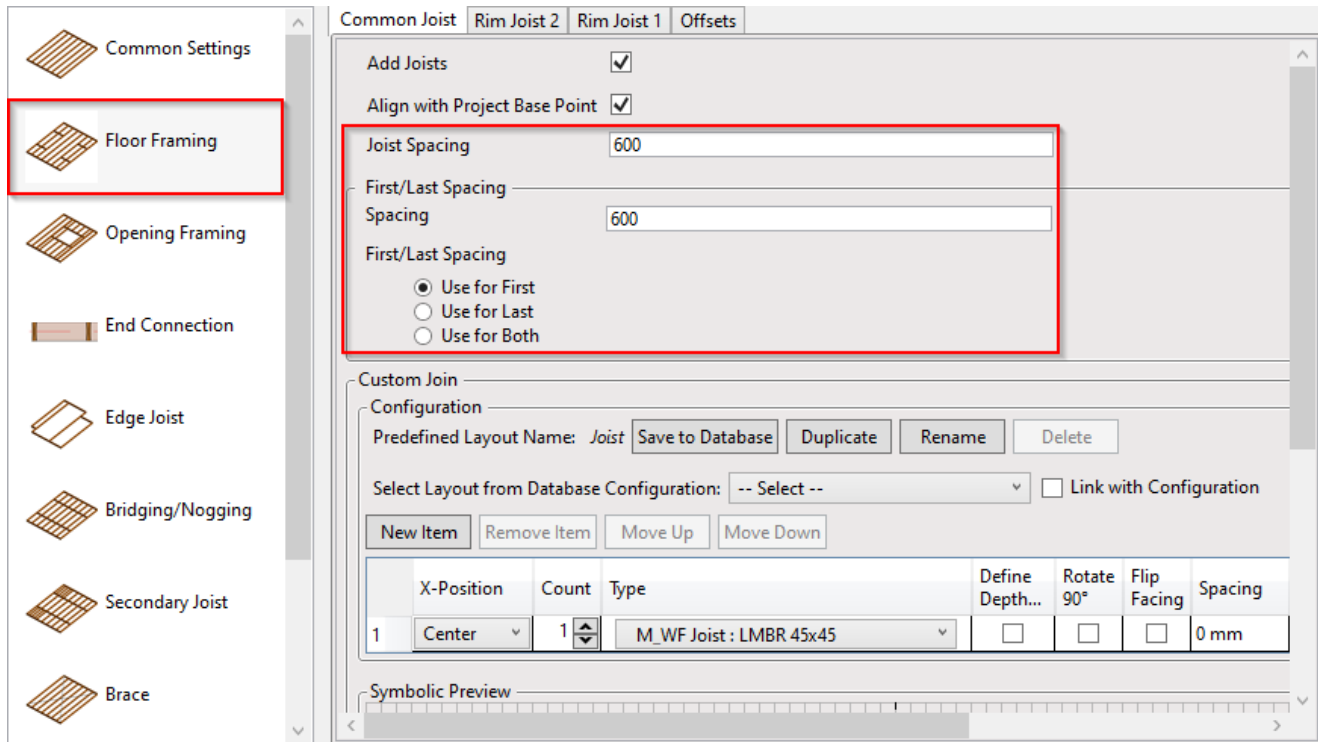
Joists are positioned on the gridlines – and where necessary to fill in gaps or form intersections – so that they always match up across a corridor or room.

Notice how the joists are spaced according to the grid.

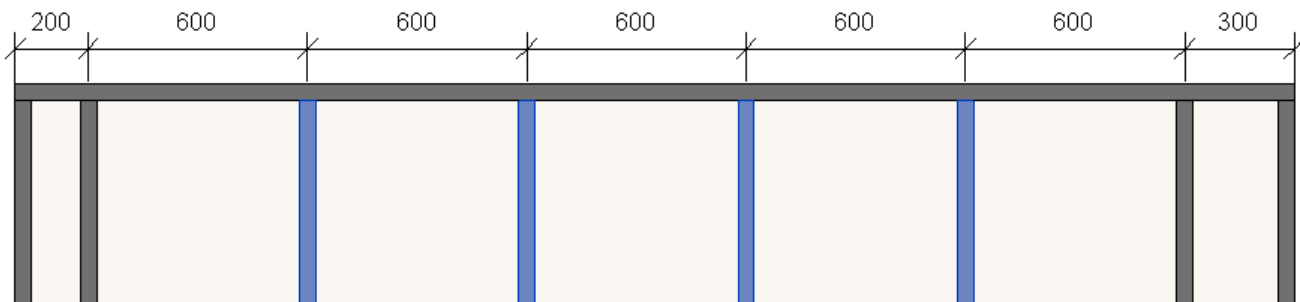


In the case you need to relocate the frame, just move the **Project Base Point** to the new position and update the frame!

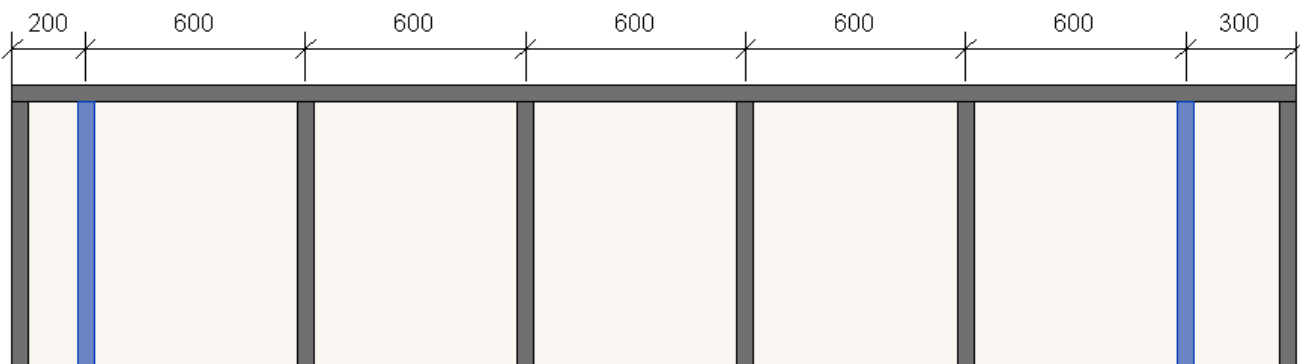
Joist Spacing and First/Last Spacing



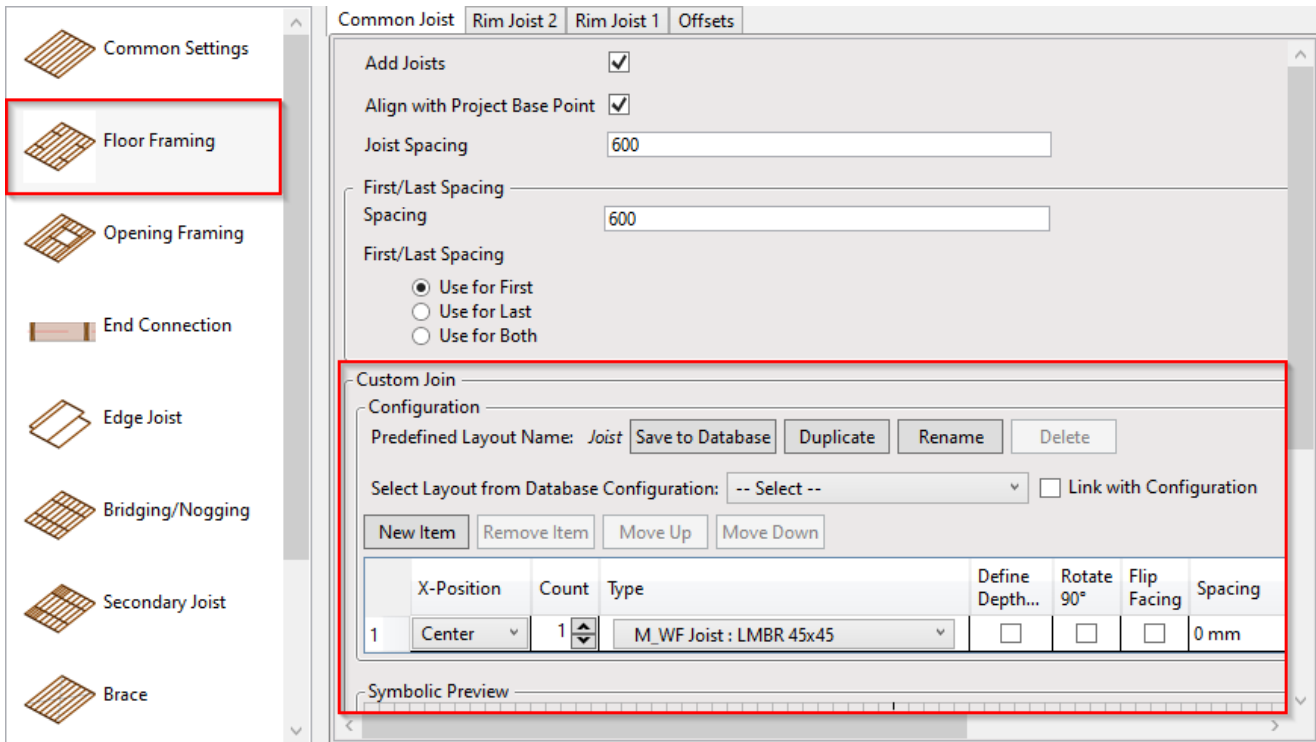
Joist Spacing – defines the distance between the joists.



First/Last Spacing – first spacing will be on the side of the left side, and last on the right side.

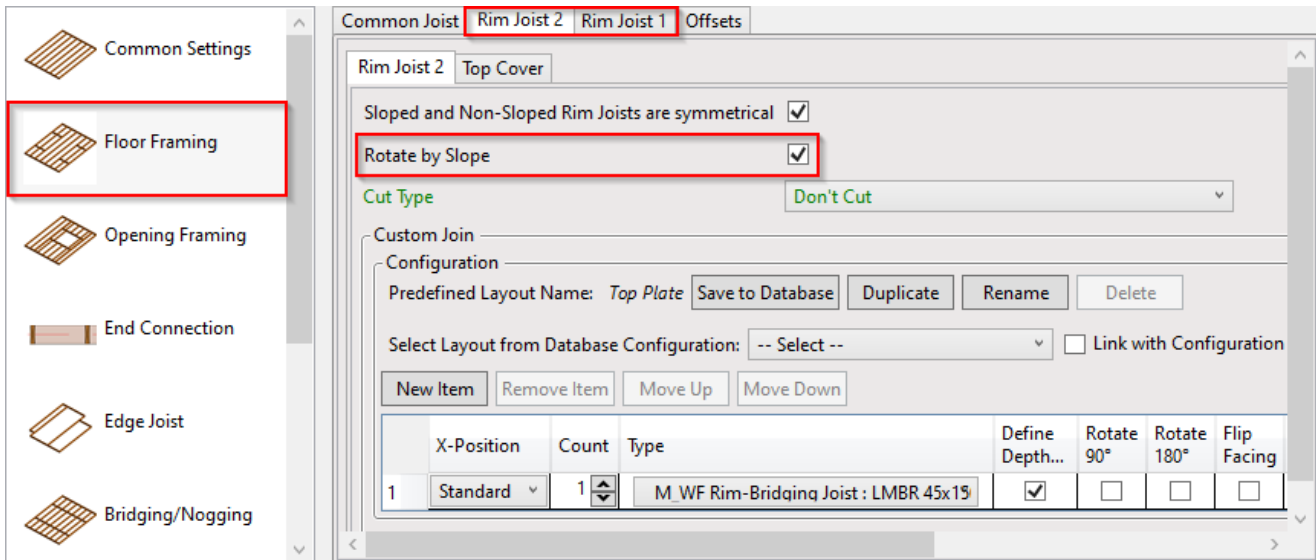


Custom Join



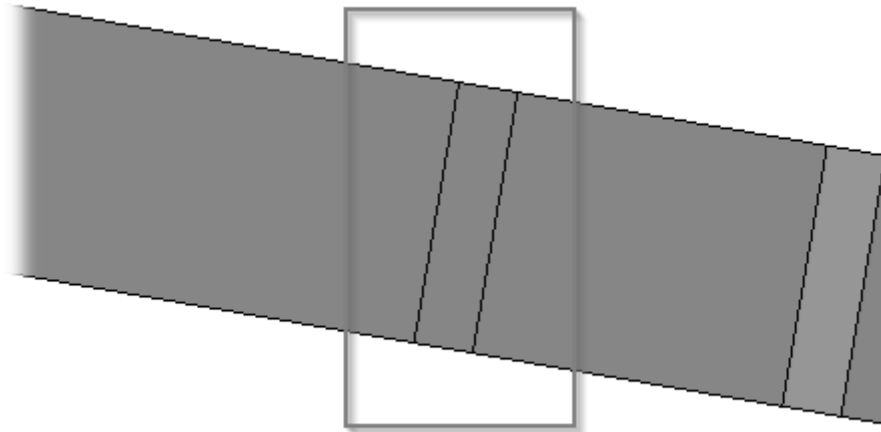
Custom Join – is a multi-functional dialog where user can define rules for joins including size, count, position, rotation, spacing, alignment etc. All these rules can be saved and used in other framing configurations or shared with other users. This type of dialog is used frequently in our products, so here you can find [Custom Join detailed description >>](https://agacad.freshdesk.com/support/solutions/articles/44001990031-custom-join) (<https://agacad.freshdesk.com/support/solutions/articles/44001990031-custom-join>)

Rotate by Slope

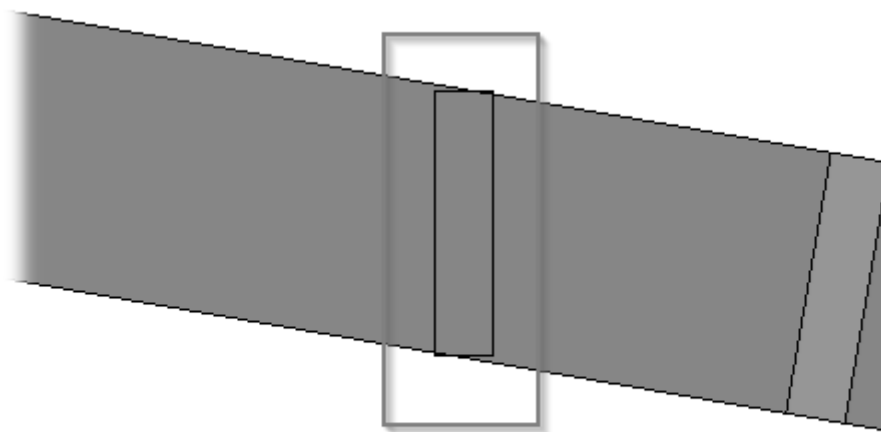


Rotate by Slope – rotates rim joist by floor slope.

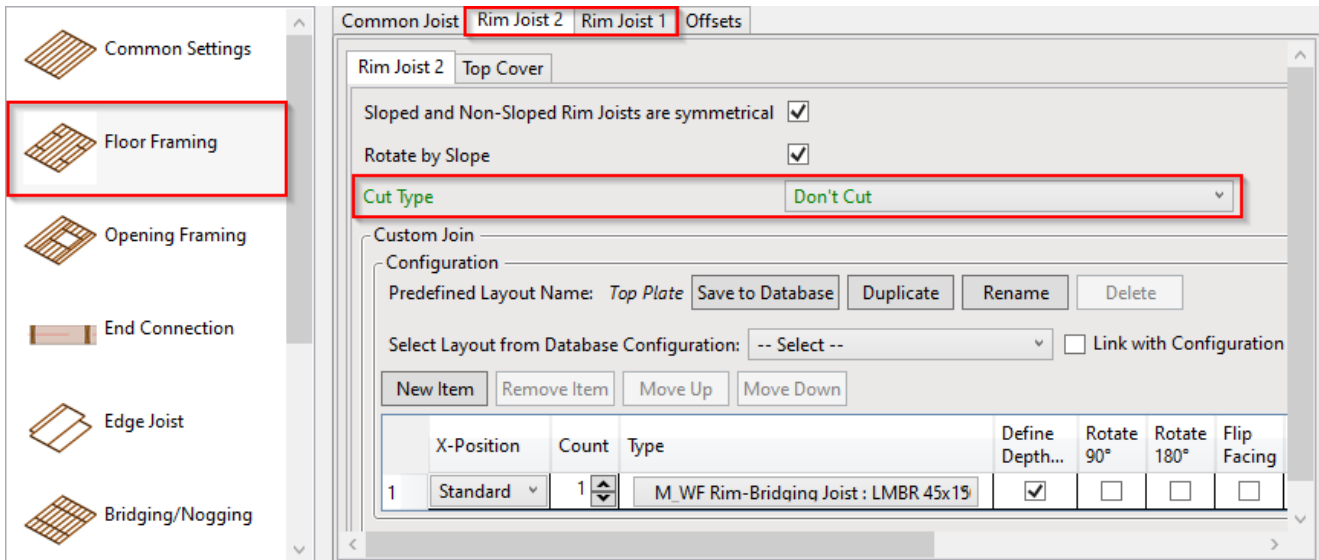
Ticked:



Unticked:

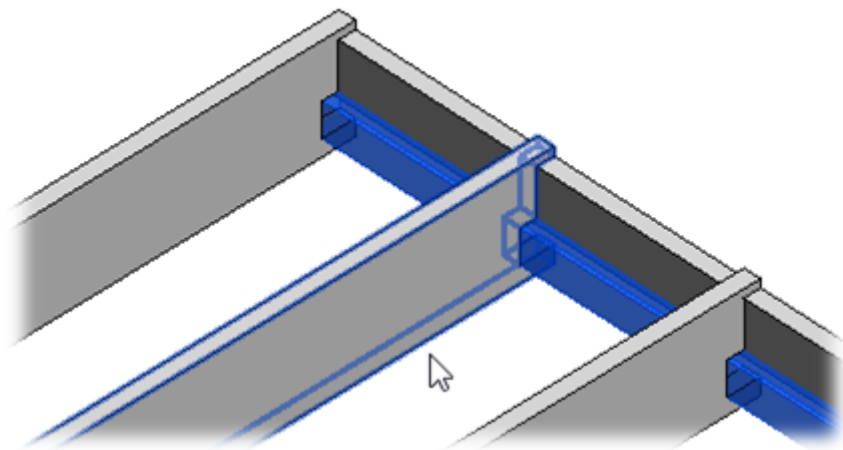


Cut Type

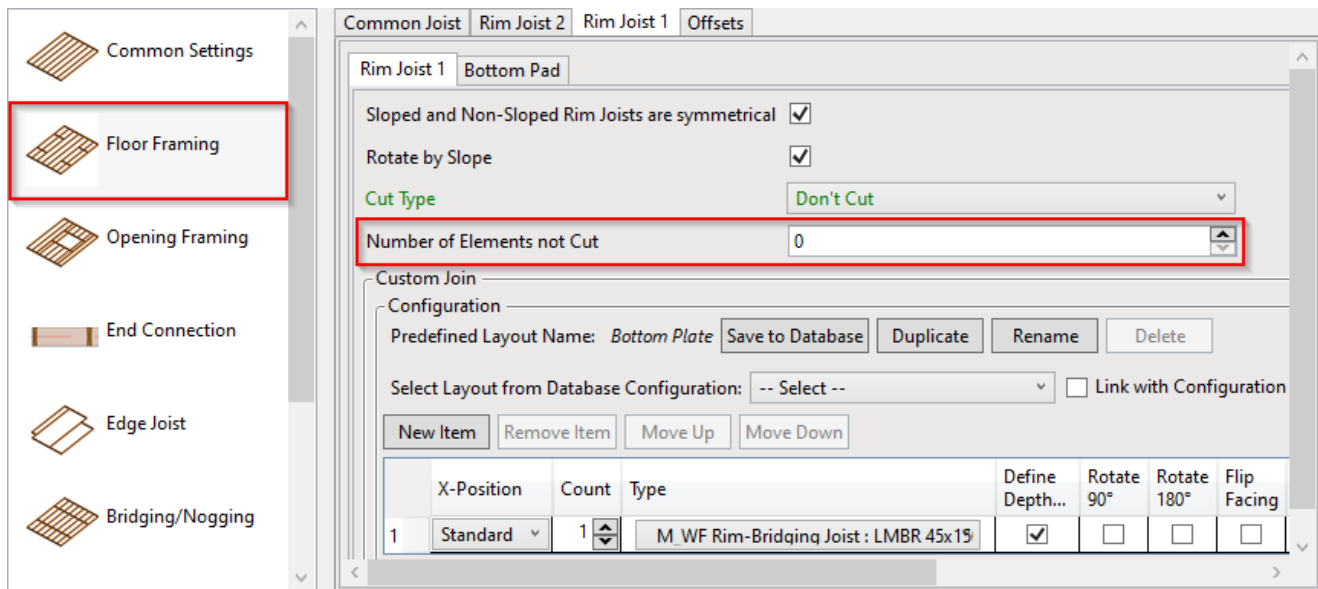


Cut Type – select Rim Joist cutting type.

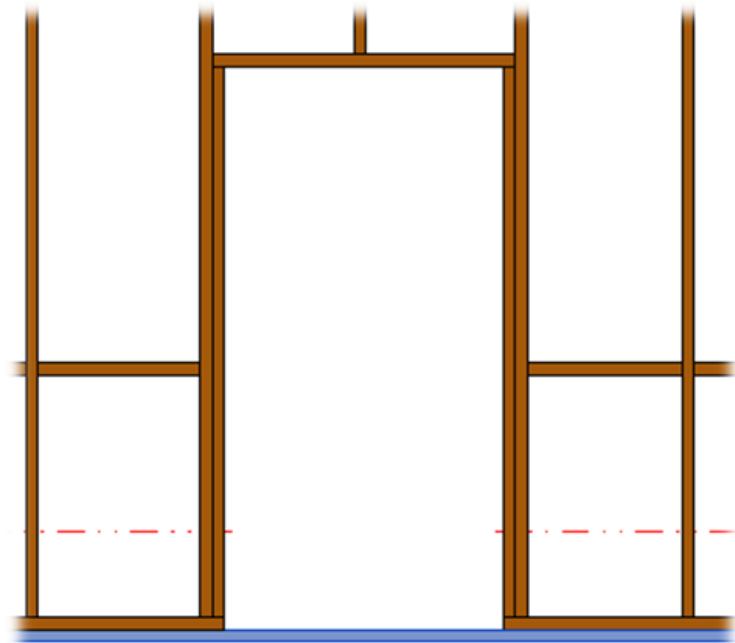
*Example: when **Plate Cut Studs** is selected:*



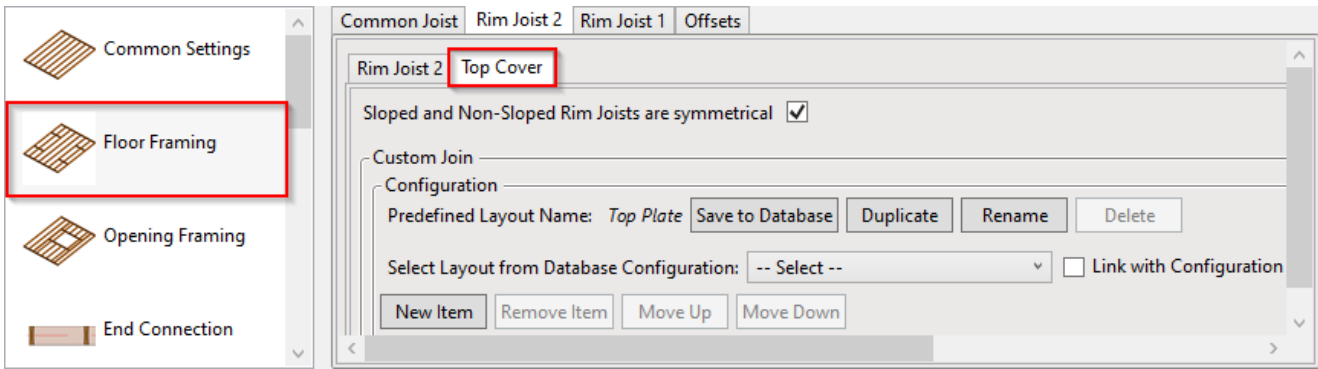
Number of Elements not Cut



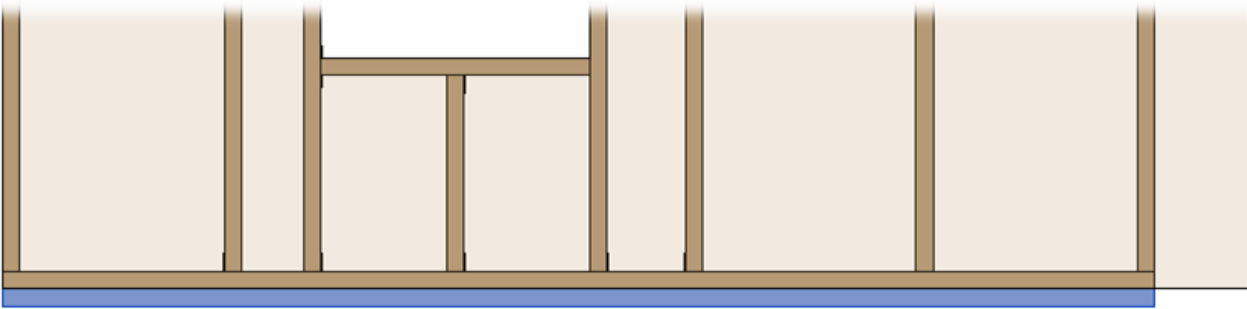
Number of Elements not Cut – if there is at least one rim joist 1, you can cut it or leave it as a whole.



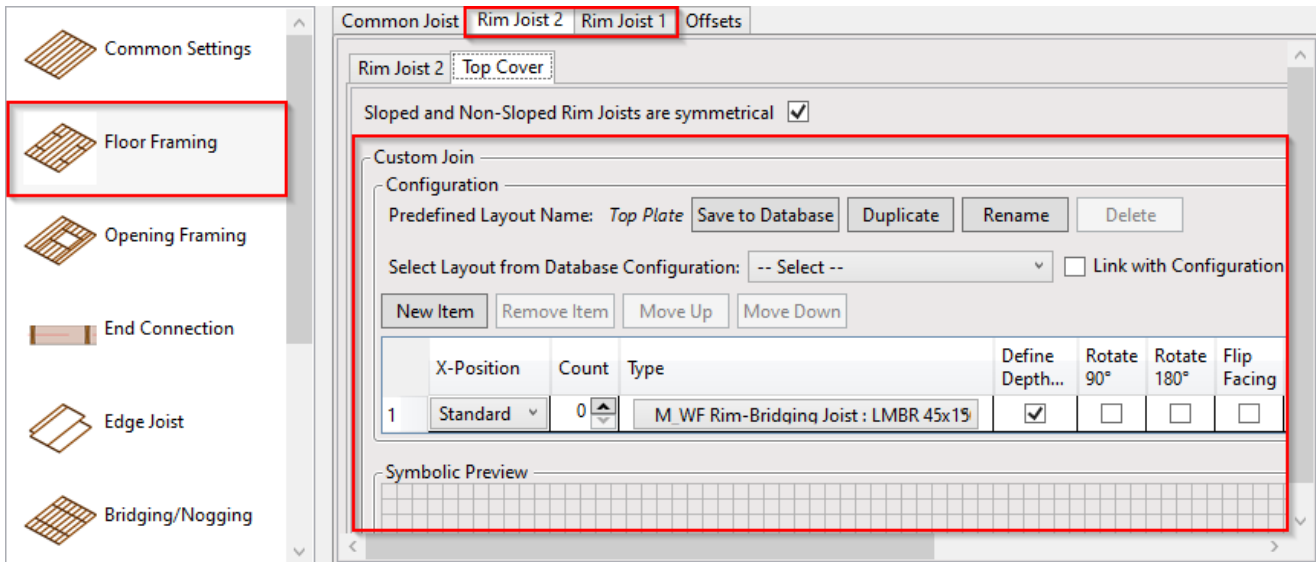
Top Cover/Bottom Pad



Top Cover/Bottom Pad will be added above/below the main frame.



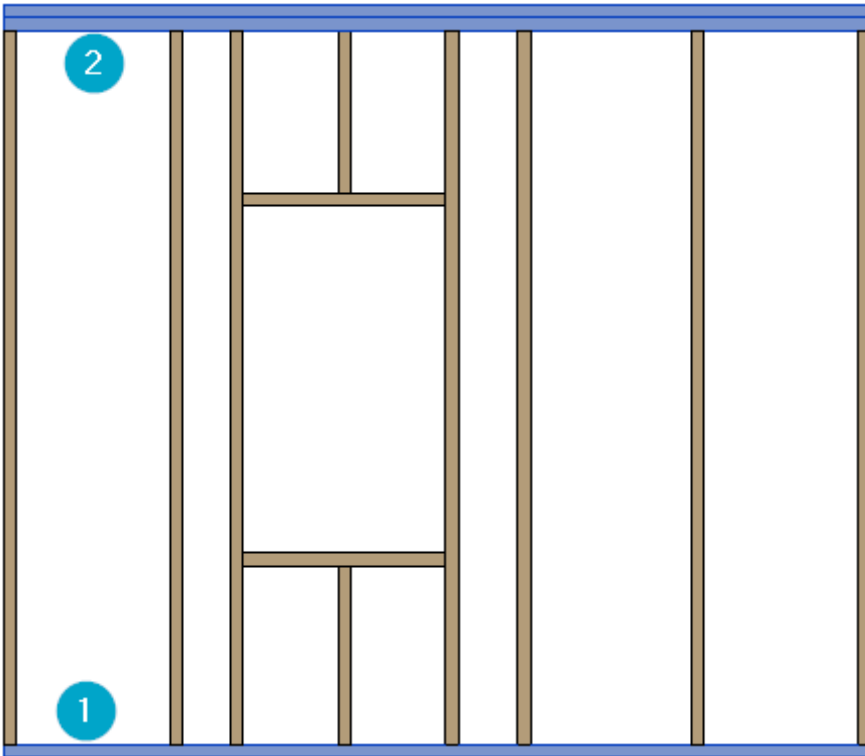
Custom Join



Example:

1 - Rim Joist 1, Count = 1

2 - Rim Joist 2, Count = 2



Custom Join – is a multi-functional dialog where user can define rules for joins including size, count, position, rotation, spacing, alignment etc. All these rules can be saved and used in other framing configurations or shared with other users. This type of dialog is used frequently in our products, so here you can find [Custom Join detailed description >>](https://agacad.freshdesk.com/support/solutions/articles/44001990031-custom-join) (<https://agacad.freshdesk.com/support/solutions/articles/44001990031-custom-join>)

Offsets

Common Settings	Common Joist	Rim Joist 2	Rim Joist 1	Offsets
	Framing Top/End Offset	-200	<input type="checkbox"/>	Apply Horizontally
	Framing Bottom/Base Offset	0	<input type="checkbox"/>	Apply Horizontally

Offset – frame offsets from floor end or base.

Example, framing top offset = -200:

