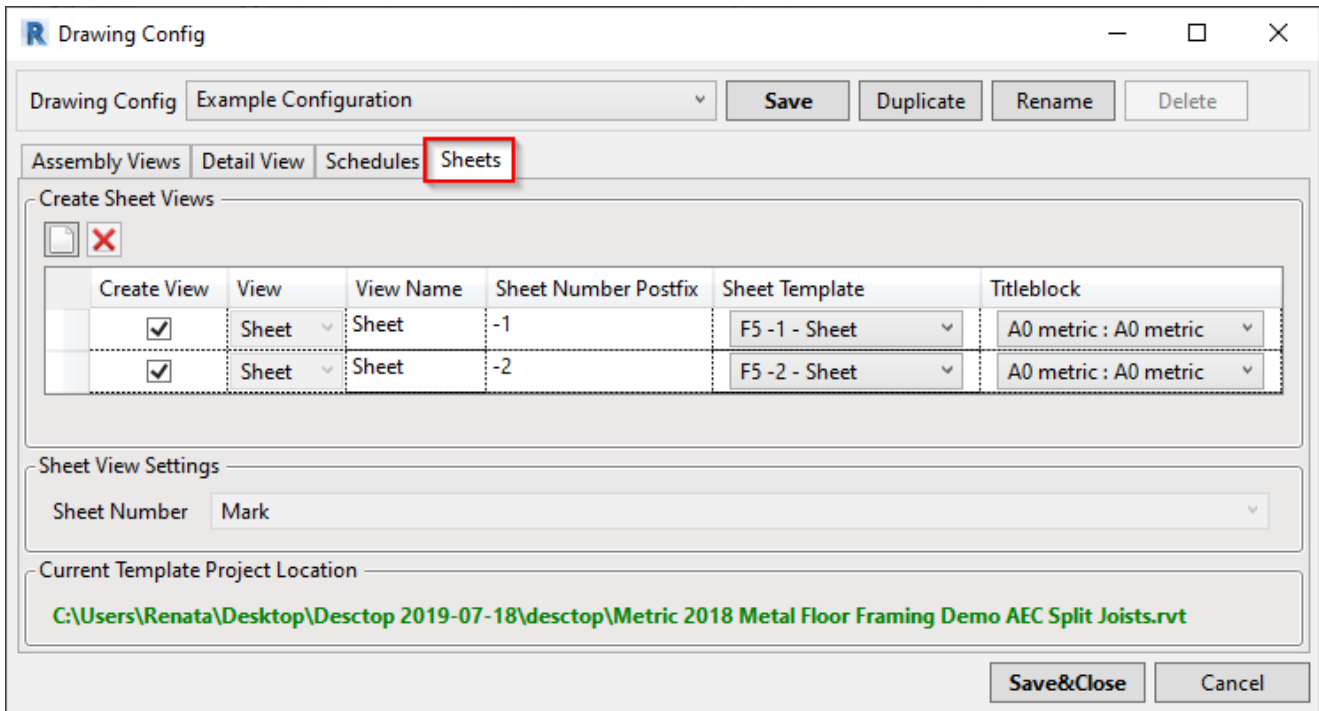
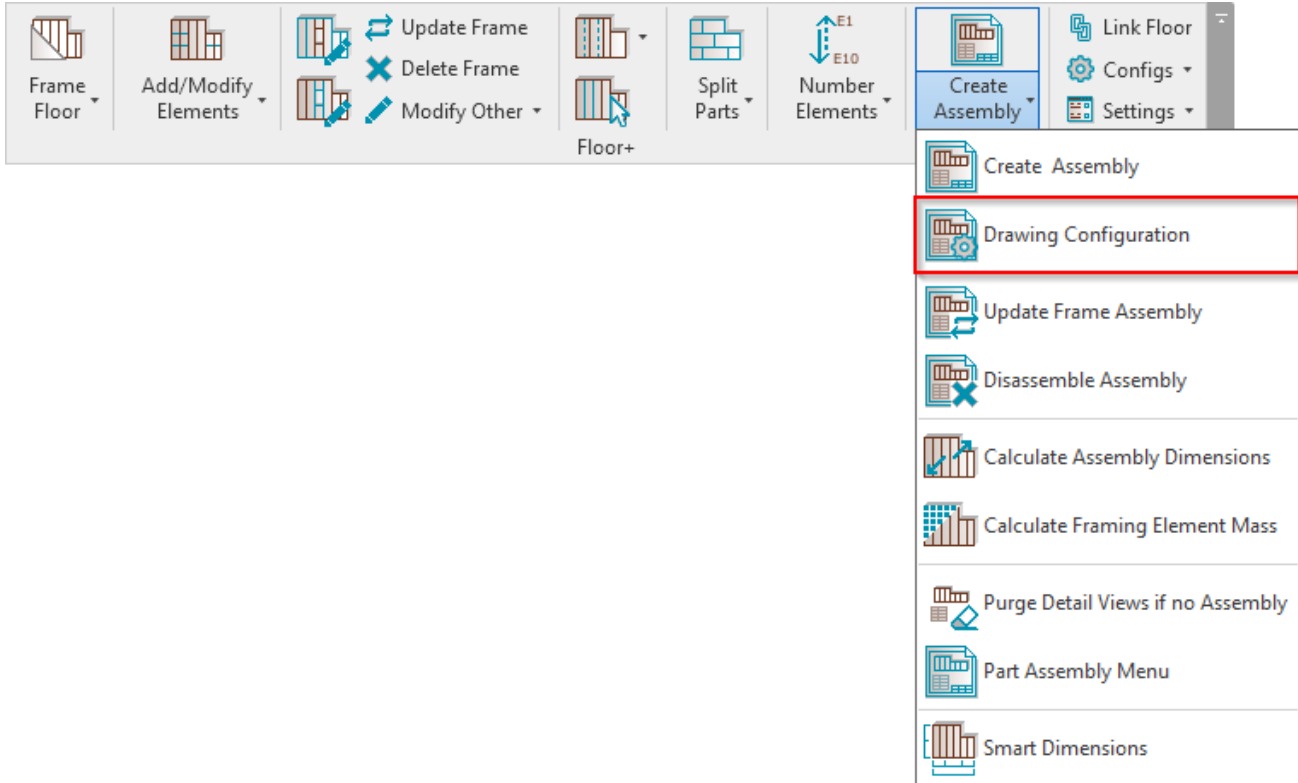


# SHOP DRAWINGS – Drawing Configuration – Sheets

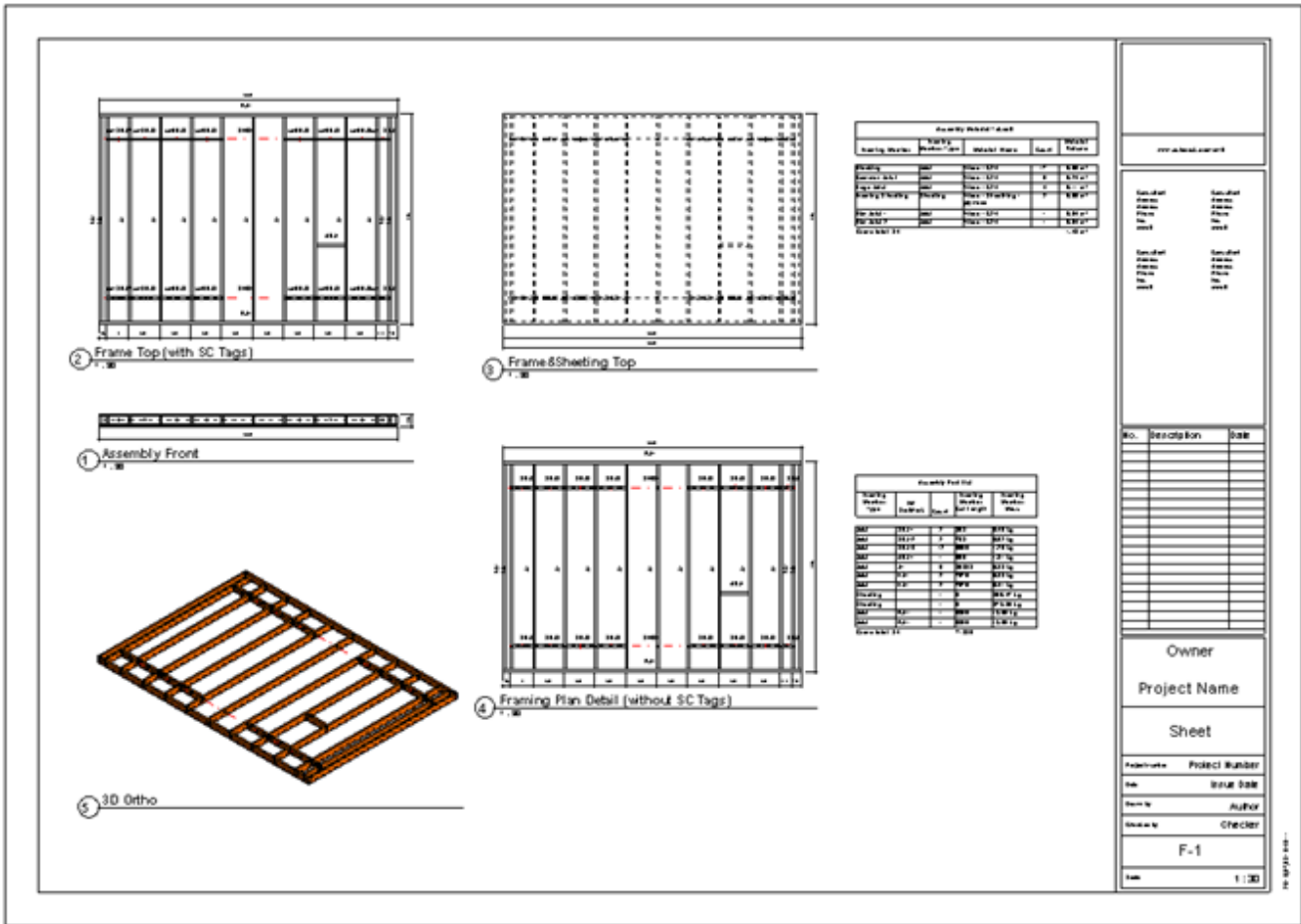
Modified on: Mon, 19 Aug, 2019 at 8:14 PM

## Sheets

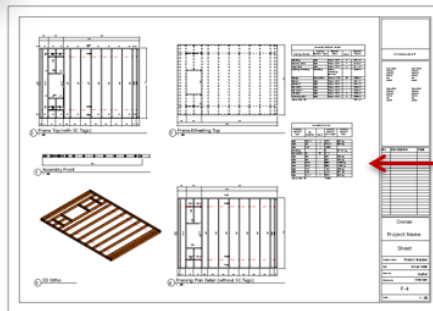
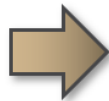
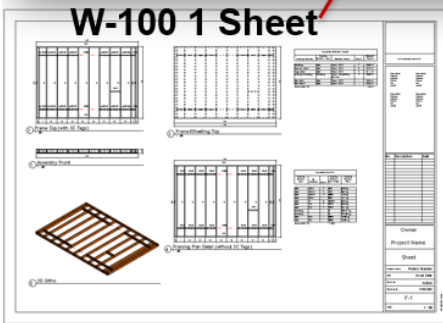
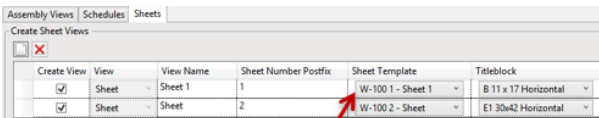


**Floor+** creates sheets in the floor assembly using predefined settings.

**Titleblock** – select the titleblock family to apply to assemblies. The titleblock family list comes from your current project.



Create first assembly → add views to the sheet manually → open **Drawing Configuration** → **Sheets** → select a sheet to be a template for other floors.



**Newly created assembly sheet**