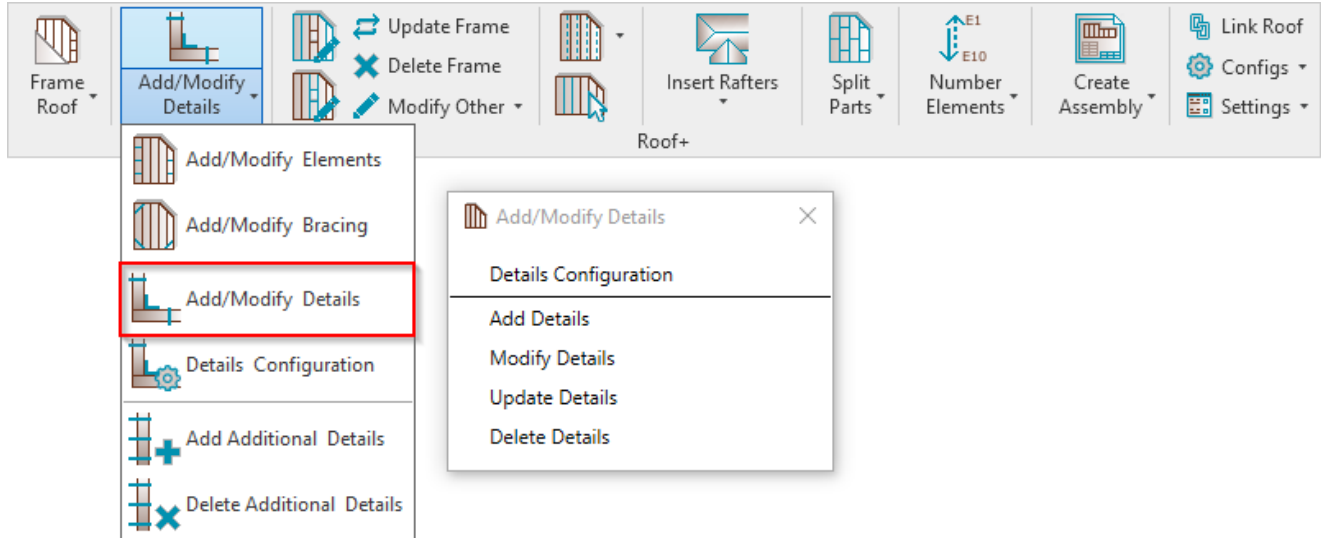


# ADD/MODIFY DETAILS

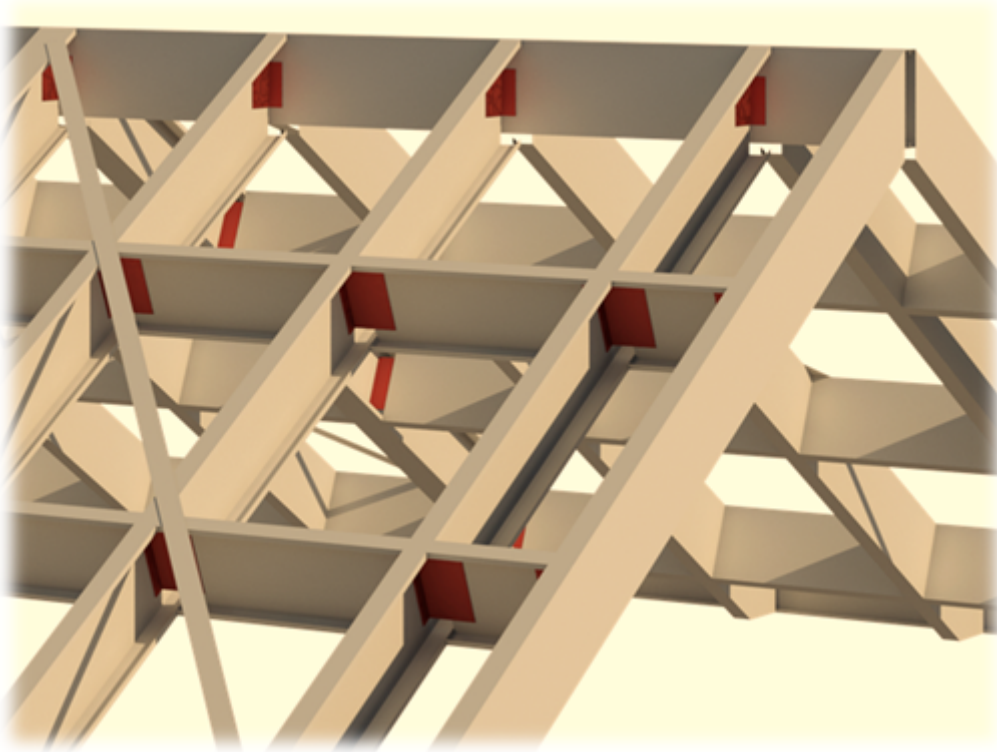
Modified on: Fri, 13 Sep, 2019 at 8:48 PM

## Add/Modify Details

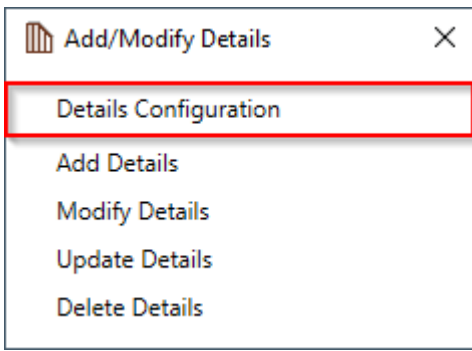


**Add/Modify Details** – for placing details in the frame. It is recommended to use these functions at the end of the framing process.

*Recommended workflow: Create frame without details → Add additional elements → Split elements if needed → In the final step, add details. This will allow you to save time during the updating process when you frame a roof.*



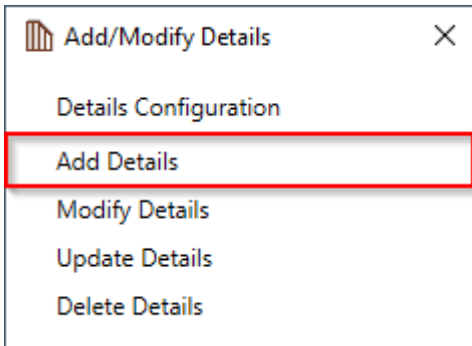
## Details Configuration



**Details Configuration** – definition of all detail placing parameters.

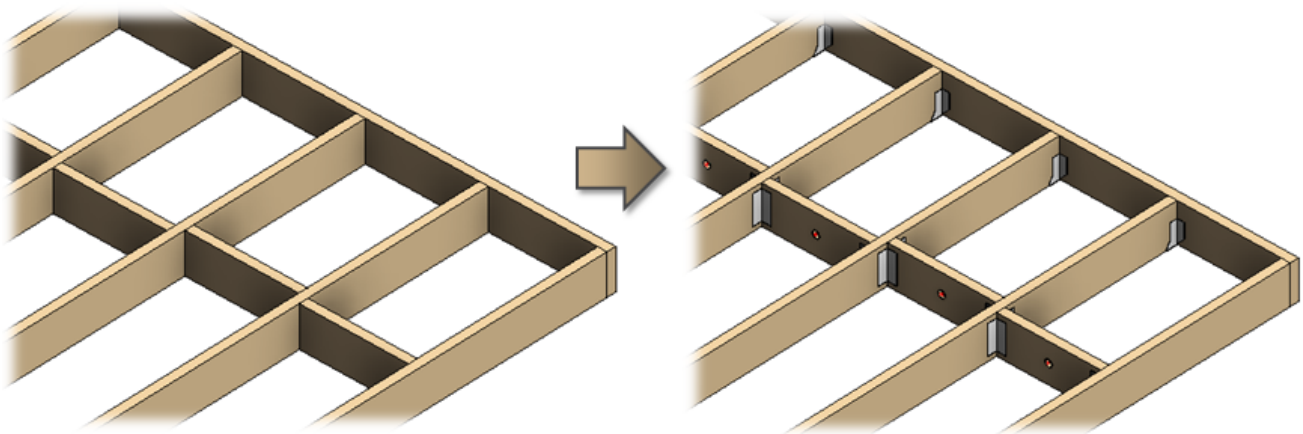
**Read more >>** (<https://agacad.freshdesk.com/support/solutions/articles/44001788177-add-modify-details-%E2%80%93-details-configuration>).

## Add Details

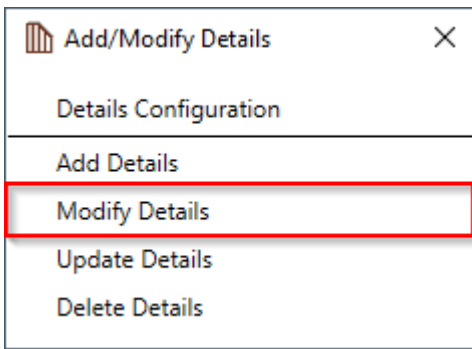


**Add Details** – adds details into selected roofs according to predefined configuration. Recommended to use this function at the end of the framing process.

*Recommended workflow: Create frame without details → Add additional elements → Split elements if needed → In the final step, add details. This will save time during the updating process when you frame a roof.*

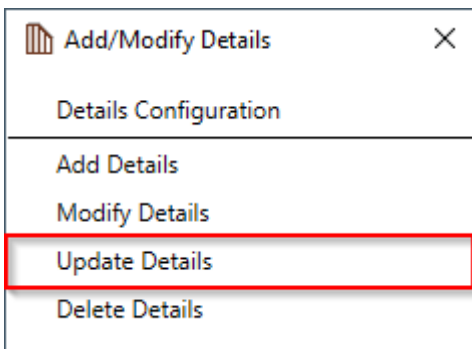


## Modify Details

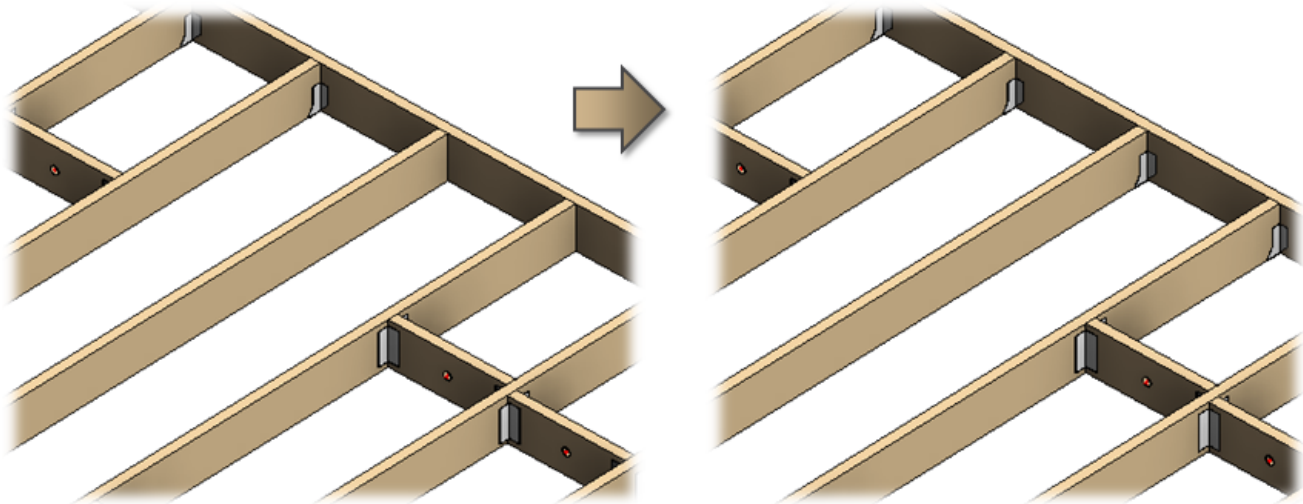


**Modify Details** – modifies selected roof details with custom settings if you need to make unique changes. All configuration settings are the same as in **Details Configuration**.

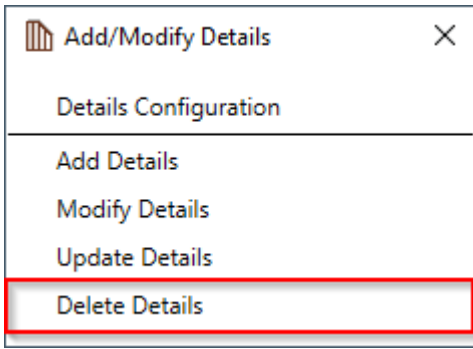
## Update Details



**Update Details** – updates details if any changes were made to roof, e.g. opening was moved, roof was extended, etc.



## Delete Details



**Delete Details** – deletes details from selected frame.

