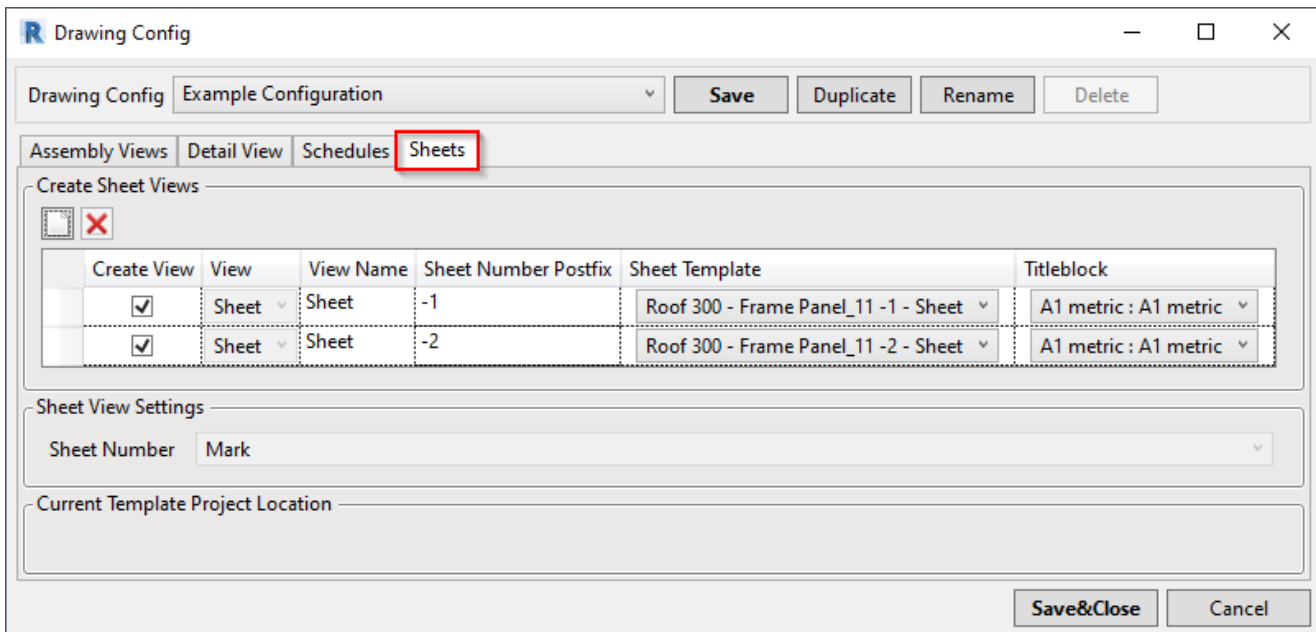
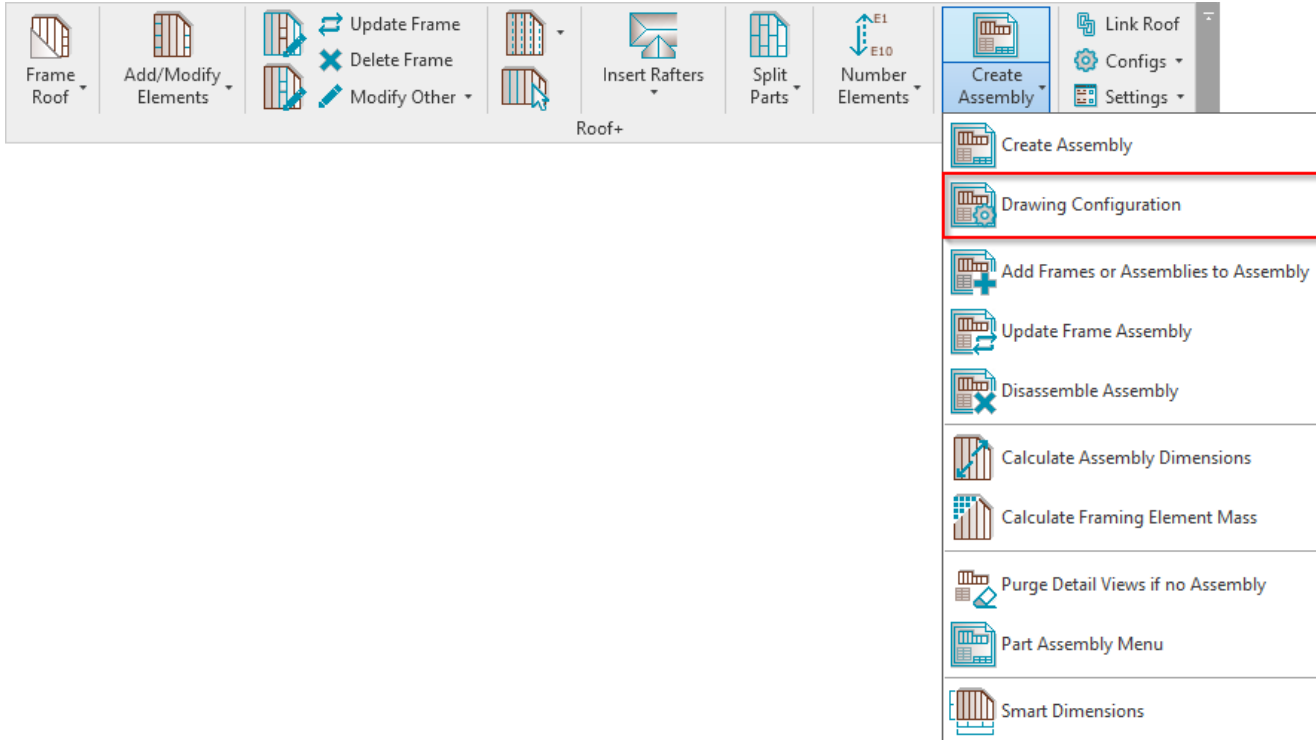


SHOP DRAWINGS – Drawing Configuration – Sheets

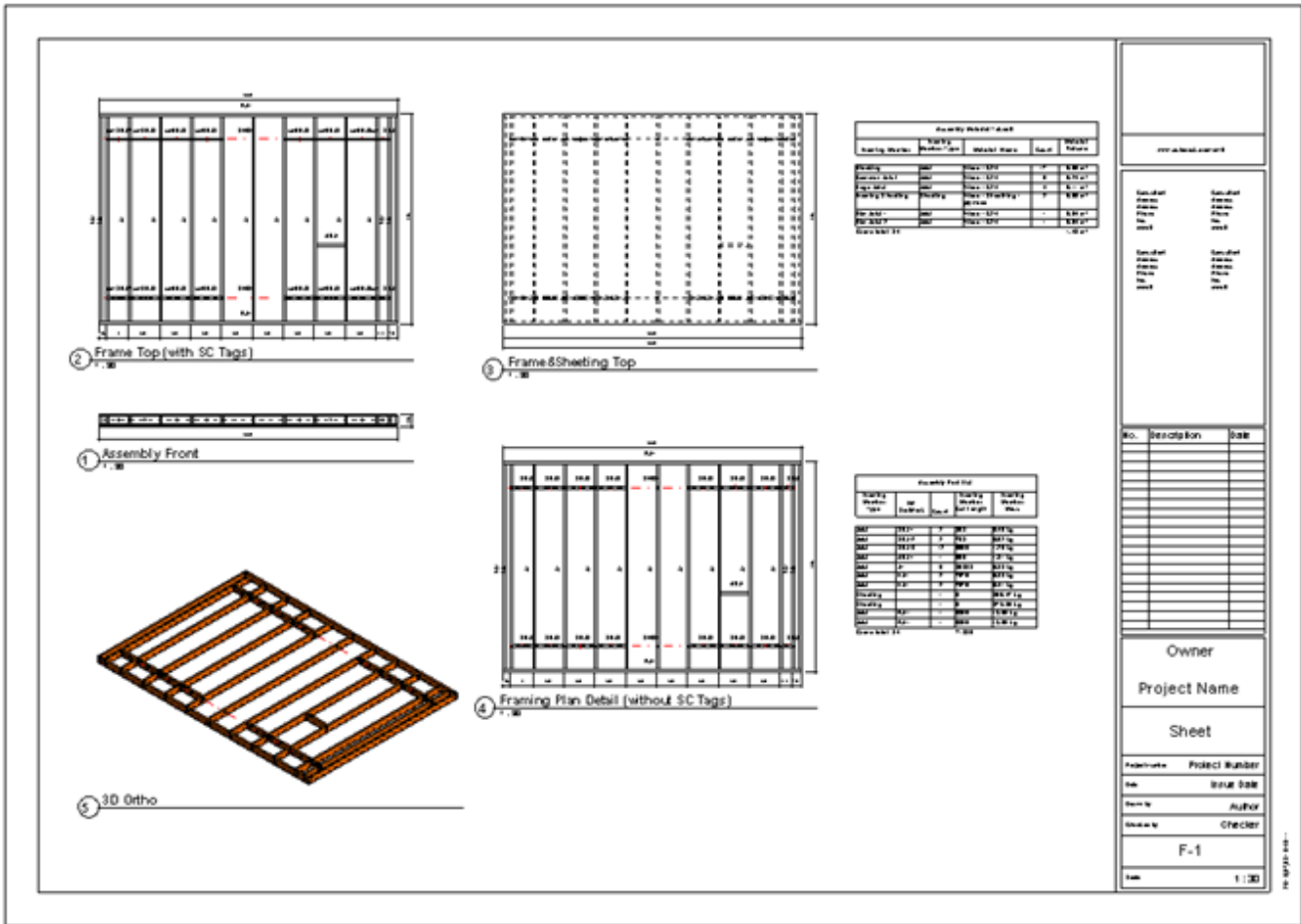
Modified on: Sat, 14 Sep, 2019 at 10:27 AM

Sheets

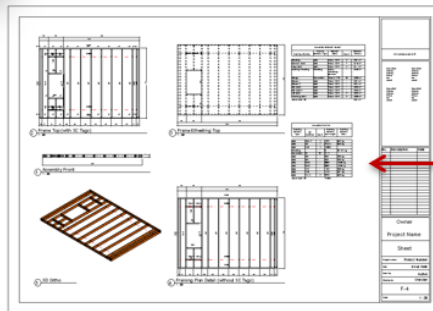
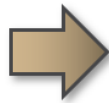
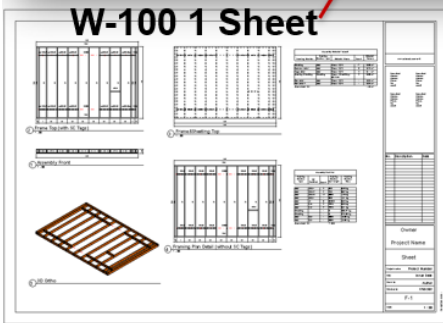
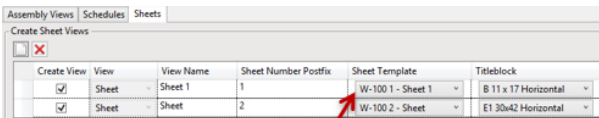


Roof+ creates sheets in the roof assembly using predefined settings.

Titleblock – select the titleblock family to apply to assemblies. The titleblock family list comes from your current project.



Create first assembly → add views to the sheet manually → open **Drawing Configuration** → **Sheets** → select a sheet to be a template for other roofs.



Newly created assembly sheet