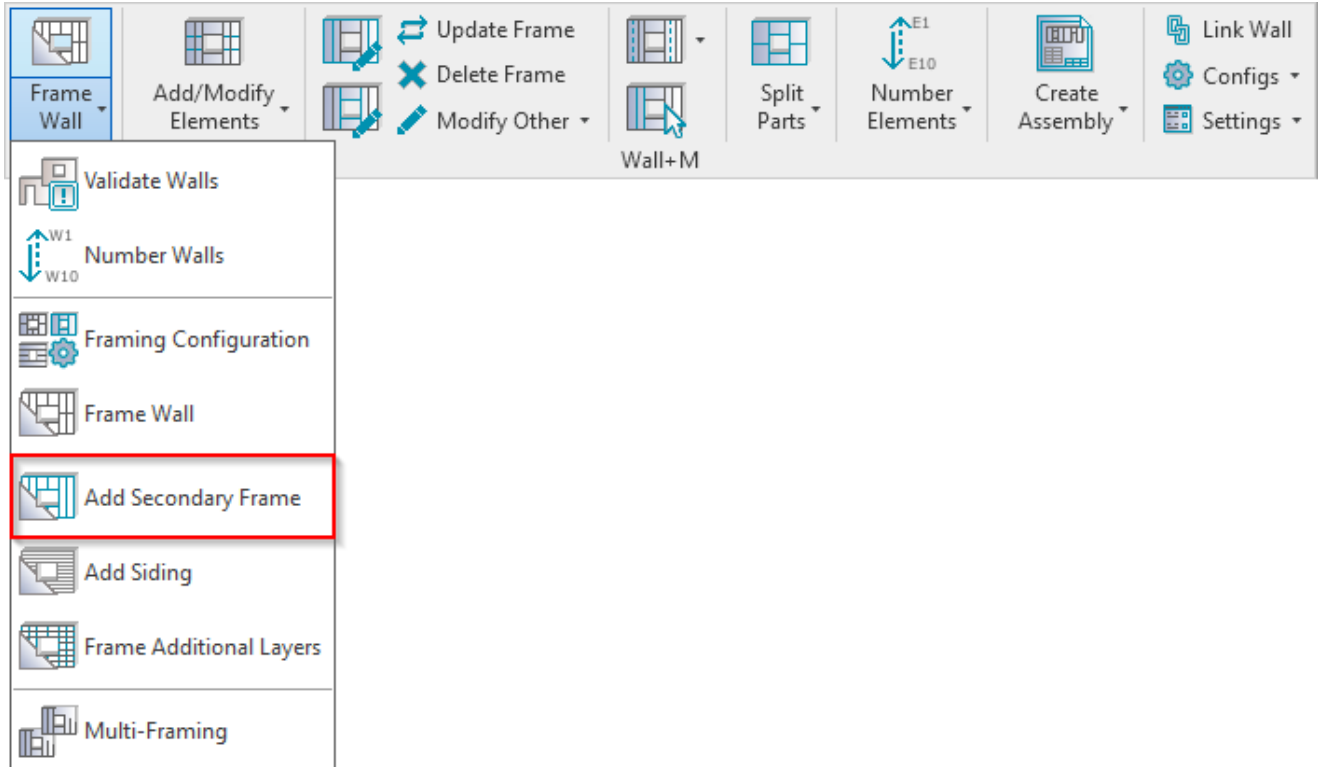


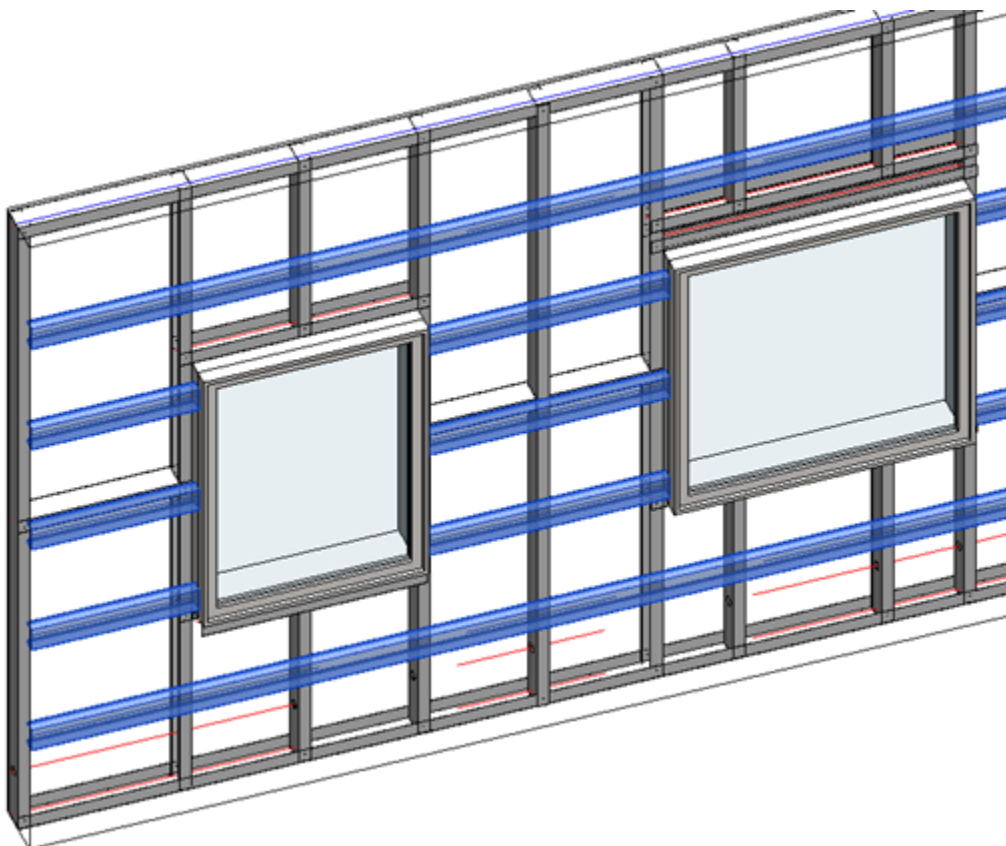
FRAME WALL – ADD SECONDARY FRAME, SIDING

Modified on: Thu, 29 Aug, 2019 at 8:46 PM

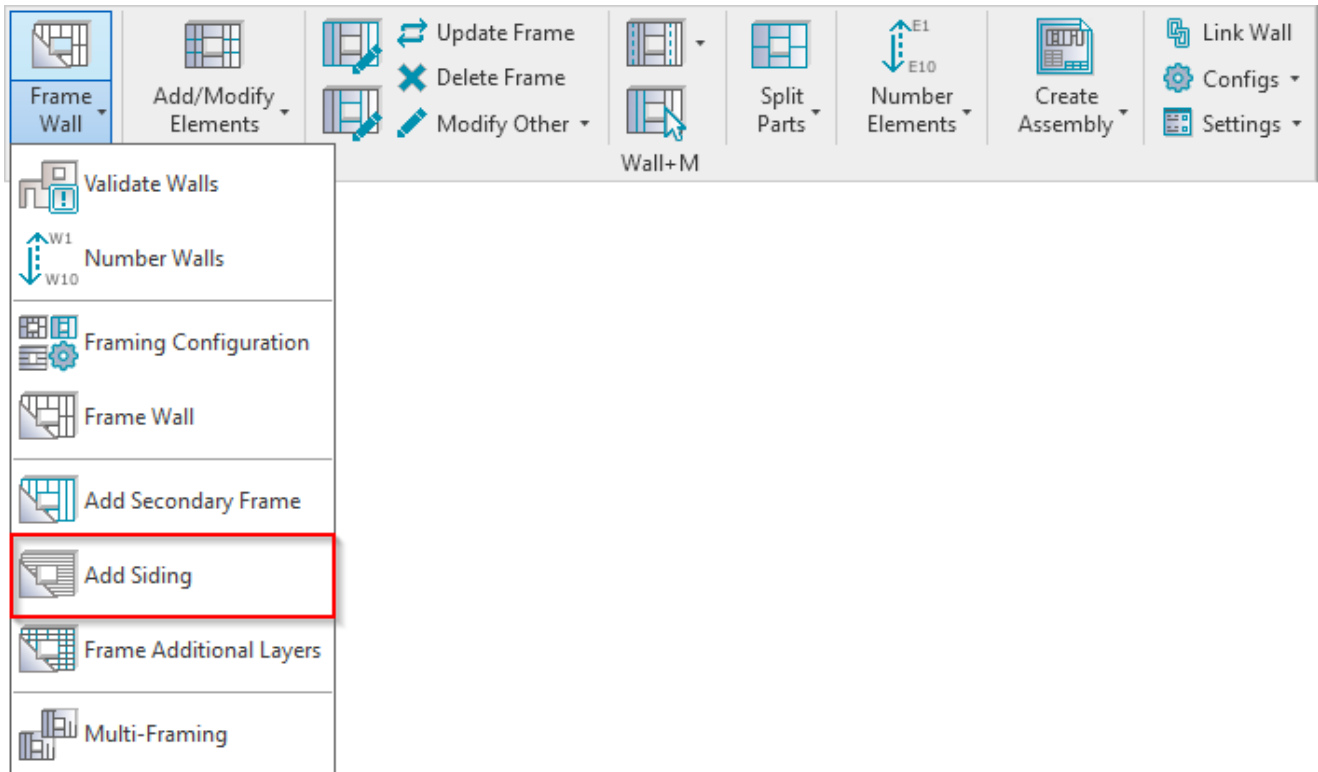
Add Secondary Frame



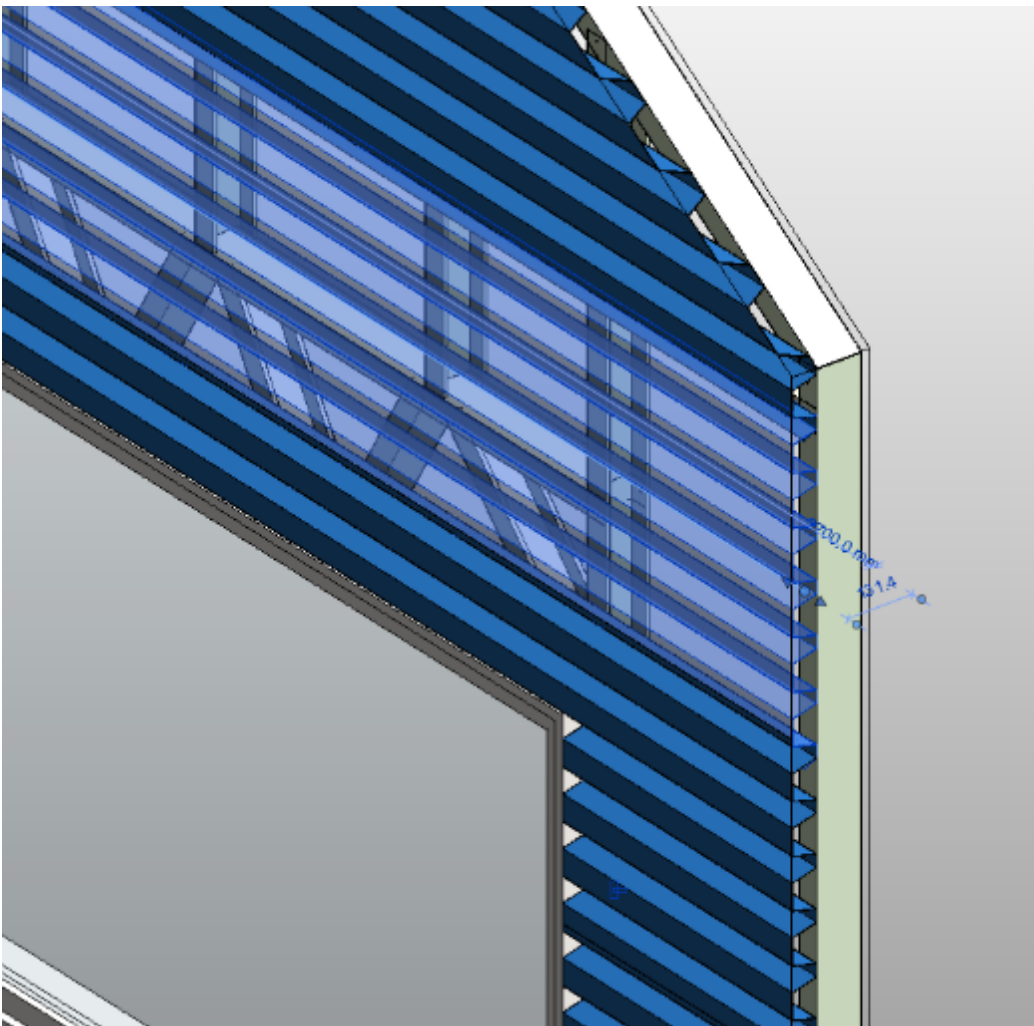
Add Secondary Frame – adds secondary frame to selected walls.



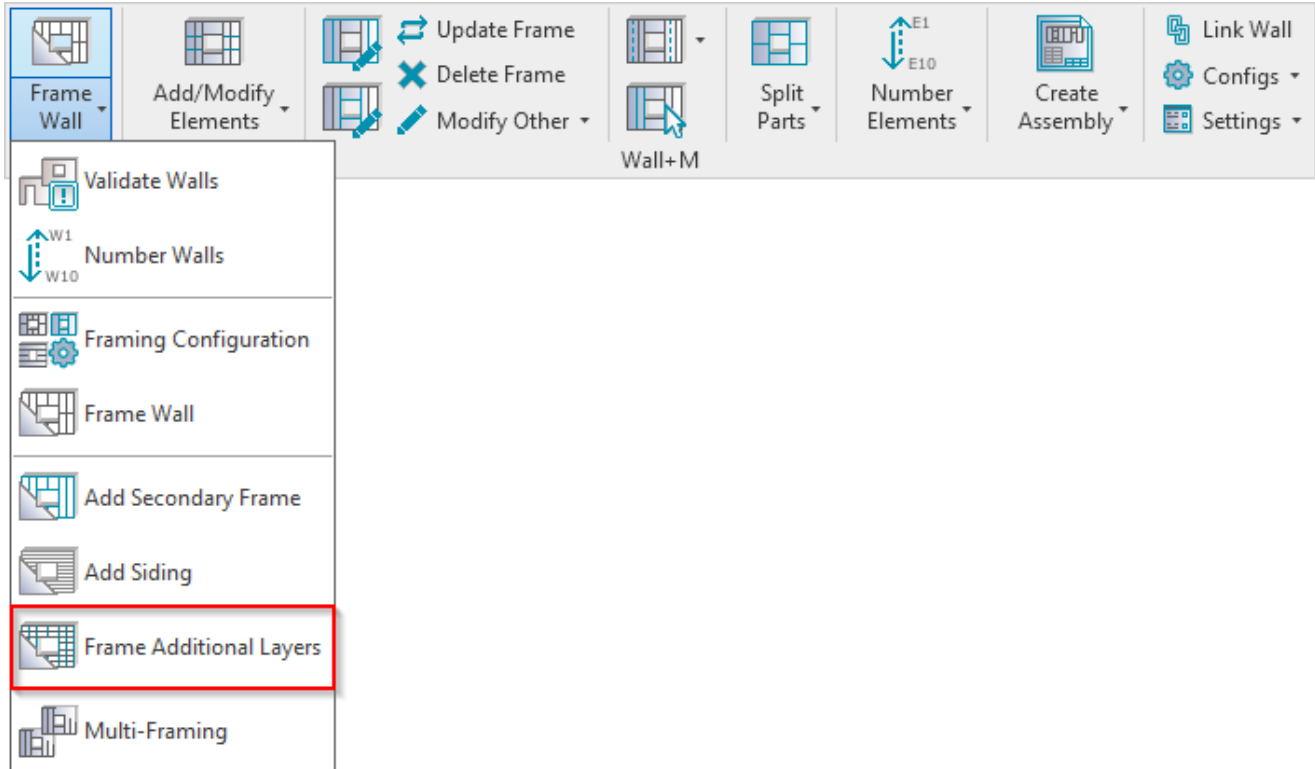
Add Siding



Add Siding – adds vertical, horizontal, or mixed siding to selected walls.



Frame Additional Layers



Frame Additional Layers – automatically frames all other layers (sidings, secondary frame) excluding the Main Frame. (No need to click **Add Secondary Frame** or **Add Sidings** separately.)

The layers to be framed need to be selected in the **Frame** column in **Link Wall**.