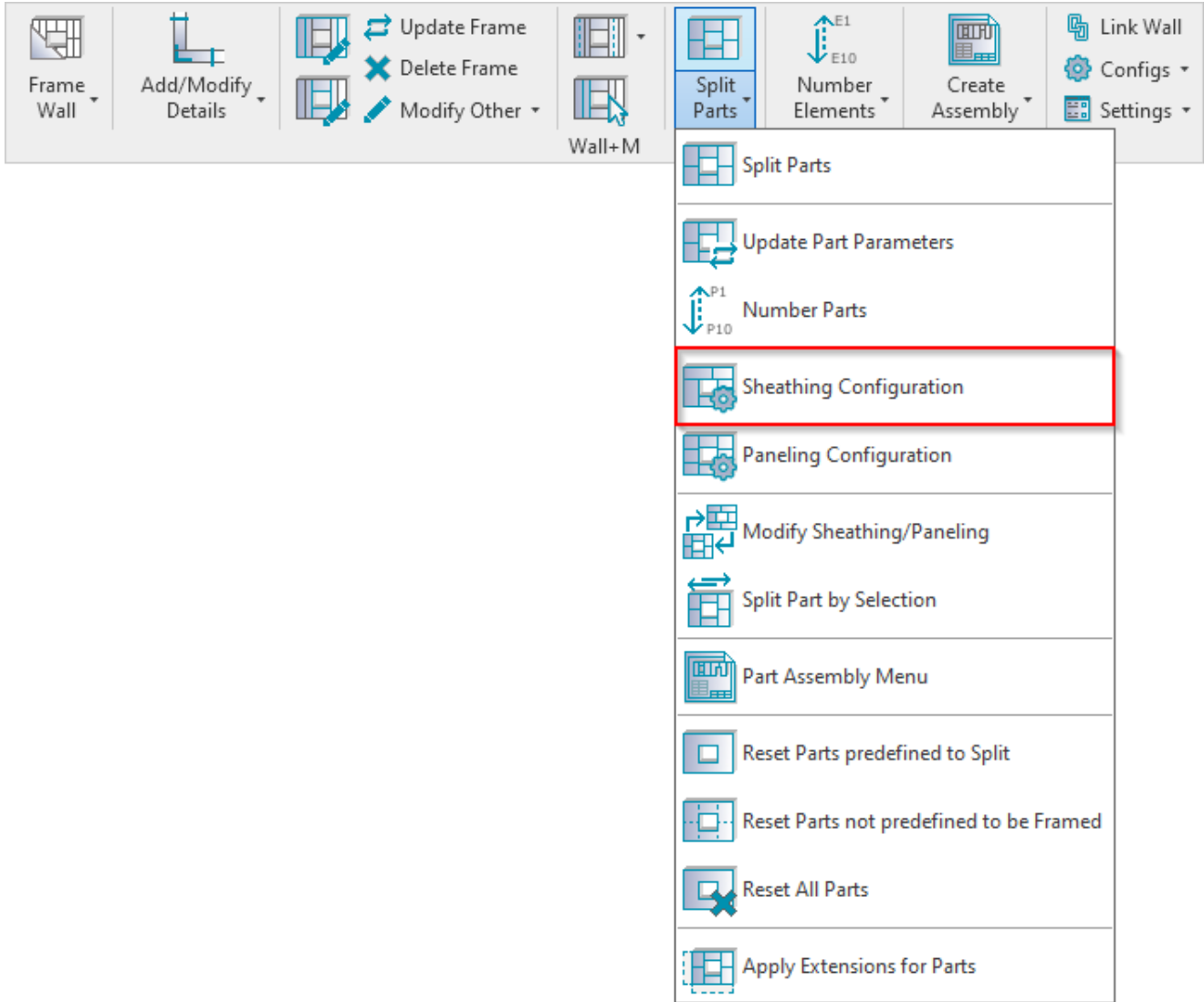


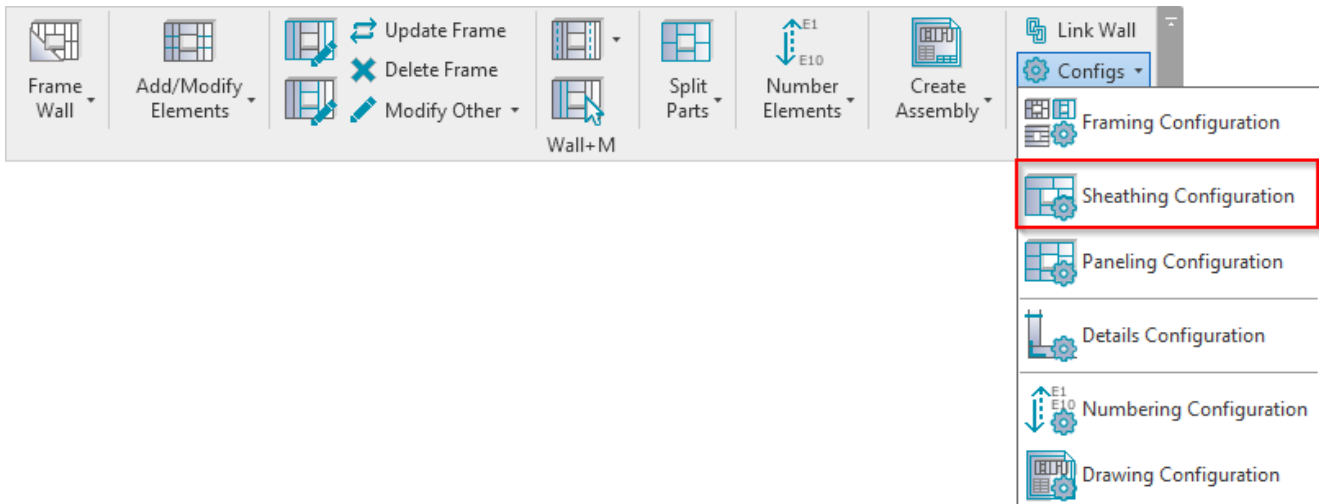
SHEATHING and PANELING LAYOUTS – Sheathing Configuration

Modified on: Sun, 3 Jan, 2021 at 6:56 PM

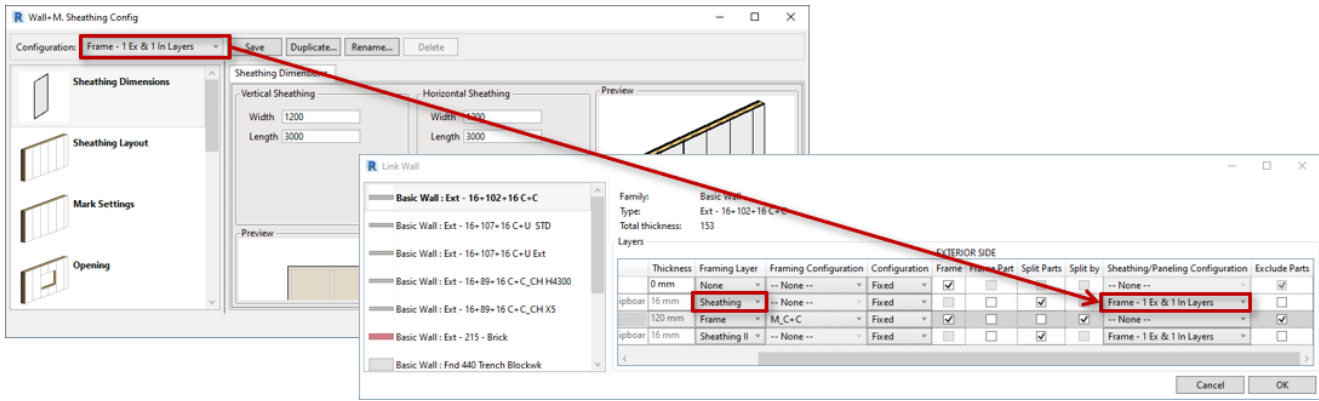
Sheathing Configuration



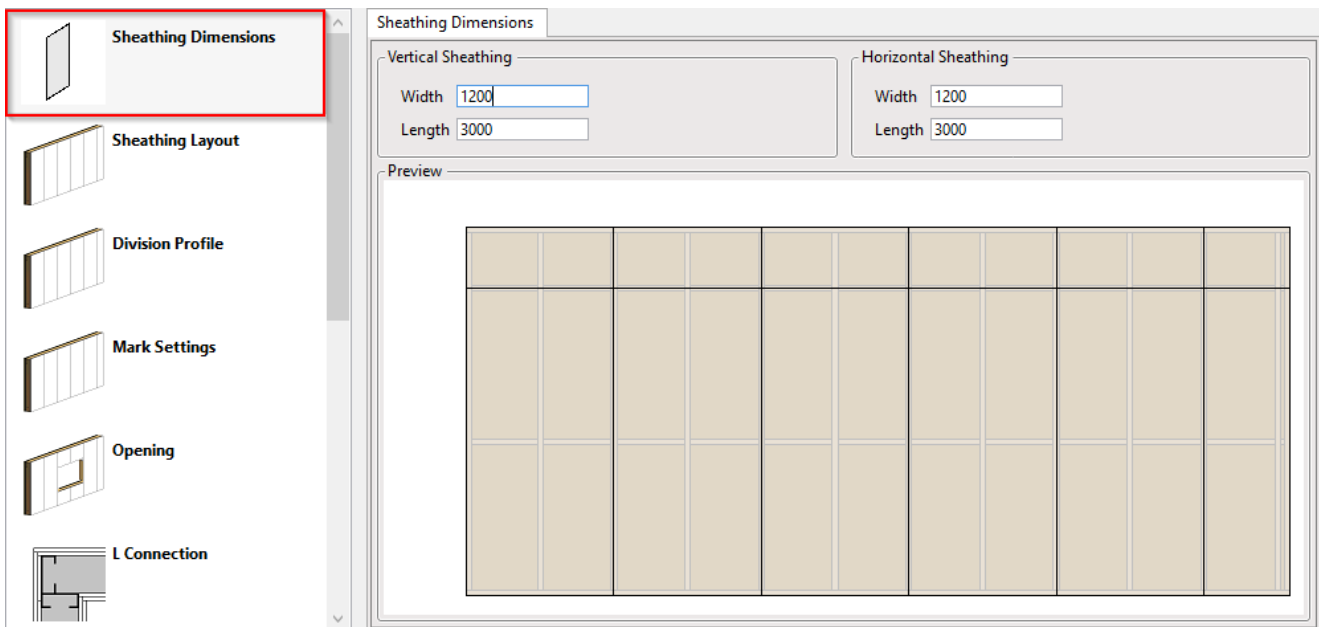
or:



Sheathing Configuration – allows you to configure and save settings for sheathing layouts. These settings can be saved and linked with wall layer using **Link Wall**.

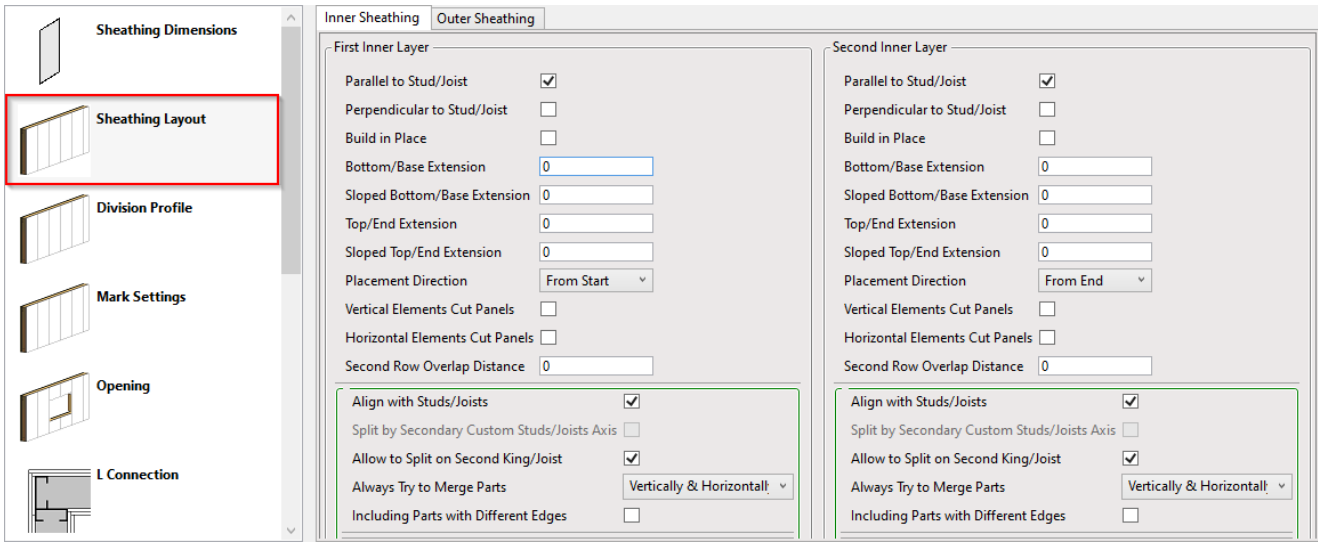


Sheathing Dimensions



Sheathing Dimensions – predefine vertical and horizontal sheathing sizes (Width and Length).

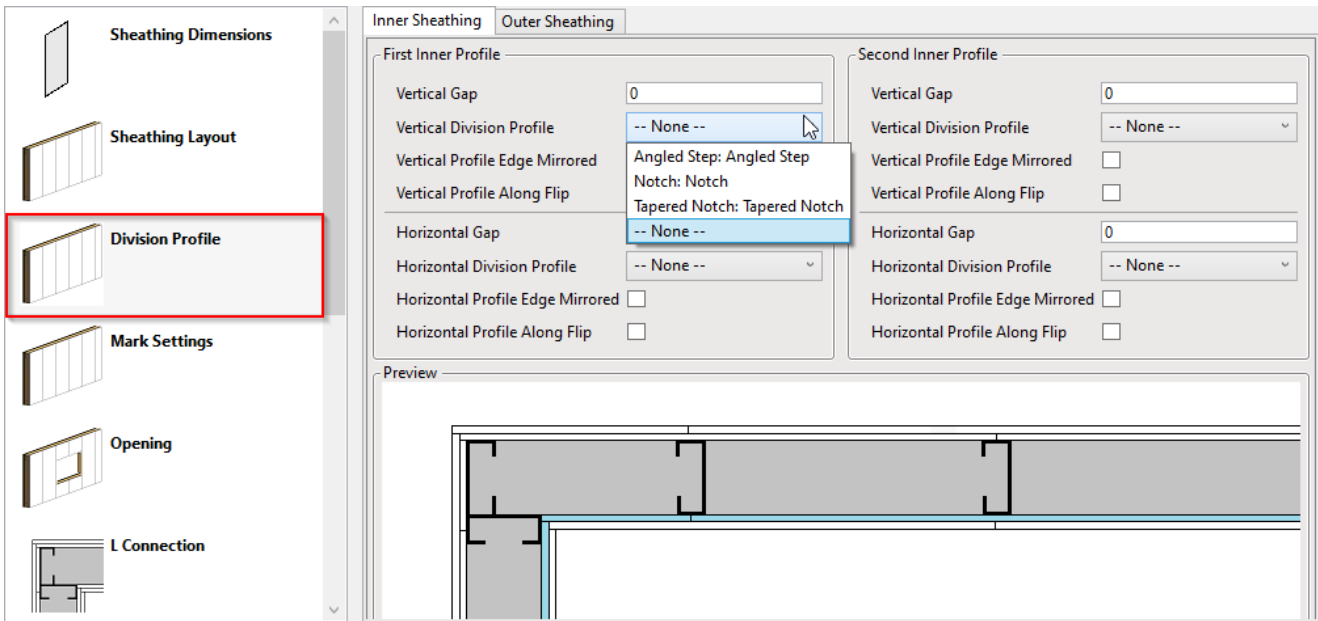
Sheathing Layout



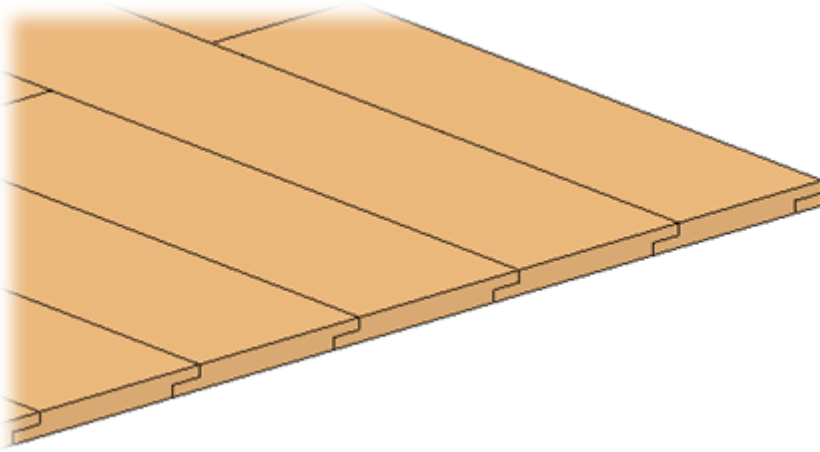
Sheathing Layout – predefine settings for Inner and Outer sheathing layers.

Read more about every feature here >> (<https://agacad.freshdesk.com/support/solutions/articles/44002140222-sheathing-and-paneling-layouts-%E2%80%93-sheathing-configuration-%E2%80%93-sheathing-layout>)

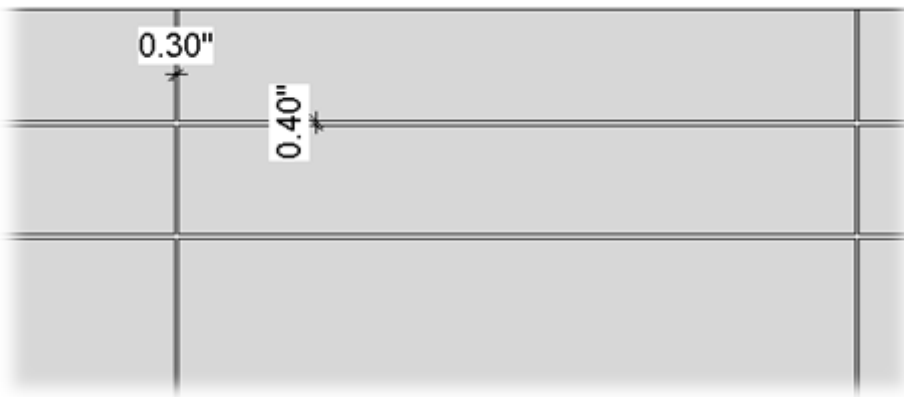
Division Profile



Division Profile – apply the pre-loaded profile and settings to part edges along dividers.



Horizontal/Vertical Gap – specifies the distance between divided horizontal and vertical parts. The default value is 0, which results in no gap.

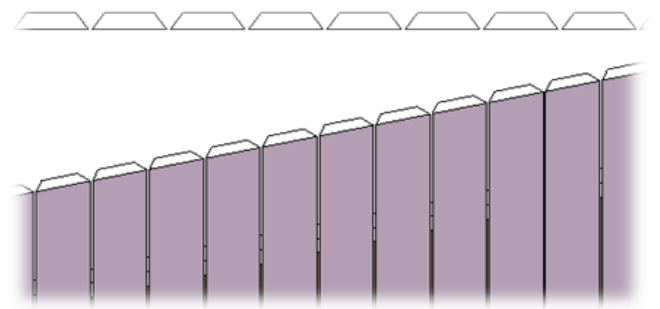
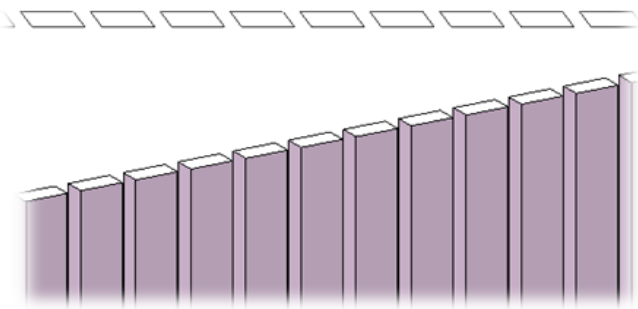


Horizontal/Vertical Division Profile – apply the pre-loaded profile you select from the drop-down list to part edges along dividers. The default value is None.

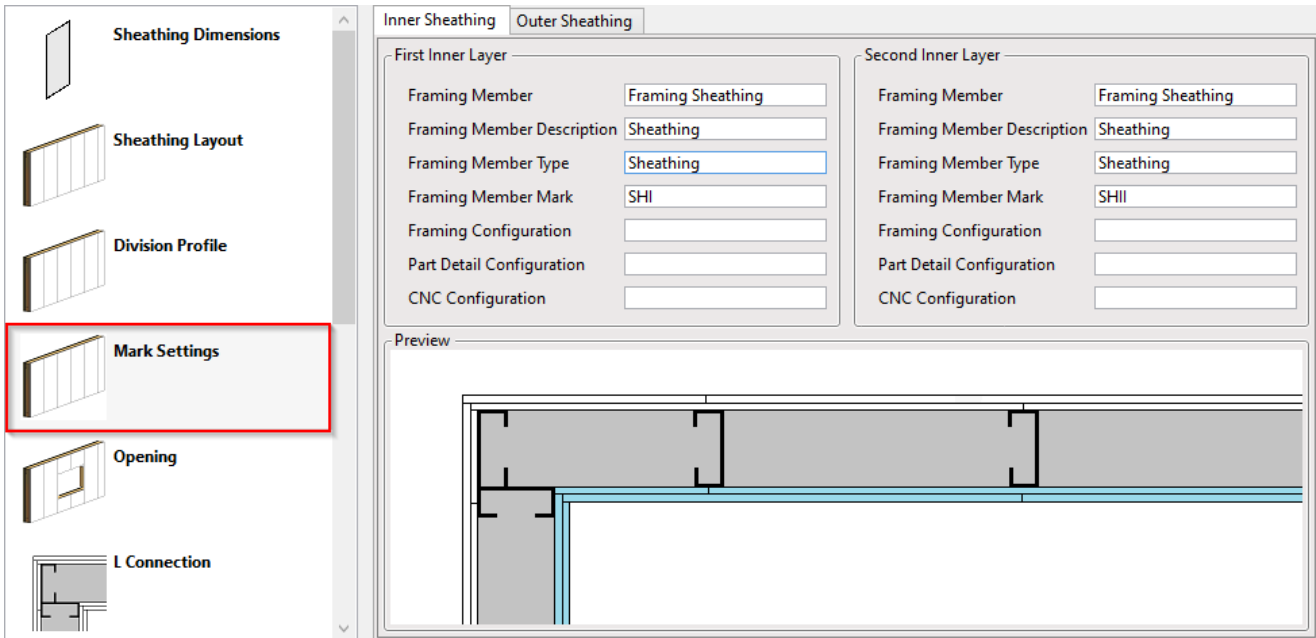
Horizontal/Vertical Profile Edge Mirrored – specify how the profiles on the other side of a divider gap will be oriented.

unticked

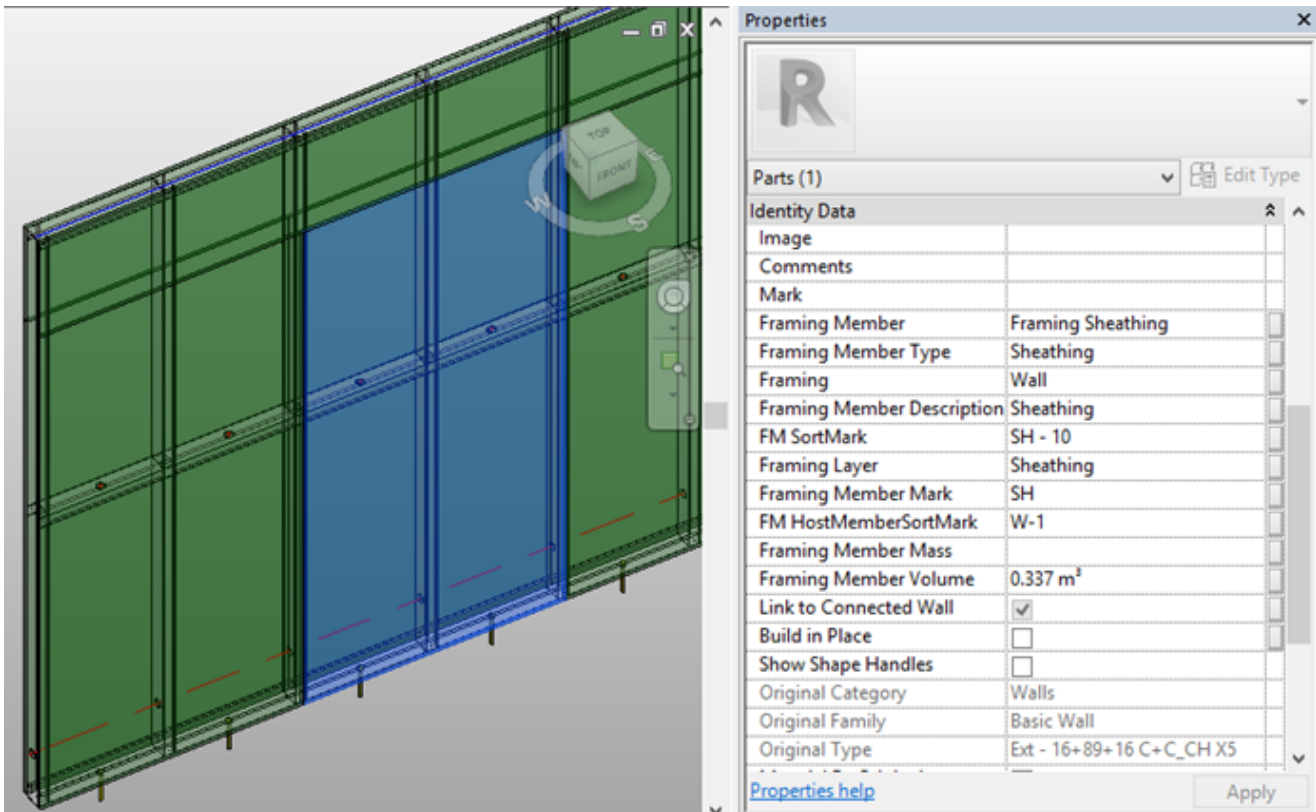
ticked



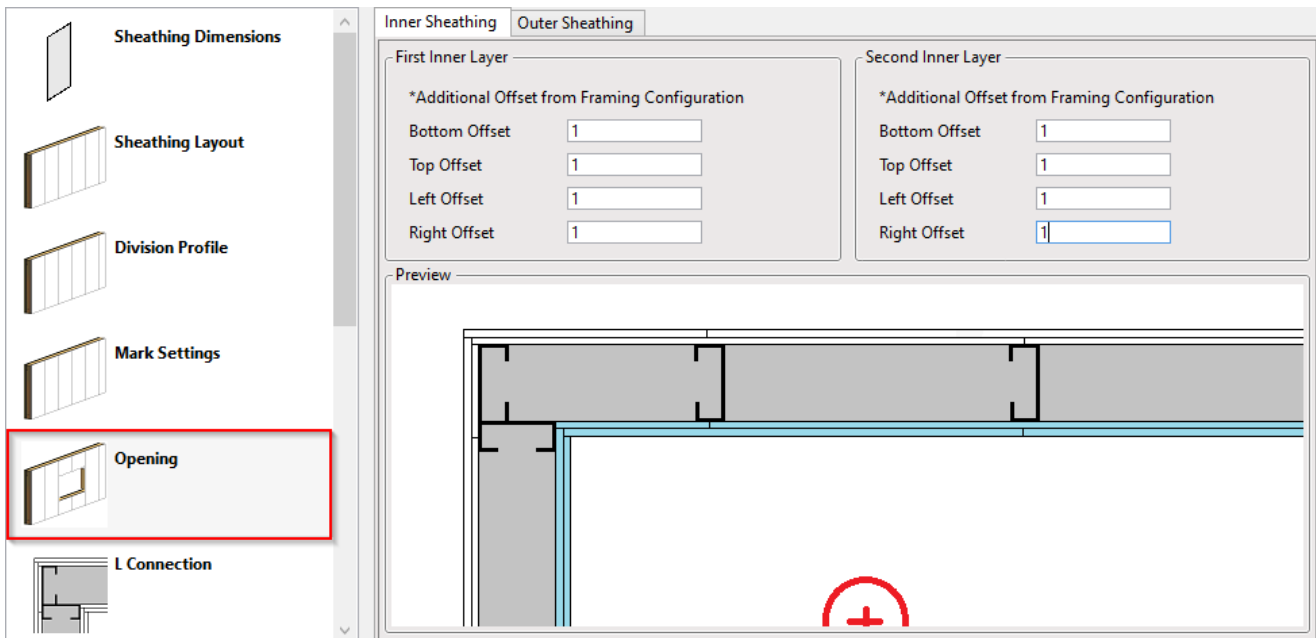
Mark Settings



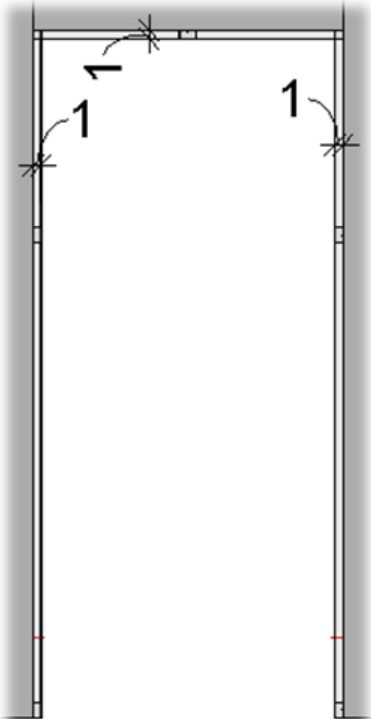
Mark Settings – predefine default values for these parameters for later use in schedules and tags.



Opening



Opening – predefine top, bottom, left, and right sheathing offsets from a window, door, or other opening.

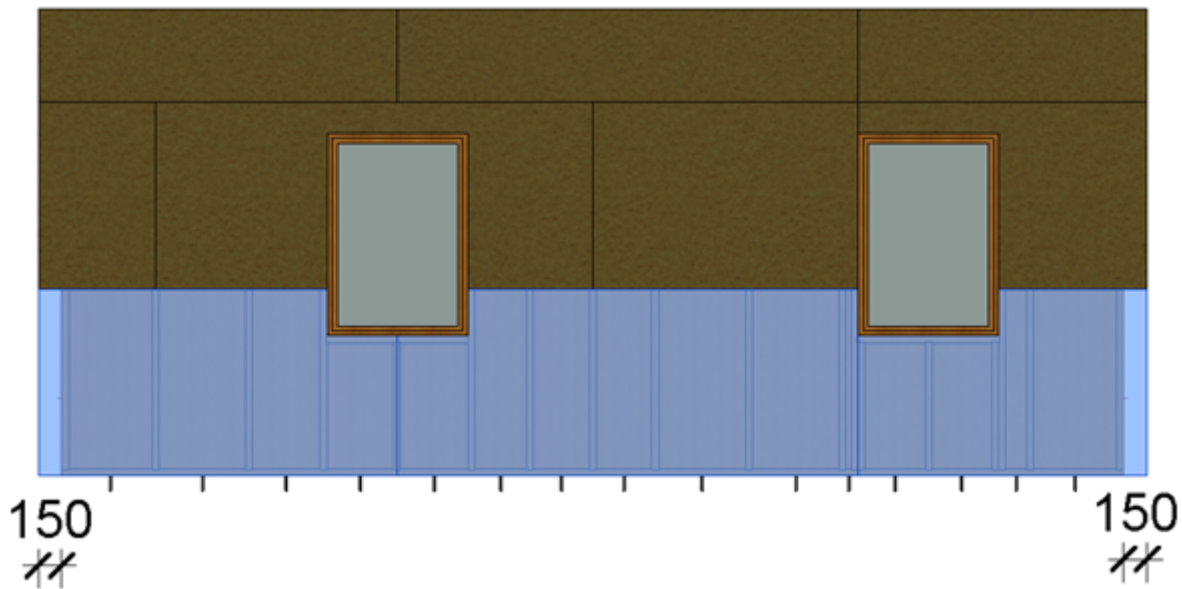


L Connection, V Connection, End Connection, T Connection

L Connection, V Connection, End Connection, T Connection – predefine sheathing settings for different wall connections.

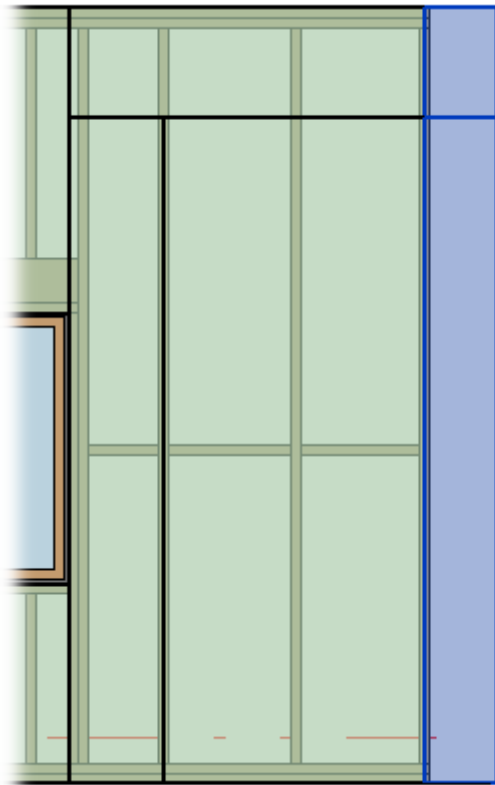
Layer Extension – distance from a wall face.

*Example: For the free end connection, **Layer Extension** = 150:*



Split at Stud – define the number of studs where the sheathing must be split.

Example: Split at Stud = 1:



Build in Place – writes Yes/No information into the sheathing instance parameter if it is build-in-place or is prefabricated with the whole wall frame. This parameter can later be used in schedules or view filters.

Properties

Parts (1) Edit Type

Constraints

Base Level Level 2

Construction

Link to Connected Wall

Framing Configuration

Build in Place

Part Detail Configuration

Assembly Mass

Element Mass

Assembly Created-Updated

Details Created-Updated

DC

Dimensions

Volume	0.012 m ³
Area	0.968 m ²
Length	322.5
Height	3000.0
Thickness	12.0

Excluded – removes the sheathing (part) from the model. Excluded sheathings are only visible when under the cursor and will not be included in schedules.

Properties

Parts (1) Edit Type

Constraints

Base Level Level 2

Construction

Link to Connected Wall

Framing Configuration

Build in Place

Part Detail Configuration

Assembly Mass

Element Mass

Assembly Created-Updated

Details Created-Updated

DC

Dimensions

Volume	0.012 m ³
Area	0.968 m ²
Length	322.5
Height	3000.0
Thickness	12.0

Excluded

Shape is modified

Identity Data

