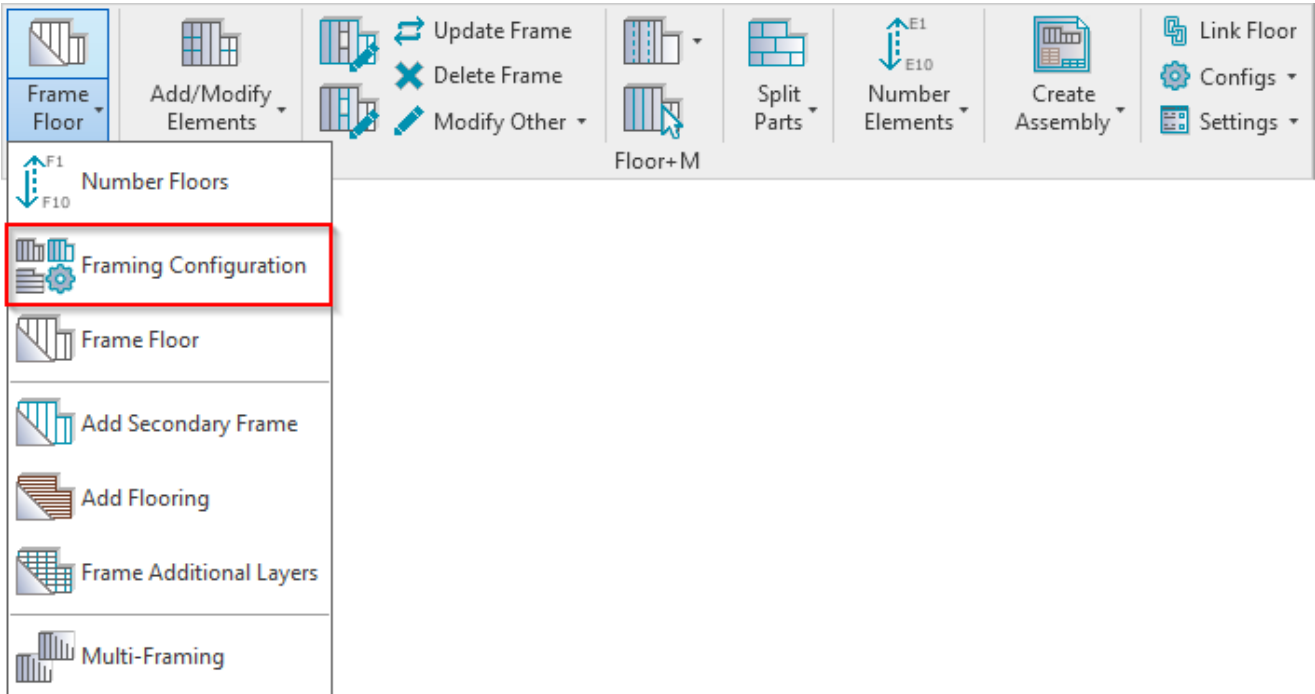


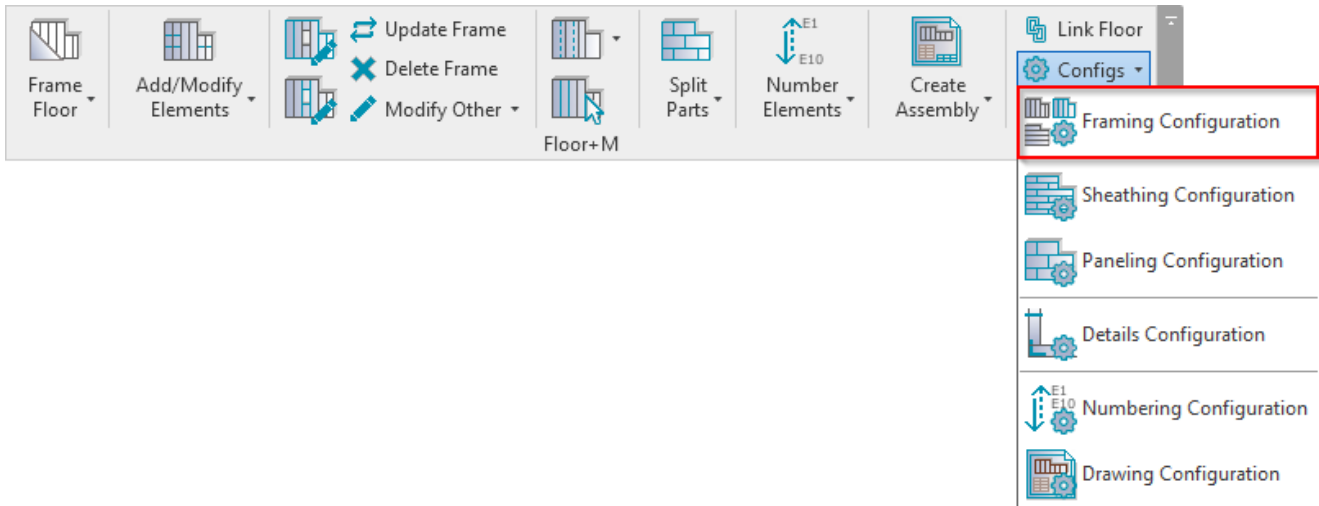
# FRAMING CONFIGURATION – Configurations

Modified on: Tue, 2 Feb, 2021 at 7:26 PM

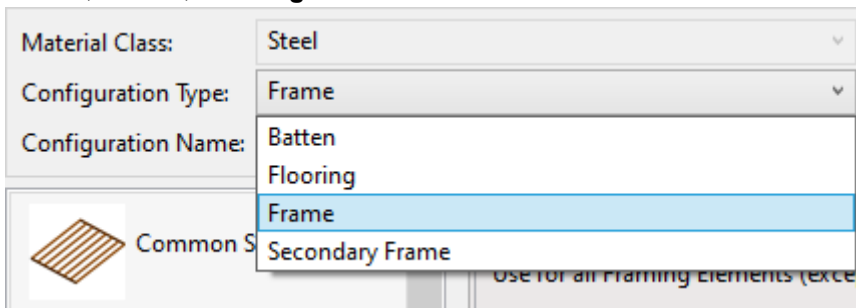
**Framing Configuration** may be found in two locations:



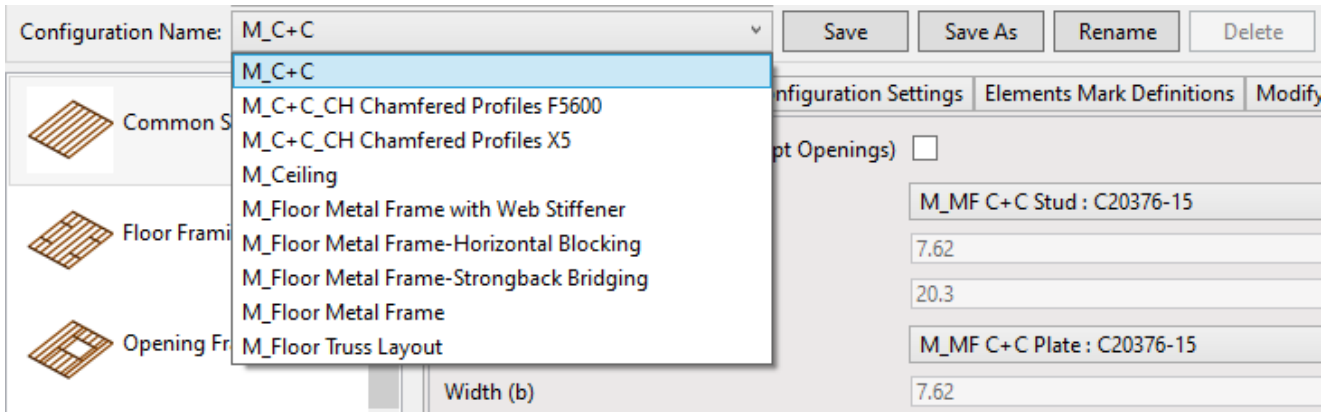
OR:



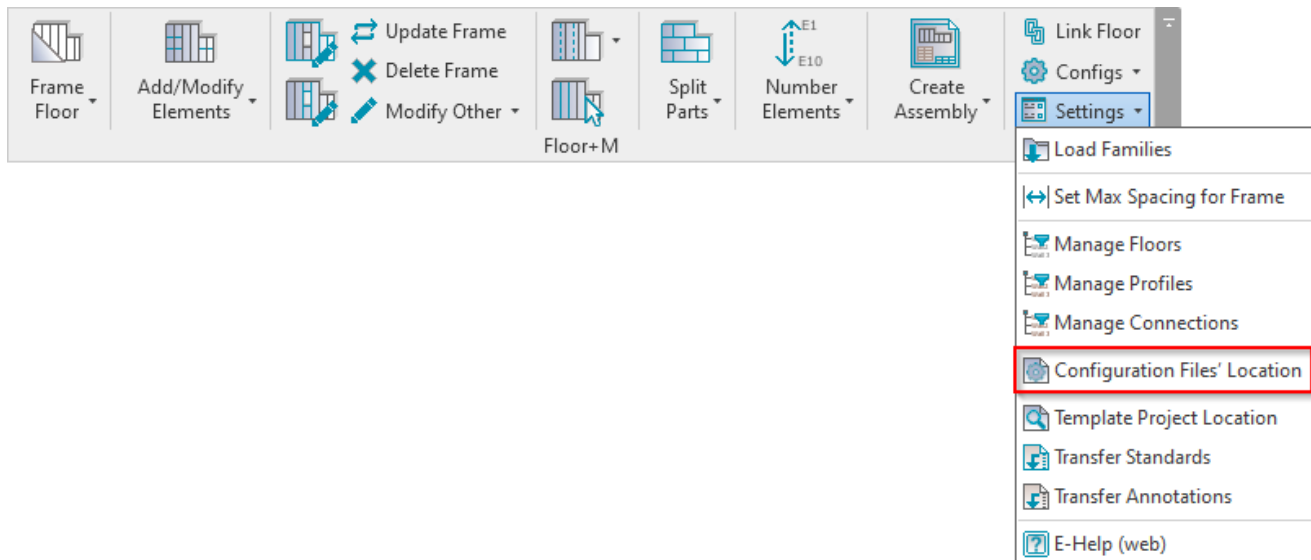
**Configuration Type** – choose the type of framing you want to configure. The possible options are: **Frame, Secondary Frame, Batten, Flooring**:

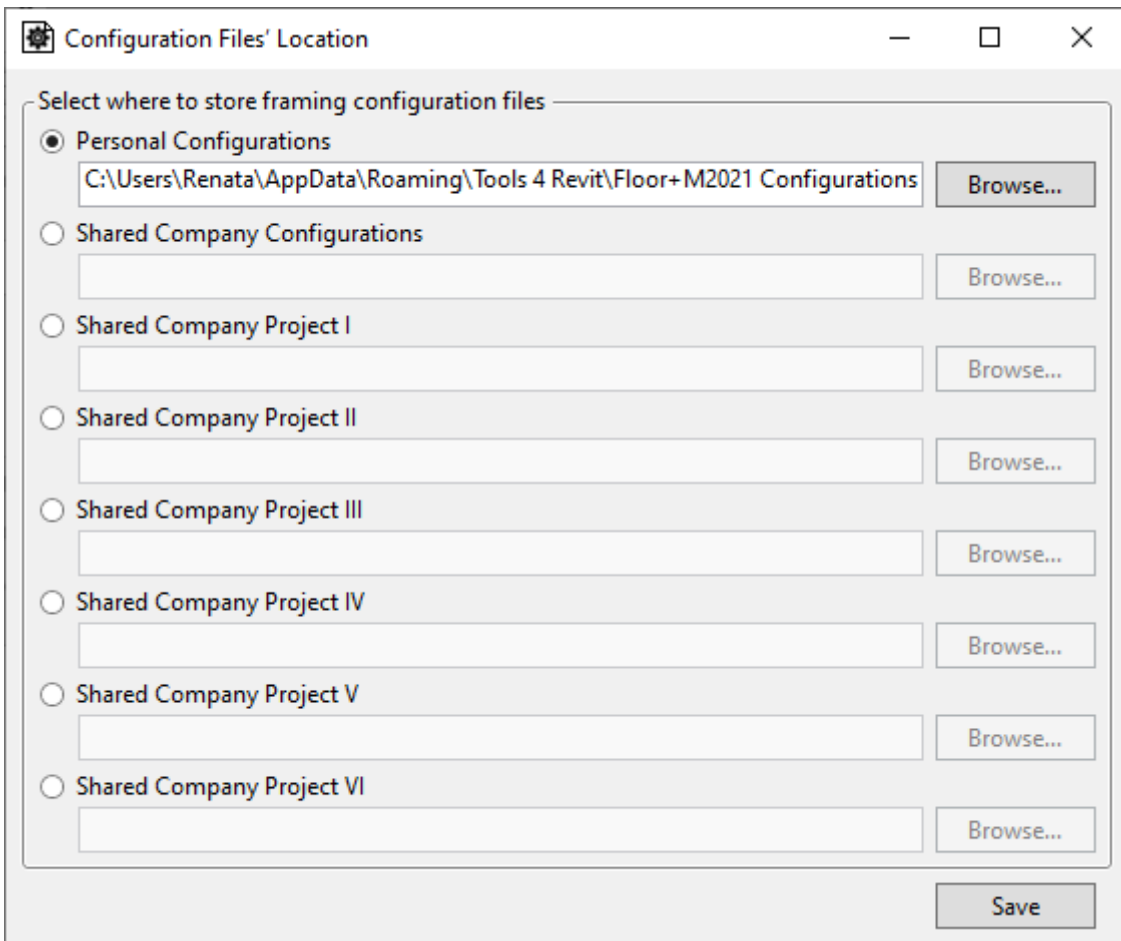


**Configuration Name** – configuration with all framing settings. You can use the sample configurations or create new ones. Also, you can rename or delete the existing configurations.



By default, **Floor+M** framing configurations are saved in *C:\Users\user name\AppData\Roaming\Tools 4 Revit\Floor+M2020 (or other version) Configurations\Framing Configurations\Imperial or Metric* catalog. The content from this catalog can be copied to other users' computers if needed. Also, the path can be changed in **Floor+M** → **Settings** → **Configuration Files' Location**.





C:\Users\Renata\AppData\Roaming\Tools 4 Revit\Floor+M2021 Configurations		
Name	Date modified	Type
CustomFramingJoins	2021-01-03 20:16	File folder
Framing Configurations	2021-01-03 19:51	File folder
Mark Configurations	2021-01-03 20:16	File folder
Part Configurations	2021-01-03 19:51	File folder
Sheathing Configurations	2021-01-03 19:51	File folder
Tool Settings	2021-01-03 20:16	File folder
Workshop Configurations	2021-01-03 20:16	File folder

One framing configuration contains a folder and an XML file under the same name:

Material Class:	Steel
Configuration Type:	Frame
Configuration Name:	M_C+C

C:\Users\Renata\AppData\Roaming\Tools 4 Revit\Floor+M2020 Configurations\Framing Configurations\Metric

Name	Date modified	Type	Size
M_C+C	2019-07-25 17:01	File folder	
M_C+C_CH Chamfered Profiles F5600	2019-07-25 17:01	File folder	
M_C+C_CH Chamfered Profiles X5	2019-07-25 17:01	File folder	
M_Ceiling	2019-07-25 17:01	File folder	
M_Floor Batten	2019-07-25 17:01	File folder	
M_Floor Flooring	2019-07-25 17:01	File folder	
M_Floor Metal Frame	2019-07-25 17:01	File folder	
M_Floor Metal Frame with Web Stiffener	2019-07-25 17:01	File folder	
M_Floor Metal Frame-Horizontal Blocking	2019-07-25 17:01	File folder	
M_Floor Metal Frame-Strongback Bridging	2019-07-25 17:01	File folder	
M_Floor Secondary Frame	2019-07-25 17:01	File folder	
M_Floor Truss Layout	2019-07-25 17:01	File folder	
DefaultConfig	2019-09-08 18:26	XML Document	1 KB
M_C+C	2018-02-12 18:17	XML Document	187 KB
M_C+C_CH Chamfered Profiles F5600	2018-02-12 17:44	XML Document	188 KB
M_C+C_CH Chamfered Profiles X5	2018-02-12 18:18	XML Document	189 KB
M_Ceiling	2018-02-12 17:46	XML Document	188 KB
M_Floor Batten	2018-02-12 17:58	XML Document	187 KB