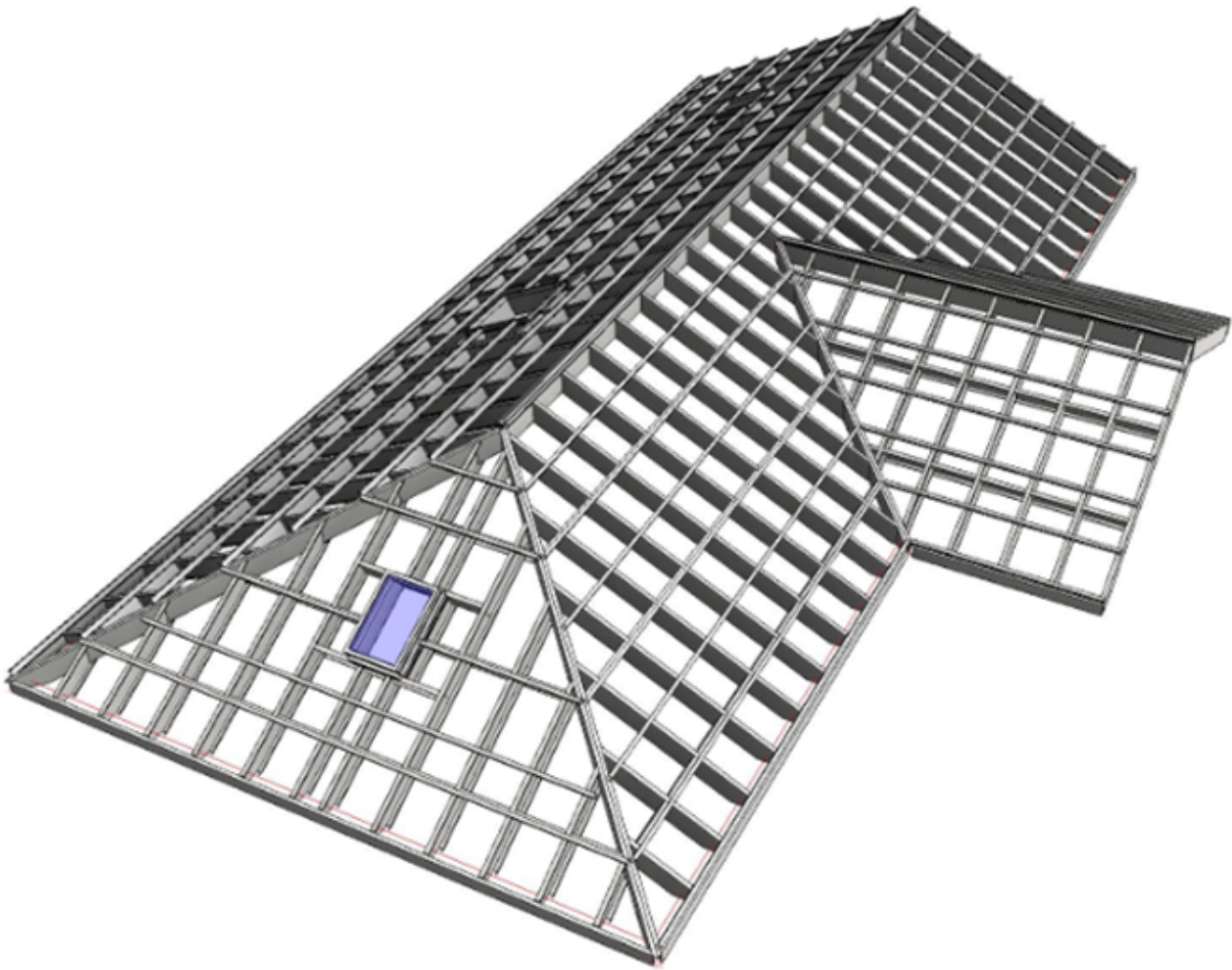


# INTRODUCTION

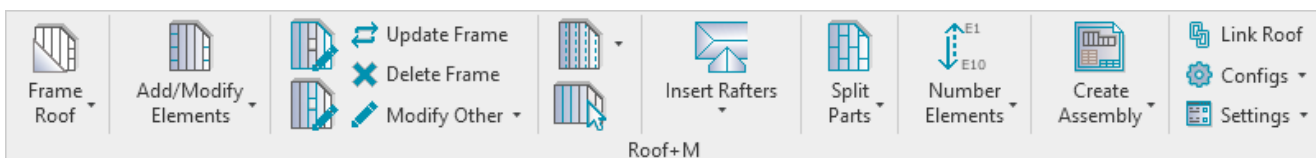
Modified on: Sat, 14 Sep, 2019 at 4:58 PM

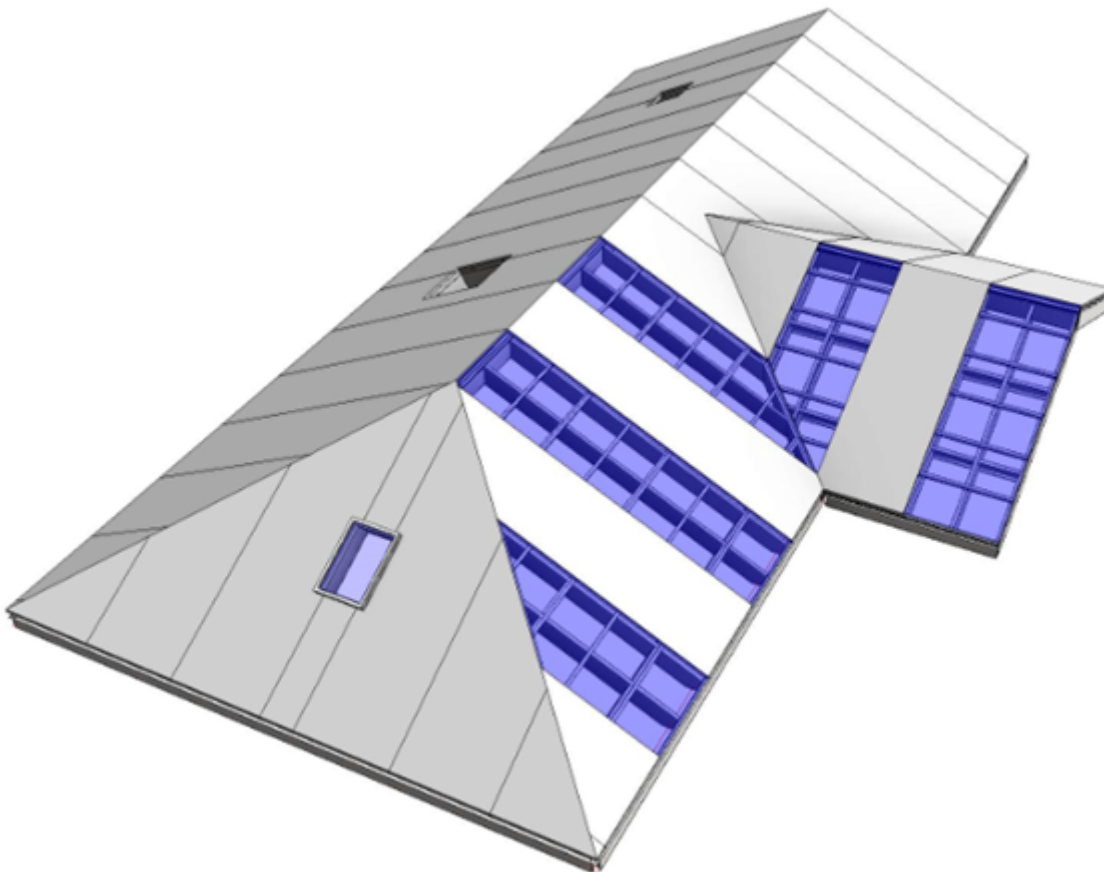
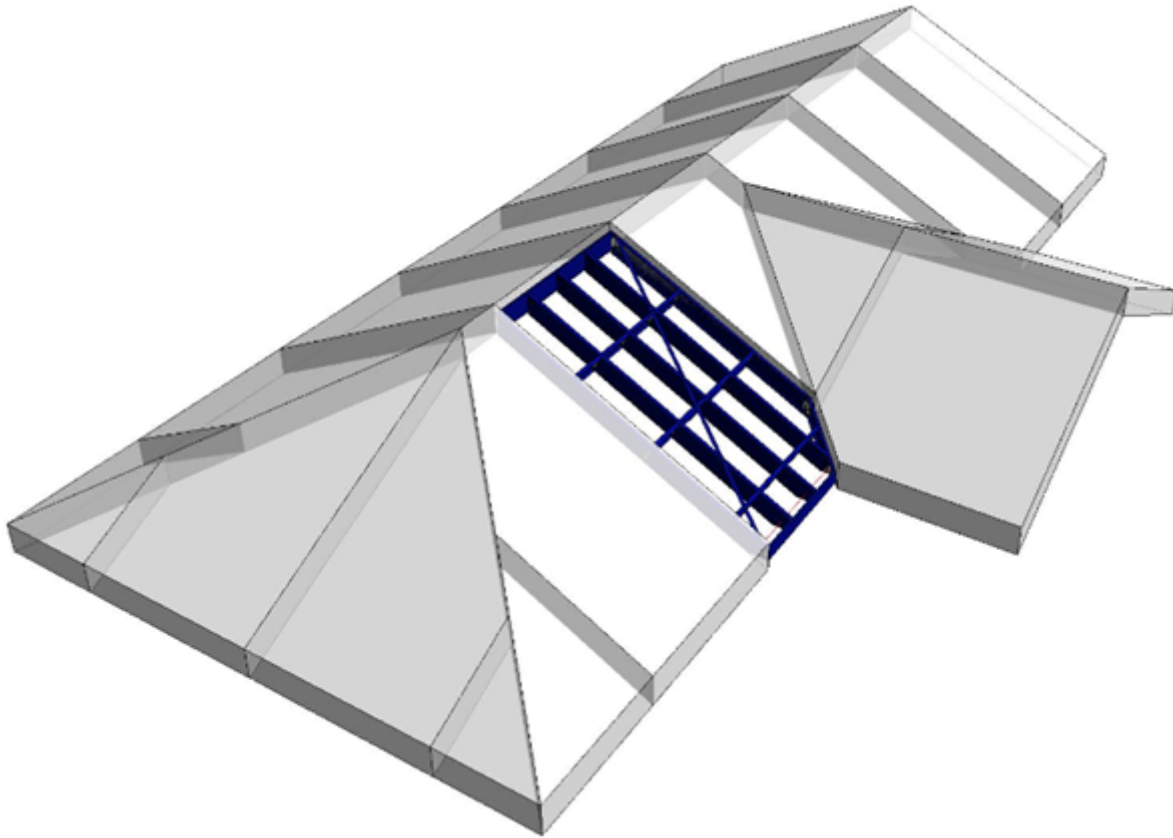
**Metal Framing Roof+** application for Autodesk® Revit®

- 1....allows you to quickly pre-define your roof framing configuration and frame roofs in just a few easy steps;
- 2....is an all-in-one solution with different types of framing, from prefabricated panels to common rafters;
- 3....lets you edit framing manually or automatically;
- 4....lets you design framing with thousands of possible configurations;
- 5....prepares shop drawings in just a few clicks;
- 6....**saves vast amounts of time.**



**Metal Framing Roof+** lets you quickly create full rafter systems in Revit® models for metal frame roofs of any shape or complexity. Custom-framing functions and versatile schedule generation further accelerate BIM workflow. No more drafting – just design and decide.





## Recommended workflow

1. Build a model using Revit **Roof** functionality
2. Create roof types with layers → assign materials
3. Split roofs into prefabricated segments using **Roof Panel Layout** (<http://www.aga-cad.com/products/bim-solutions/roof-panel-layout>).

4. **Roof+M** → **Settings** → **Load Families**
5. **Roof+M** → **Configs** → define **Framing Configuration**
6. **Roof+M** → map roof types with framing configuration using **Link Roof**
7. **Roof+M** → frame roof panels
8. **Roof+M** → **Number Elements** → number roofs using **Number Roofs**
9. **Roof+M** → number framing elements using **Number Elements**
10. **Roof+M** → **Configs** → define **Drawing Configuration**
11. **Roof+M** → make shop drawings for one roof using **Create Assembly**
12. Add shop drawing views into the sheet for one roof and save it as a template for future roof segments
13. **Roof+M** → make shop drawings for other roof segments

## Best practices for making roofs in Revit

Roof structure should be layered out the way the parts of the framing will be modeled, e.g.

1. Roofing
2. Battens
3. Main Frame

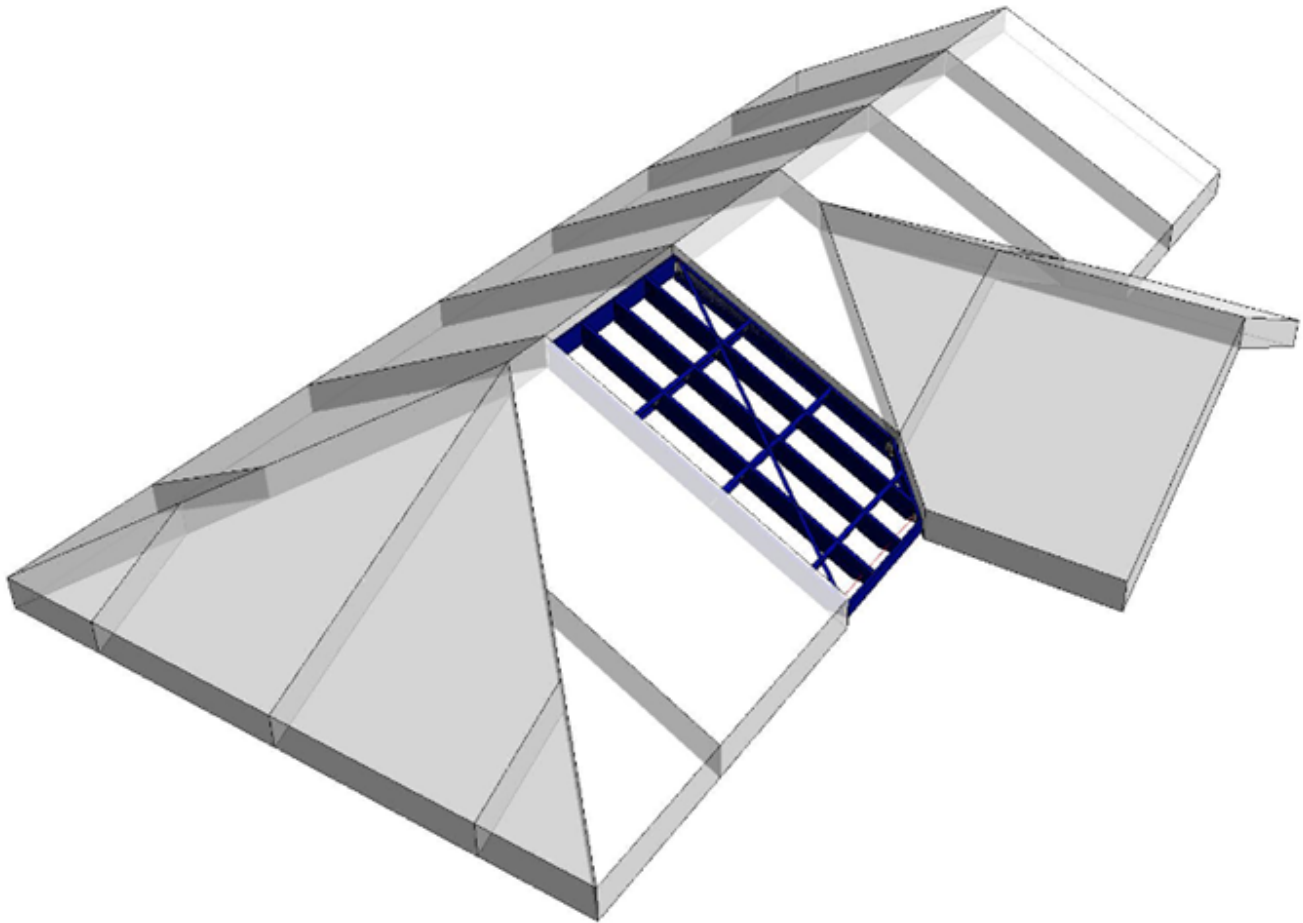
Layers					
	Function	Material	Thickness	Wraps	Variable
1	Finish 2 [5]	Metal Deck	1.500	<input type="checkbox"/>	<input type="checkbox"/>
2	Finish 1 [4]	Metal Panel	2.500	<input type="checkbox"/>	<input type="checkbox"/>
3	<b>Core Boundary</b>	<b>Layers Above Wrap</b>	<b>0.000</b>		
4	Structure [1]	Metal Stud Layer	10.000	<input type="checkbox"/>	<input type="checkbox"/>
5	<b>Core Boundary</b>	<b>Layers Below Wrap</b>	<b>0.000</b>		

Materials for every layer are mandatory.

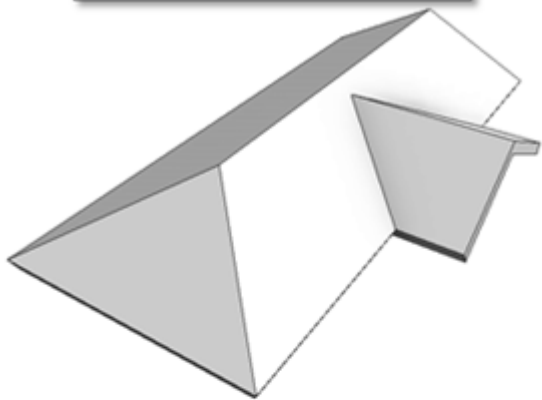
Roof splitting:

- **Roof+M** is capable of making frames for both: on-site and modular roof framing. Splitting defines the modules of roof.
- To define panels of framing you should use **Roof** (<http://www.aga-cad.com/products/bim-solutions/roof-panel-layout>) **Panel Layout** (<http://www.aga-cad.com/products/bim-solutions/roof-panel-layout>).

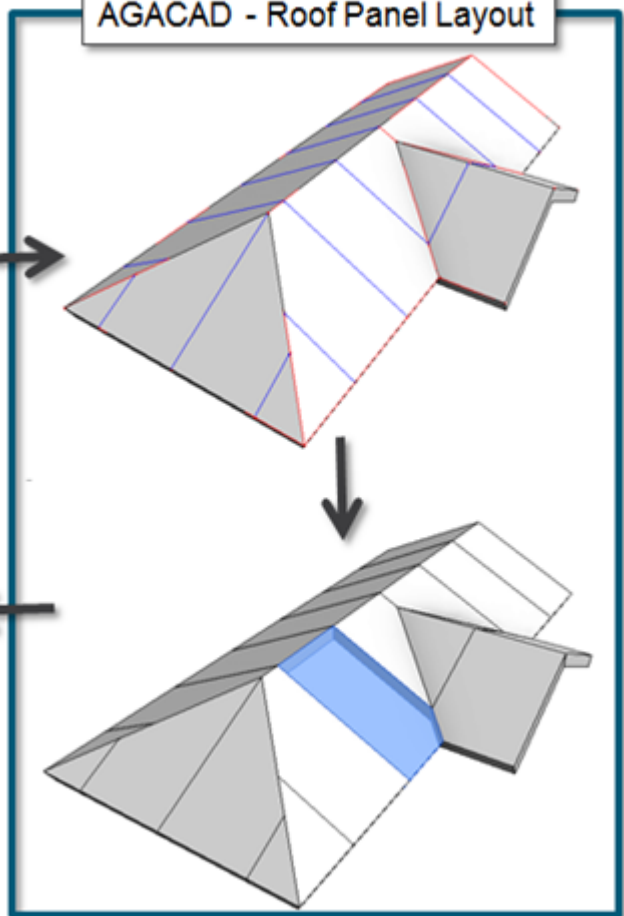
**Roof Panel Layout** is a powerful solution for prefabricated roof panels in Revit®. It enables easy roof panel planning and splitting into segments for prefabrication, which can then be used in the roof framing process.



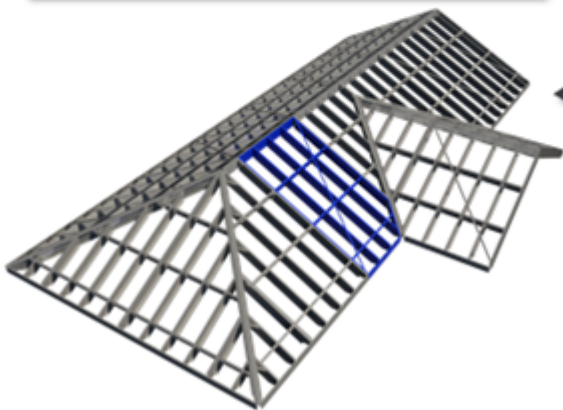
Roof created by architect



AGACAD - Roof Panel Layout



AGACAD - Metal Framing Roof+



### Main framing elements

