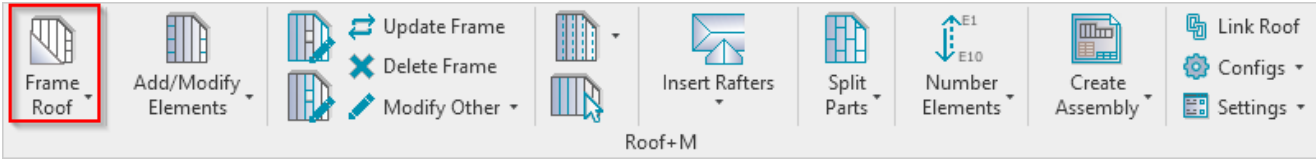


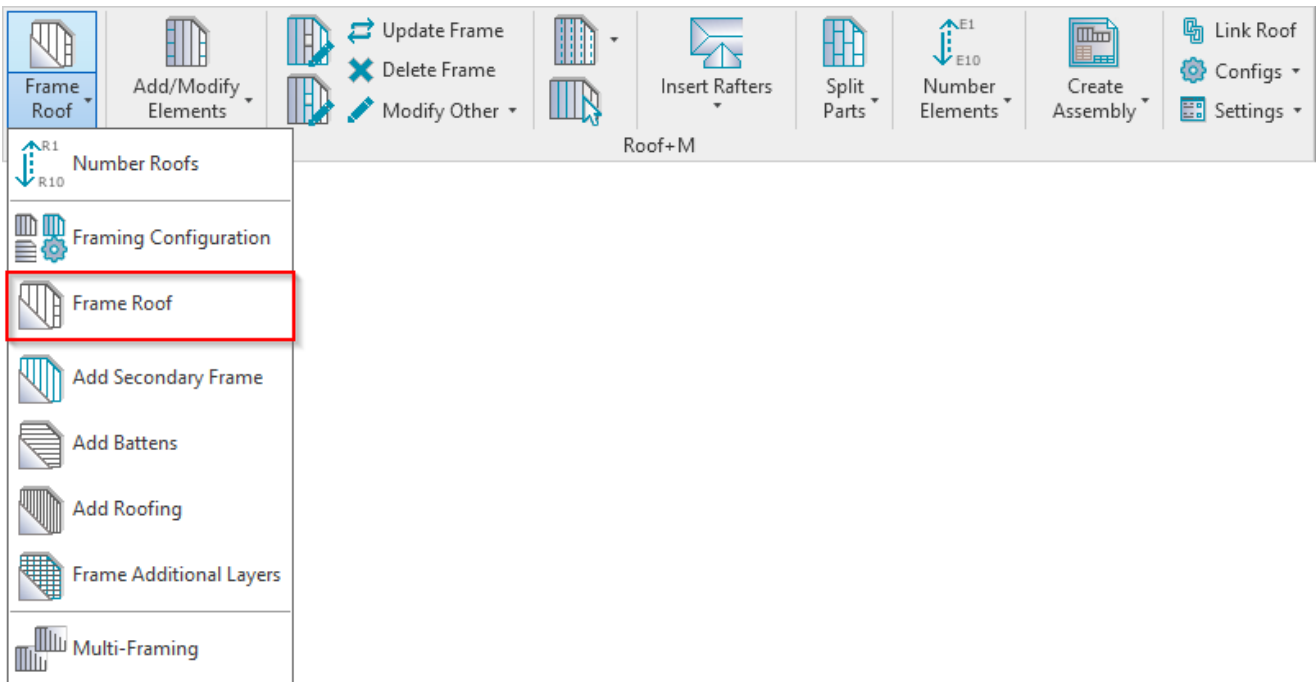
# FRAME ROOF – ADD MAIN FRAME

Modified on: Sat, 9 Jan, 2021 at 7:09 PM

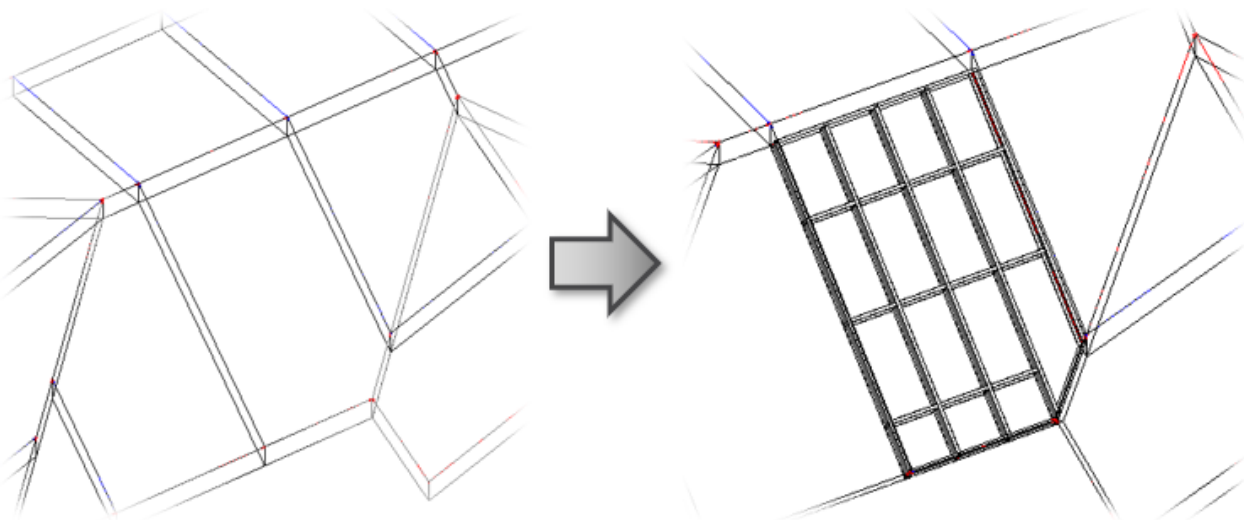
## Frame Roof



Or:

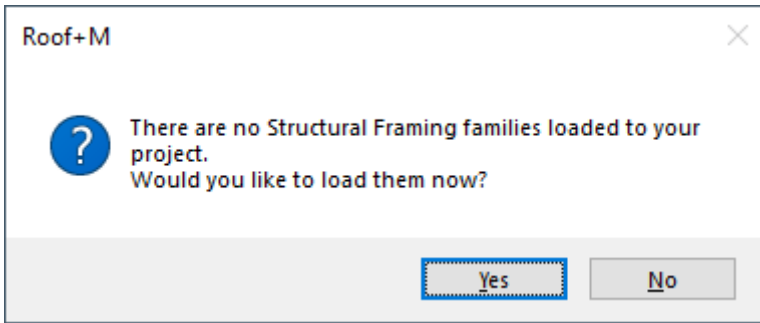


**Frame Roof** – frames selected roofs or parts from the model according to predefined configuration.

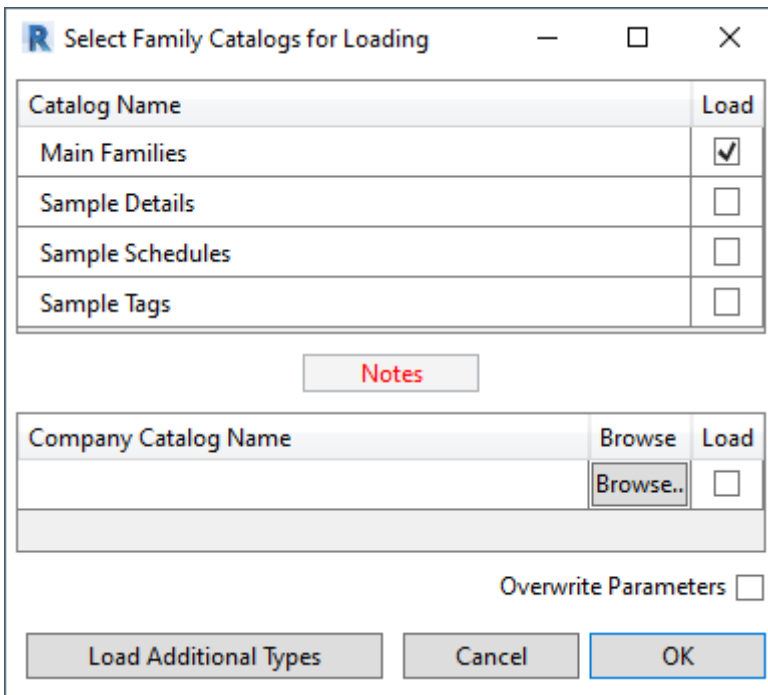


## First time in the project

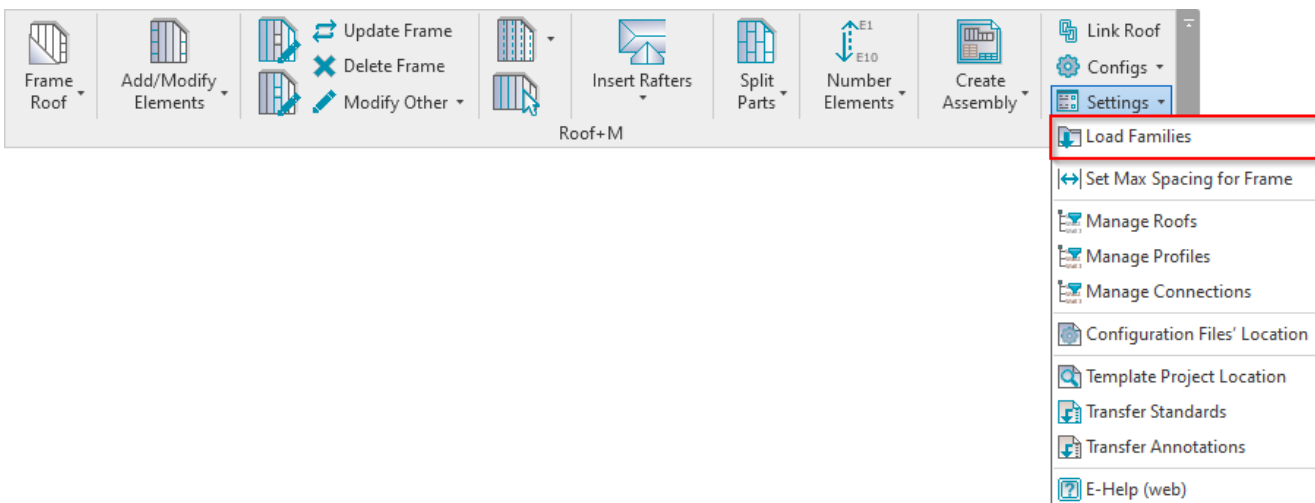
The first time you click **Frame Roof** in a new project, you will get a message that the framing families are not loaded. You can load them directly from here:



Just click OK:



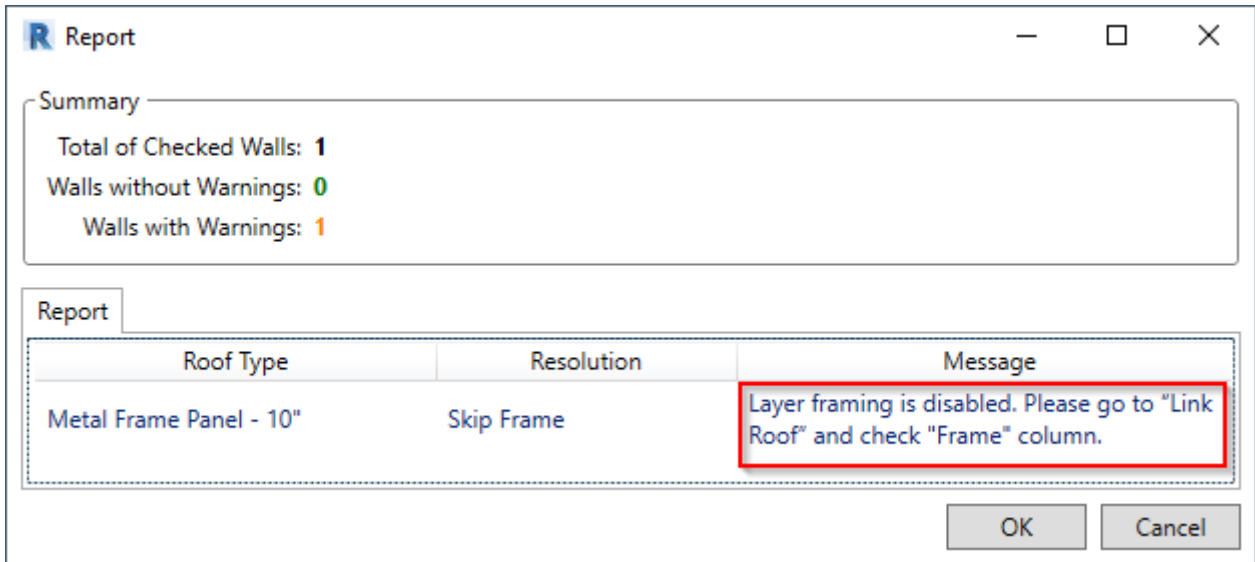
Framing families can be also loaded using **Roof+M** → **Settings** → **Load Families**:



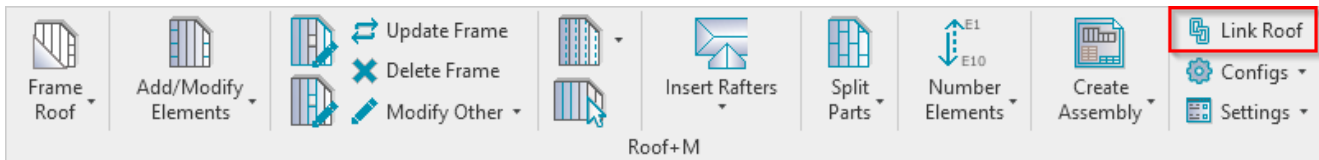
**[Read more Load Families>>](https://agacad.freshdesk.com/support/solutions/articles/44001798129-load-families)** (<https://agacad.freshdesk.com/support/solutions/articles/44001798129-load-families>).

**Roof+M** checks the status of selected roofs. If there is something wrong with the roofs, you will get a detailed report. In the image below, you can see possible report messages.

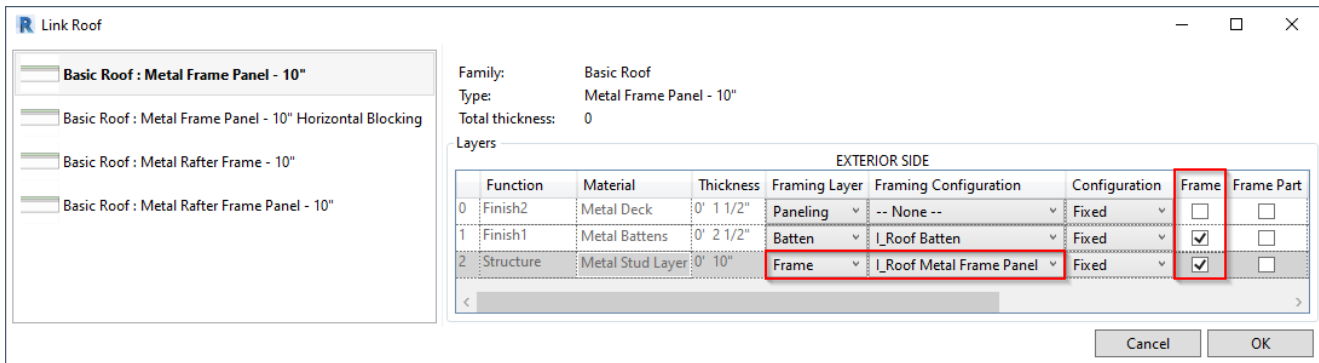
Let's solve the problem of the **Metal Frame Panel - 10"** roof type:



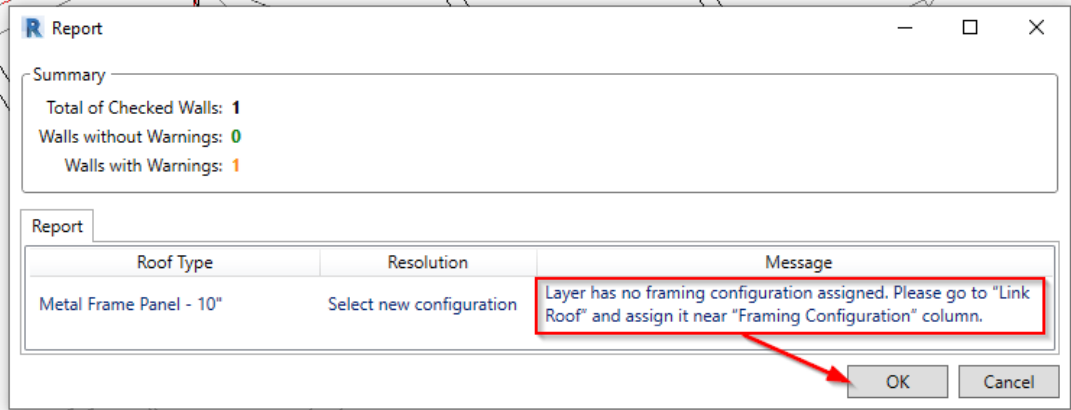
To fix these kinds of problems, you usually need to go to **Link Roof** and check the situation:



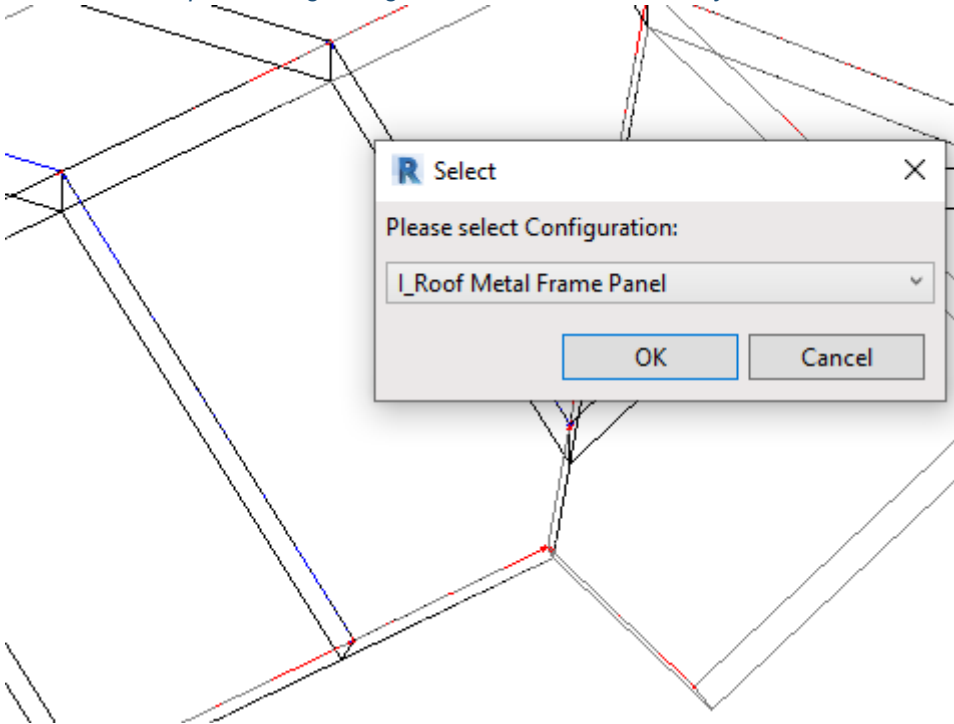
**Roof Framing Panels** has framing possibility disabled, so you just need to select the checkbox near the **Frame** column. You can also assign **Framing Layer** and **Framing Configuration** for every layer:



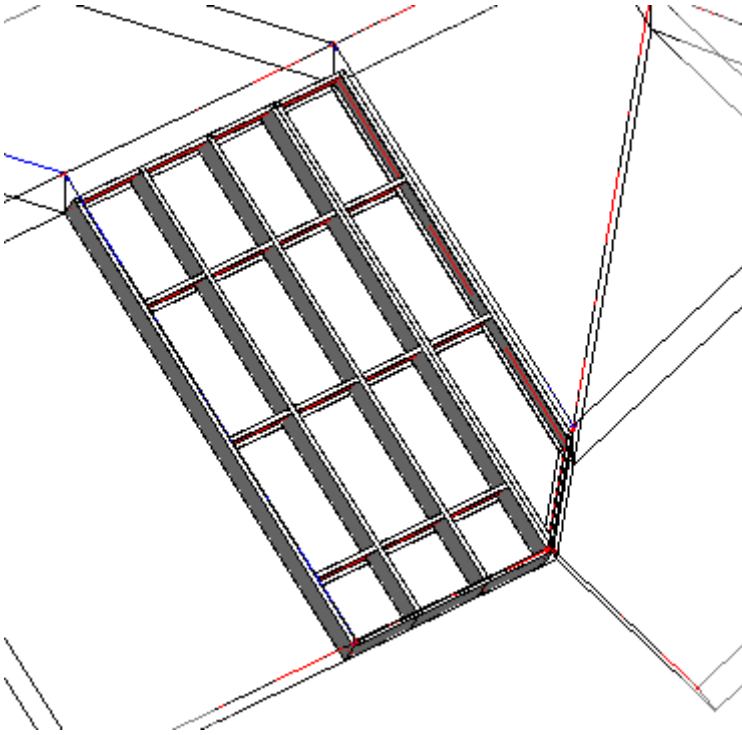
There is no problem if framing configuration is not assigned to the layer. You can assign it in the **Link Roof** dialog, or **Roof+M** will give you this option during the **Frame Roof** process:



*Selected a sample framing configuration, which automatically comes with **Roof+M**, and click OK:*



*Result:*



[Read more about Link Roof >>](https://agacad.freshdesk.com/support/solutions/articles/44001798130-link-roof) (<https://agacad.freshdesk.com/support/solutions/articles/44001798130-link-roof>)