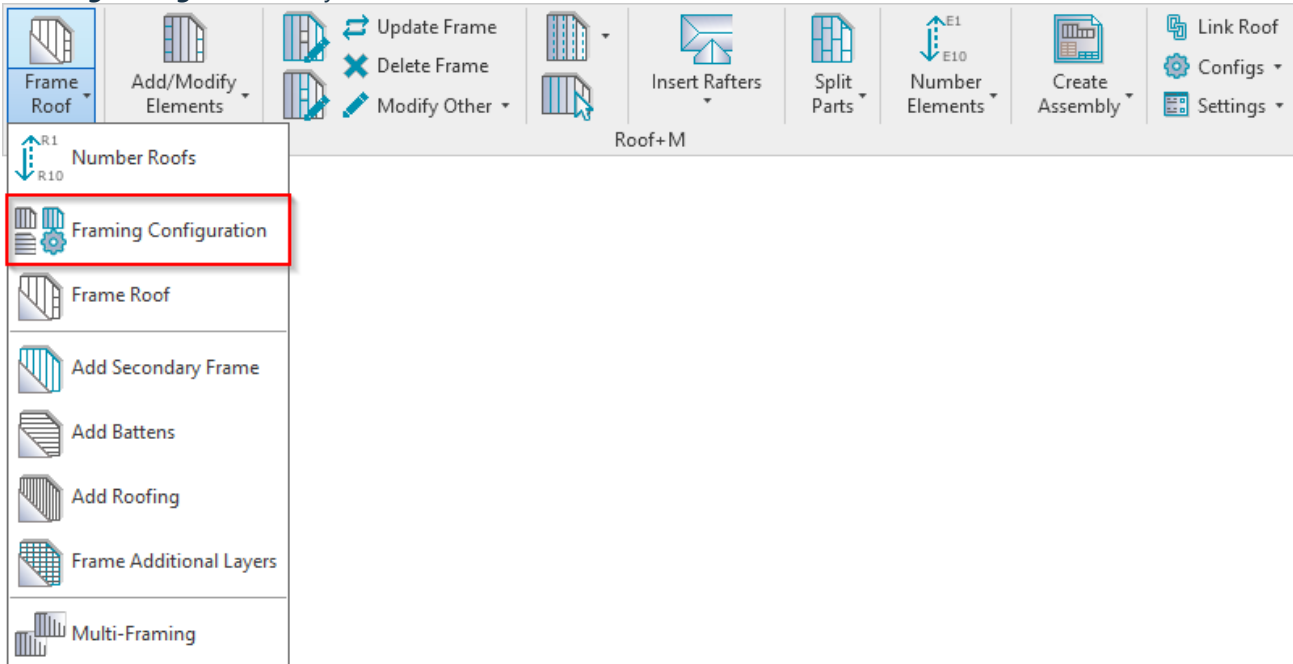


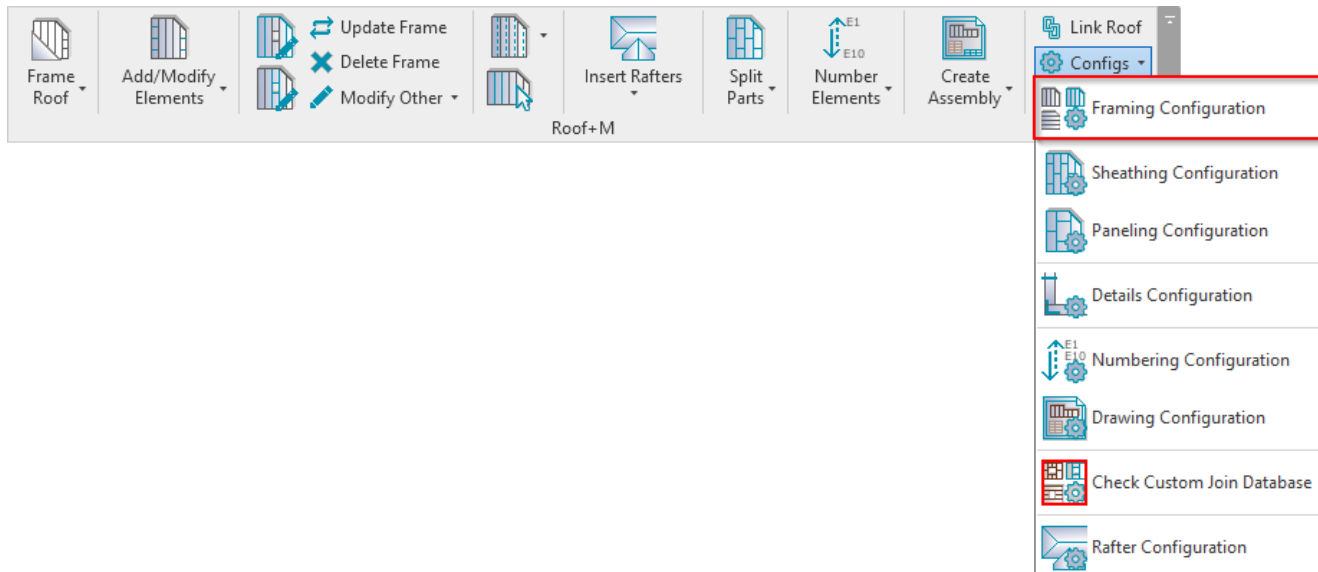
FRAMING CONFIGURATION – Horizontal Joist/Rafter/Bridging

Modified on: Mon, 11 Jan, 2021 at 8:38 PM

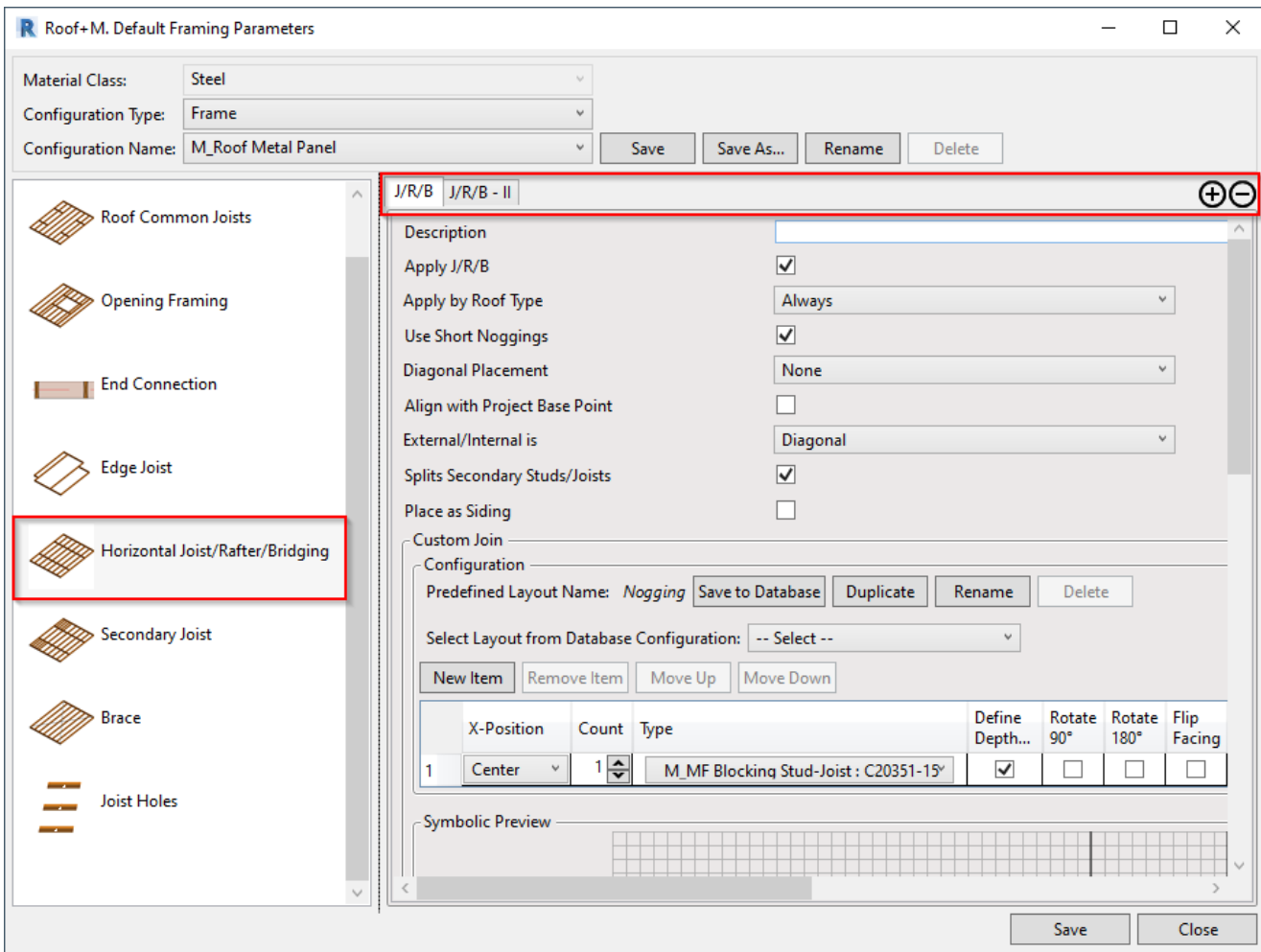
Framing Configuration may be found in two locations:



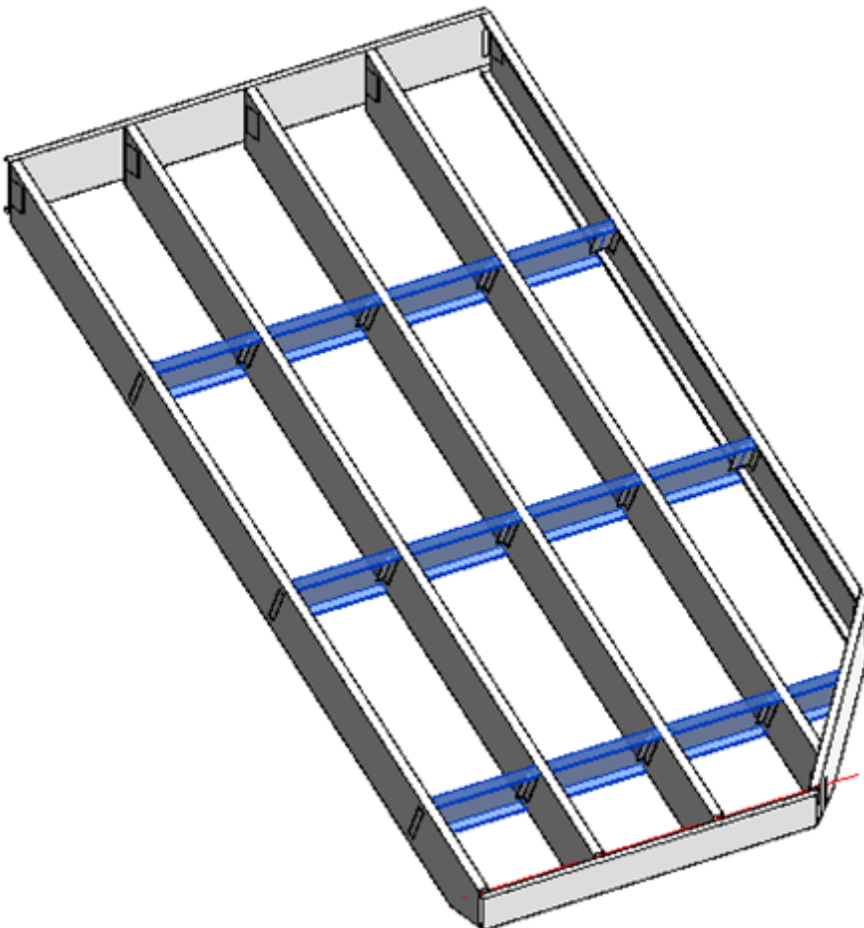
OR:



Horizontal Joist/Rafter/Bridging



You can add different types of continuous or non-continuous horizontal **Bridging**, **Rafter** or **Joist** into framing using different rules.



[Read more about every feature here >>](https://agacad.freshdesk.com/support/solutions/articles/44002140167-framing-configuration-%E2%80%93-blocking-nogging) (<https://agacad.freshdesk.com/support/solutions/articles/44002140167-framing-configuration-%E2%80%93-blocking-nogging>).