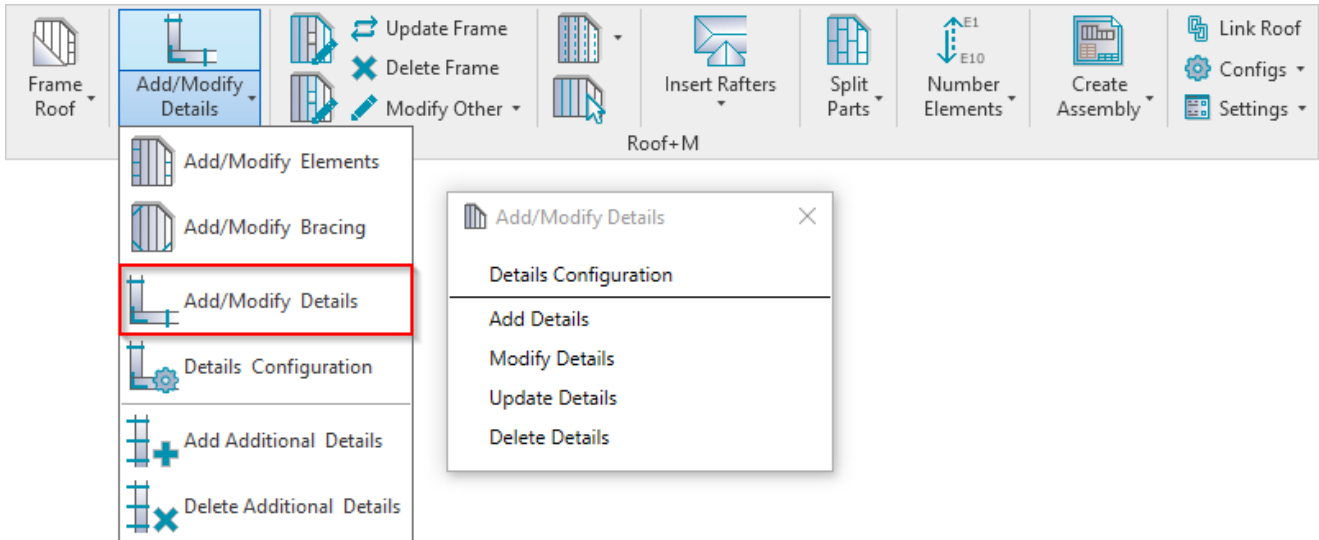


ADD/MODIFY DETAILS

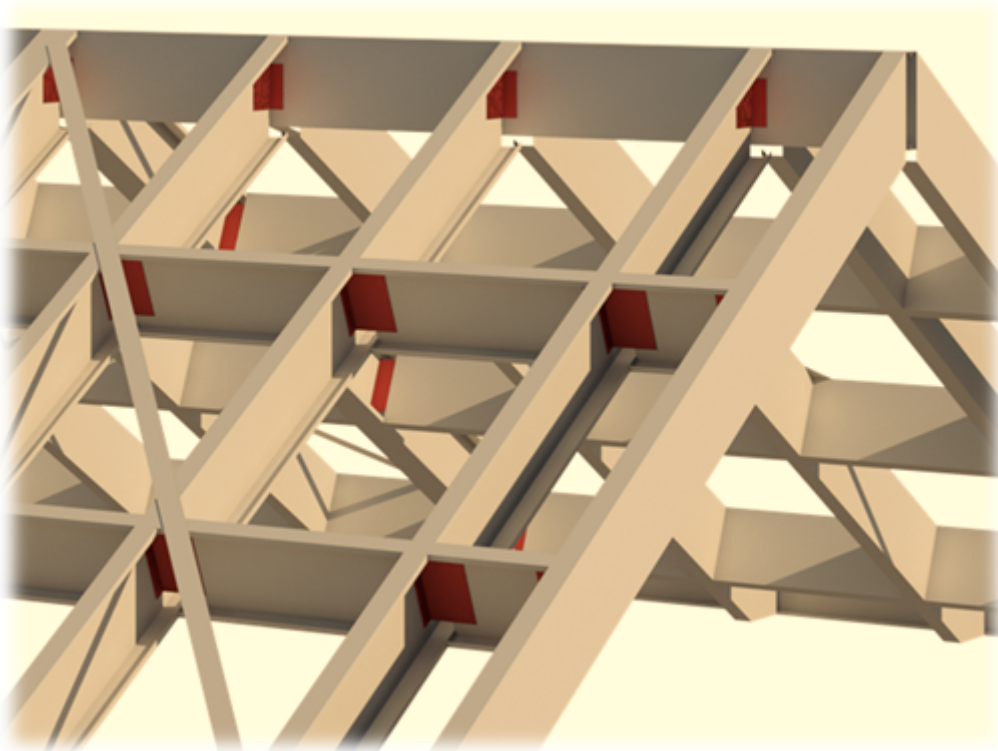
Modified on: Wed, 18 Sep, 2019 at 8:23 PM

Add/Modify Details

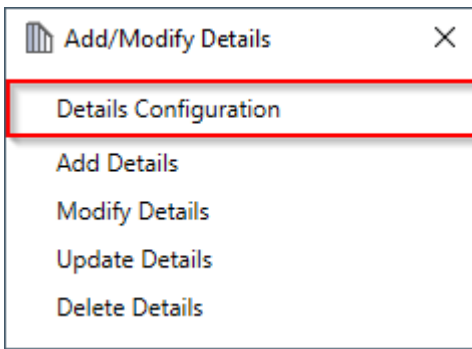


Add/Modify Details – for placing details in the frame. It is recommended to use these functions at the end of the framing process.

Recommended workflow: Create frame without details → Add additional elements → Split elements if needed → In the final step, add details. This will allow you to save time during the updating process when you frame a roof.



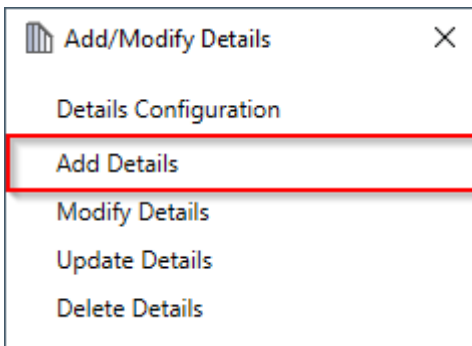
Details Configuration



Details Configuration – definition of all detail placing parameters.

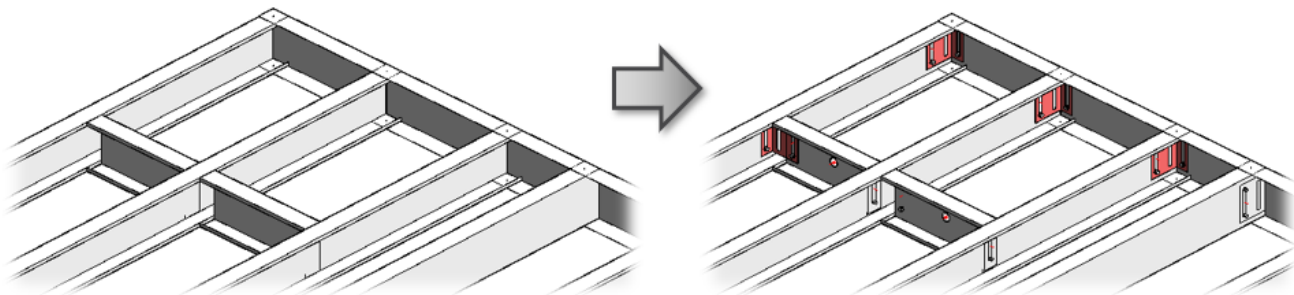
Read more >> (<https://agacad.freshdesk.com/support/solutions/articles/44001799959-add-modify-details-%E2%80%93-details-configuration>).

Add Details

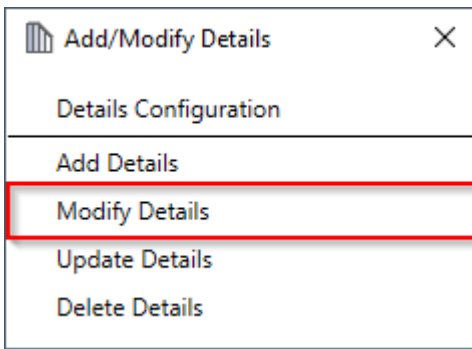


Add Details – adds details into selected roofs according to predefined configuration. Recommended to use this function at the end of the framing process.

Recommended workflow: Create frame without details → Add additional elements → Split elements if needed → In the final step, add details. This will save time during the updating process when you frame a roof.

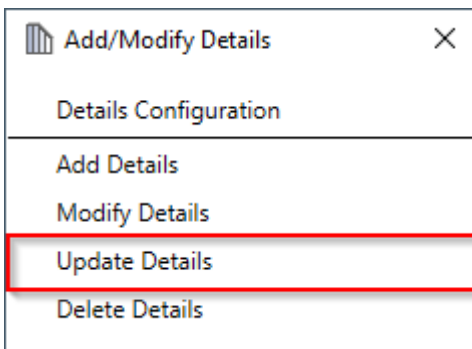


Modify Details

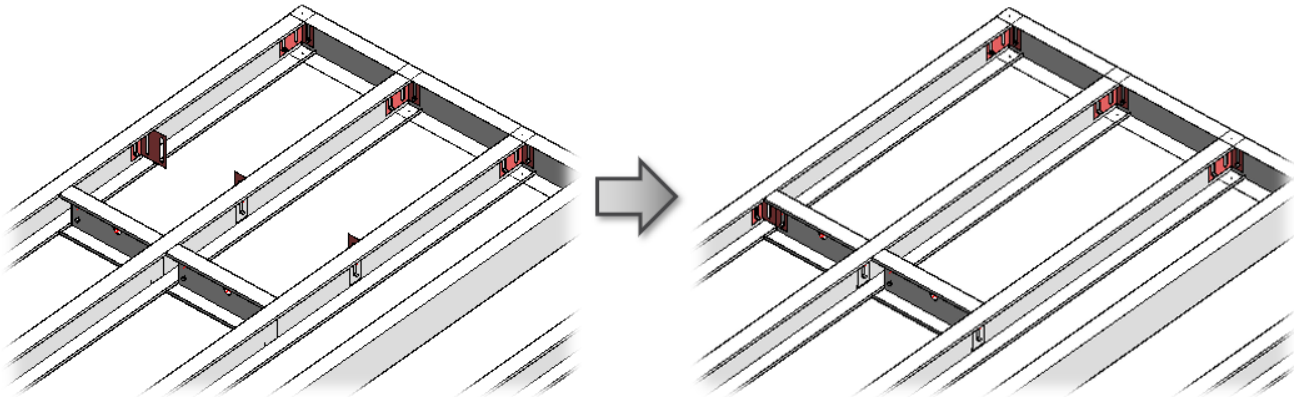


Modify Details – modifies selected roof details with custom settings if you need to make unique changes. All configuration settings are the same as in **Details Configuration**.

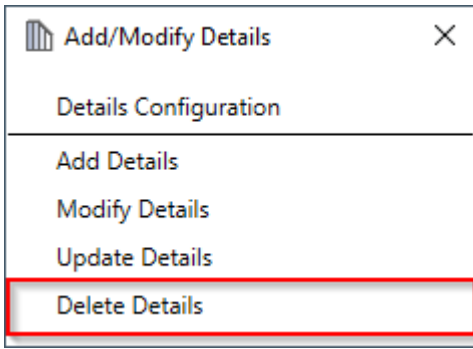
Update Details



Update Details – updates details if any changes were made to roof, e.g. opening was moved, roof was extended, etc.



Delete Details



Delete Details – deletes details from selected frame.

