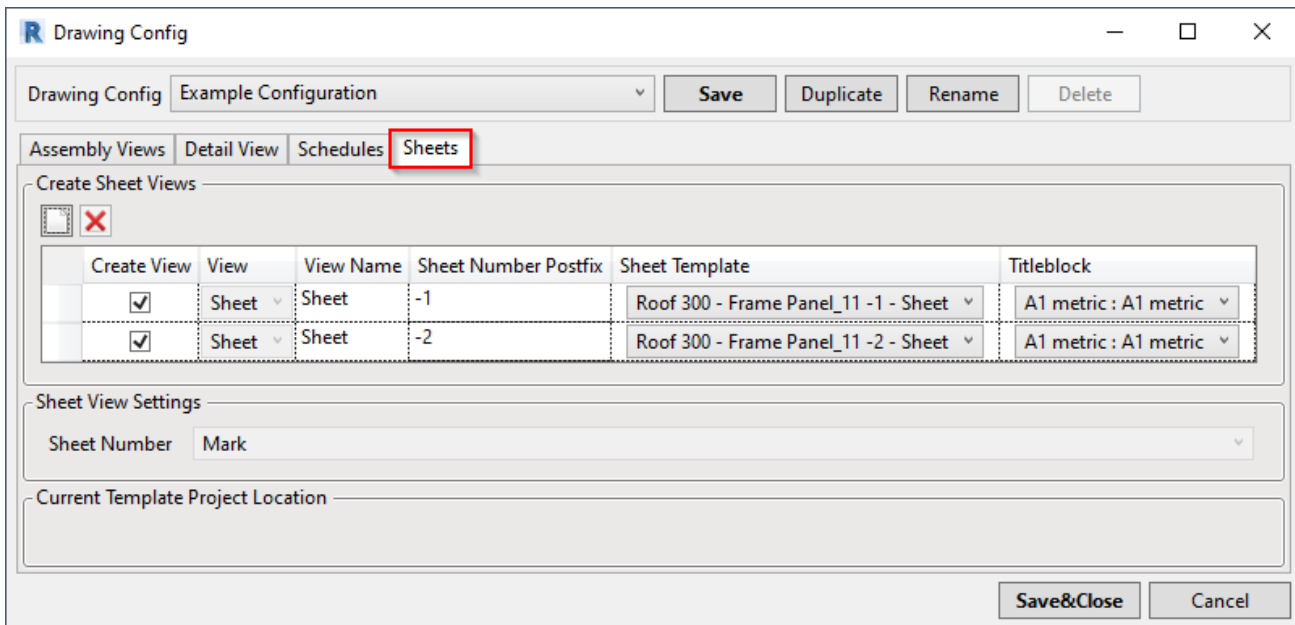
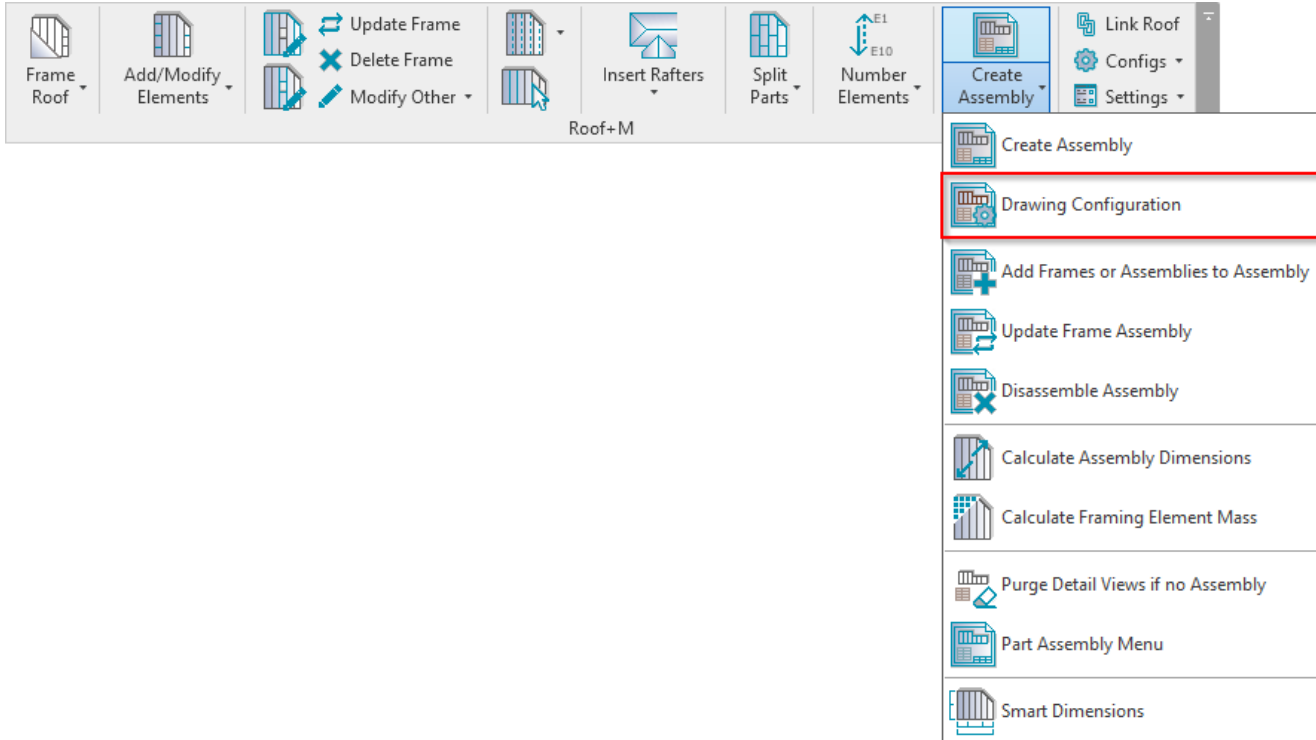


SHOP DRAWINGS – Drawing Configuration – Sheets

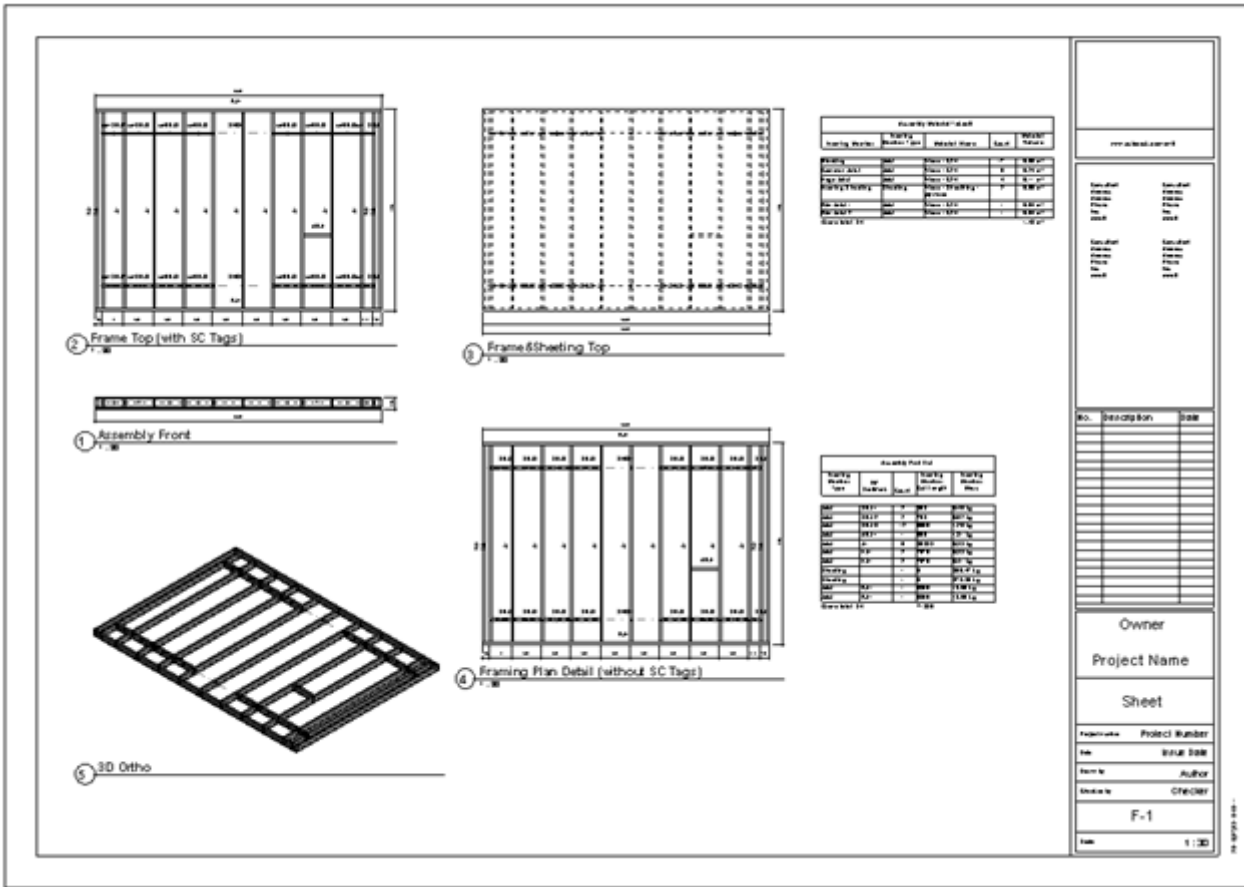
Modified on: Thu, 19 Sep, 2019 at 8:46 PM

Sheets

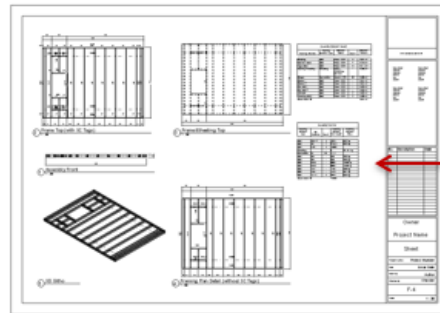
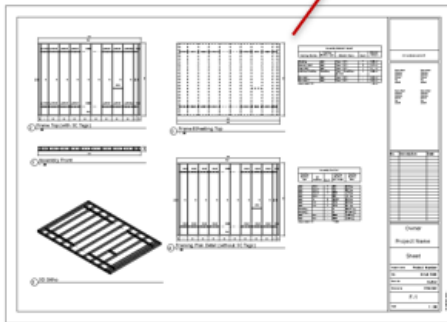
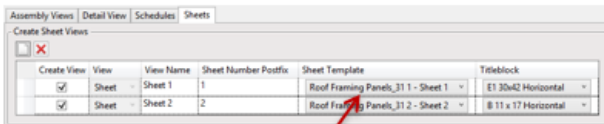


Roof+M creates sheets in the roof assembly using predefined settings.

Titleblock – select the titleblock family to apply to assemblies. The titleblock family list comes from your current project.



Create first assembly → add views to the sheet manually → open **Drawing Configuration** → **Sheets** → select a sheet to be a template for other roofs.



Newly created assembly sheet