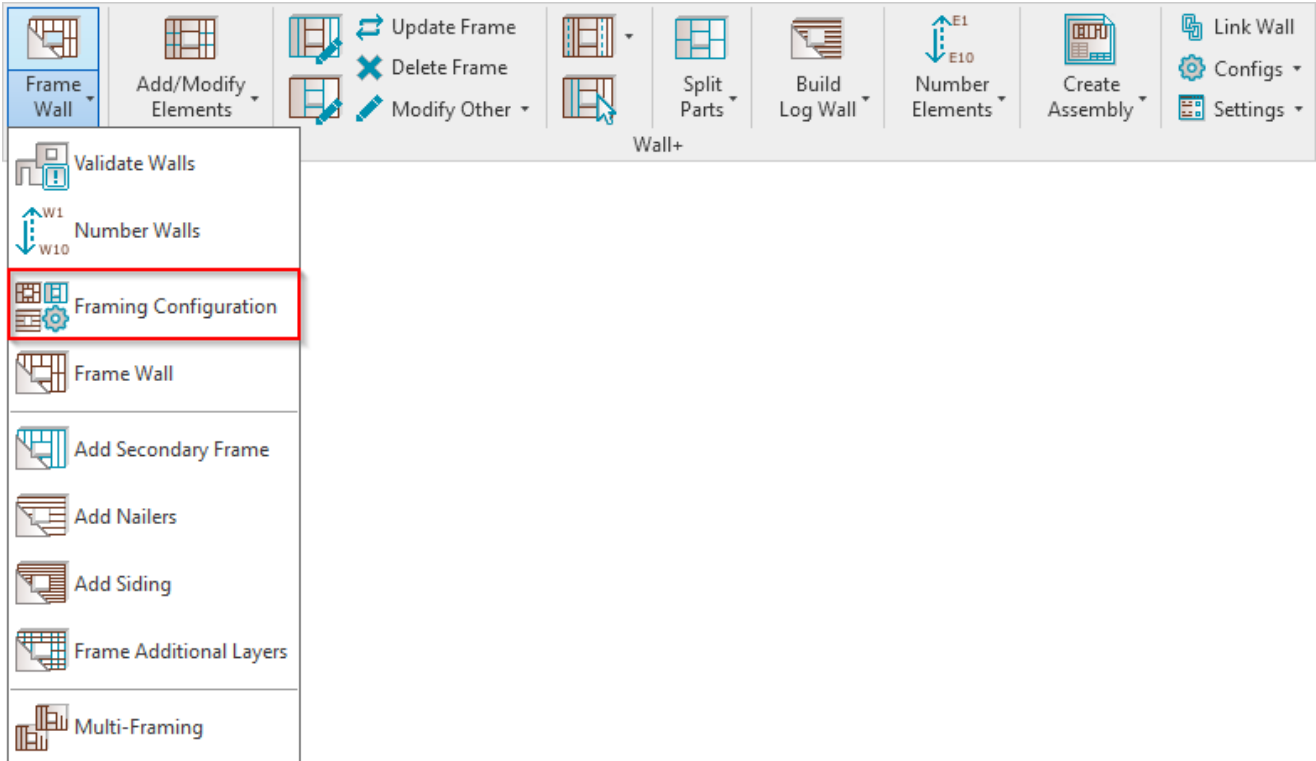


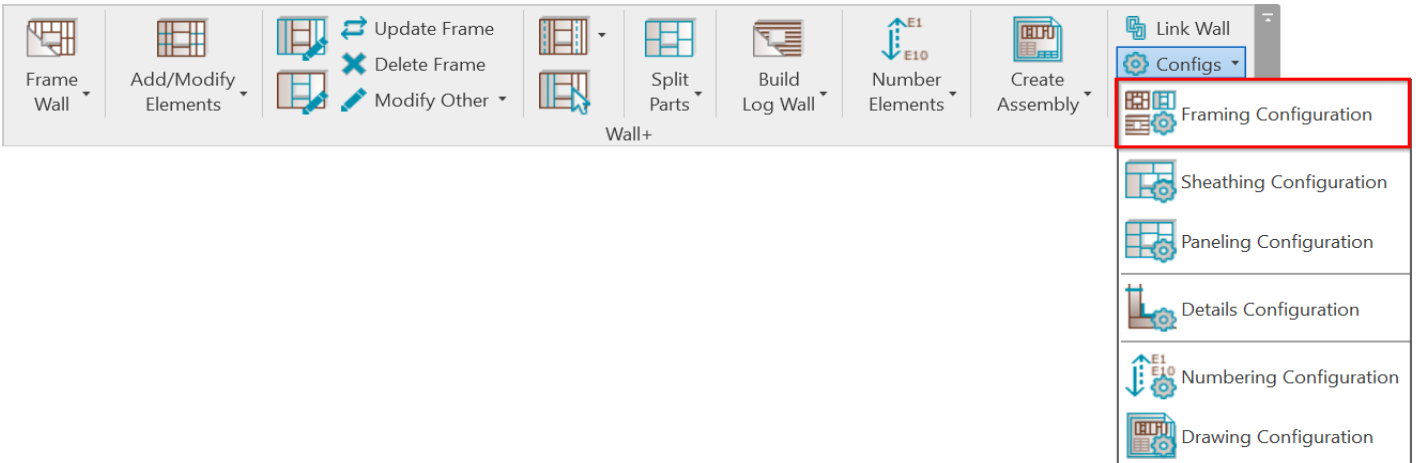
FRAMING CONFIGURATION – Dialog

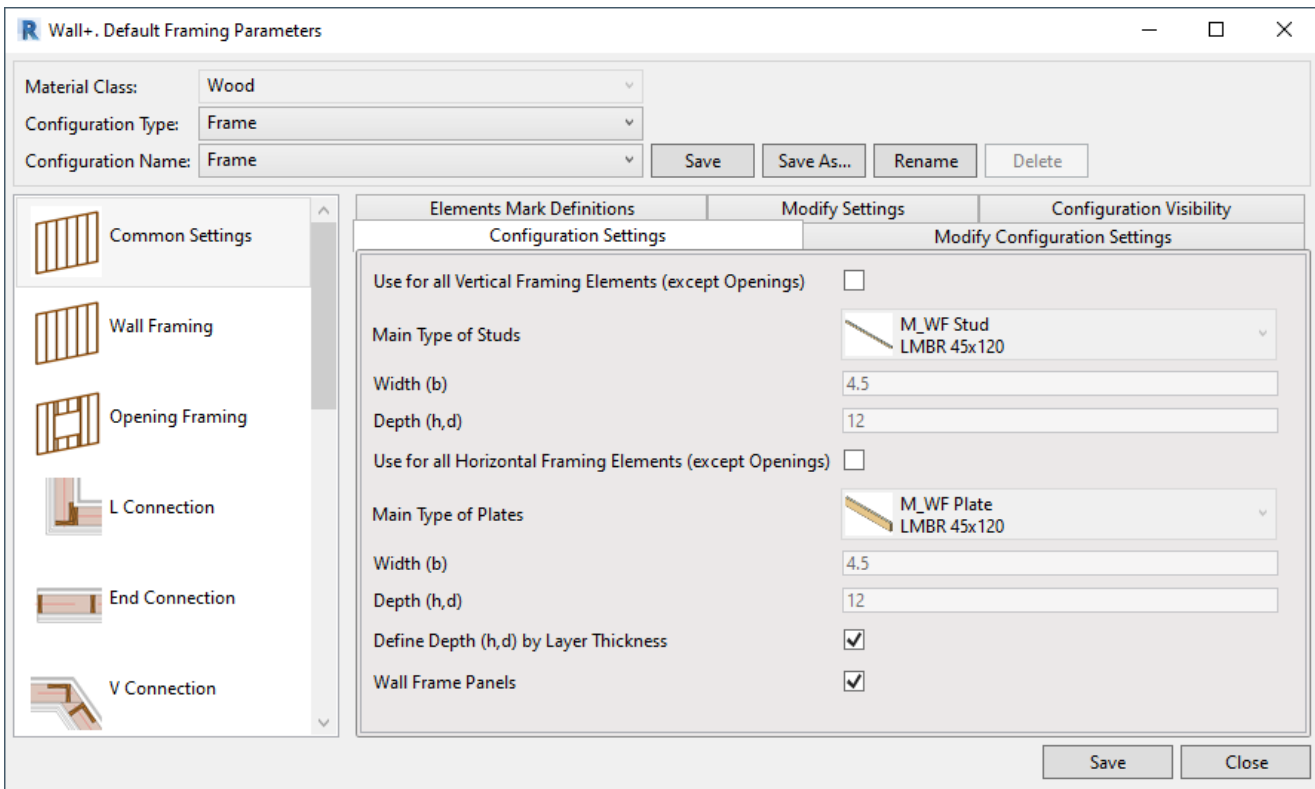
Modified on: Mon, 26 Oct, 2020 at 9:04 PM

Framing Configuration Dialog



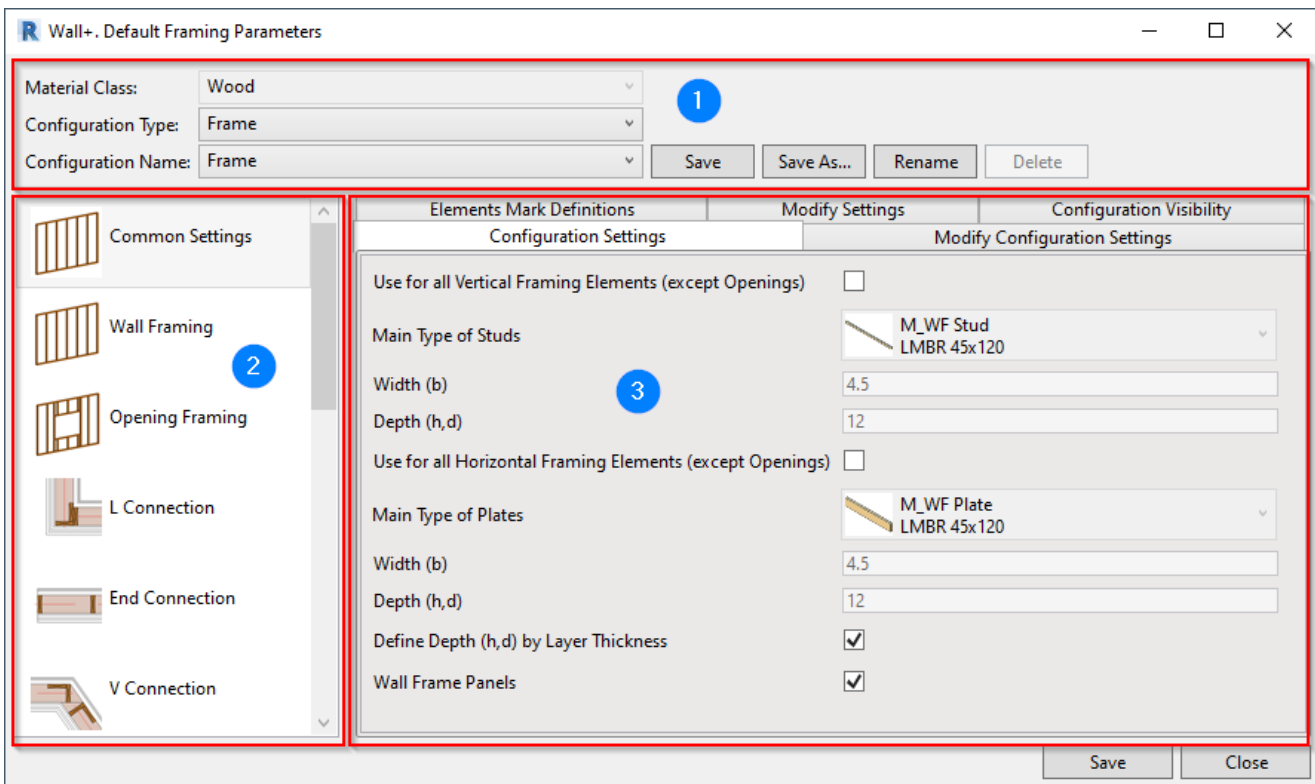
OR:





Framing Configuration – defines all framing settings. It allows user to configure and save settings for all sorts of frames – **Main Wall Frames**, **Secondary Frames**, **Vertical** and **Horizontal Nailers**, **Vertical** and **Horizontal Sidings**, **Wood Logs**. It is very a versatile tool with thousands of possibilities.

Main Divisions



The **Framing Configuration** dialog is divided into three main parts: **Top (1)**, **Left (2)** and **Right (3)**. In the Top part, choose the **Configuration Type** that you want to use and **Configuration Name** that you want to modify.

The Left part lets you select the framing type going in an easy top-to-bottom way. In the Right part are the settings.

Material Class – defines material. **Wood Framing Wall+** (<http://www.aga-cad.com/products/bim-solutions/wood-framing-wall>) uses Wood and **Metal Framing Wall+** (<http://www.aga-cad.com/products/bim-solutions/metal-framing-wall>) uses Steel.

Material Class:	Wood
-----------------	------