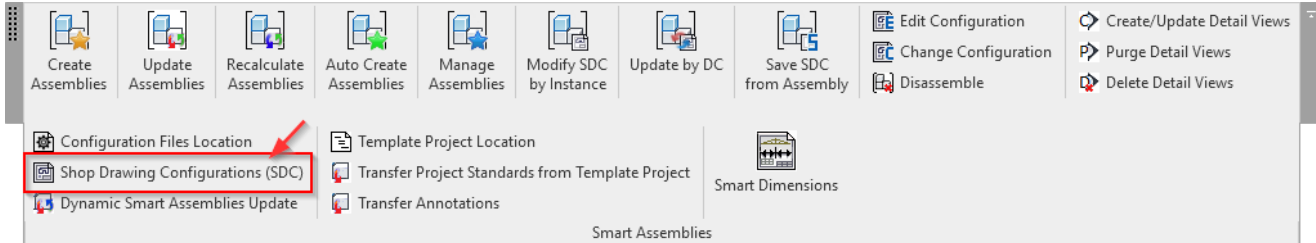


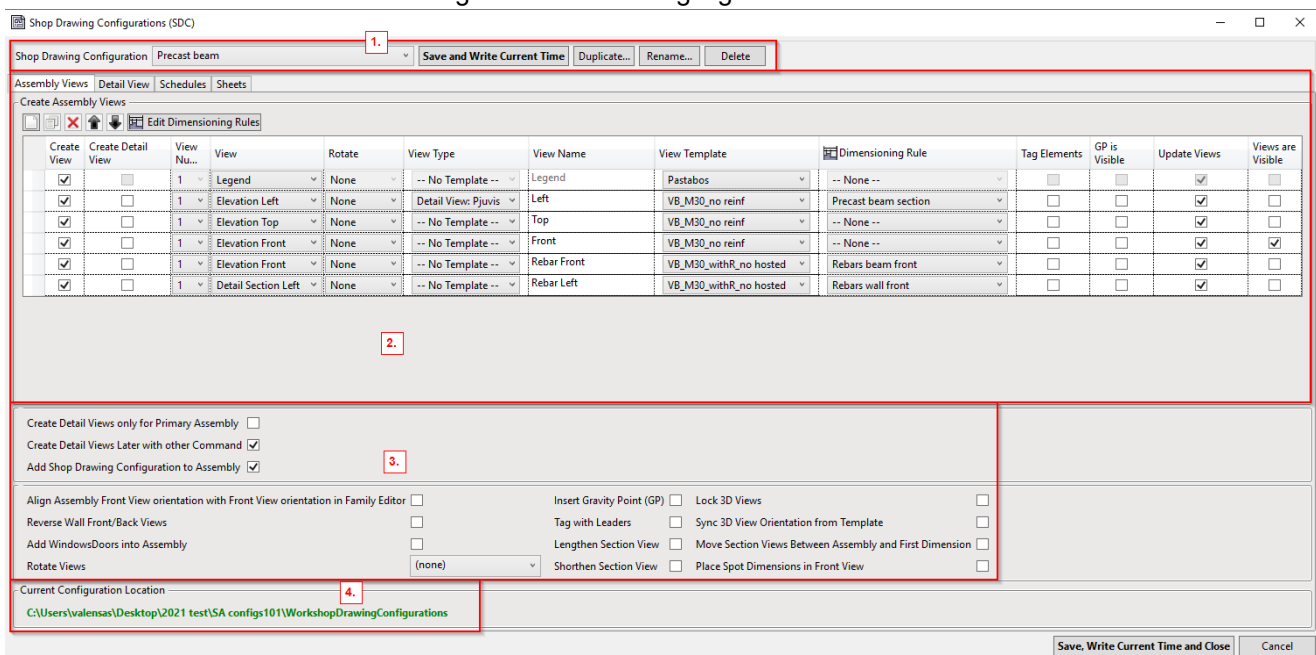
# Shop Drawing Configurations - Introduction

Modified on: Mon, 8 Jun, 2020 at 11:47 AM

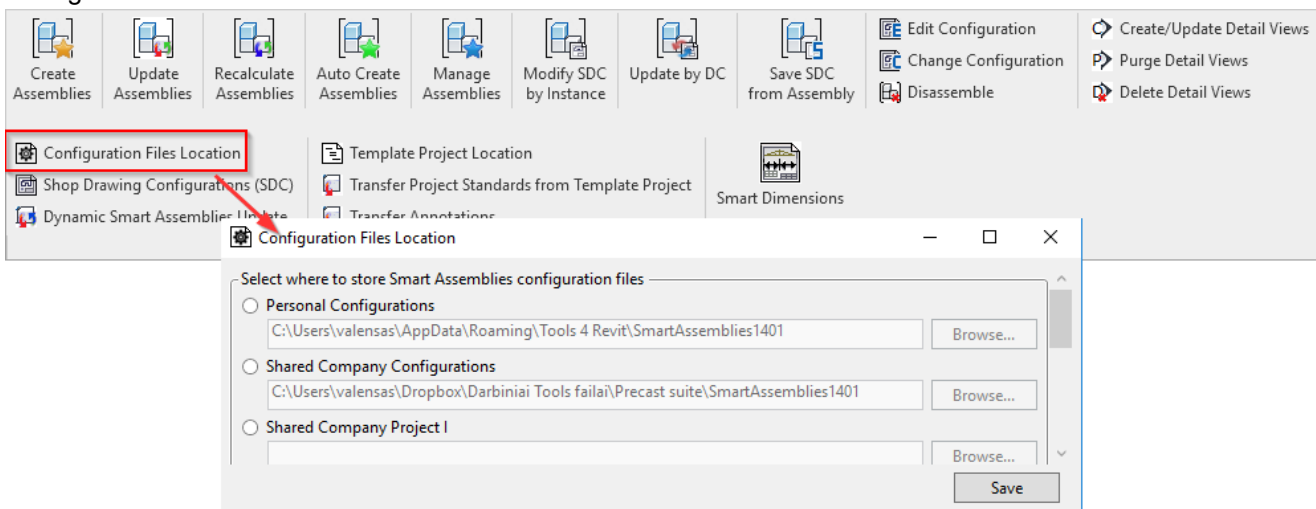
To create automatic shop drawings with dimensions, schedules and sheets, you first have to create configurations for shop drawings.



Let's look at the four areas in the configuration window highlighted below:



1. Duplicate, rename, and delete configurations here. Configurations are saved to your computer in the folder defined in Configuration Files Location:



2. Defining views that have to be created: Assembly Views, Detail Views, Schedules, Sheets.

3. Additional options and fine-tuning.

4. Shop drawing configurations and Template project locations can be seen here.

