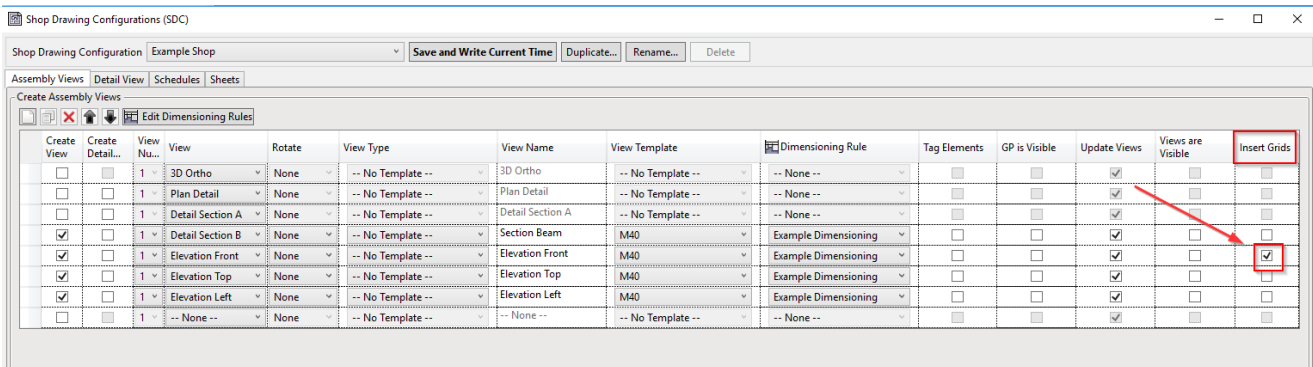


Shop Drawing Configurations - Insert Grid Lines

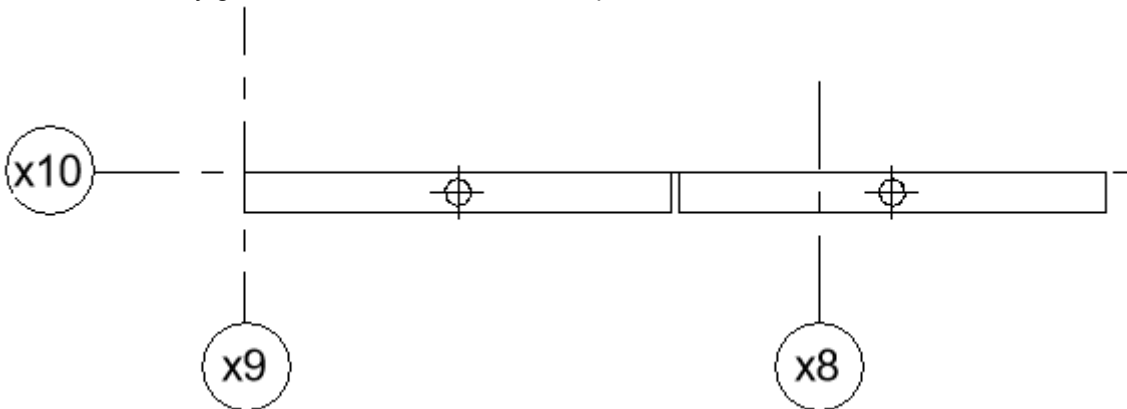
Modified on: Mon, 8 Mar, 2021 at 1:20 PM



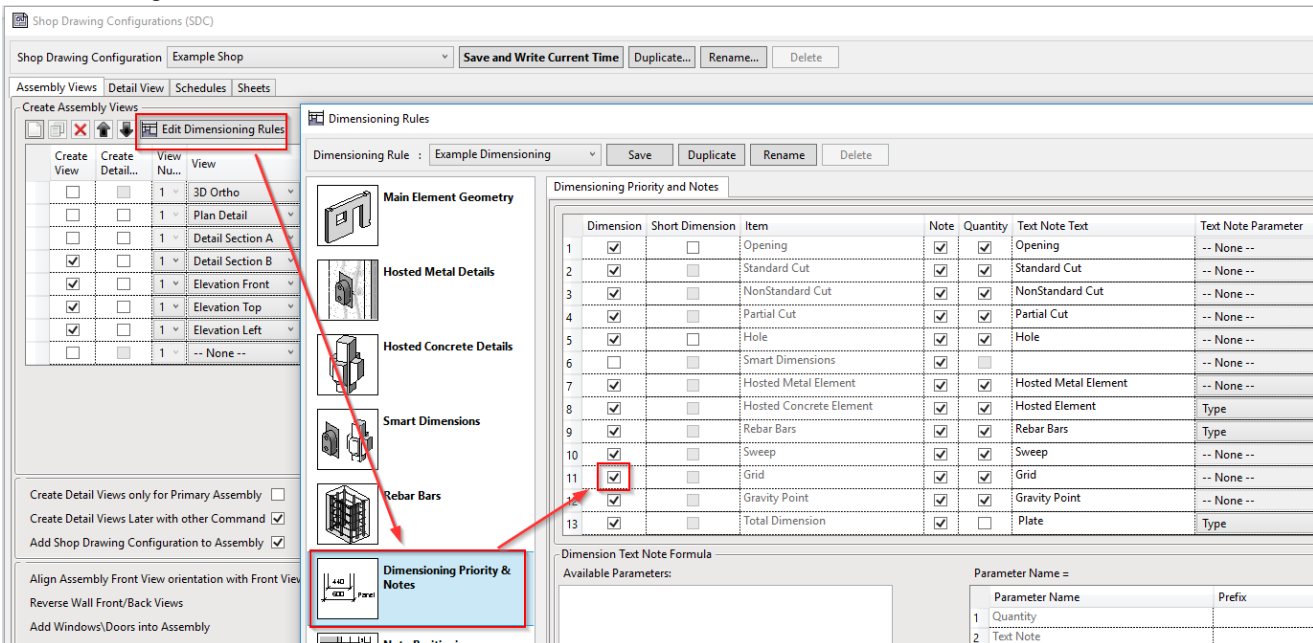
If this option is checked and the grid is crossing the assembly in the project, then Smart Assemblies will create a 2D family to represent the grid in the assembly view.

Example

Walls are crossed by grid lines in the model. This is a plan view of Level 1:

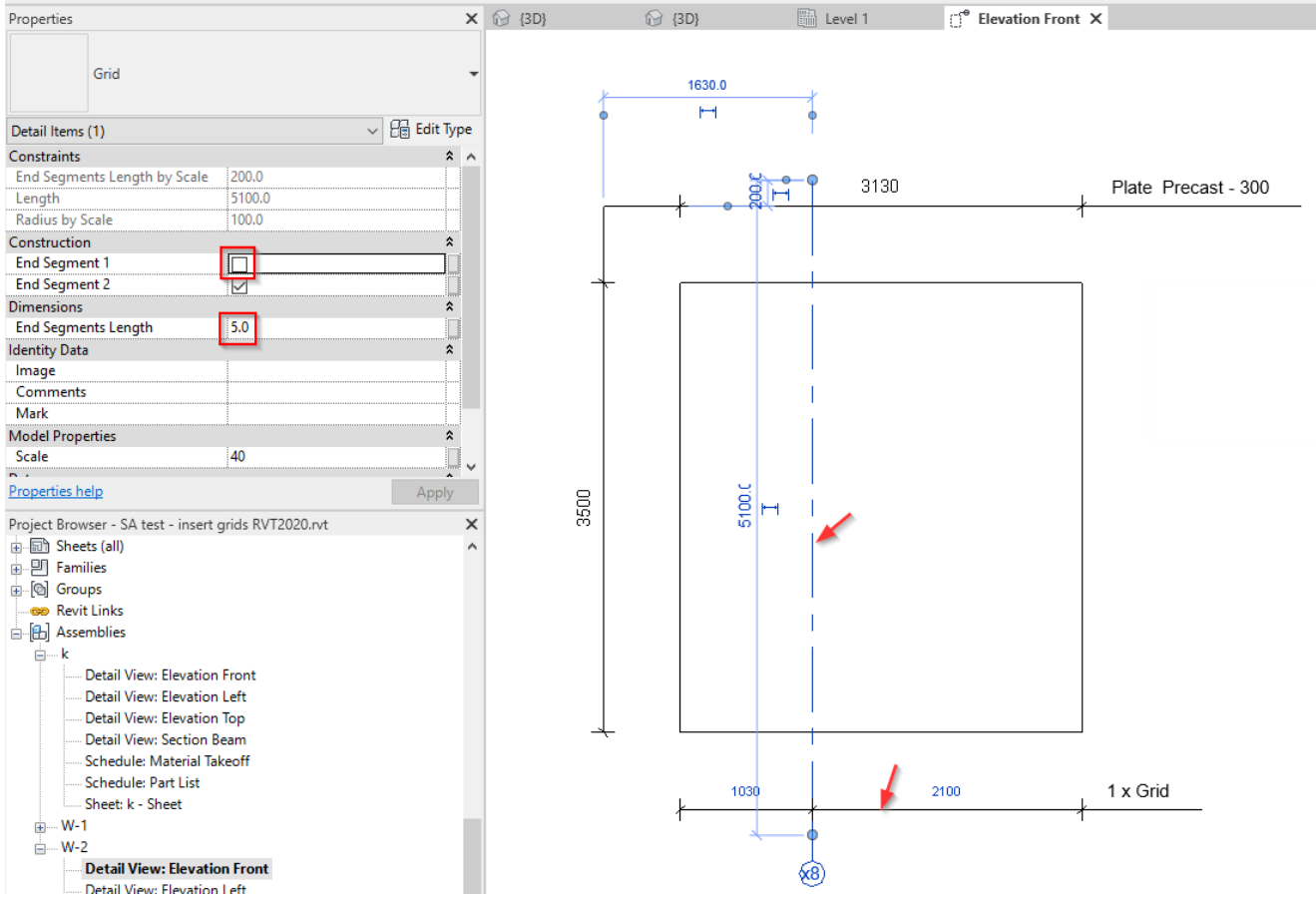


If we create an assembly with the **Insert Grids** option turned ON, then **Dimension** will also be turned ON in the Dimensioning Rules:

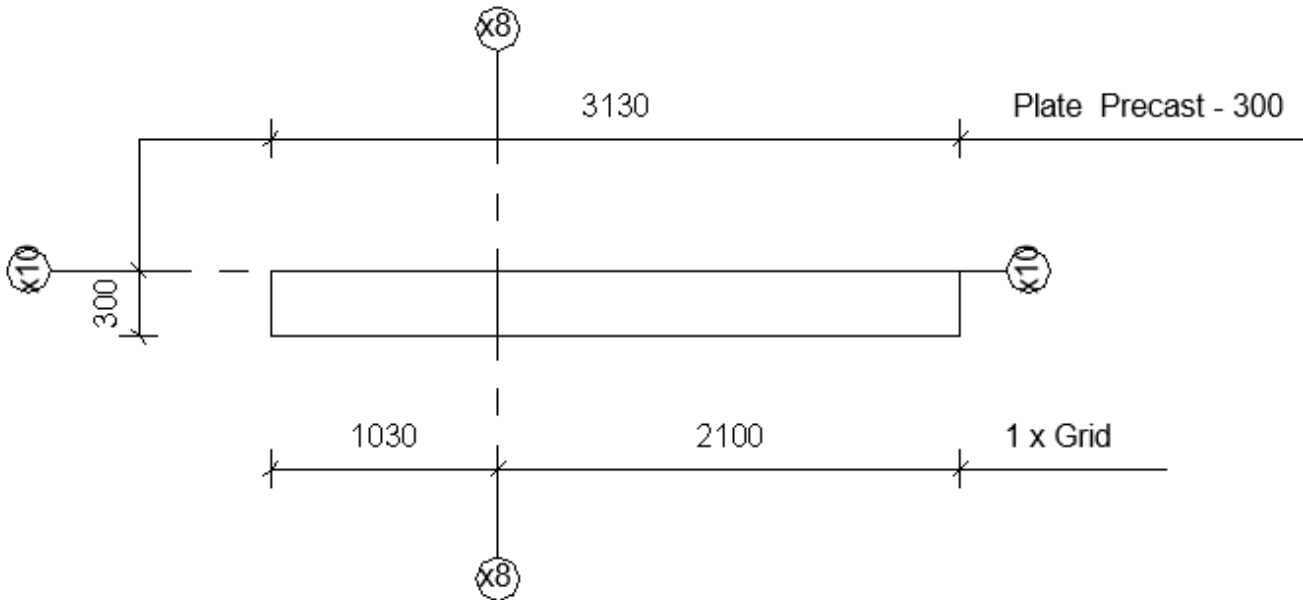


After the assembly has been created, you will get these results:

Front View - you can see the gridline 2D Family inserted with some available parameters and also the dimension line, in this case, from the grid to the wall.



Top View:



You can modify the Grid Family and use this option with different Categories, like columns, beams, etc. Here is an example of a column in the plan view:

