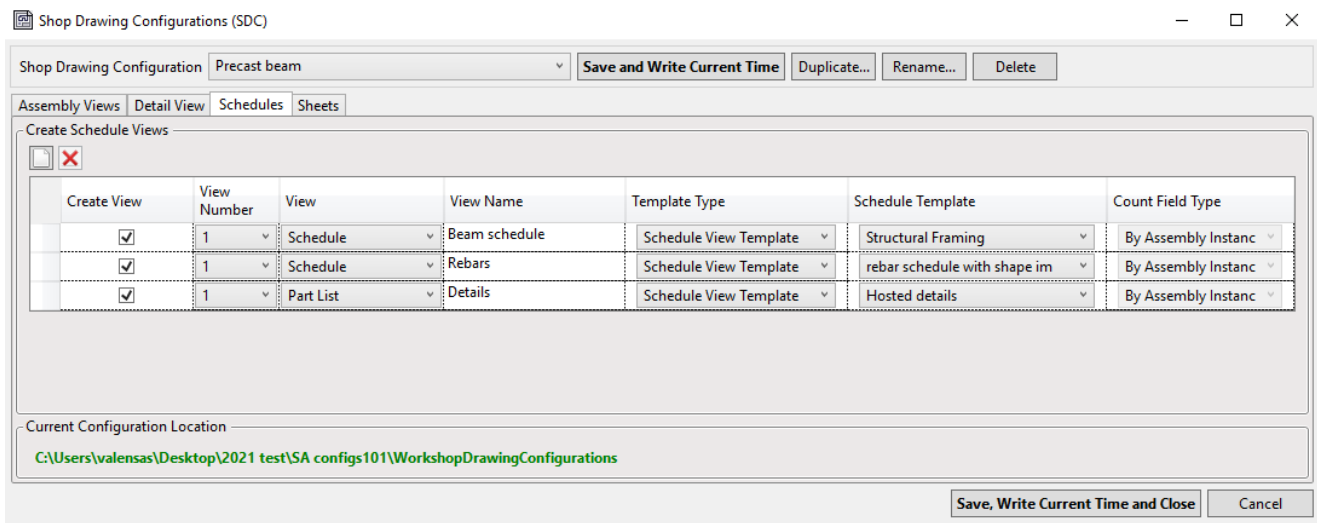


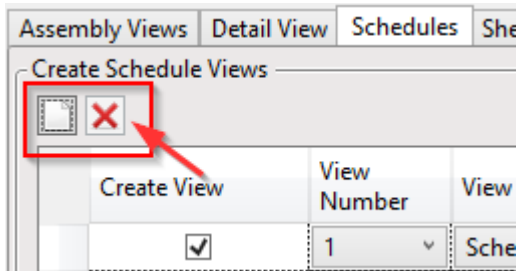
Shop Drawing Configurations - Schedules

Modified on: Mon, 8 Mar, 2021 at 1:25 PM

You can create any number of schedules for each Assembly.

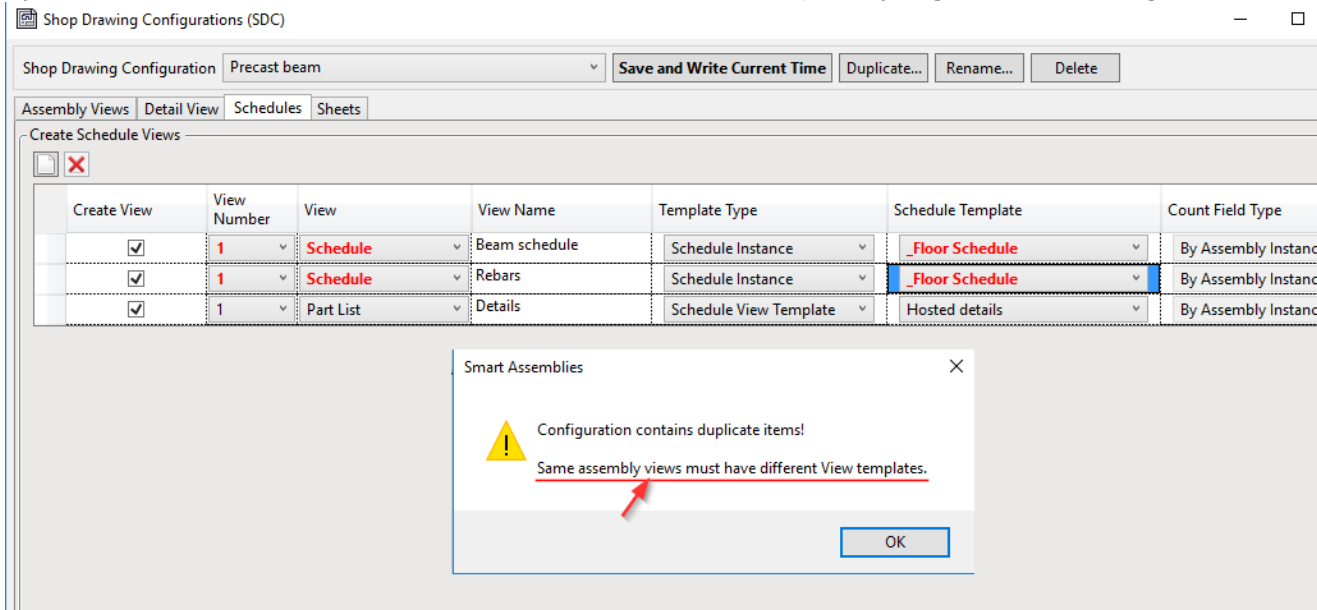


To add a new schedule or delete an existing one, use these buttons:



Create View - If ticked ON, schedule will be created.

View Number - In Smart Assemblies it's not possible to have the same Views with the same Schedule Templates. If you try to make two same Views (schedules) have the same Schedule Templates, you get an error message like this:



If you set different View Number values for those views, however, then it will be OK:

Assembly Views	Detail View	Schedules	Sheets		
Create Schedule Views					
Create View	View Number	View	View Name	Template Type	Schedule Template
<input checked="" type="checkbox"/>	1	Schedule	Beam schedule	Schedule Instance	_Floor Schedule
<input checked="" type="checkbox"/>	2	Schedule	Rebars	Schedule Instance	_Floor Schedule
<input checked="" type="checkbox"/>	1	Part List	Details	Schedule View Template	Hosted details

View - Select from three possible Schedule Types:

Schedule - schedule for one Category element

Part List - schedule for Multiple Categories

Material Takeoff - material takeoff for Multiple Categories

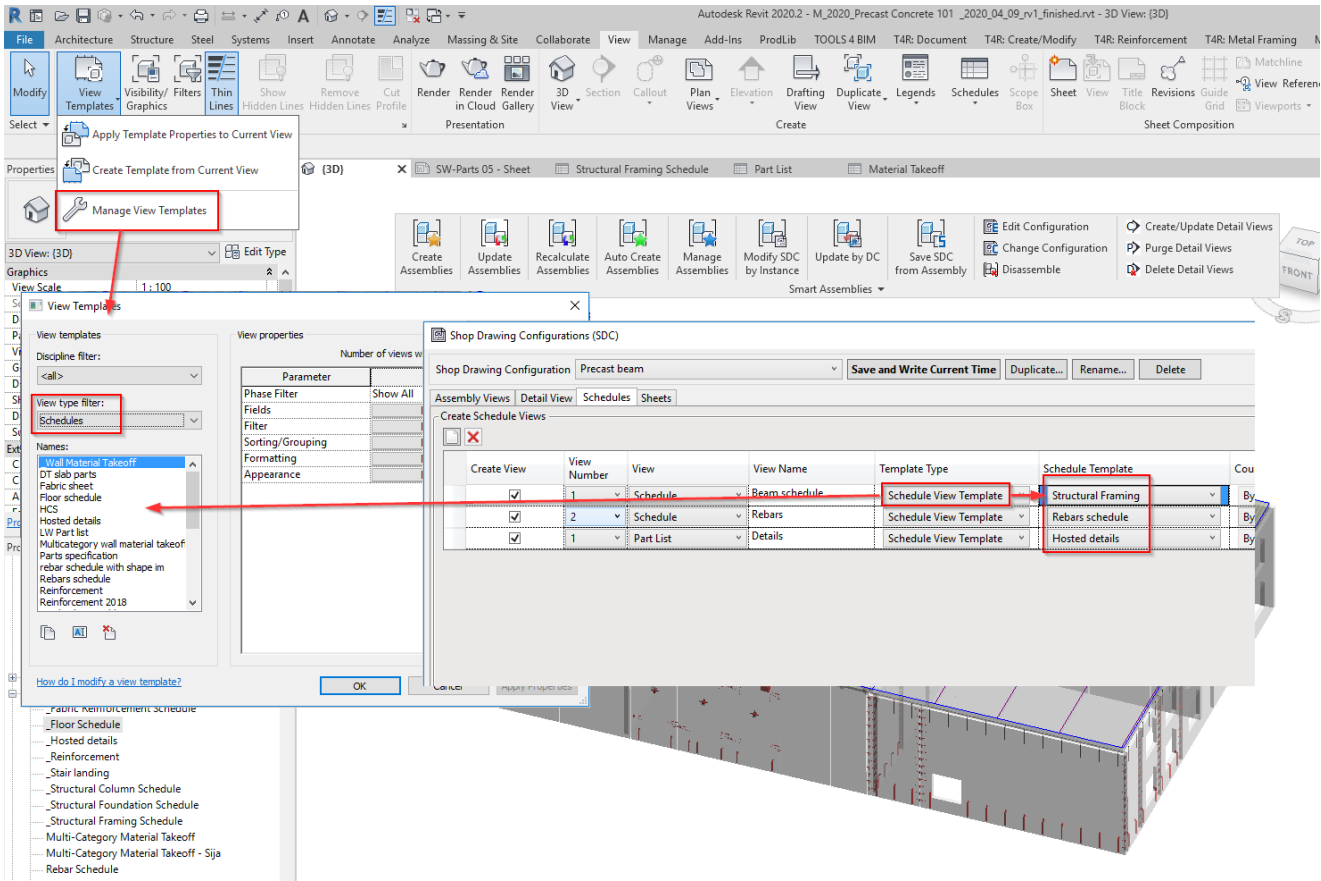
View Name - Enter the name for selected schedule

Template Type:

Schedule Instance - Schedule from Project Browser will be used as Schedule Template

The screenshot shows the 'Create Schedule Views' dialog box with a table of configurations. A red box highlights the 'View Number' column, showing values 1, 2, and 1. A red arrow points from the 'Schedule Instance' template type in the dialog to the 'Project Browser' on the left. In the Project Browser, a red box highlights the 'Schedules/Quantities (all)' folder, which contains several schedule templates like '_Fabric Reinforcement Schedule', '_Floor Schedule', and '_Hosted details'. Another red box highlights the '_Fabric Reinforcement Schedule' item in the Project Browser, with a red arrow pointing to the 'Schedule Instance' dropdown in the dialog. The dialog also shows a dropdown menu for 'Schedule Template' with options like '_Floor Schedule', '-- No Template --', and '_Fabric Reinforcement Schedule'.

Schedule View Template - Recommended option - View Template will be applied as Schedule Template



Count Field Type - Select if Count parameter should show values *By Assembly Instance* or *By Assembly Type*.