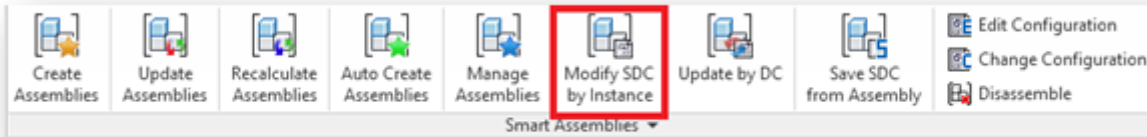


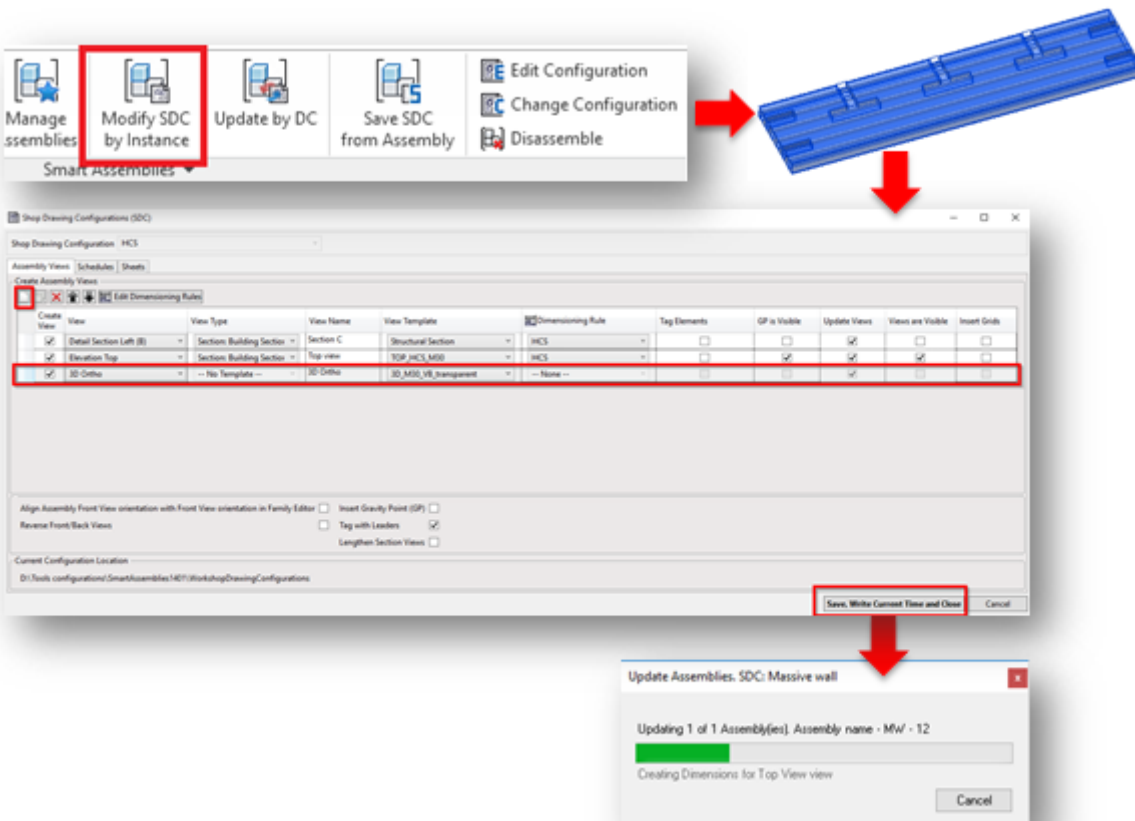
# Modify SDC by Instance

Modified on: Fri, 12 Jun, 2020 at 10:47 AM

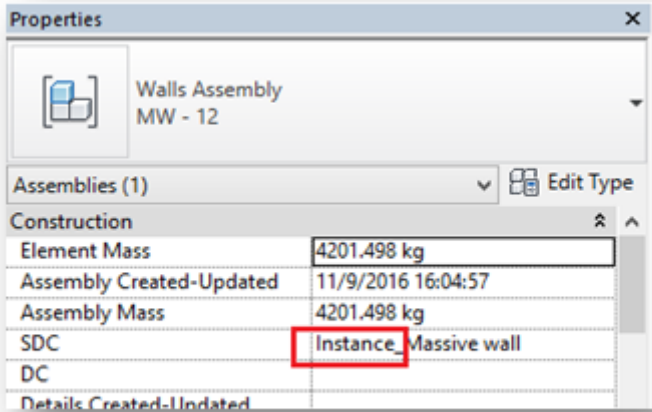
This command allows you to change the configuration for an instance assembly. You can change, add, or remove everything that is inside the configuration window for the selected assembly – add views, change templates, schedules, dimensioning rules, etc. and this will be applied only to that particular assembly.



1. Select Assembly
2. Execute Modify SDC by Instance
3. Change whatever you need in the configuration window
4. Save and close SDC window
5. Assembly is updated according to the changes in SDC



After you change these individual configurations, the assembly will be updated according to the changes you made, and in the SDC Instance parameter you will see that the name of configuration has changed. It now has an added prefix – **Instance\_**.



If you want to get back to the original instead of the modified configuration, use the **Update by DC** command.

If you want to further Modify the configuration, use either **Modify SDC by Instance** or **Edit Configuration** will open the Instance configuration window.

