

Additional Edge Rebar

Modified on: Mon, 26 Oct, 2020 at 2:23 PM

Additional Edge Rebar options are available in an additional tab – 'Additional Edge Rebar' – in 'Perimeter reinforcement'.

New Item	Remove Item	Move Up	Move Down	Count	Rebar bar type:	Bar shape	Wall Edge	Min search distance	Max search distance	Anchorage length	L-Shape Leg Length	Position	Edge Cover	Interior Cover	Exterior Cover	End Cover
1				2	N16	UShape	Bottom	0 mm	901 mm		600 mm	External and Internal	35 mm	47 mm	47 mm	35 mm
2				2	N16	UShape	Top	0 mm	901 mm		600 mm	External and Internal	35 mm	47 mm	47 mm	35 mm
3				2	N16	Straight	Left	0 mm	901 mm	600 mm		External and Internal	51 mm	47 mm	47 mm	100 mm
4				2	N16	Straight	Right	0 mm	901 mm	600 mm		External and Internal	51 mm	47 mm	47 mm	100 mm
5				2	N16	LShape	Top	0 mm	1200 mm	600 mm	600 mm	External and Internal	35 mm	47 mm	47 mm	35 mm
6				2	N16	Straight	Top	50 mm	300 mm	600 mm		External and Internal	35 mm	47 mm	47 mm	35 mm
7				2	N16	Straight	Bottom	100 mm	800 mm	600 mm		External and Internal	35 mm	47 mm	47 mm	35 mm

You can place straight, L, and U shaped bars at selected **vertical** and **horizontal** edges of the wall.

New Item	Remove Item	Move Up	Move Down	Count	Rebar bar type:	Bar shape	Wall Edge	Min search distance	Max search distance	Anchorage length	L-Shape Leg Length	Position	Edge Cover	Interior Cover	Exterior Cover	End Cover
1				2	N16	UShape	Top & Botto	0 mm	901 mm		600 mm	External and Internal	35 mm	47 mm	47 mm	35 mm
2				2	N16	Straight	Left & Right	0 mm	901 mm	600 mm		External and Internal	51 mm	47 mm	47 mm	100 mm
3				2	N16	LShape	Top	0 mm	1200 mm	600 mm	600 mm	External and Internal	35 mm	47 mm	47 mm	35 mm
4				2	N16	Straight	Top & Botto	50 mm	800 mm	600 mm		External and Internal	35 mm	47 mm	47 mm	35 mm

New Item - adds a line of settings, wherein you can define what kind of bar should be created and define other necessary settings

Remove, Move Up, Move Down - changes order of added lines or removes selected lines

Count - number of bars that should be created through the thickness of a wall layer. Count can be 1 or 2 bars per line.

Rebar bar type - type of rebar that should be used

Wall Edge - select on which edge of the wall rebar should be created

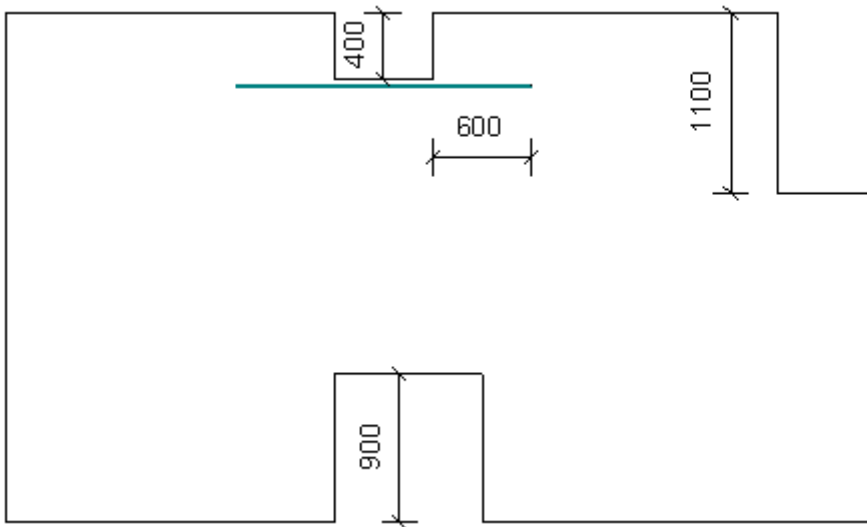
Min/Max search distance - defines range where bars will be created from selected wall edge

Example 1

Min distance does not allow you to create bars at top and bottom of a given wall.

Max distance limits placement of bars at deeper cuts.

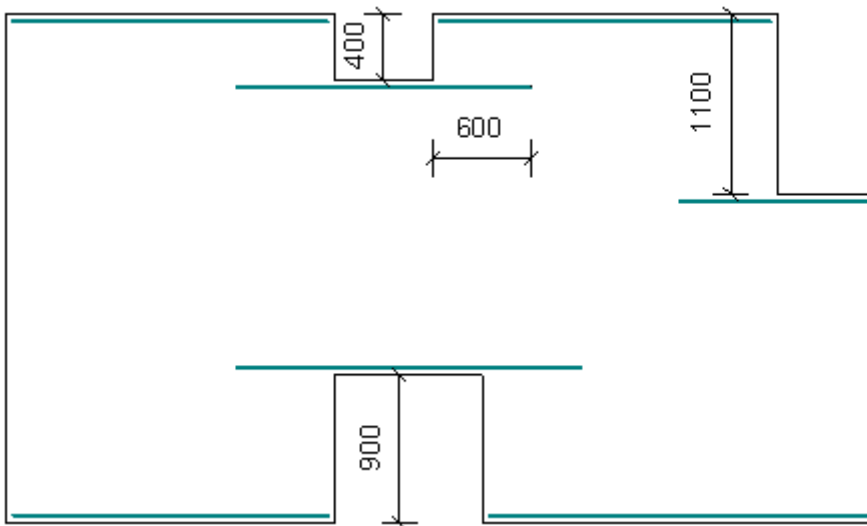
	Count	Rebar bar type:	Bar shape	Wall Edge	Min search distance	Max search distance	Anchorage length
1	2	N16	Straight	Top & Botto	50 mm	800 mm	600 mm



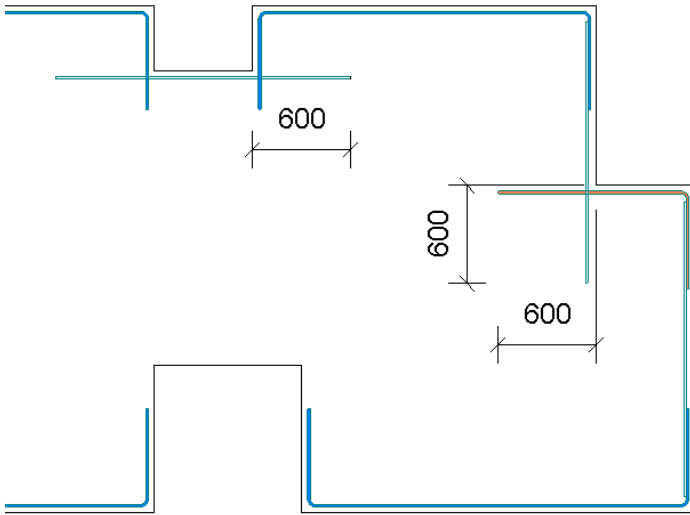
Example 2

All edges are within search distance limits, so bars are created at all edges.

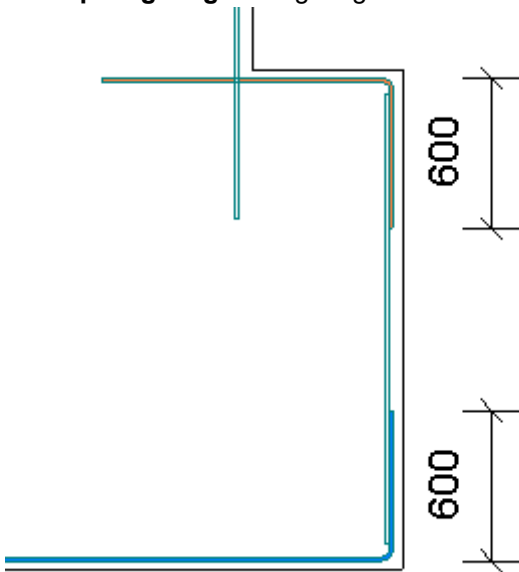
New Item	Remove Item	Move Up	Move Down				
	Count	Rebar bar type:	Bar shape	Wall Edge	Min search distance	Max search distance	Anchorage length
1	2	N16	Straight	Top & Botto	0 mm	1500 mm	600 mm



Anchorage distance - extension of *straight* and *L shape* bars from perpendicular edge, if there is such



L-Shape leg length – leg length for U- and L-shaped bars



Position -

If Count = 1, bars can be placed from center or external/internal side of the wall.

If Count = 2, bars can be placed from external/internal sides of the wall.

Edge cover - distance from edge

Interior/Exterior Cover - distance from side faces of the wall

End cover -

For straight bars, this is the distance from the end of the bar to the perpendicular edges.

For L- and U-shaped bars, it's a cover for legs from perpendicular edges.