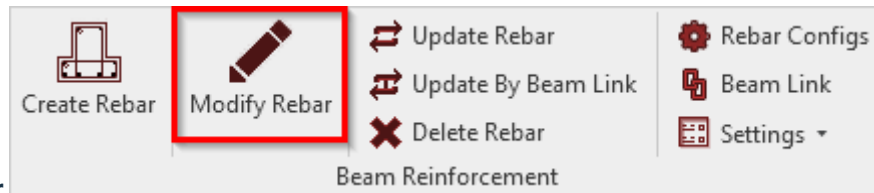


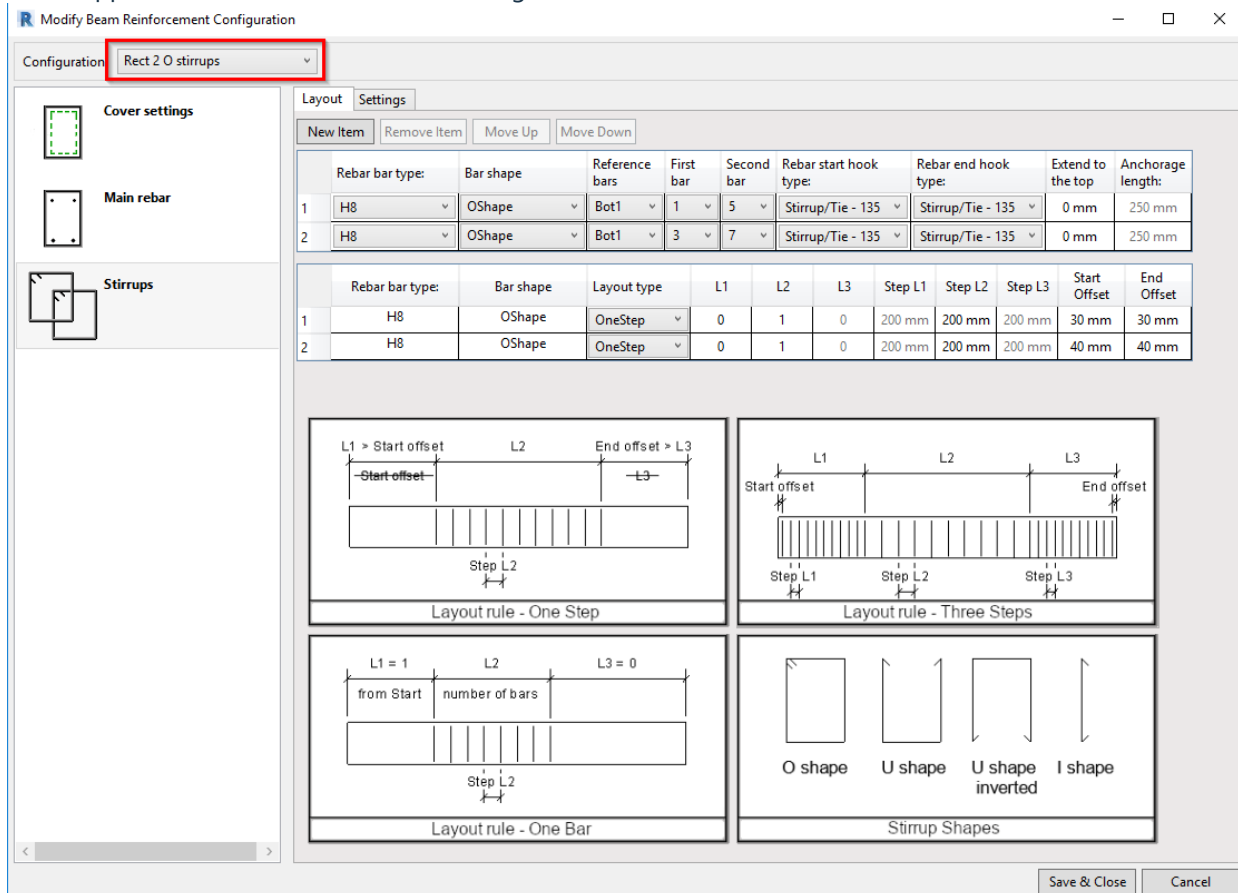
# Modify Rebar

Modified on: Thu, 13 Aug, 2020 at 9:27 AM

Change reinforcement settings only for selected Structural Framing element.



1. Select **Modify Rebar**.
2. Select rebar. Configuration window for selected reinforcement will open. You can see the name of the configuration in the upper-left of the Reinforcement Configuration window:



3. Make desired changes in configuration window – add rebar, switch off selected rebar, change rebar type, step, hooks, or other settings – and finish with Save & Close.

Reinforcement will be updated for that Structural Framing instance. There will be no impact on configurations saved in Configuration File's Location.

Alternative sequence of steps:

1. Select Rebar.
2. Select **Modify Rebar**. Configuration window for selected reinforcement will open.
3. Make desired changes in configuration window – add rebar, switch off selected rebar, change rebar type, step, hooks, or other settings – and finish with Save & Close.

