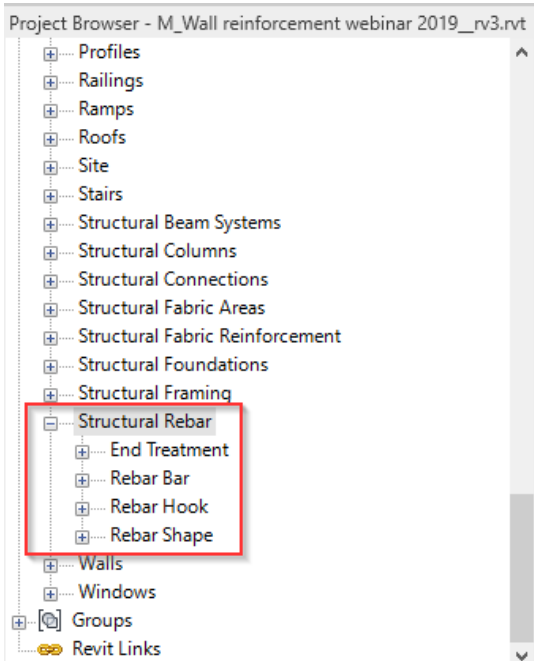


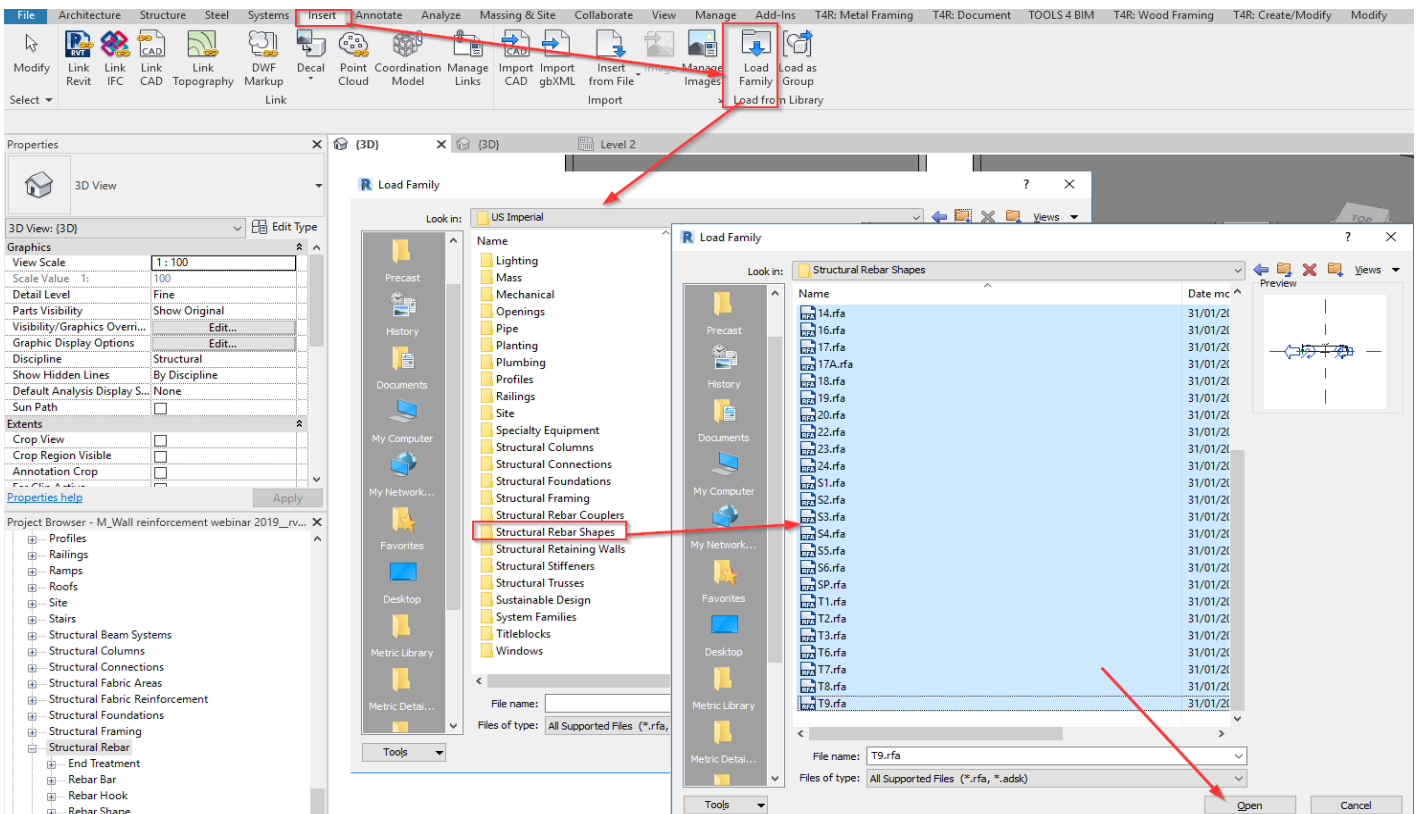
Workflow

Modified on: Fri, 23 Oct, 2020 at 3:35 PM

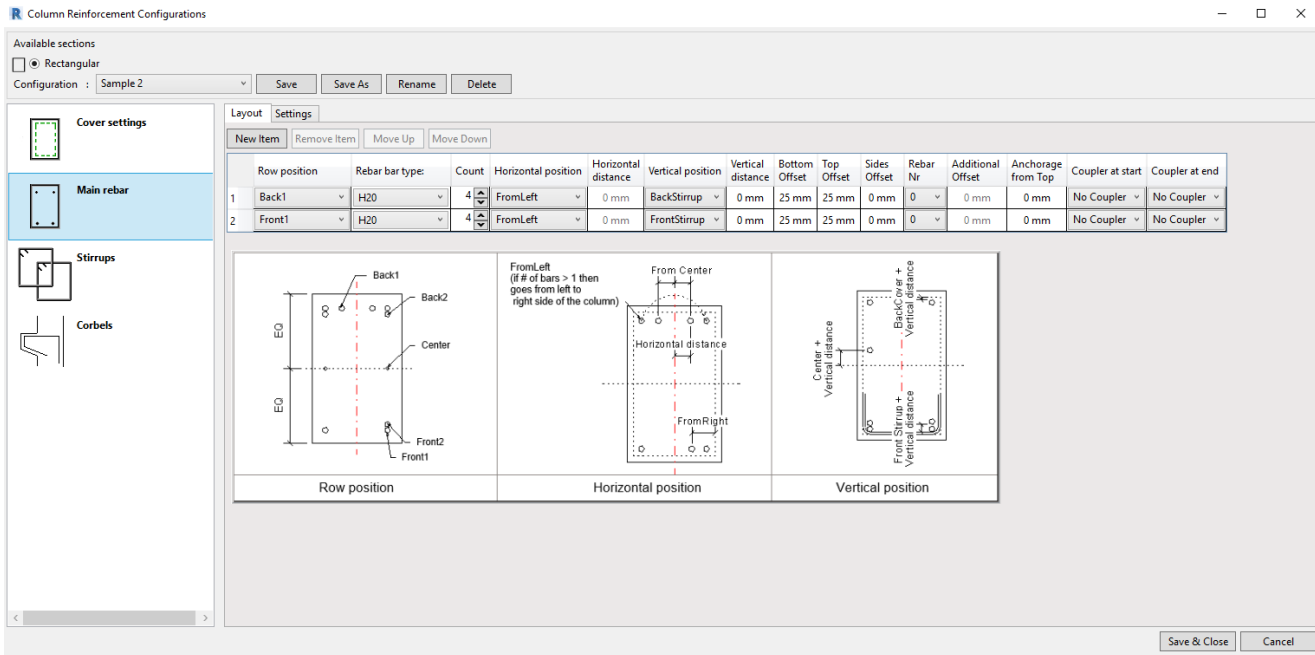
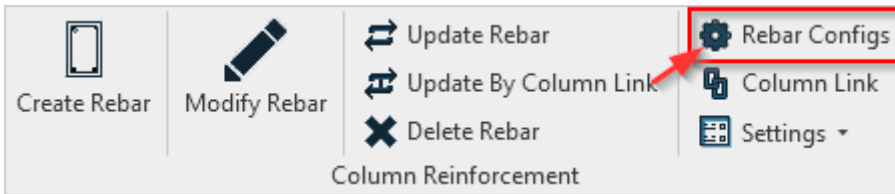
1. Make sure you have Rebar Shapes in your model. They should be visible in your Project Browser:



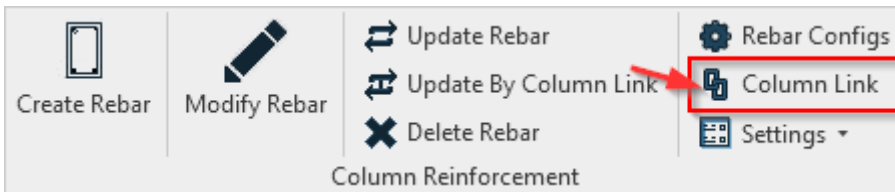
If you don't have them, load them from Library.



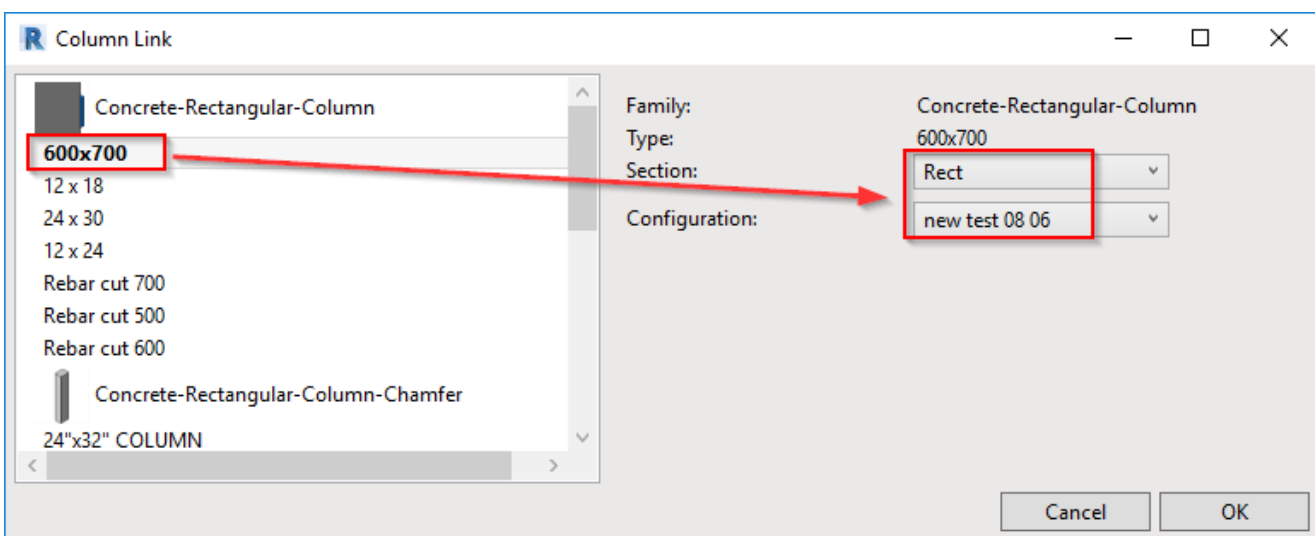
2. Prepare **Rebar Configuration** for selected column section.



3. Assign configurations to Structural Column Types by using **Column Link** (<https://agacad.freshdesk.com/en/support/solutions/articles/44001982871-cr-column-link>).



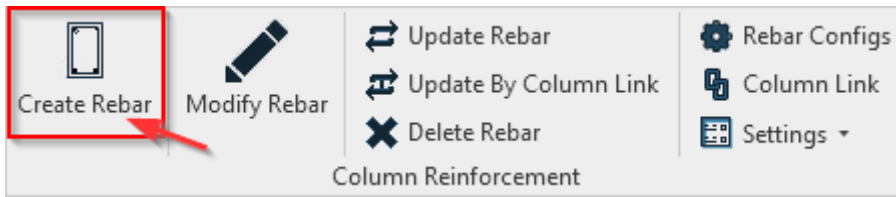
For each column Type assign Section and Configuration.



4. Select Structural Column(s) with the Type used in Column Link, and use **Create Rebar** command. It will read which reinforcement configuration should be used from the Column Link and will then create rebar.

NOTE:

1. corbels must be created as separate families, they can not be part of Structural Column family. For more info, see help file about corbels.
2. if you need to have a cut in the column, use families with voids instead of adding voids to Column family.



Result:

