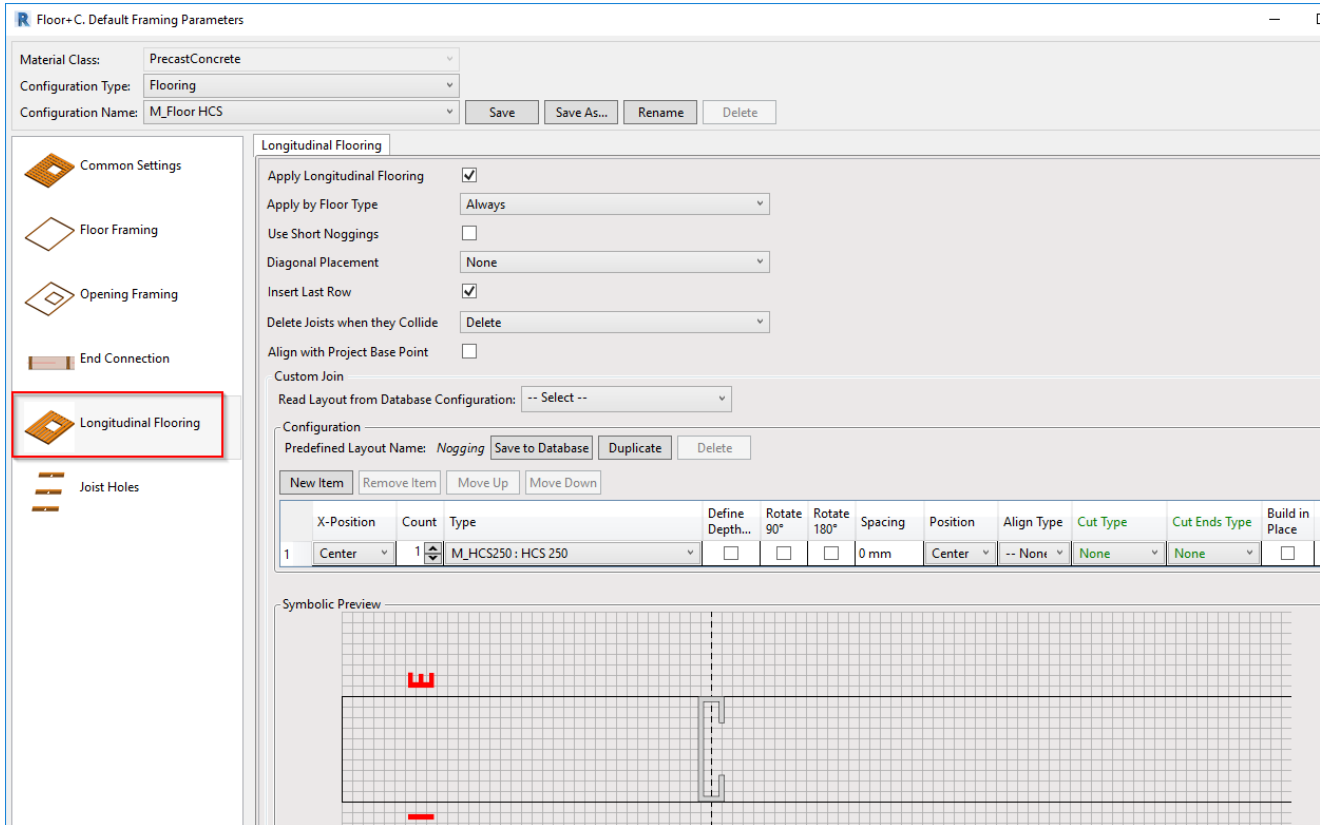


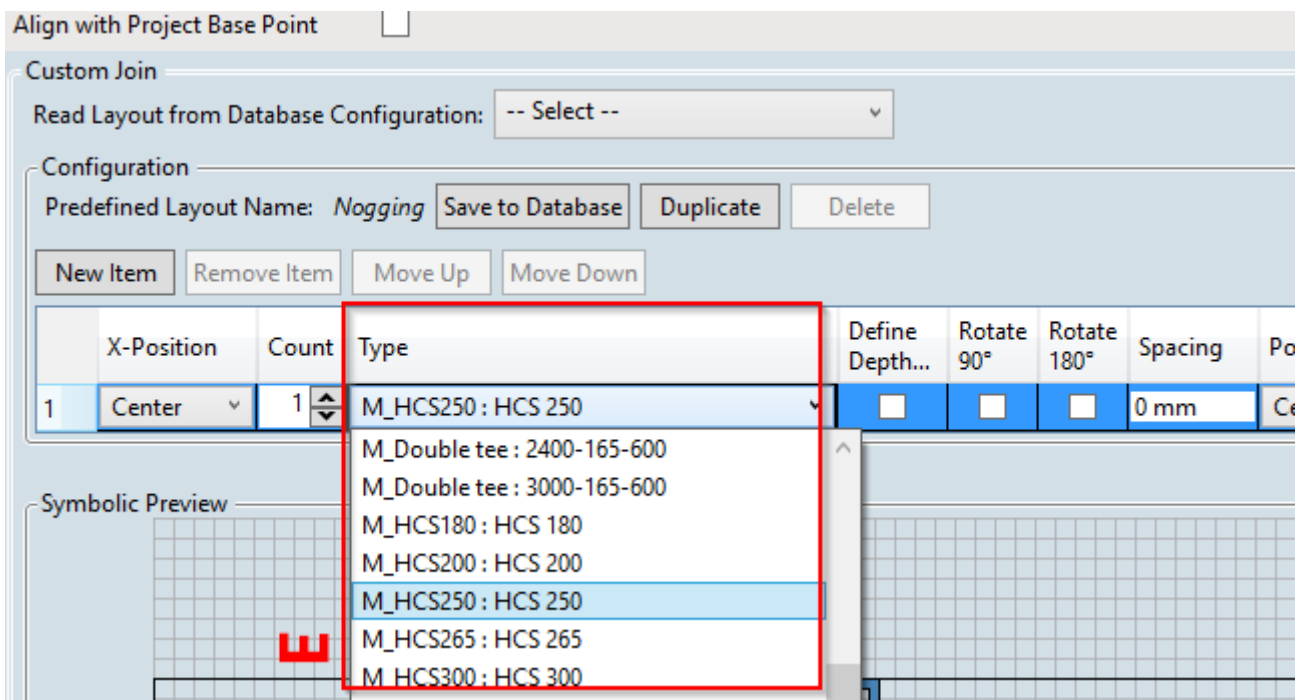
Configuration Window - Longitudinal Flooring

Modified on: Mon, 22 Jun, 2020 at 7:11 PM

Longitudinal Flooring - main settings for the layout of Structural Framing families.



Type - select Structural Framing family which should be used for slab layout



Array 1 - settings for layout

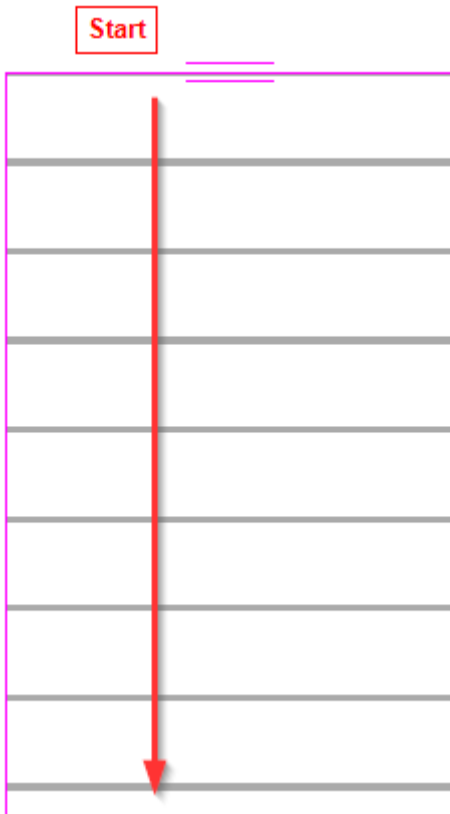
	X-Position	Count	Type	Define Depth...	Rotate 90°	Rotate 180°	Spacing	Position	Align Type	Cut Type	Cut Ends Type	Build in Place
1	Center	1	M_HCS250 : HCS 250	<input type="checkbox"/>	<input type="checkbox"/>	<input type="checkbox"/>	0 mm	Center	-- Non	None	None	<input type="checkbox"/>

Symbolic Preview

Rotate by Slope

Array 1	Array 2
Array 1	Array 2
Apply Offset	Apply Offset
Offset by	Offset by
Offset from Start	Offset
Additional Offset by Slope	Additional Offset by Slope
Spacing	Spacing
Number	Number
Measure to	Measure to
Build in Place	Build in Place

Array from Start, End - layout of Structural Framing elements will start from one side of the Floor and will continue to the other side of the floor with defined spacing and number of elements. Start is the location of Span direction symbol in Floor boundary.



Spacing - distance between Structural Framing elements.

Number - number of elements that will be created starting from selected side. It could be any big number if you want to fill the whole reference slab; once it reaches the end edge of the slab, it will not generate more slabs than needed.

