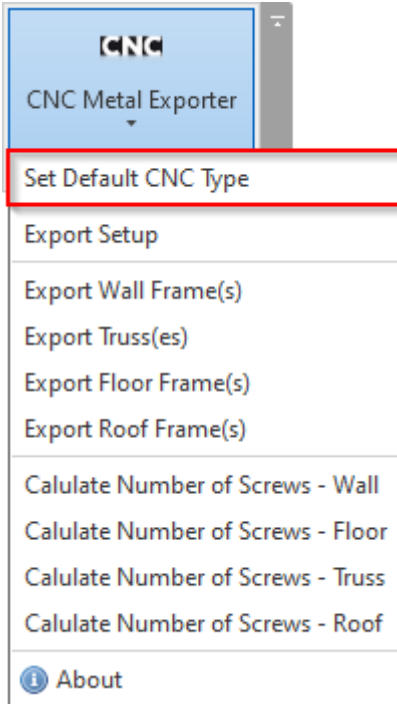


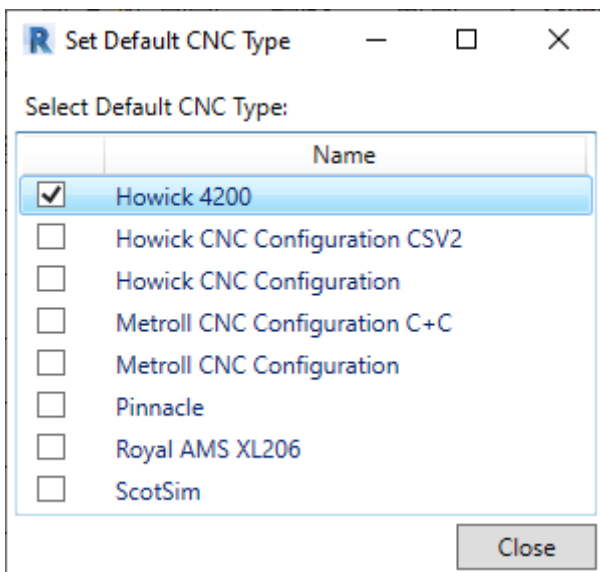
SET NEW OF MODIFY CNC TYPE

Modified on: Wed, 11 Aug, 2021 at 9:46 PM

Set Default CNC Type



Set Default CNC Type – default configurations for exporting to the most popular CNC machines: **Howick, Metroll, Pinnacle, Royal C.N.C.**, (<https://agacad.com/products/bim-solutions/metal-framing-cnc-exporters/overview#howick>) and **Scottsdale**. You can modify them or create new ones. Configuration names can be written to the wall, floor, roof, or truss types in the project. In such cases, different elements can be exported to different CNC machines or using different settings.



Every type is placed in a separate XML file. In order to modify or create new ones, go here:
C:\Users\user name\AppData\Roaming\Tools 4 Revit\CncMetalExporter22 or other \CNC Configurations

1. We recommend keeping the original XML file and making a copy of it:

Name	Date modified	Type	Size
_Default_Configuration.xml	2020-12-22 17:56	XML Document	1 KB
Howick 4200.xml	2018-04-20 14:43	XML Document	3 KB
Howick CNC Configuration CSV2 test.xml	2018-05-03 13:56	XML Document	3 KB
Howick CNC Configuration CSV2.xml	2018-05-03 13:56	XML Document	3 KB
Howick CNC Configuration.xml	2018-04-20 14:43	XML Document	3 KB
Metroll CNC Configuration C+C.xml	2018-04-20 14:43	XML Document	3 KB
Metroll CNC Configuration.xml	2018-04-20 14:43	XML Document	3 KB
Royal AMS XL206.xml	2018-12-10 14:08	XML Document	3 KB
ScotSim.xml	2018-04-20 14:43	XML Document	3 KB

2. Open XML file and change the name to match that of the XML filename near **ConfigurationName**:

```

1  <?xml version="1.0" ?>
2  <CncConfig xmlns:xsd="http://www.w3.org/2001/XMLSchema" xmlns:xsi="http://www.w3.org/2001/XMLSchema-instance" >
3    <GUID>402F3CFD-BDF9-4781-8B5B-3375929E79A3</GUID>
4    <ConfigurationName>Howick CNC Configuration CSV2 test</ConfigurationName>
5    <IsPedefinedConfig>false</IsPedefinedConfig>
6    <AdditionalCutParameter />
7    <EndToEndJoinOnSameLine>false</EndToEndJoinOnSameLine>
8    <NumberOfScrewsCoefficient>1</NumberOfScrewsCoefficient>
9    <CncCommands>
10     <CncCommandInfo>
11       <Command>Dimple</Command>
12       <CommandCode>DIMPLE</CommandCode>
13       <DimensionFromStartEnd>0</DimensionFromStartEnd>
14       <CommandTolerance>0</CommandTolerance>
15       <CommandLength>0</CommandLength>
16     </CncCommandInfo>

```

New configuration type is created:

Set Default CNC Type

Select Default CNC Type:

	Name
<input type="checkbox"/>	Howick 4200
<input checked="" type="checkbox"/>	Howick CNC Configuration CSV2 test
<input type="checkbox"/>	Howick CNC Configuration CSV2
<input type="checkbox"/>	Howick CNC Configuration
<input type="checkbox"/>	Metroll CNC Configuration C+C
<input type="checkbox"/>	Metroll CNC Configuration
<input type="checkbox"/>	Royal AMS XL206
<input type="checkbox"/>	ScotSim

Close

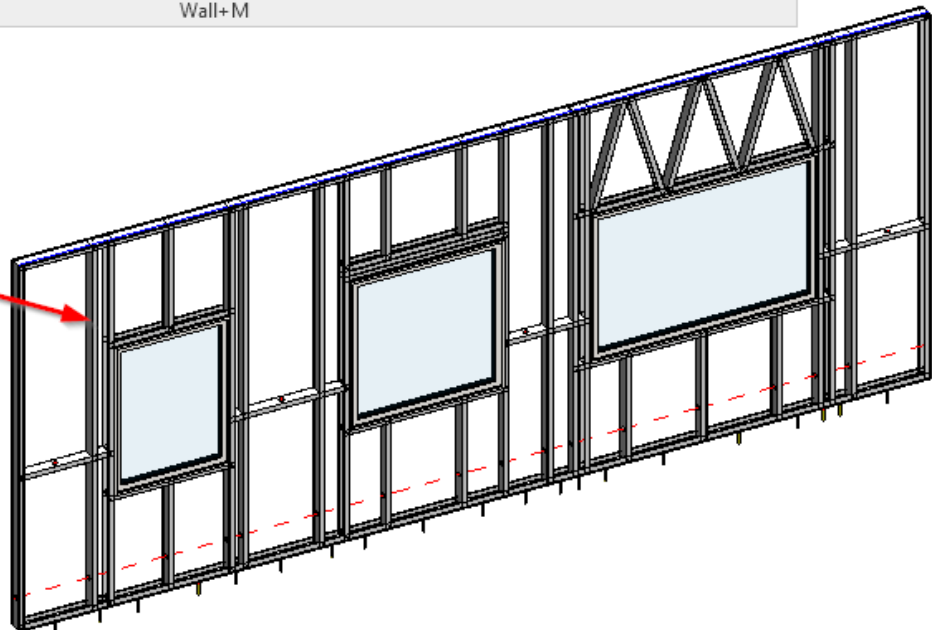
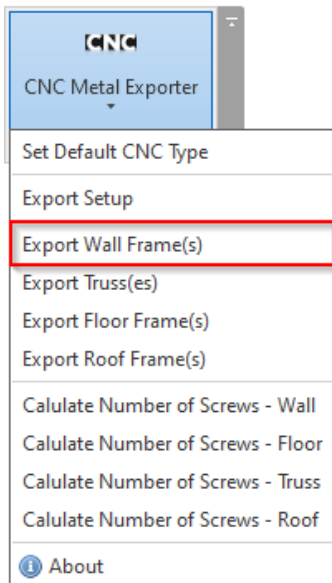
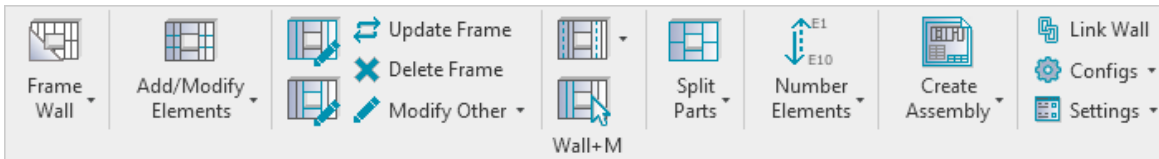
Now you can modify the content of the newly created CNC type.

For example, let's say you don't use dimples in your workflow. So change **DIMPLE** to **NONE** near **CommandCode**:

```
Howick CNC Configuration CSV2 test.xml
1 <?xml version="1.0"?>
2 <CncConfig xmlns:xsd="http://www.w3.org/2001/XMLSchema" xmlns:xsi="http://w
3 <GUID>402F3CFD-BDF9-4781-8B5B-3375929E79A3</GUID>
4 <ConfigurationName>Howick CNC Configuration CSV2 test</ConfigurationName>
5 <IsPedefinedConfig>>false</IsPedefinedConfig>
6 <AdditionalCutParameter />
7 <EndToEndJoinOnSameLine>>false</EndToEndJoinOnSameLine>
8 <NumberOfScrewsCoeficient>1</NumberOfScrewsCoeficient>
9 <CncCommands>
10 <CncCommandInfo>
11 <Command>Dimple</Command>
12 <CommandCode>DIMPLE</CommandCode>
13 <DimensionFromStartEnd>0</DimensionFromStartEnd>
14 <CommandTolerance>0</CommandTolerance>
15 <CommandLength>0</CommandLength>
16 </CncCommandInfo>
17 <CncCommandInfo>
18 <Command>Swage</Command>
19 <CommandCode>SWAGE</CommandCode>
20 <DimensionFromStartEnd>0.0902230971</DimensionFromStartEnd>
21 <CommandTolerance>0</CommandTolerance>
22 <CommandLength>0.180446194</CommandLength>
23 </CncCommandInfo>
```

Change to NONE

That's it! Save the file and use it during CNC export:



Notice that prior to modifying the CNC type file, the dimples had been included in the exported CSV file:

```

Howick CNC Configuration CSV2test.xml | Wall_W-2-1.00.csv | Wall_W-2-1.00.csv
1 UNIT,MILLIMETRE
2 VERSION,2.0
3 PROFILE,DEFAULT_PROFILE
4 FRAMESET,W-2,Project Number
5 COMPONENT,BP-1,LABEL_INV,1,7200.00,C,89.00,41.30,1.00,none,0.00,20.65,7200.00,20.65,LIP_CUT,19.50,DIMPLE,20.65,DIMPLE,600.00,LIP_CUT
6 COMPONENT,HP-1,LABEL_INV,1,997.60,C,89.00,41.30,1.00,none,708.70,2140.65,1706.30,2140.65,LIP_CUT,19.50,NOTCH,19.50,DIMPLE,20.65
7 COMPONENT,HP-4,LABEL_INV,1,1261.30,C,89.00,1.00,1.00,none,2594.35,2120.50,3855.65,2120.50,LIP_CUT,19.50,NOTCH,19.50,LIP_CUT,124
8 COMPONENT,HP-5,LABEL_INV,1,1302.60,C,89.00,41.30,1.00,none,2573.70,2230.65,3876.30,2230.65,LIP_CUT,19.50,NOTCH,19.50,DIMPLE,20.
9 COMPONENT,HP-6,LABEL_INV,1,2065.20,C,89.00,41.30,1.00,none,4384.90,2140.65,6450.10,2140.65,LIP_CUT,19.50,NOTCH,19.50,DIMPLE,20.
10 COMPONENT,SBP-1,LABEL_NRM,1,682.50,C,89.00,41.30,1.00,none,3835.00,1250.00,4517.50,1250.00,LIP_CUT,19.50,NOTCH,19.50,DIMPLE,20.
11 COMPONENT,SBP-2,LABEL_NRM,1,750.00,C,89.00,41.30,1.00,none,0.00,1250.00,750.00,1250.00,LIP_CUT,19.50,NOTCH,19.50,DIMPLE,20.65,D
12 COMPONENT,SBP-3,LABEL_NRM,1,882.50,C,89.00,41.30,1.00,none,6317.50,1250.00,7200.00,1250.00,LIP_CUT,19.50,NOTCH,19.50,DIMPLE,20.
13 COMPONENT,SBP-4,LABEL_NRM,1,950.00,C,89.00,41.30,1.00,none,1665.00,1250.00,2615.00,1250.00,LIP_CUT,19.50,NOTCH,19.50,DIMPLE,20.
14 COMPONENT,SP-1,LABEL_NRM,1,997.60,C,89.00,41.30,1.00,none,708.70,879.35,1706.30,879.35,LIP_CUT,19.50,NOTCH,19.50,DIMPLE,20.65,D
15 COMPONENT,SP-2,LABEL_NRM,1,1302.60,C,89.00,41.30,1.00,none,2573.70,879.35,3876.30,879.35,LIP_CUT,19.50,NOTCH,19.50,DIMPLE,20.65
16 COMPONENT,SP-3,LABEL_NRM,1,2065.20,C,89.00,41.30,1.00,none,4384.90,879.35,6450.10,879.35,LIP_CUT,19.50,NOTCH,19.50,DIMPLE,20.65
17 COMPONENT,TP-1,LABEL_NRM,1,7200.00,C,89.00,41.30,1.00,none,0.00,2979.35,7200.00,2979.35,LIP_CUT,19.50,DIMPLE,20.65,DIMPLE,600.0
18 COMPONENT,BC-1,LABEL_NRM,1,898.00,C,89.00,41.30,1.00,none,4820.40,1.00,4820.40,899.00,DIMPLE,19.65,SWAGE,27.50,SWAGE,870.50,DIM
19 COMPONENT,BC-2,LABEL_NRM,1,898.00,C,89.00,41.30,1.00,none,5417.50,1.00,5417.50,899.00,DIMPLE,19.65,SWAGE,27.50,SWAGE,870.50,DIM
20 COMPONENT,BC-3,LABEL_NRM,1,898.00,C,89.00,41.30,1.00,none,6014.60,1.00,6014.60,899.00,DIMPLE,19.65,SWAGE,27.50,SWAGE,870.50,DIM
21 COMPONENT,BC-4,LABEL_NRM,1,898.00,C,89.00,41.30,1.00,none,2925.00,1.00,2925.00,899.00,DIMPLE,19.65,SWAGE,27.50,SWAGE,870.50,DIM
22 COMPONENT,BC-5,LABEL_NRM,1,898.00,C,89.00,41.30,1.00,none,3525.00,1.00,3525.00,899.00,DIMPLE,19.65,SWAGE,27.50,SWAGE,870.50,DIM
23 COMPONENT,BC-6,LABEL_NRM,1,898.00,C,89.00,41.30,1.00,none,1207.50,1.00,1207.50,899.00,DIMPLE,19.65,SWAGE,27.50,SWAGE,870.50,DIM
24 COMPONENT,HP-2,LABEL_NRM,1,1300.60,C,89.00,41.30,1.00,none,2574.70,2165.50,3875.30,2165.50,LIP_CUT,19.50,NOTCH,19.50,DIMPLE,19.
25 COMPONENT,HP-3,LABEL_NRM,1,1300.60,C,89.00,41.30,1.00,none,2574.70,2165.50,3875.30,2165.50,LIP_CUT,19.50,NOTCH,19.50,DIMPLE,19.

```

After modifying the CNC type file, there are no dimples in the newly created CSV file:

```

Howick CNC Configuration CSV2test.xml | Wall_W-2-1.00.csv | Wall_W-2-1.00.csv
1 UNIT,MILLIMETRE
2 VERSION,2.0
3 PROFILE,DEFAULT_PROFILE
4 FRAMESET,W-2,Project Number
5 COMPONENT,BP-1,LABEL_INV,1,7200.00,C,89.00,41.30,1.00,none,0.00,20.65,7200.00,20.65,LIP_CUT,19.50,LIP_CUT,600.00,LIP_CUT,729.35
6 COMPONENT,HP-1,LABEL_INV,1,997.60,C,89.00,41.30,1.00,none,708.70,2140.65,1706.30,2140.65,LIP_CUT,19.50,NOTCH,19.50,LIP_CUT,498.
7 COMPONENT,HP-4,LABEL_INV,1,1261.30,C,89.00,1.00,1.00,none,2594.35,2120.50,3855.65,2120.50,LIP_CUT,19.50,NOTCH,19.50,LIP_CUT,124
8 COMPONENT,HP-5,LABEL_INV,1,1302.60,C,89.00,41.30,1.00,none,2573.70,2230.65,3876.30,2230.65,LIP_CUT,19.50,NOTCH,19.50,LIP_CUT,35
9 COMPONENT,HP-6,LABEL_INV,1,2065.20,C,89.00,41.30,1.00,none,4384.90,2140.65,6450.10,2140.65,LIP_CUT,19.50,NOTCH,19.50,LIP_CUT,11
10 COMPONENT,SBP-1,LABEL_NRM,1,682.50,C,89.00,41.30,1.00,none,3835.00,1250.00,4517.50,1250.00,LIP_CUT,19.50,NOTCH,19.50,LIP_CUT,36
11 COMPONENT,SBP-2,LABEL_NRM,1,750.00,C,89.00,41.30,1.00,none,0.00,1250.00,750.00,1250.00,LIP_CUT,19.50,NOTCH,19.50,LIP_CUT,600.00
12 COMPONENT,SBP-3,LABEL_NRM,1,882.50,C,89.00,41.30,1.00,none,6317.50,1250.00,7200.00,1250.00,LIP_CUT,19.50,NOTCH,19.50,LIP_CUT,11
13 COMPONENT,SBP-4,LABEL_NRM,1,950.00,C,89.00,41.30,1.00,none,1665.00,1250.00,2615.00,1250.00,LIP_CUT,19.50,NOTCH,19.50,LIP_CUT,13
14 COMPONENT,SP-1,LABEL_NRM,1,997.60,C,89.00,41.30,1.00,none,708.70,879.35,1706.30,879.35,LIP_CUT,19.50,NOTCH,19.50,LIP_CUT,498.80
15 COMPONENT,SP-2,LABEL_NRM,1,1302.60,C,89.00,41.30,1.00,none,2573.70,879.35,3876.30,879.35,LIP_CUT,19.50,NOTCH,19.50,LIP_CUT,351.
16 COMPONENT,SP-3,LABEL_NRM,1,2065.20,C,89.00,41.30,1.00,none,4384.90,879.35,6450.10,879.35,LIP_CUT,19.50,NOTCH,19.50,LIP_CUT,111.
17 COMPONENT,TP-1,LABEL_NRM,1,7200.00,C,89.00,41.30,1.00,none,0.00,2979.35,7200.00,2979.35,LIP_CUT,19.50,LIP_CUT,600.00,LIP_CUT,72
18 COMPONENT,BC-1,LABEL_NRM,1,898.00,C,89.00,41.30,1.00,none,4820.40,1.00,4820.40,899.00,SWAGE,27.50,SWAGE,870.50
19 COMPONENT,BC-2,LABEL_NRM,1,898.00,C,89.00,41.30,1.00,none,5417.50,1.00,5417.50,899.00,SWAGE,27.50,SWAGE,870.50
20 COMPONENT,BC-3,LABEL_NRM,1,898.00,C,89.00,41.30,1.00,none,6014.60,1.00,6014.60,899.00,SWAGE,27.50,SWAGE,870.50
21 COMPONENT,BC-4,LABEL_NRM,1,898.00,C,89.00,41.30,1.00,none,2925.00,1.00,2925.00,899.00,SWAGE,27.50,SWAGE,870.50
22 COMPONENT,BC-5,LABEL_NRM,1,898.00,C,89.00,41.30,1.00,none,3525.00,1.00,3525.00,899.00,SWAGE,27.50,SWAGE,870.50
23 COMPONENT,BC-6,LABEL_NRM,1,898.00,C,89.00,41.30,1.00,none,1207.50,1.00,1207.50,899.00,SWAGE,27.50,SWAGE,870.50
24 COMPONENT,HP-2,LABEL_NRM,1,1300.60,C,89.00,41.30,1.00,none,2574.70,2165.50,3875.30,2165.50,LIP_CUT,19.50,NOTCH,19.50,LIP_CUT,12
25 COMPONENT,HP-3,LABEL_NRM,1,1300.60,C,89.00,41.30,1.00,none,2574.70,2165.50,3875.30,2165.50,LIP_CUT,19.50,NOTCH,19.50,LIP_CUT,12

```

Important!

DimensionFromStartEnd defines the distance from element start/end and is measured in *feet*.

1 ft = 12 in = 30,48 cm.

```

<CncCommandInfo>
  <Command>Swage</Command>
  <CommandCode>SWAGE</CommandCode>
  <DimensionFromStartEnd>0.0902230971</DimensionFromStartEnd>
  <CommandTolerance>0</CommandTolerance>
  <CommandLength>0.180446194</CommandLength>
  <DefaultSeparator>;</DefaultSeparator>
  <DefaultProfile>my profile</DefaultProfile>
</CncCommandInfo>

```

With **CommandLength** you can extend the command length of a tool. If it is too short, **CNC Exporter** will use this command two or more times.

```

<CncCommandInfo>
  <Command>Swage</Command>
  <CommandCode>SWAGE</CommandCode>
  <DimensionFromStartEnd>0.0902230971</DimensionFromStartEnd>
  <CommandTolerance>0</CommandTolerance>
  <CommandLength>0.180446194</CommandLength>
  <DefaultSeparator>;</DefaultSeparator>
</CncCommandInfo>
  <DefaultProfile>my profile</DefaultProfile>
</CncCommandInfo>

```

Additional Information in the XML file

You can add additional information into the XML file:

```
<DefaultProfile>DEFAULT_PROFILE_1</DefaultProfile>
```

Change profile name.

```

1 <?xml version="1.0" ?>
2 <CncConfig xmlns:xsd="http://www.w3.org/2001/XMLSchema" xmlns:xsi="http://www
3 <GUID>402F3CFD-BDF9-4781-8B5B-3375929E79A3</GUID>
4 <ConfigurationName>Howick CNC Configuration CSV2 test</ConfigurationName>
5 <DefaultSeparator>;</DefaultSeparator>
6 <DefaultProfile>Profile name</DefaultProfile>
7 <IsPedefinedConfig>>false</IsPedefinedConfig>
8 <AdditionalCutParameter />
9 <EndToEndJoinOnSameLine>>false</EndToEndJoinOnSameLine>
10 <NumberOfScrewsCoeficient>1</NumberOfScrewsCoeficient>
11 <CncCommands>
12 <CncCommandInfo>
13 <Command>Dimple</Command>
14 <CommandCode>DIMPLE</CommandCode>
15 <DimensionFromStartEnd>0</DimensionFromStartEnd>
16 <CommandTolerance>0</CommandTolerance>
17 <CommandLength>0</CommandLength>
18 </CncCommandInfo>
19 <CncCommandInfo>
20 <Command>Swage</Command>
21 <CommandCode>SWAGE</CommandCode>

```

Result in the exported file:

```

1 UNIT;MILLIMETRE
2 VERSION,2.0
3 PROFILE;Profile name
4 FRAMESET;W-2;Project Number
5 COMPONENT;BP-1;LABEL_INV;1;7200.00;C;89.00;41.30;1.00;none,0.00,20.65,7200.00,20.65;LIP_CUT;19.50;LIP
6 COMPONENT;HP-1;LABEL_INV;1;997.60;C;89.00;41.30;1.00;none,708.70,2140.65,1706.30,2140.65;LIP_CUT;19.5
7 COMPONENT;HP-3;LABEL_INV;1;1261.30;C;89.00;1.00;1.00;none,2594.35,2120.50,3855.65,2120.50;LIP_CUT;19.
8 COMPONENT;HP-4;LABEL_INV;1;1302.60;C;89.00;41.30;1.00;none,2573.70,2230.65,3876.30,2230.65;LIP_CUT;19
9 COMPONENT;HP-5;LABEL_INV;1;2065.20;C;89.00;41.30;1.00;none,4384.90,2140.65,6450.10,2140.65;LIP_CUT;19
10 COMPONENT;SBP-1;LABEL_NRM;1;682.50;C;89.00;41.30;1.00;none,3835.00,1250.00,4517.50,1250.00;LIP_CUT;19
11 COMPONENT;SBP-2;LABEL_NRM;1;750.00;C;89.00;41.30;1.00;none,0.00,1250.00,750.00,1250.00;LIP_CUT;19.50;
12 COMPONENT;SBP-3;LABEL_NRM;1;882.50;C;89.00;41.30;1.00;none,6317.50,1250.00,7200.00,1250.00;LIP_CUT;19
13 COMPONENT;SBP-4;LABEL_NRM;1;950.00;C;89.00;41.30;1.00;none,1665.00,1250.00,2615.00,1250.00;LIP_CUT;19
14 COMPONENT;SP-1;LABEL_NRM;1;997.60;C;89.00;41.30;1.00;none,708.70,879.35,1706.30,879.35;LIP_CUT;19.50;

```

<DefaultSeparator>;</DefaultSeparator>

Changes the punctuation mark.

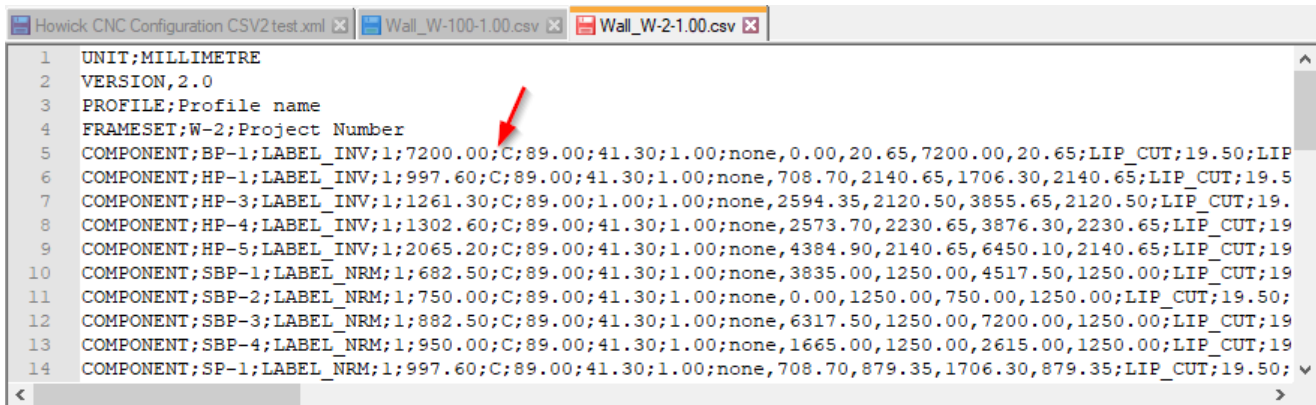


```

1  <?xml version="1.0"?>
2  <CncConfig xmlns:xsd="http://www.w3.org/2001/XMLSchema" xmlns:xsi="http://www
3  <GUID>402F3CFD-BDF9-4781-8B5B-3375929E79A3</GUID>
4  <ConfigurationName>Howick CNC Configuration CSV2 test</ConfigurationName>
5  <DefaultSeparator>;</DefaultSeparator>
6  <DefaultProfile>Profile name</DefaultProfile>
7  <IsPedefinedConfig>>false</IsPedefinedConfig>
8  <AdditionalCutParameter />
9  <EndToEndJoinOnSameLine>>false</EndToEndJoinOnSameLine>
10 <NumberOfScrewsCoeficient>1</NumberOfScrewsCoeficient>
11 <CncCommands>
12 <CncCommandInfo>
13 <Command>Dimple</Command>
14 <CommandCode>DIMPLE</CommandCode>
15 <DimensionFromStartEnd>0</DimensionFromStartEnd>
16 <CommandTolerance>0</CommandTolerance>
17 <CommandLength>0</CommandLength>
18 </CncCommandInfo>
19 <CncCommandInfo>
20 <Command>Swage</Command>
21 <CommandCode>SWAGE</CommandCode>

```

Result:



```

1  UNIT;MILLIMETRE
2  VERSION;2.0
3  PROFILE;Profile name
4  FRAMESET;W-2;Project Number
5  COMPONENT;BP-1;LABEL_INV;1;7200.00;C;89.00;41.30;1.00;none,0.00,20.65,7200.00,20.65;LIP_CUT;19.50;LIP
6  COMPONENT;HP-1;LABEL_INV;1;997.60;C;89.00;41.30;1.00;none,708.70,2140.65,1706.30,2140.65;LIP_CUT;19.5
7  COMPONENT;HP-3;LABEL_INV;1;1261.30;C;89.00;1.00;1.00;none,2594.35,2120.50,3855.65,2120.50;LIP_CUT;19.
8  COMPONENT;HP-4;LABEL_INV;1;1302.60;C;89.00;41.30;1.00;none,2573.70,2230.65,3876.30,2230.65;LIP_CUT;19
9  COMPONENT;HP-5;LABEL_INV;1;2065.20;C;89.00;41.30;1.00;none,4384.90,2140.65,6450.10,2140.65;LIP_CUT;19
10 COMPONENT;SBP-1;LABEL_NRM;1;682.50;C;89.00;41.30;1.00;none,3835.00,1250.00,4517.50,1250.00;LIP_CUT;19
11 COMPONENT;SBP-2;LABEL_NRM;1;750.00;C;89.00;41.30;1.00;none,0.00,1250.00,750.00,1250.00;LIP_CUT;19.50;
12 COMPONENT;SBP-3;LABEL_NRM;1;882.50;C;89.00;41.30;1.00;none,6317.50,1250.00,7200.00,1250.00;LIP_CUT;19
13 COMPONENT;SBP-4;LABEL_NRM;1;950.00;C;89.00;41.30;1.00;none,1665.00,1250.00,2615.00,1250.00;LIP_CUT;19
14 COMPONENT;SP-1;LABEL_NRM;1;997.60;C;89.00;41.30;1.00;none,708.70,879.35,1706.30,879.35;LIP_CUT;19.50;

```

Make a link between CNC configuration and wall/floor/roof type

You can write the CNC configuration name to the wall/floor/roof type in the project. To do that, find the **CNC Export Configuration** parameter and write the CNC configuration name from the predefined list. In such cases, different walls/floors/roofs can be exported to different CNC machines or using different settings. Instead of switching between default CNC types, just write the CNC export configuration here, and export all elements from the project at once.

The screenshot displays the Revit interface with the 'Type Properties' dialog open for a wall. The dialog is divided into several sections: 'Family' (System Family: Basic Wall), 'Type' (Ext - 16+89+16 C+C_CH H4300), and 'Type Parameters'. The 'Type Parameters' section contains a table of parameters and their values.

Parameter	Value
Construction	
Structure	Edit...
Wrapping at Inserts	Do not wrap
Wrapping at Ends	None
Width	121.0
Function	Exterior
Smart Assembly Configuration	
Ignore Disallowed Joint Connection	<input checked="" type="checkbox"/>
CNC Export Configuration	Howick CNC Configuration CSV2 test
Graphics	
Coarse Scale Fill Pattern	<Solid fill>
Coarse Scale Fill Color	RGB 192-192-192
Materials and Finishes	
Structural Material	Metal Stud Layer
Analytical Properties	
Heat Transfer Coefficient (U)	0.2613 W/(m ² ·K)
Thermal Resistance (R)	3.8267 (m ² ·K)/W
Thermal mass	3.10 kJ/K
Absorptance	0.700000

At the bottom of the dialog, there are buttons for '<< Preview', 'OK', 'Cancel', and 'Apply'. A red arrow points from the 'CNC Export Configuration' dropdown menu to the 'Edit Type' button in the 'Walls (1)' panel on the left side of the interface.