

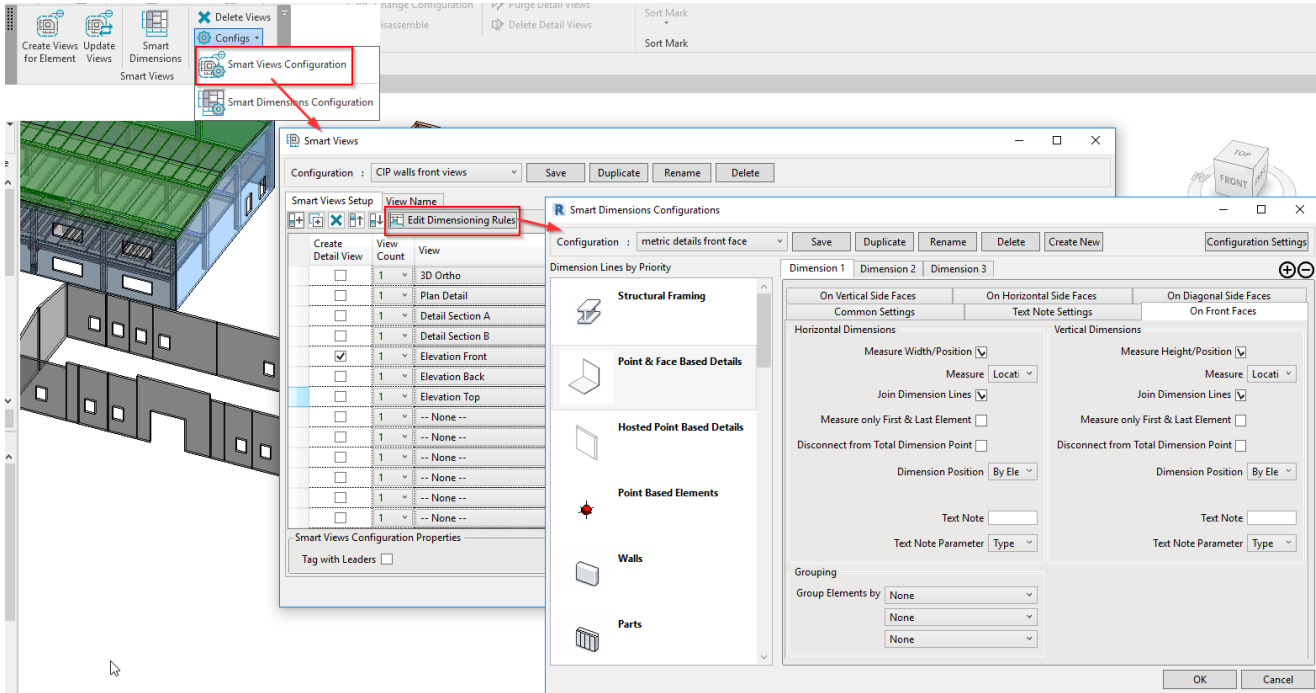
Smart Views - Smart Dimensions

Modified on: Thu, 3 Jun, 2021 at 2:19 PM

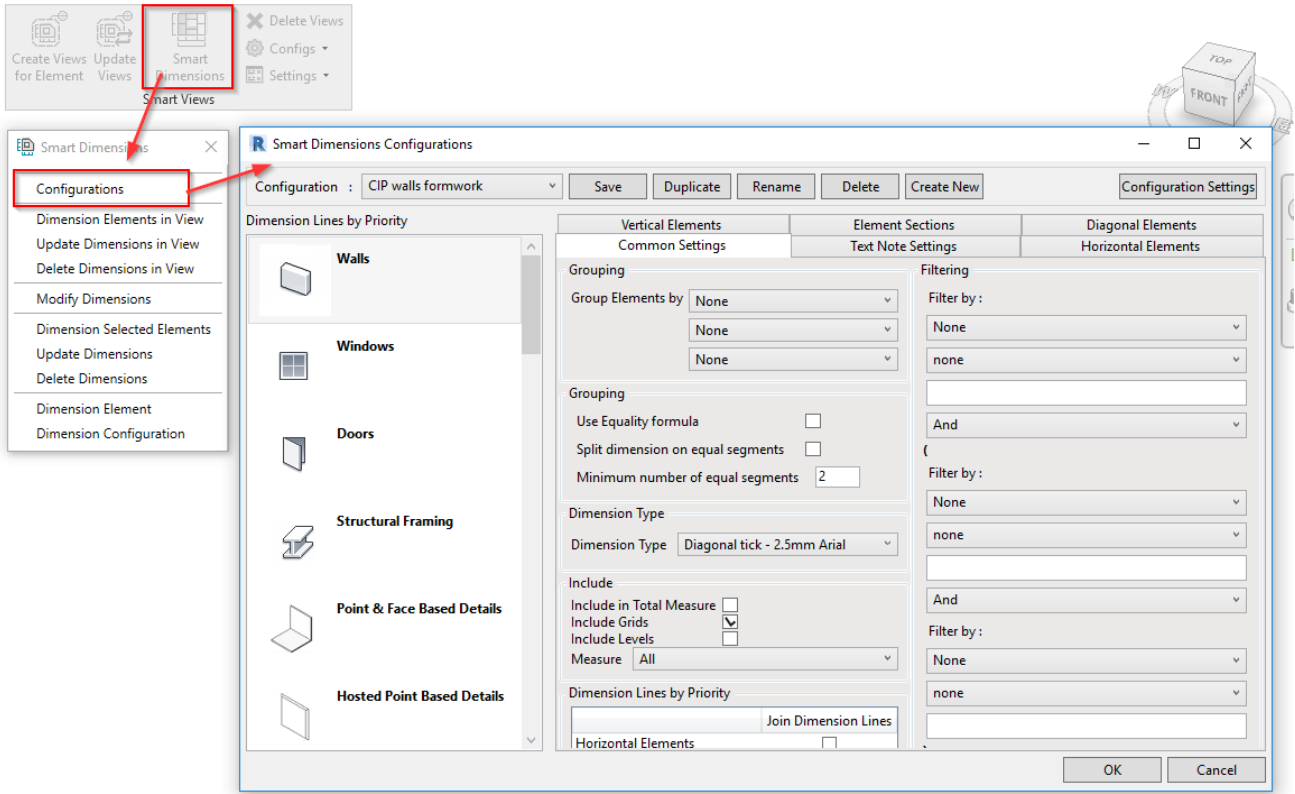
Smart Dimensions is a tool used in AGACAD's Wood/Metal Framing, Precast Concrete, and Smart Views applications to automatically get dimensions of elements in the view. The tool may be used while creating views automatically through the configurations of those solutions, or it could be applied in any user-created Revit view.

Read more about Smart Dimensions here. (<https://helpdesk.agacad.com/support/solutions/folders/44001221562>)

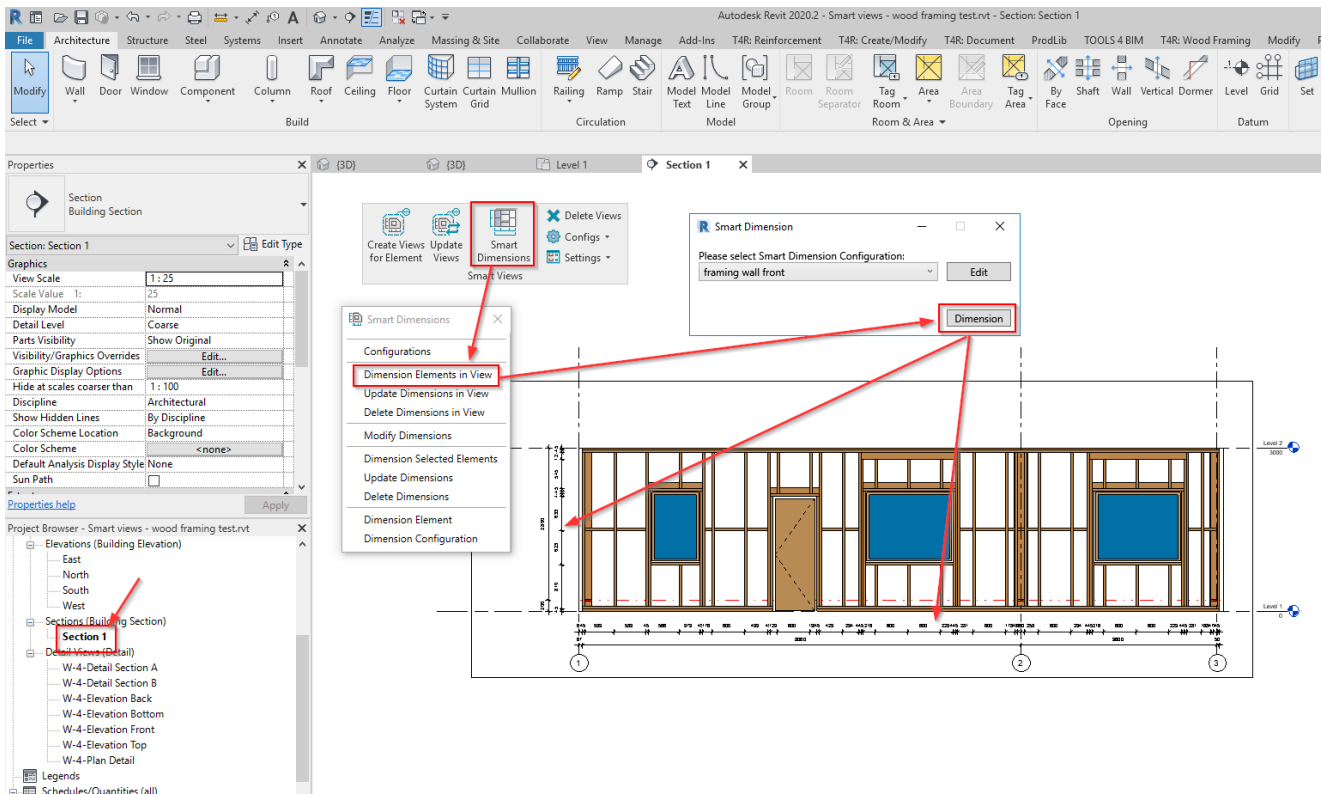
You can access Smart Dimensions' configurations through Smart Views' configuration window:



Alternatively, you can go straight to Smart Dimensions menu and configurations:



Once you have prepared the configuration, you can apply it to any view:



Alternatively, you can add the configuration that you set in Smart Dimensions to Smart Views' configuration, and it will be applied to selected views while using the Create Views command in Smart Views.

Smart Views Configuration: Wood framing wall front view

Buttons: Save, Duplicate, Rename, Delete

Smart Views Setup: View Name, Edit Dimensioning Rules

Create Detail View	View Count	View	View Type	View Name	View Template	Dimensioning Rule	Tag All
<input type="checkbox"/>	1	3D Ortho	-- No Template --	3D Ortho	-- No Template --	-- None --	<input type="checkbox"/>
<input type="checkbox"/>	1	Plan Detail	-- No Template --	Horizontal section	-- No Template --	-- None --	<input type="checkbox"/>
<input type="checkbox"/>	1	Detail Section Left (B)	-- No Template --	Section B-B	-- No Template --	-- None --	<input type="checkbox"/>
<input checked="" type="checkbox"/>	1	Elevation Front	-- No Template --	Front	M25 WF	framing wall front	<input type="checkbox"/>
<input type="checkbox"/>	1	-- None --	-- No Template --	-- None --	-- No Template --	-- None --	<input type="checkbox"/>
<input type="checkbox"/>	1	-- None --	-- No Template --	-- None --	-- No Template --	-- None --	<input type="checkbox"/>

Properties Panel: Basic Wall, Ext 1VerSiding - VS22-HN45-FR-SFR45-SH12

Walls (2) Edit Type

- Top Constraint: Up to level: Level 2
- Unconnected Height: 3000.0
- Top Offset: 0.0
- Top is Attached:
- Top Extension Distance: 0.0
- Room Bounding:
- Related to Mass:

Construction

- Assembly Created-Updated
- Assembly Mass
- SDC
- Element Mass
- Framing Configuration
- Reverse Start/End Connecti...:
- Unique Frame in Identical ...:

Project Browser - Smart views - wood framing test.rvt

- Elevations (Building Elevation)
 - East
 - North
 - South
 - West
- Sections (Building Section)
 - Section 1
- Legends
- Schedules/Quantities (all)
 - Wall Assembly Material Takeoff

Smart Views Context Menu: Create Views for Element, Update Views, Smart Dimensions, Delete Views, Configs, Settings

Detail View
Detail

Detail View: W-4-Front
Edit Type

Visibility/Graphics Overrides Edit...

Graphic Display Options Edit...

Hide at scales coarser than 1:100 Edit...

Discipline Structural

Show Hidden Lines All

Color Scheme Location Background

Color Scheme <none>

Default Analysis Display Style None

Sun Path

Extents

Crop View

Crop Region Visible

Annotation Crop

Far Clipping Clip without line

Far Clip Offset 853.6

Properties help Apply

Project Browser - Smart views - wood framing test.rvt

- Elevations (Building Elevation)
 - East
 - North
 - South
 - West
- Sections (Building Section)
 - Section 1
- Detail Views (Detail)
 - W-2-Front
 - W-4-Front**
- Legends
- Schedules/Quantities (all)
 - Wall Assembly Material Takeoff
 - Wall Assembly Part List
 - Wall Connection Schedule
 - Wall Framing Modules
 - Wall Framing Schedule
 - Wall Framing Structural Connections - Mark Definition
 - Wall Framing Structural Framing - Mark Definition Sche
 - Wall Sheathing Schedule

Create Views for Element Views Smart Views

Update Views Smart Views

Delete Views

Configs Settings

