

SHOP DRAWINGS – Drawing Configuration – Sheets

Modified on: Wed, 7 Aug, 2019 at 3:06 PM

Sheets

The screenshot displays the 'Wall+' ribbon with various tools for managing wall assemblies. The 'Create Assembly' dropdown menu is open, with 'Drawing Configuration' highlighted. Below the ribbon, the 'Sheets' tab is active, showing a 'Create Sheet Views' section with a table and 'Sheet View Settings'.

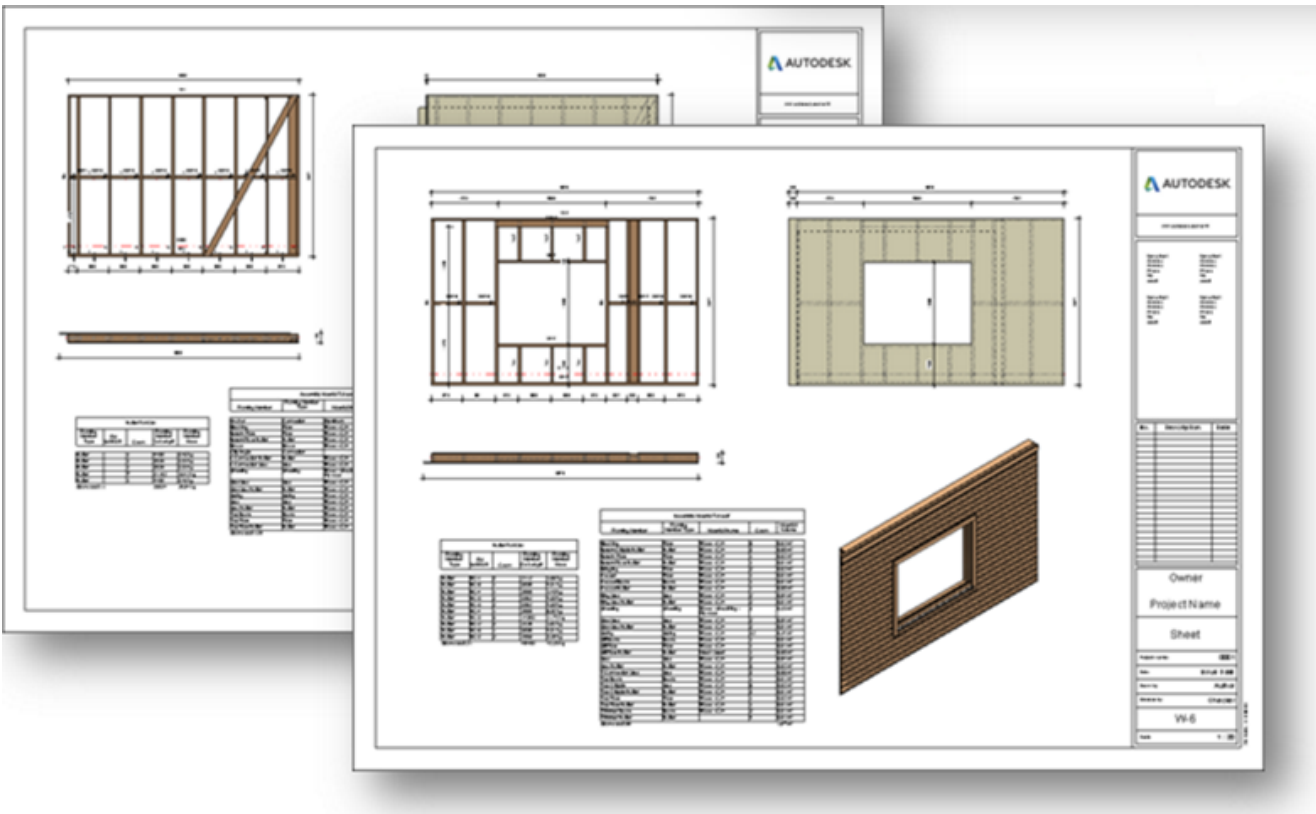
Create View	View	View Name	Sheet Number Postfix	Sheet Template	Titleblock
<input checked="" type="checkbox"/>	Sheet	Frame	-2	W-4 -2 - Frame	A0 metric : A0 metric
<input checked="" type="checkbox"/>	Sheet	Secondary Frame	-3	W-4 -3 - Secondary Frame	A0 metric : A0 metric
<input checked="" type="checkbox"/>	Sheet	Assembly	-1	W-4 -1 - Assembly	A0 metric : A0 metric

Sheet View Settings

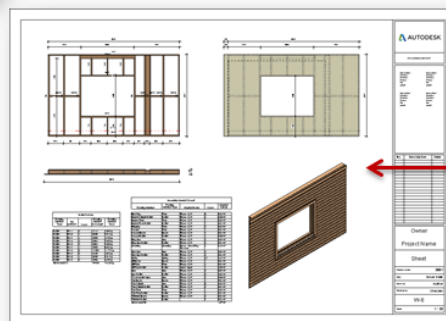
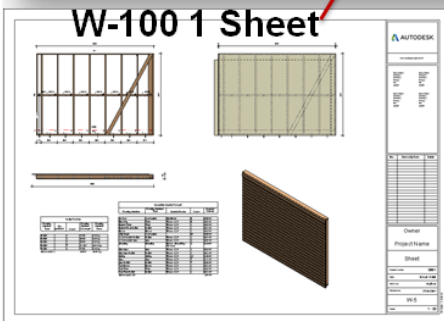
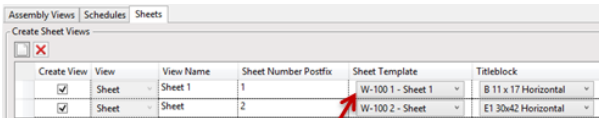
Sheet Number: Mark

Wall+ creates sheets in the wall assembly using predefined settings.

Titleblock – select the titleblock family to apply to assemblies. The titleblock family list comes from your current project.



Create first assembly → add views to the sheet manually → open **Drawing Config** → **Sheets** → select a sheet to be a template for other walls.



Newly created assembly sheet