

Dato :	08.11.05	Sign: tb
Sist rev:	24.9.07	Sign: tb
Doc. Nr:	K4-11E	Sign: tb
Side 1 av 2		

## Erecting BCC



E1. Preparation of the beam before lifting. Safety rope is rearrange to be able to pull out the knife.



E2. -and fixed to the top of the beam.



E3. Mounting the lifting hooks.



E4. The beam is lifted in place, and supported.



E5. Pull the double rope, until the knife is in the right position.



E6. Insert the backing in the joint between the beam and the column.

Dato :	08.11.05	Sign: tb
Sist rev:	24.9.07	Sign: tb
Doc. Nr:	K4-11E	Sign: tb
Side 2 av 2		

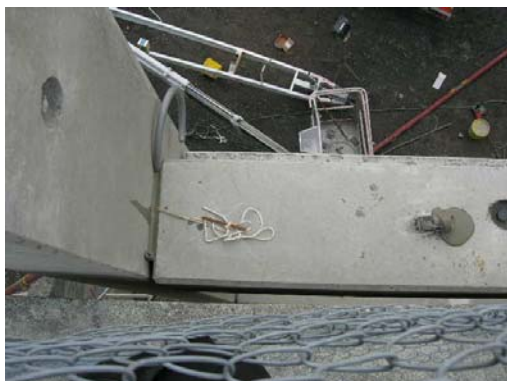
## Erecting BCC



E7. Cut the rope, and pull it out.



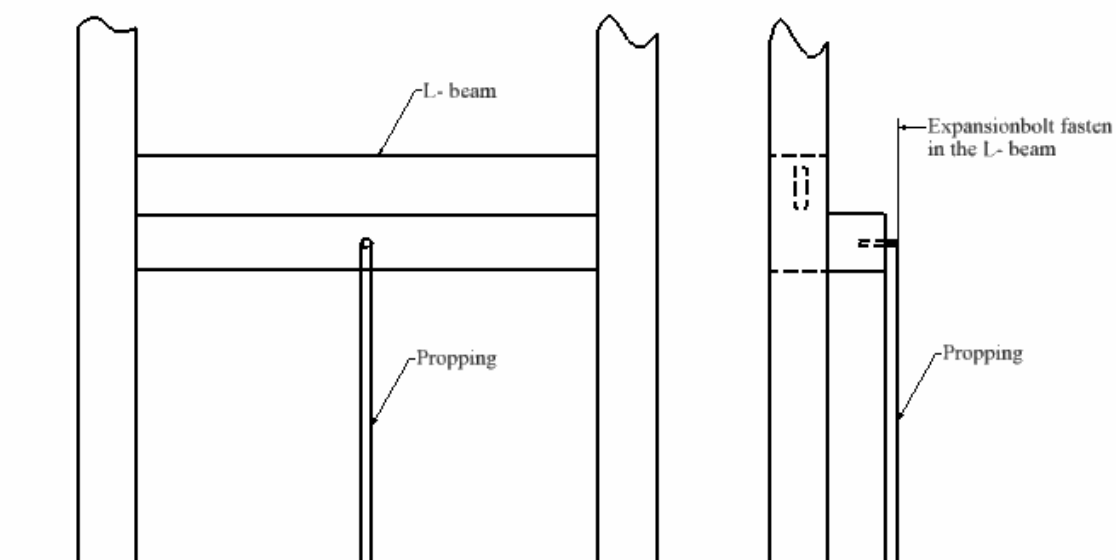
E8. Filling the joint with mortar (eg. "Nonset").



E9. Filling the beam unit with mortar.



E10. The erection of the beam is finish.



An alternative way to prop a L- beam.