

Date :	08.08.95	Sign: bot
Last rev:	03.06.09	Sign: tb
Doc. No:	K4-10/10E	Sign: tb
Page 1 of 12		

## Main dimensions for BSF units

### BSF 150/20

(The dimensions shown in these figures shall not be used as reference dimensions when locating the units in the formwork)

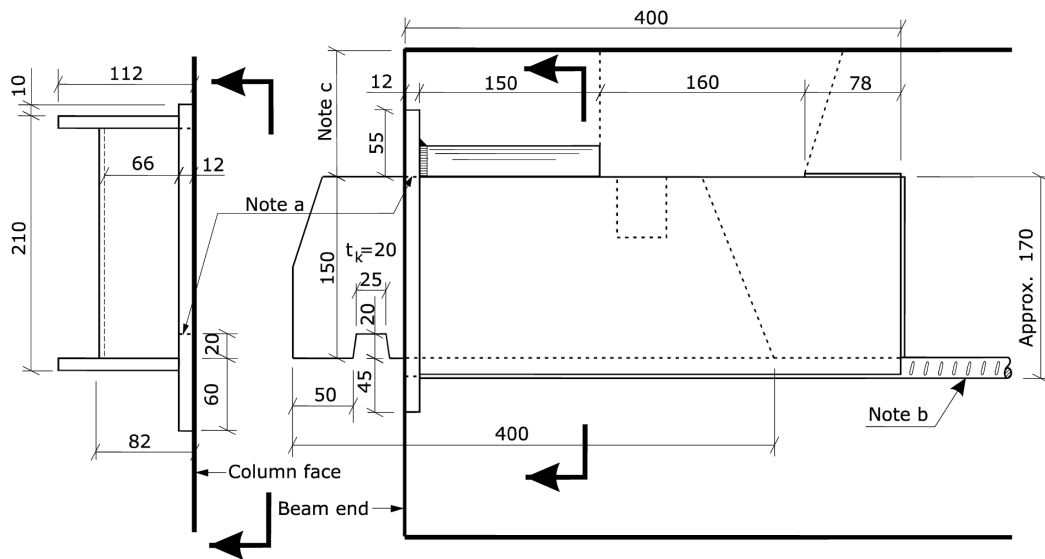


Figure 10.1 BSF 150/20, column and beam units

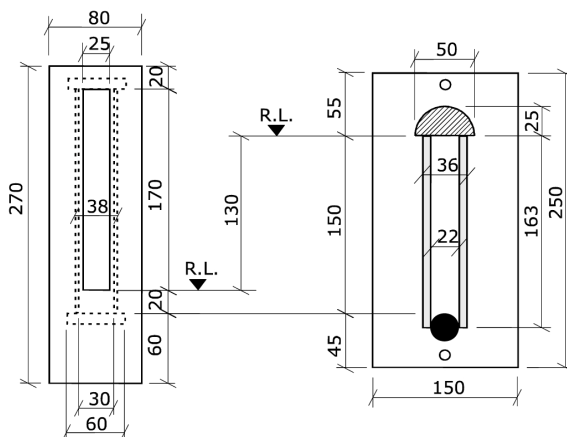


Figure 10.2 BSF 150/20, sections

The dimensions given are for the use of the structural engineer. The production tolerances and provided clearances in the units are not reflected in these figures.

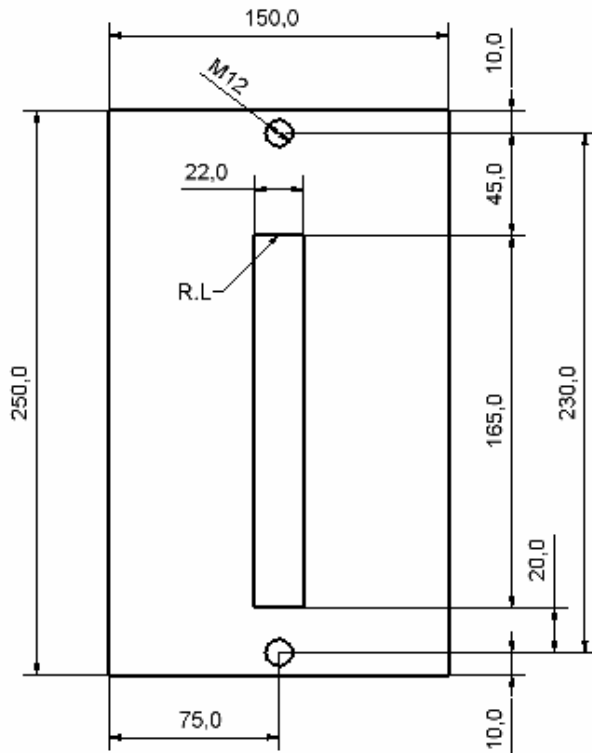
Dimensions for the beam and column front plate see next page.

- Note a: The arrows indicate the reference levels used in the design (marked R.L. on the sections). These levels are governing the placing of the units in the forms. See Memo 15.
- Note b: The beam units are manufactured without the horizontal bar at the bottom. See Memo 16.
- Note c: This dimension can be chosen, and is usually standardized by the precaster. The minimum dimension depends upon the size of the stirrups and requirements to concrete cover. 80 mm is recommended for this distance.

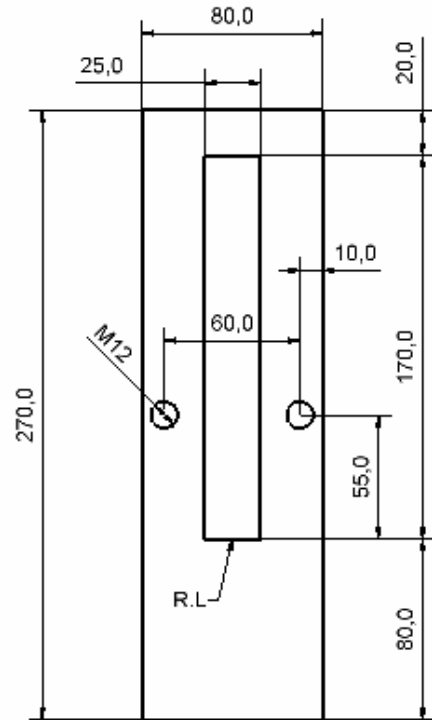
Date :	08.08.95	Sign: bot
Last rev:	03.06.09	Sign: tb
Doc. No:	K4-10/10E	Sign: tb
Page 2 of 12		

## Main dimensions for BSF units

### BSF 150/20



Standard beam front plate



Recommended hole picture for the column front plate.

Date :	08.08.95	Sign: bot
Last rev:	03.06.09	Sign: tb
Doc. No:	K4-10/10E	Sign: tb
Page 3 of 12		

## Main dimensions for BSF units

### BSF 200/20

(The dimensions shown in these figures shall not be used as reference dimensions when locating the units in the formwork)

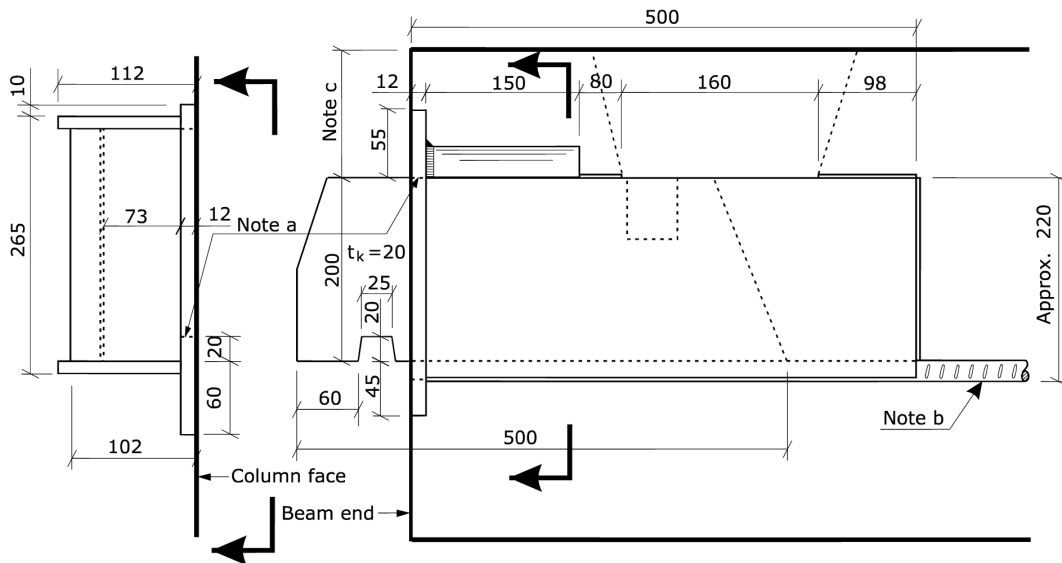


Figure 10.3 BSF 200/20, column and beam units

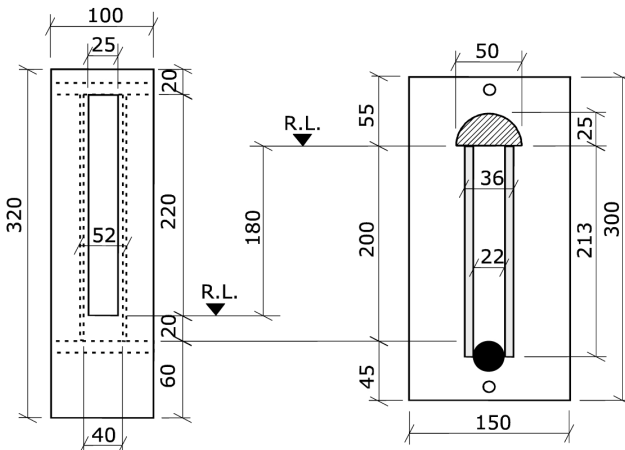


Figure 10.4 BSF 200/20, sections

The dimensions given are for the use of the structural engineer. The production tolerances and provided clearances in the units are not reflected in these figures.

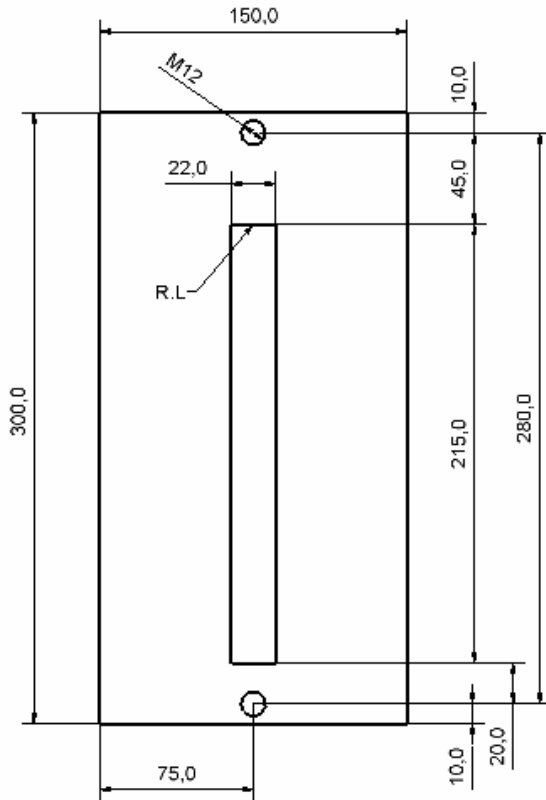
Dimensions for the beam and column front plate see next page.

- Note a: The arrows indicate the reference levels used in the design (marked R.L. on the sections). These levels are governing the placing of the units in the forms. See Memo 15.
- Note b: The beam units are manufactured without the horizontal bar at the bottom. See Memo 16.
- Note c: This dimension can be chosen, and is usually standardized by the precaster. The minimum dimension depends upon the size of the stirrups and requirements to concrete cover. 100 mm is recommended for this distance.

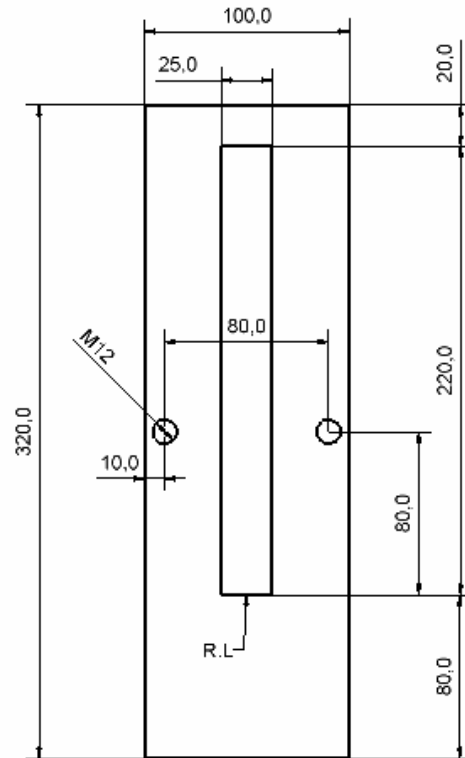
Date :	08.08.95	Sign: bot
Last rev:	03.06.09	Sign: tb
Doc. No:	K4-10/10E	Sign: tb
Page 4 of 12		

## Main dimensions for BSF units

### BSF 200/20



Standard beam front plate



Recommended hole picture for the column front plate.

Date :	08.08.95	Sign: bot
Last rev:	03.06.09	Sign: tb
Doc. No:	K4-10/10E	Sign: tb
Page 5 of 12		

## Main dimensions for BSF units

### BSF 200/30

(The dimensions shown in these figures shall not be used as reference dimensions when locating the units in the formwork)

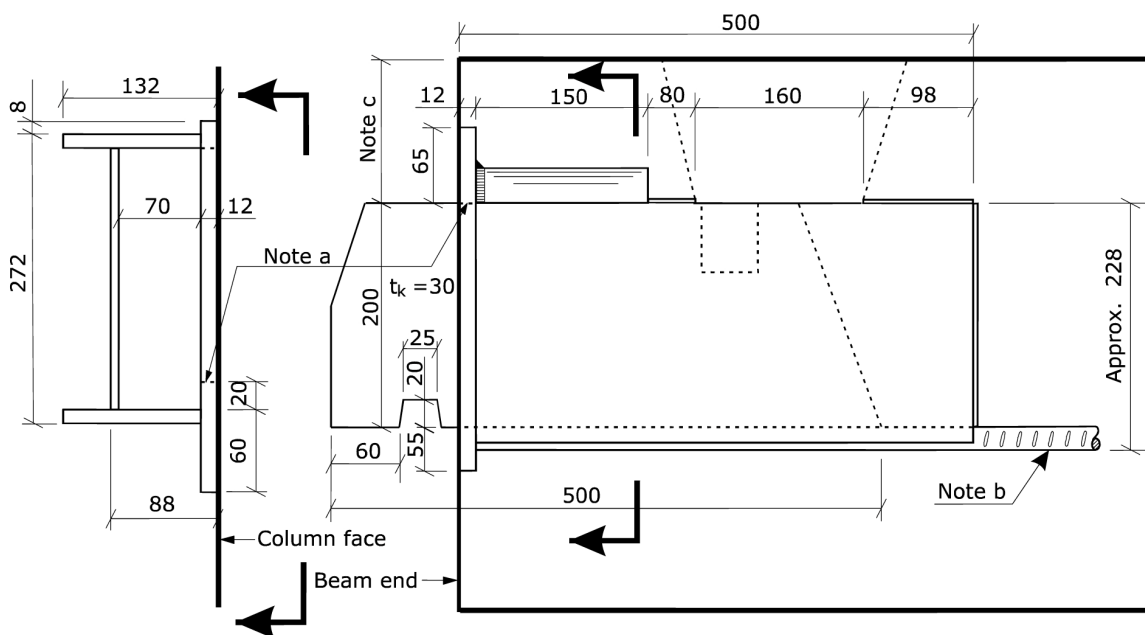


Figure 10.5 BSF 200/30, column and beam units

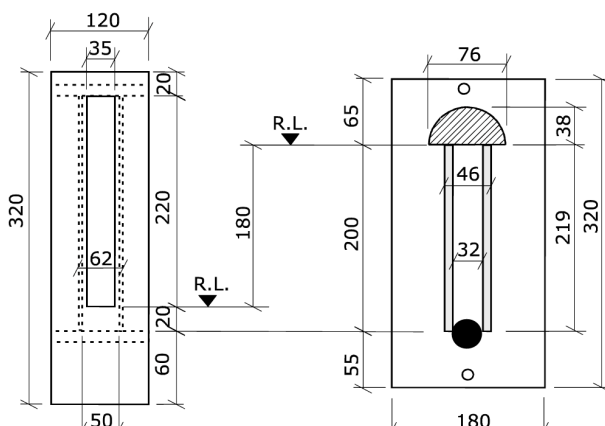


Figure 10.6 BSF 200/30, sections

The dimensions given are for the use of the structural engineer. The production tolerances and provided clearances in the units are not reflected in these figures.

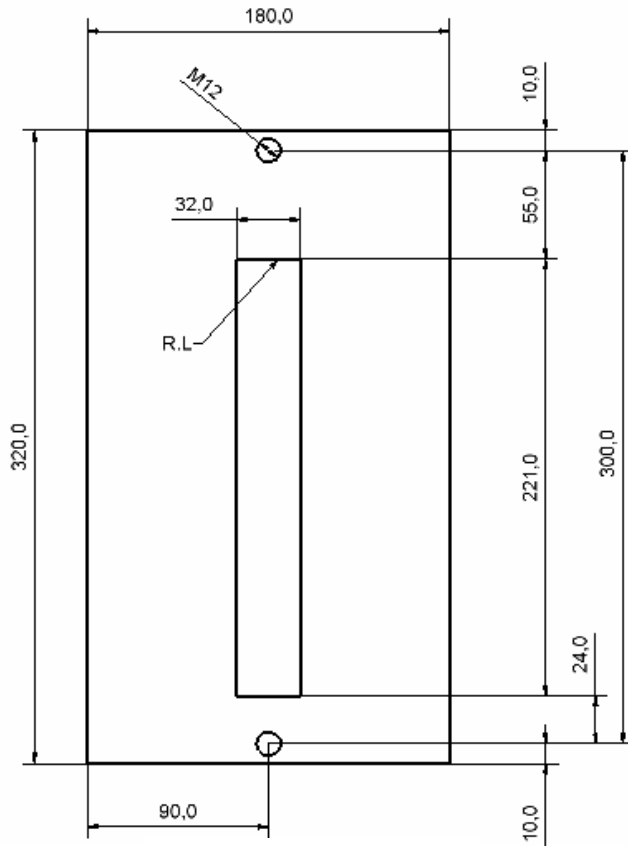
Dimensions for the beam and column front plate see next page.

- Note a: The arrows indicate the reference levels used in the design (marked R.L. on the sections). These levels are governing the placing of the units in the forms. See Memo 15.
- Note b: The beam units are manufactured without the horizontal bar at the bottom. See Memo 16.
- Note c: This dimension can be chosen, and is usually standardized by the precaster. The minimum dimension depends upon the size of the stirrups and requirements to concrete cover. 100 mm is recommended for this distance.

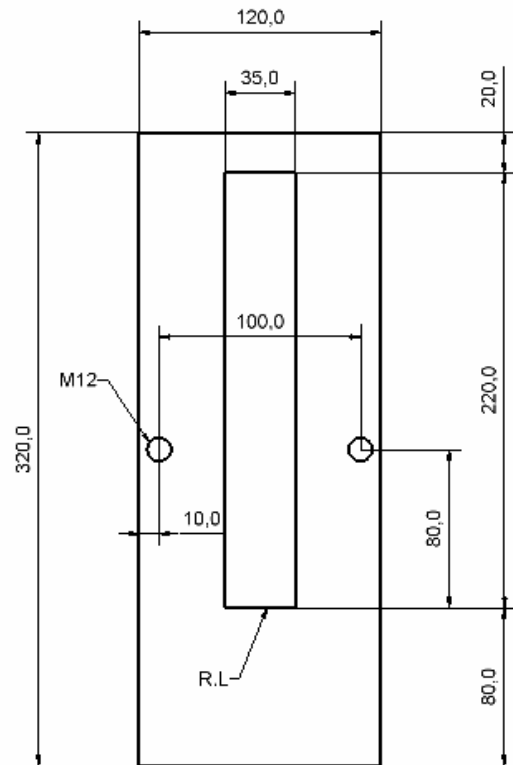
Date :	08.08.95	Sign: bot
Last rev:	03.06.09	Sign: tb
Doc. No:	K4-10/10E	Sign: tb
Page 6 of 12		

## Main dimensions for BSF units

### BSF 200/30



Standard beam front plate



Recommended hole picture for the column front plate.

Date :	08.08.95	Sign: bot
Last rev:	03.06.09	Sign: tb
Doc. No:	K4-10/10E	Sign: tb
Page 7 of 12		

## Main dimensions for BSF units

### BSF 200/40

(The dimensions shown in these figures shall not be used as reference dimensions when locating the units in the formwork)

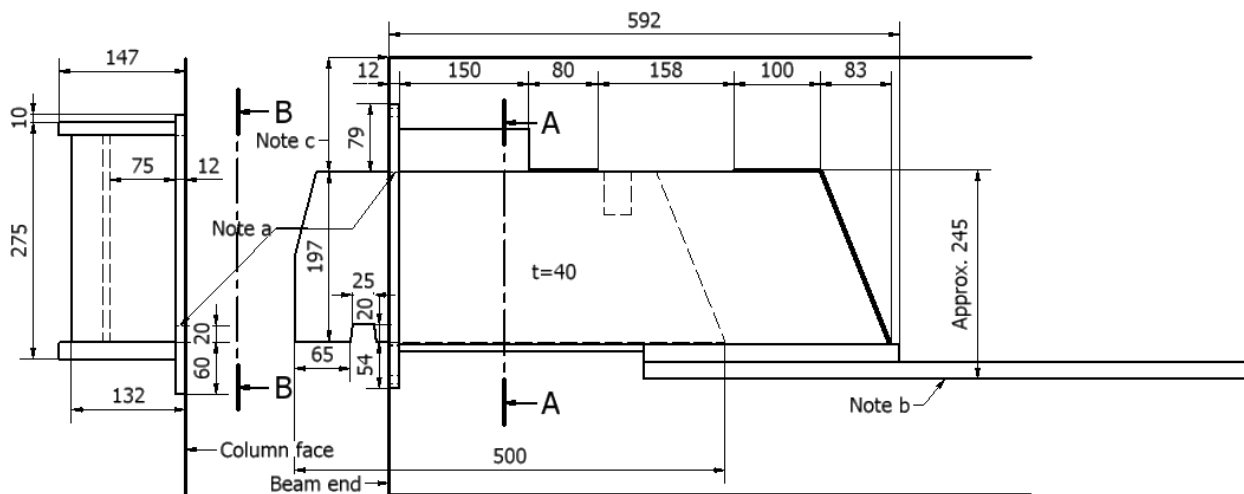


Figure 10.7 BSF 200/40, column and beam units

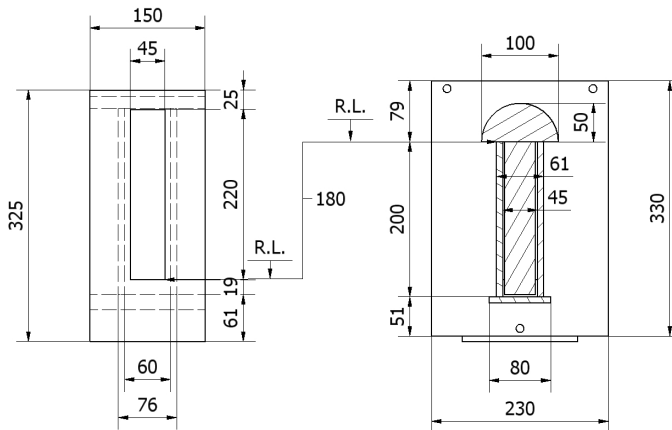


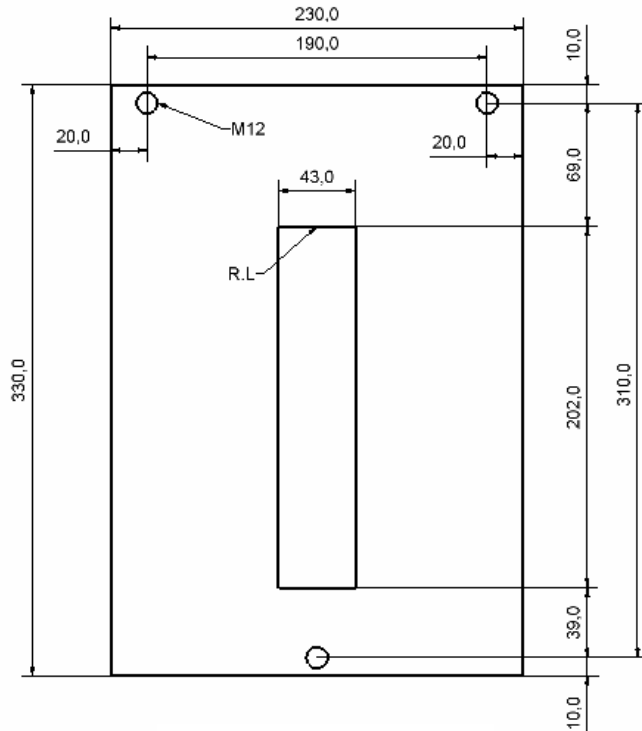
Figure 10.8 BSF 200/40, sections

- Note a: The arrows indicate the reference levels used in the design (marked R.L. on the sections). These levels are governing the placing of the units in the forms. See Memo 15.
- Note b: The beam units are manufactured without the horizontal bar at the bottom. See Memo 16.
- Note c: This dimension can be chosen, and is usually standardized by the precaster. The minimum dimension depends upon the size of the stirrups and requirements to concrete cover. 120 mm is recommended for this distance.

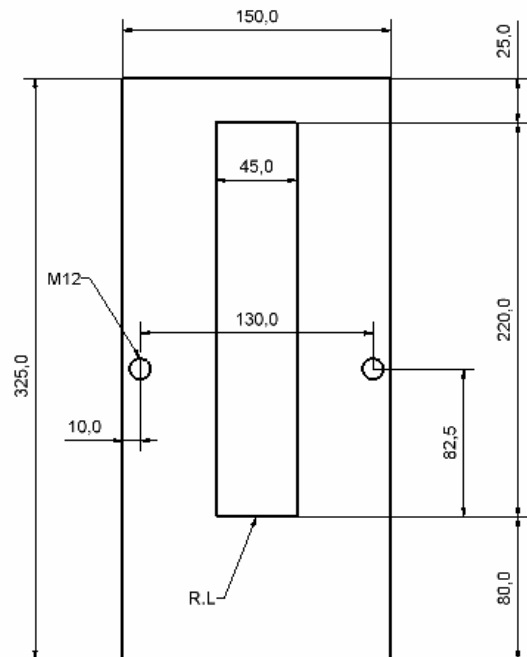
Date :	08.08.95	Sign: bot
Last rev:	03.06.09	Sign: tb
Doc. No:	K4-10/10E	Sign: tb
Page 8 of 12		

## Main dimensions for BSF units

### BSF 200/40



Standard beam front plate



Recommended hole picture for the column front plate.



Date :	08.08.95	Sign: bot
Last rev:	03.06.09	Sign: tb
Doc. No:	K4-10/10E	Sign: tb
Page 9 of 12		

## Main dimensions for BSF units

### BSF 200/50

(The dimensions shown in these figures shall not be used as reference dimensions when locating the units in the formwork)

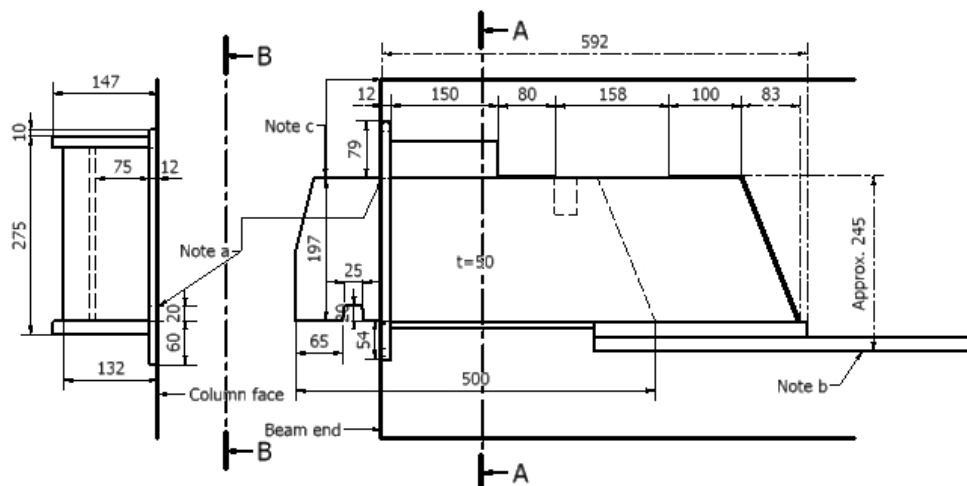


Figure 10.9 BSF 200/50, column and beam units

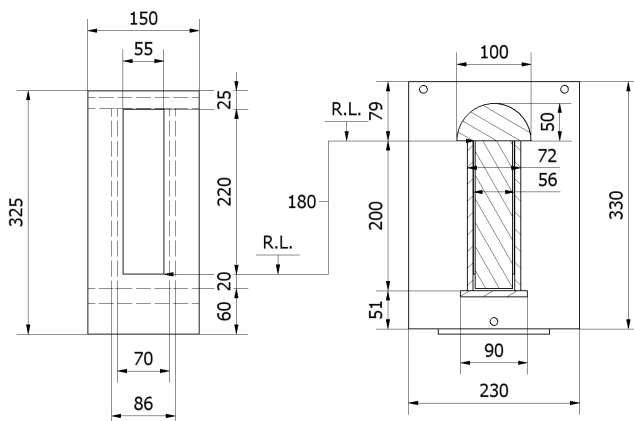


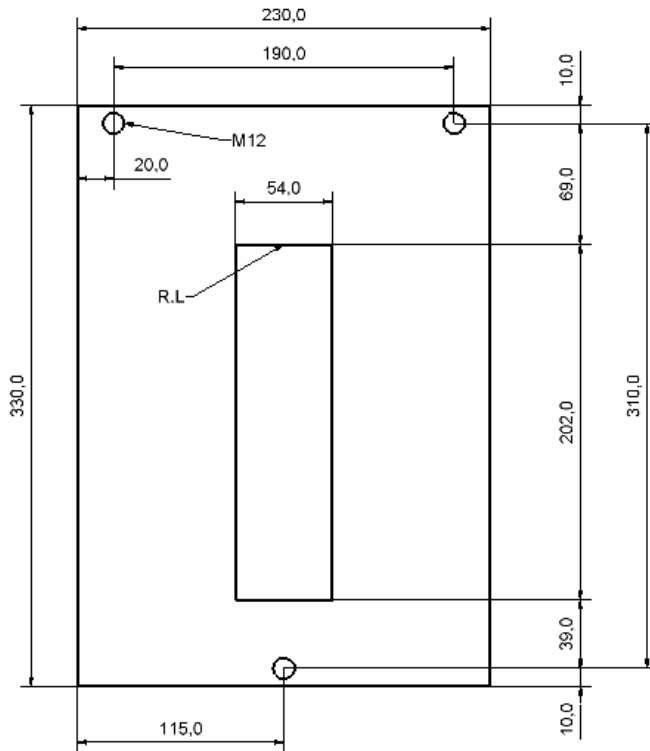
Figure 10.10 BSF 200/50, sections.

- Note a: The arrows indicate the reference levels used in the design (marked R.L. on the sections). These levels are governing the placing of the units in the forms. See Memo 15.
- Note b: The beam units are manufactured without the horizontal bar at the bottom. See Memo 16.
- Note c: This dimension can be chosen, and is usually standardized by the precaster. The minimum dimension depends upon the size of the stirrups and requirements to concrete cover. 120 mm is recommended for this distance.

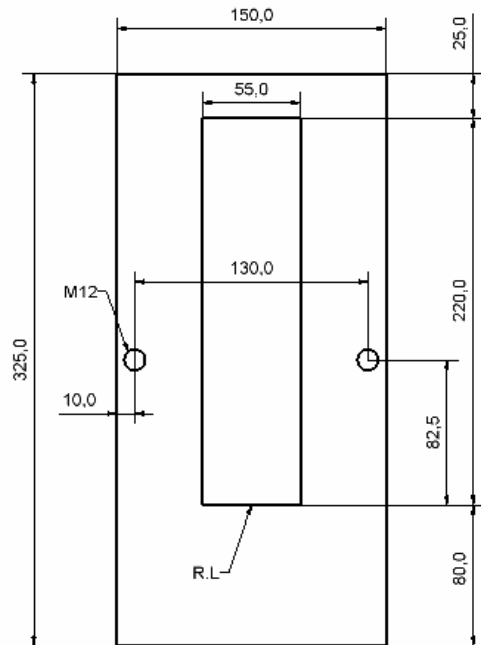
Date :	08.08.95	Sign: bot
Last rev:	03.06.09	Sign: tb
Doc. No:	K4-10/10E	Sign: tb
Page 10 of 12		

## Main dimensions for BSF units

### BSF 200/50



Standard beam front  
plate



Recommended hole picture for the  
column front plate.

Date :	08.08.95	Sign: bot
Last rev:	03.06.09	Sign: tb
Doc. No:	K4-10/10E	Sign: tb
Page 11 of 12		

## Main dimensions for BSF units

### BSF 250/50

(The dimensions shown in these figures shall not be used as reference dimensions when locating the units in the formwork)

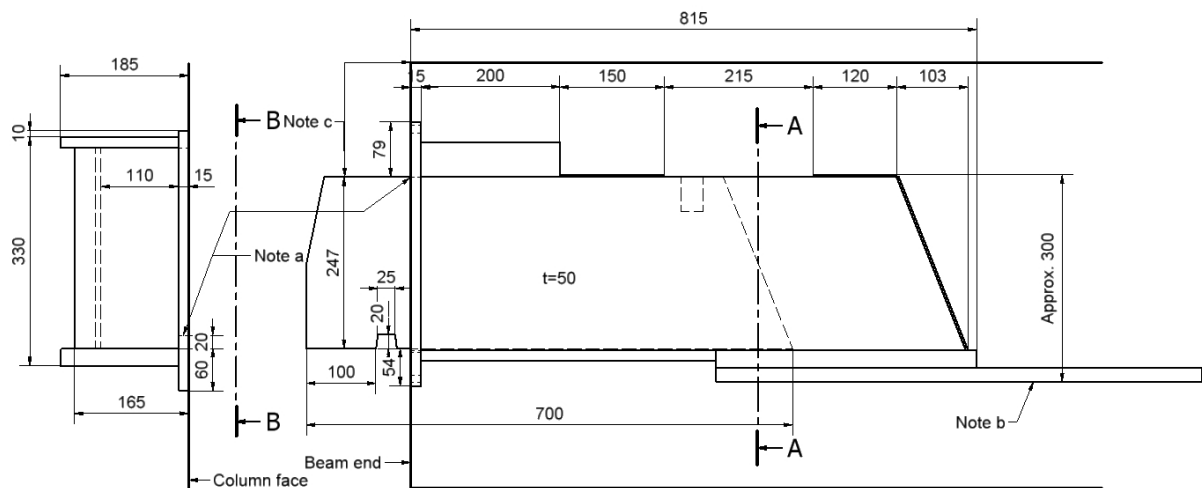
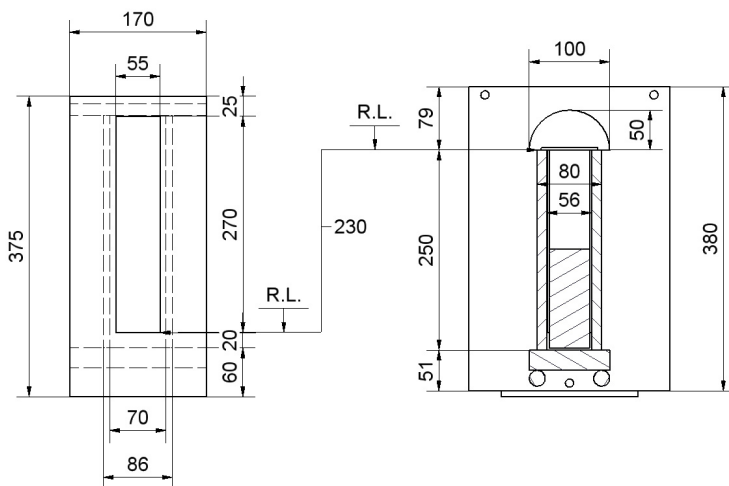


Figure 10.11. BSF 250/50, column and beam units



The dimensions given are for the use of the structural engineer. The production tolerances and provided clearances in the units are not reflected in these figures.

Dimensions for the beam and column front plate see next page.

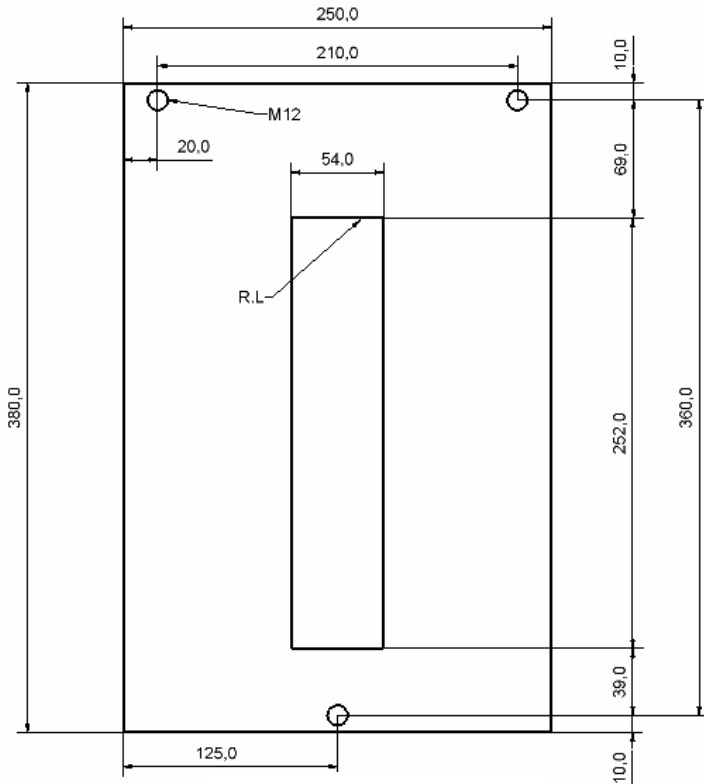
Figure 10.12. BSF 250/50, sections

- Note a: The arrows indicate the reference levels used in the design (marked R.L. on the sections). These levels are governing the placing of the units in the forms. See Memo 15.
- Note b: The beam units are manufactured without the horizontal bar at the bottom. See Memo 16.
- Note c: This dimension can be chosen, and is usually standardized by the precaster. The minimum dimension depends upon the size of the stirrups and requirements to concrete cover. 140 mm is recommended for this distance.

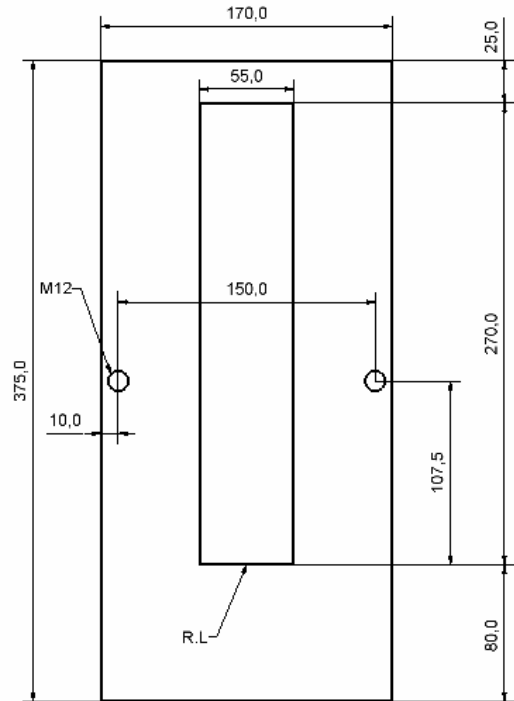
Date :	08.08.95	Sign: bot
Last rev:	03.06.09	Sign: tb
Doc. No:	K4-10/10E	Sign: tb
Page 12 of 12		

## Main dimensions for BSF units

### BSF 250/50



Standard beam front plate



Recommended hole picture for the column front plate.