

Date :	07.01.94	Sign: bot
Last rev:	18.12.09	Sign: tb
Doc. No:	K4-10/05E	Sign: tb
Page 1 of 1		

Tolerances BSF, BCC

The maximum allowable deviations on the relative placement of the BSF/ BCC beam- and column units in the elements are as follows:

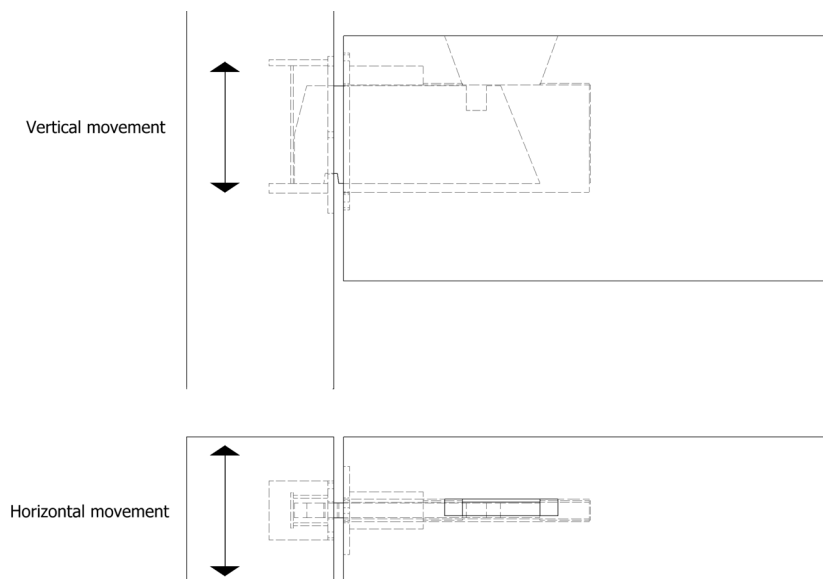
BSF:

Vertically: ± 10 mm
 Transverse horizontally: $\pm 2,5$ mm

BCC:

BCC 250	Vertical: ± 16 mm	Horizontal: ± 8 mm
BCC 450	Vertical: ± 15 mm	Horizontal: ± 11 mm
BCC 800	Vertical: ± 15 mm	Horizontal: ± 11 mm

The joint width can be from 0 to 30 mm.



Maximum allowable positive and negative deviation: (based on the free space in the column unit)

BSF	$\pm 5^\circ$	If the latch groove in the knife is enlarged, the maximum angular deviation is as shown in the brackets
BCC 250	$\pm 11^\circ$ ($\pm 18,5^\circ$)	
BCC 450 and BCC 800	$\pm 11^\circ$ ($\pm 21^\circ$)	

Short explanation:

The tolerance is the sum of maximum allowable deviation between the beam and the column units. The deviation is relative to the theoretical "exact" alignment.