

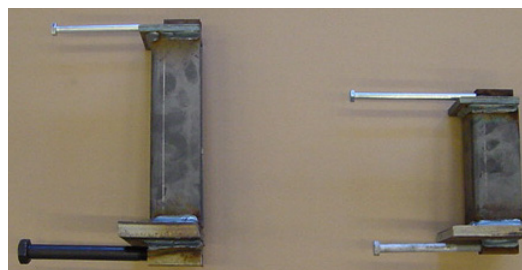
Date :	19.10.05	Sign: tb
Last rev:	12.05.09	Sign: tb
Doc. No:	K4-10/46E	Sign: tb
Page 1 of 1		

Standard reinforcement for column unit BCC

Standard reinforcement for the column unit, BCC 250, 450 and 800:



Picture shows at BCC450 column unit. Two sided unit



Picture shows a one sided BCC 450 and BCC 250 column unit with bolts. The washer is not included. For washer size see memo 27 or table below.

For Two sided connections, it is also possible to weld reinforcement bars to the column unit for the BCC instead of the threaded bar. The dimensions of the rebars will still be the same. See table below.

Column unit	One- sided *, **	Two- sided *, **
BCC 250	Top 1- M10x200 bolt with std. washer 30 Bottom 1- M16x200 bolt with std. washer 60	1- M10 threaded bar or Ø10 mm rebar 1- M16 threaded bar or Ø16 mm rebar
BCC 450	Top 1- M10x200 bolt with std. washer 30 Bottom 1- M20x200 bolt with washer 75x75x5	1- M10 threaded bar or Ø10 mm rebar 1- M20 threaded bar or Ø20 mm rebar
BCC 800	Top 1-M12x200 bolt with std. washer 40 Bottom 1-M24x300 bolt with washer 90x90x6	1- M12 threaded bar or Ø12 rebar 1- M24 threaded bar or Ø24 rebar

* Necessary washer size and bolt length are depended on the concrete grade and column depth see memo 27.

** The shown reinforcement in the table above, is the reinforcement that is necessary to anchor the unit to the column. Check also for splitting stress under the unit.(Often this is done by spreading the main stirrups in the column under the BCC column unit.) See section 3.4 in memo 39a-f.