

**EISEKO**  
Software for building

&

**DMA**  
PROGETTI  
structural engineering

presentano il



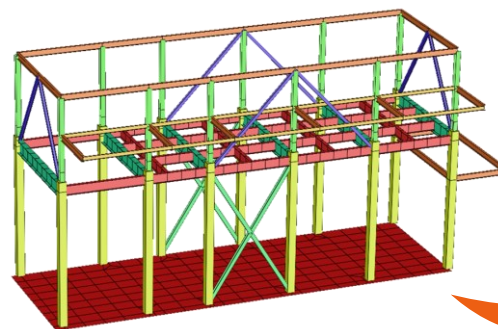
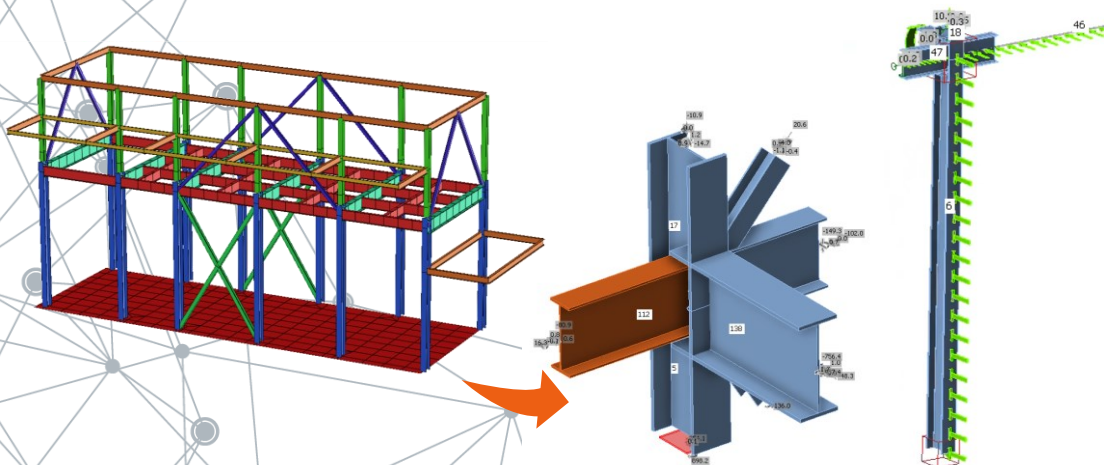
# BIM link Strand7

*IDEA Steel*

*IDEA Concrete*

 *Connection*  *Member*

 *Member*



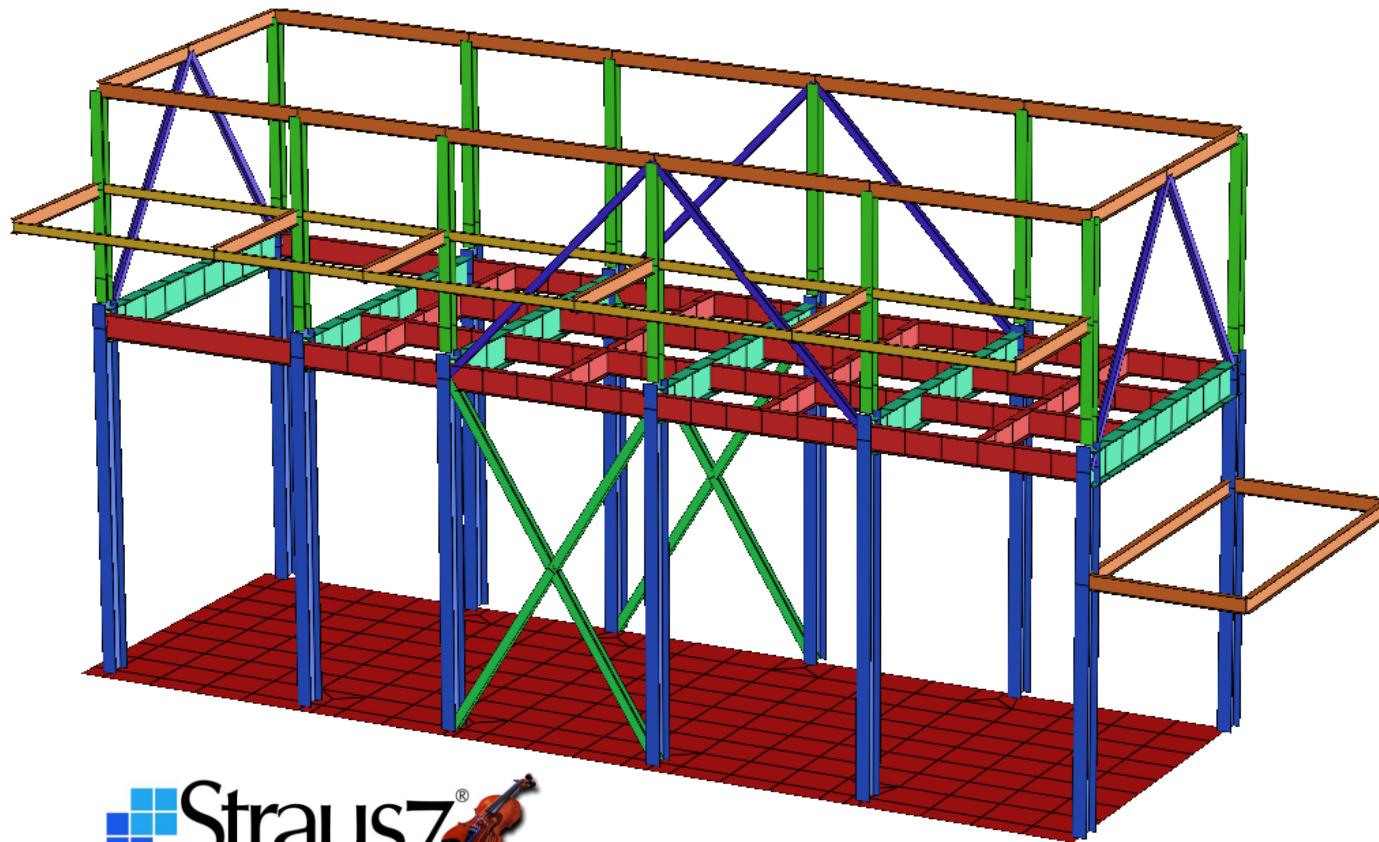
Collega il tuo software Straus7 e ottimizza il workflow

 **Straus7**  
FINITE ELEMENT ANALYSIS



**IDEA** *StatiCa*

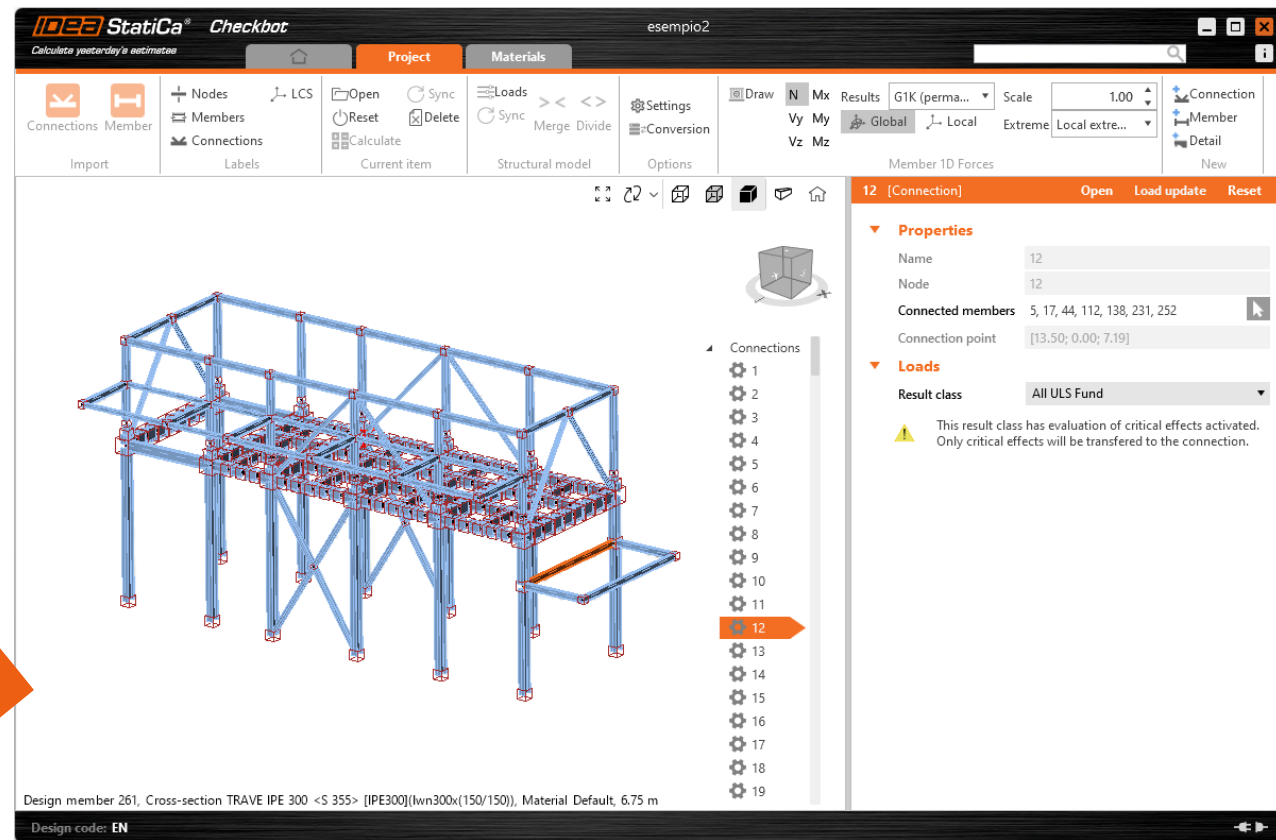
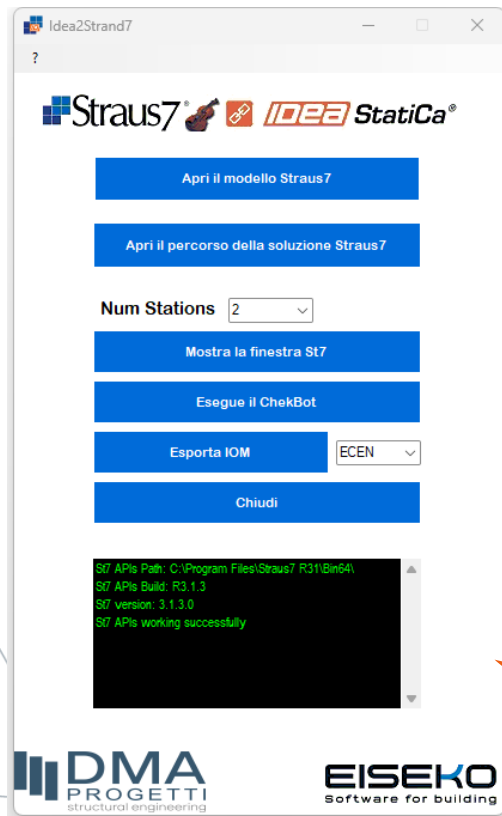
# Struttura in Acciaio



**Progetta la struttura in Acciaio in Straus7**

**BIM Link Straus7- IDEA StatiCa**

# Struttura in Acciaio



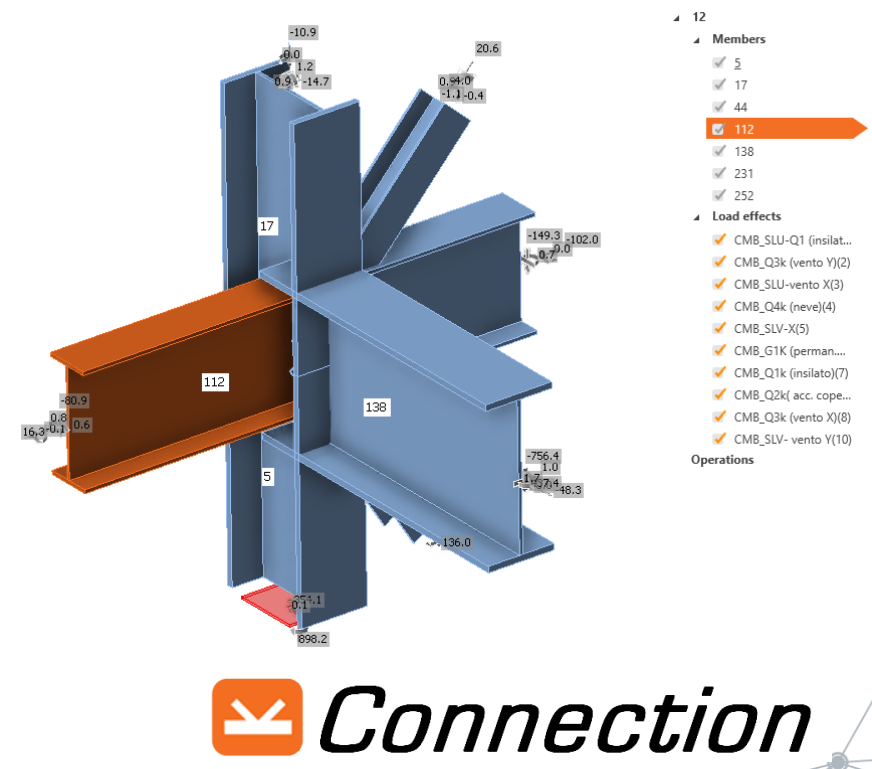
Con il BIM Link Straus7 esporta la struttura in *IDEA Checkbot*

BIM Link Straus7- IDEA StatiCa

# Struttura in Acciaio



 **Member**

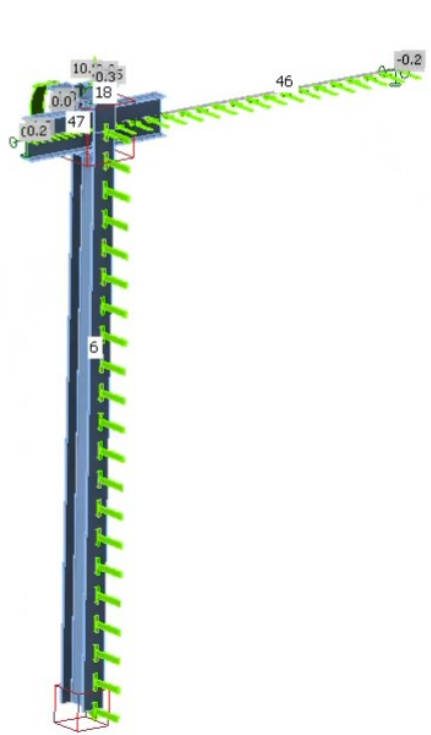


 **Connection**

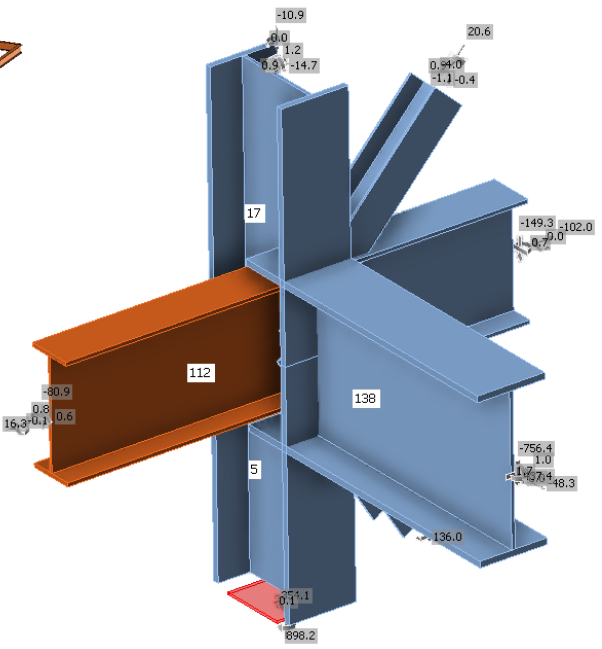
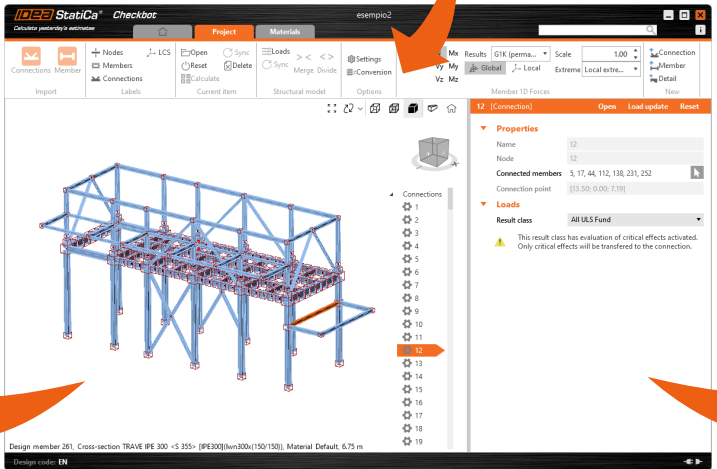
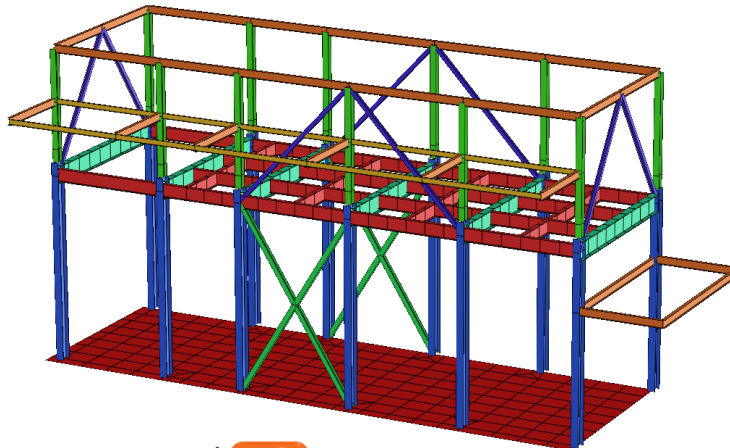
analizza tutte le combinazioni di carico in *Member* e *Connection*

BIM Link Straus7- IDEA StatiCa

# Struttura in Acciaio



- 4 Analyzed members
  - 6
- 4 Related members
  - 18
  - 46
  - 47
  - 201
- 4 Load
  - 4 ULS
    - CMB\_SLU-Q1 (insilato)
    - CMB\_Q3k (vento Y)
    - CMB\_Q1k (insilato)
    - CMB\_SLV-vento Y
    - CMB\_Q4k (neve)
    - CMB\_Q2k (acc. copertura)
    - CMB\_SLU-vento X
    - CMB\_Q3k (vento X)
- 4 Connections
  - 6
  - 13
- Operations



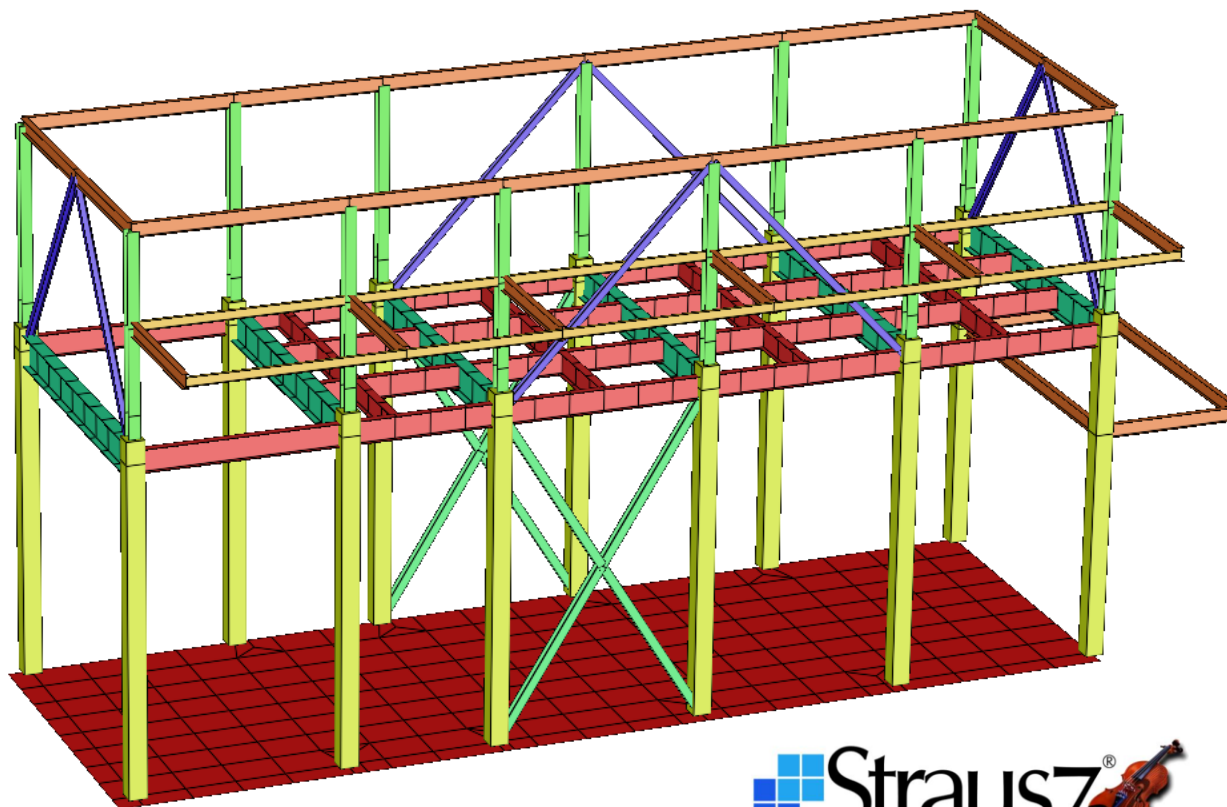
- 4 12
- 4 Members
  - 5
  - 17
  - 44
  - 112
  - 138
  - 231
  - 252
- 4 Load effects
  - CMB\_SLU-Q1 (insilat...
  - CMB\_Q3k (vento Y)(2)
  - CMB\_SLU-vento X(3)
  - CMB\_Q4k (neve)(4)
  - CMB\_SLV-X(5)
  - CMB\_G1K (perman...
  - CMB\_Q1k (insilato)(7)
  - CMB\_Q2k (acc. cope...
  - CMB\_Q3k (vento X)(8)
  - CMB\_SLV-vento Y(10)
- Operations

 **Member**

 **Connection**

BIM Link Straus7- IDEA StatiCa

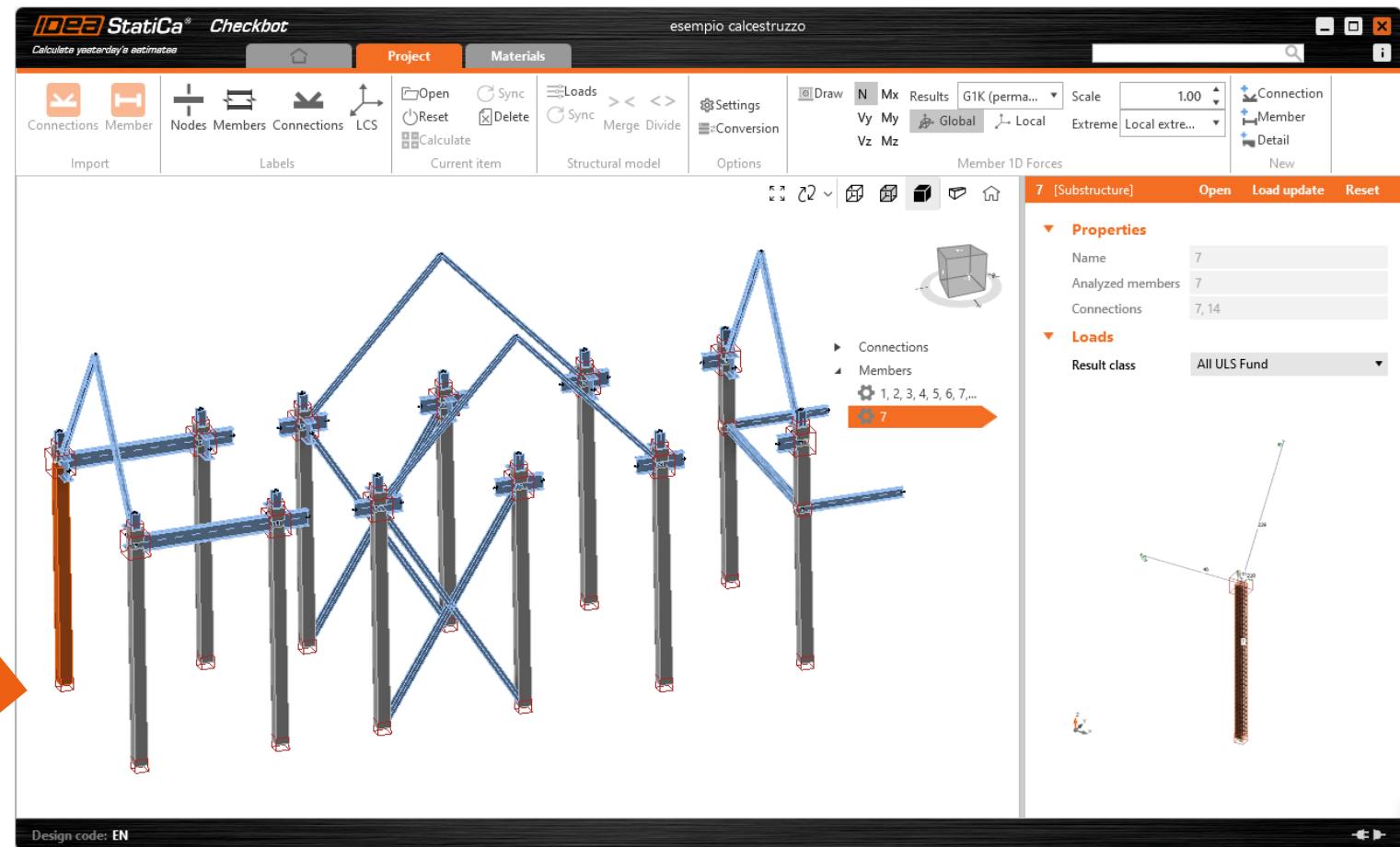
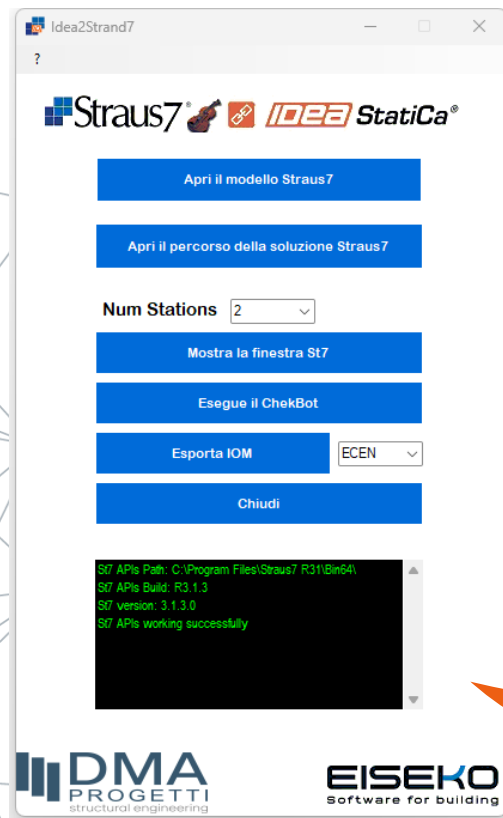
# Struttura in C.A.



Progetta la struttura in C.A. in Straus7

BIM Link Straus7-IDEA StatiCa

# Struttura in C.A.

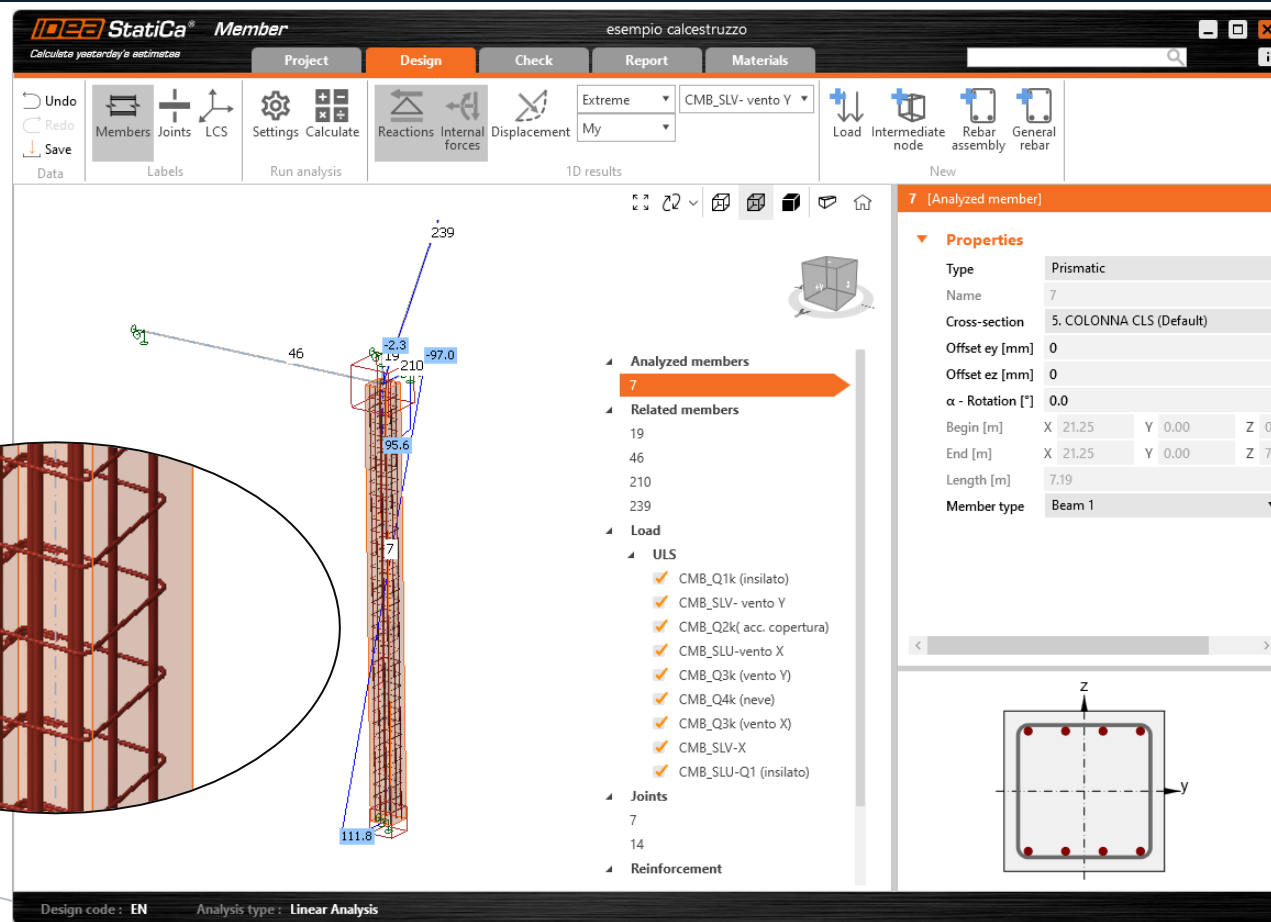


Con il BIM Link Straus7 esporta la struttura in *IDEA Checkbot*

BIM Link Straus7- IDEA StatiCa

# Struttura in C.A.

 **Member**



The screenshot displays the IDEA StatiCa Member software interface. The main window shows a 3D model of a vertical column with reinforcement bars. A circular inset provides a detailed view of the reinforcement layout. The software interface includes a menu bar (Project, Design, Check, Report, Materials), a toolbar with various analysis and design tools, and a central workspace. On the right side, there is a 'Properties' panel for the selected member, showing details such as Type (Prismatic), Name (7), Cross-section (5. COLONNA CLS (Default)), and various offsets. Below the properties, there is a list of analyzed and related members, a load list (including ULS and various wind and snow loads), and joint information. A small diagram at the bottom right shows the cross-section of the column with reinforcement bars.

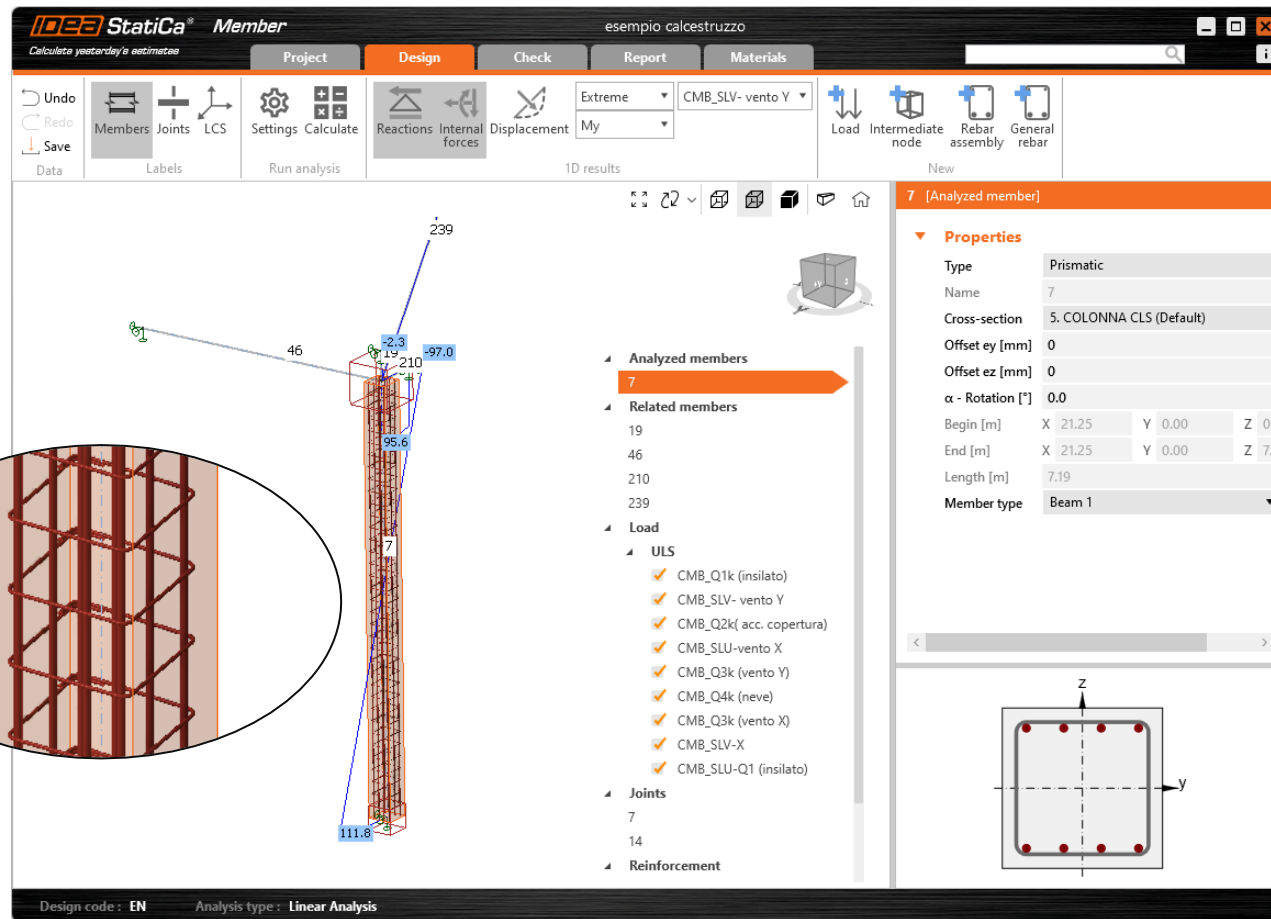
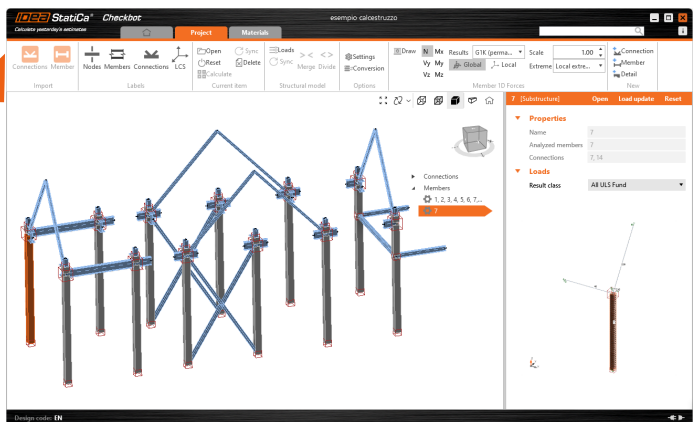
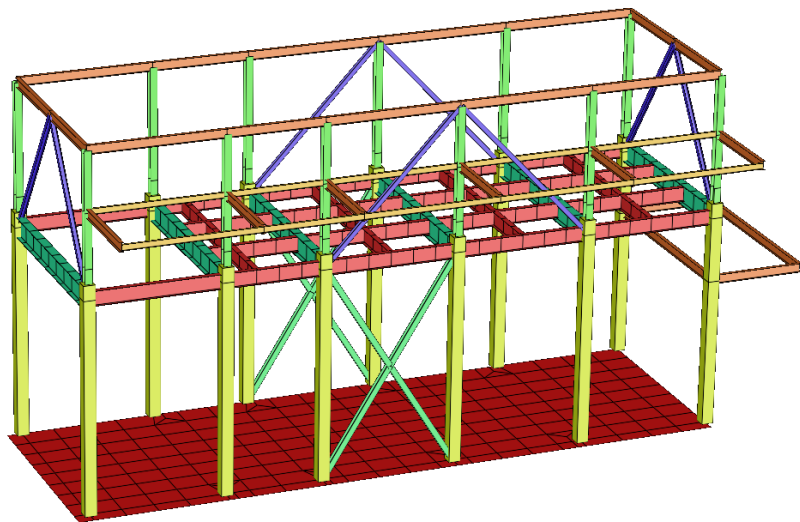
Design code: EN Analysis type: Linear Analysis

analizza tutte le combinazioni di carico in *Member*

BIM Link Straus7- IDEA StatiCa



# Struttura in C.A.



 **Member**

BIM Link Straus7- IDEA StatiCa

**CONTATTACI PER MAGGIORI INFO**

**EISEKO**  
Software for building

**IDEA StatiCa**<sup>®</sup>  
*Authorised Reseller*

**EISEKO COMPUTERS**

[www.eiseko.it](http://www.eiseko.it)

[idea@eiseko.it](mailto:idea@eiseko.it)

**BIM Link Straus7- IDEA StatiCa**